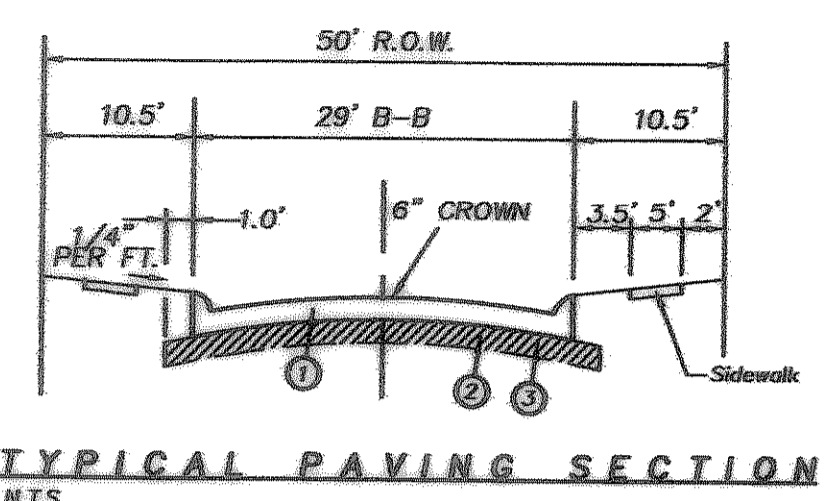
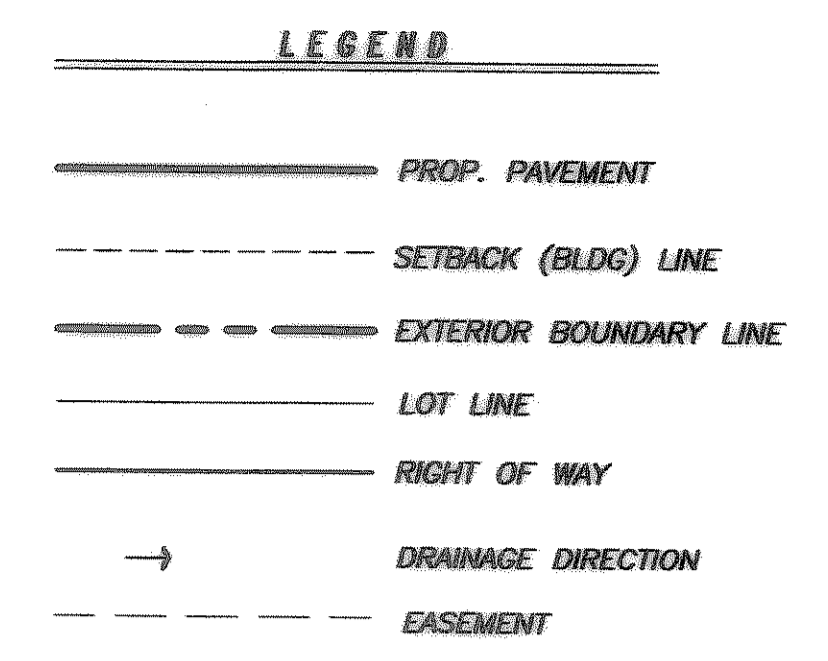
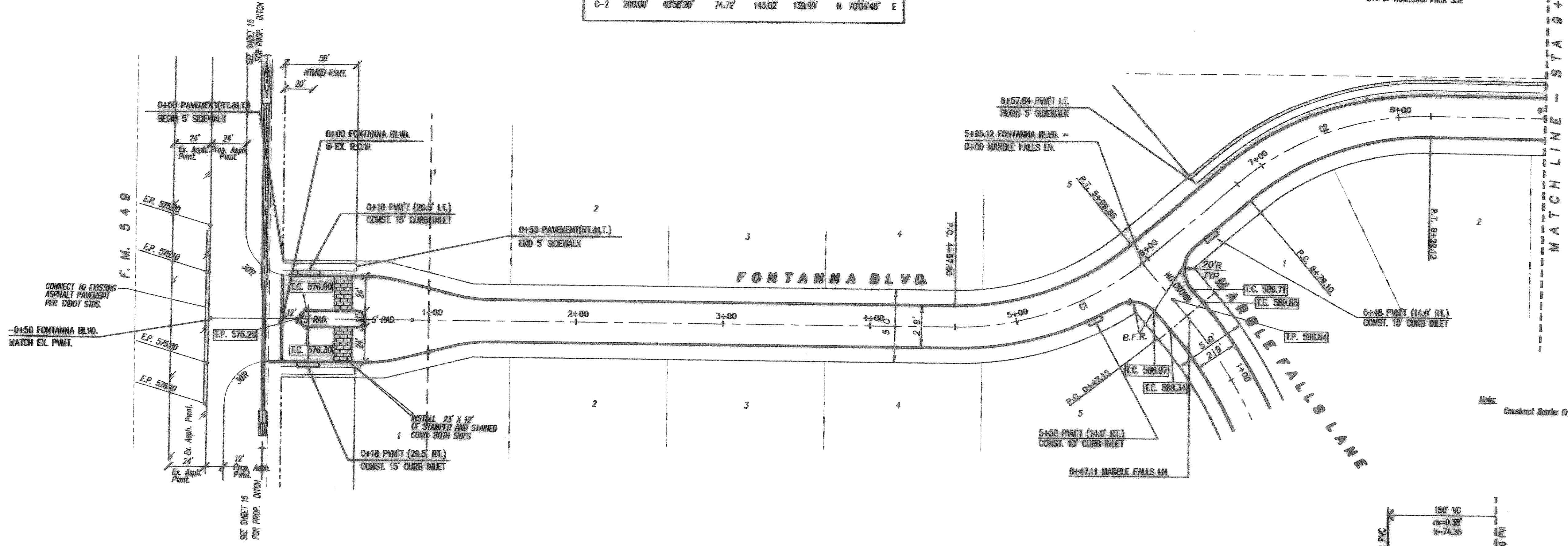


**C.L. CURVE TABLE**

CURVE	RADIUS	DELTA	TANGENT LENGTH	CHORD	BEARING
C-1	200.00'	40°41'37"	74.17'	142.04'	S 69°56'27" W
C-2	200.00'	40°58'20"	74.72'	143.02'	N 70°04'48" E

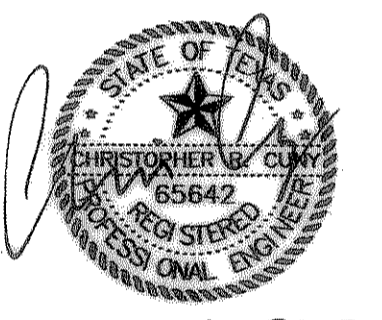


- ① 6"-3600 PSI reinforced concrete pavement. Concrete to be 6 sack pavement with integral curb, no. 3 bars, 24" O.C. both ways. Min. 6 Sack For Machine Placed. Min. 6 1/2 Sack For Hand Placed.
- ② A minimum of 6% by weight of lime to a depth of 6" shall be required.
- ③ Subgrade shall be 6" thick and compacted to a density not less than 95% at 0% - 4% of optimum.

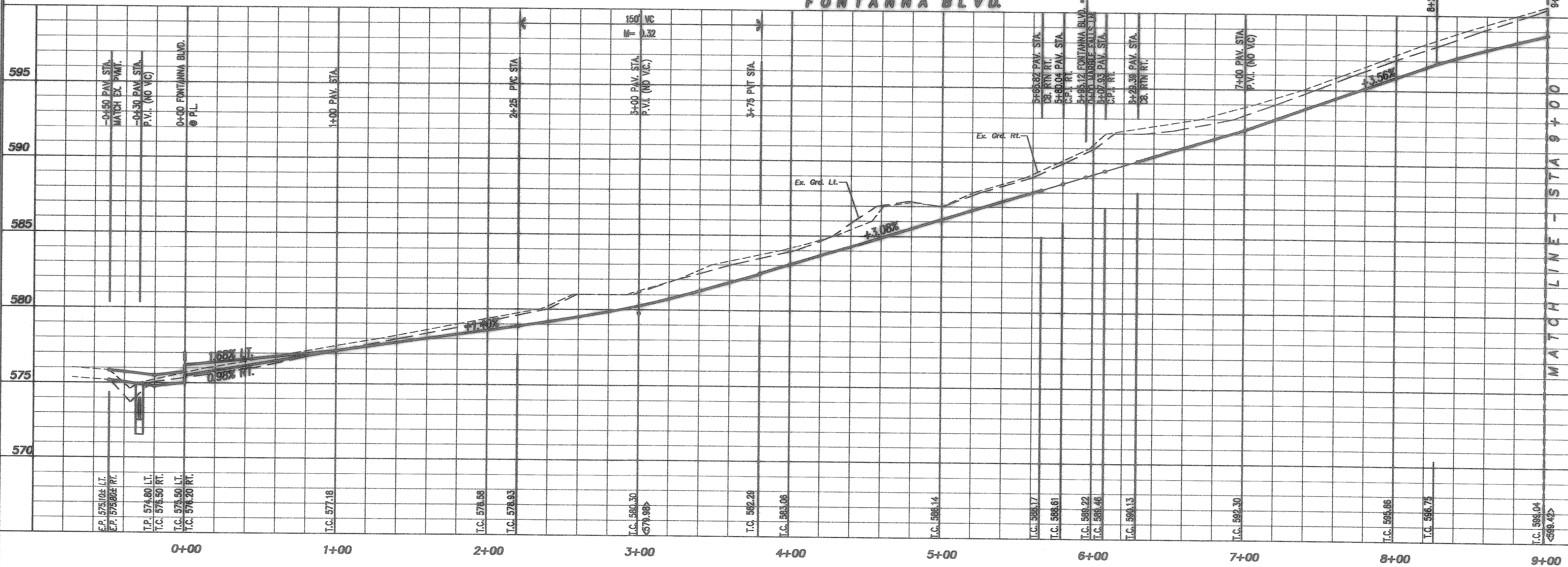


Note: Construct Barrier Free Ramp (B.F.R.) per City of Rockwall Spec.

THE SEAL APPEARING ON THIS DOCUMENT WAS AUTHORIZED BY CHRISTOPHER R. CUNY, P.E. 65642



8-22-2007



**Construction Record Drawing**  
8-22-2007

**Paving Plan and Profile - Fontanna Blvd.**

**Fontanna Ranch**  
City of Rockwall, Rockwall County, Texas

*Spring Haven Investments, Inc.*  
6750 Hillcrest Plaza Dr. • Suite 305 • Dallas, Texas 75230 • 972.396.3333

**F.C. CUNY CORPORATION**  
#2 Horizon Court • Heath, Texas 75032 • 469-402-7700

Drawn By: MSC	Checked By: DJW	Date: 10/18/05	Scale: H: 1"=40' V: 1"=4'	Project No.: 05-013	Sheet No.: 8 of 45
---------------	-----------------	----------------	------------------------------	---------------------	--------------------