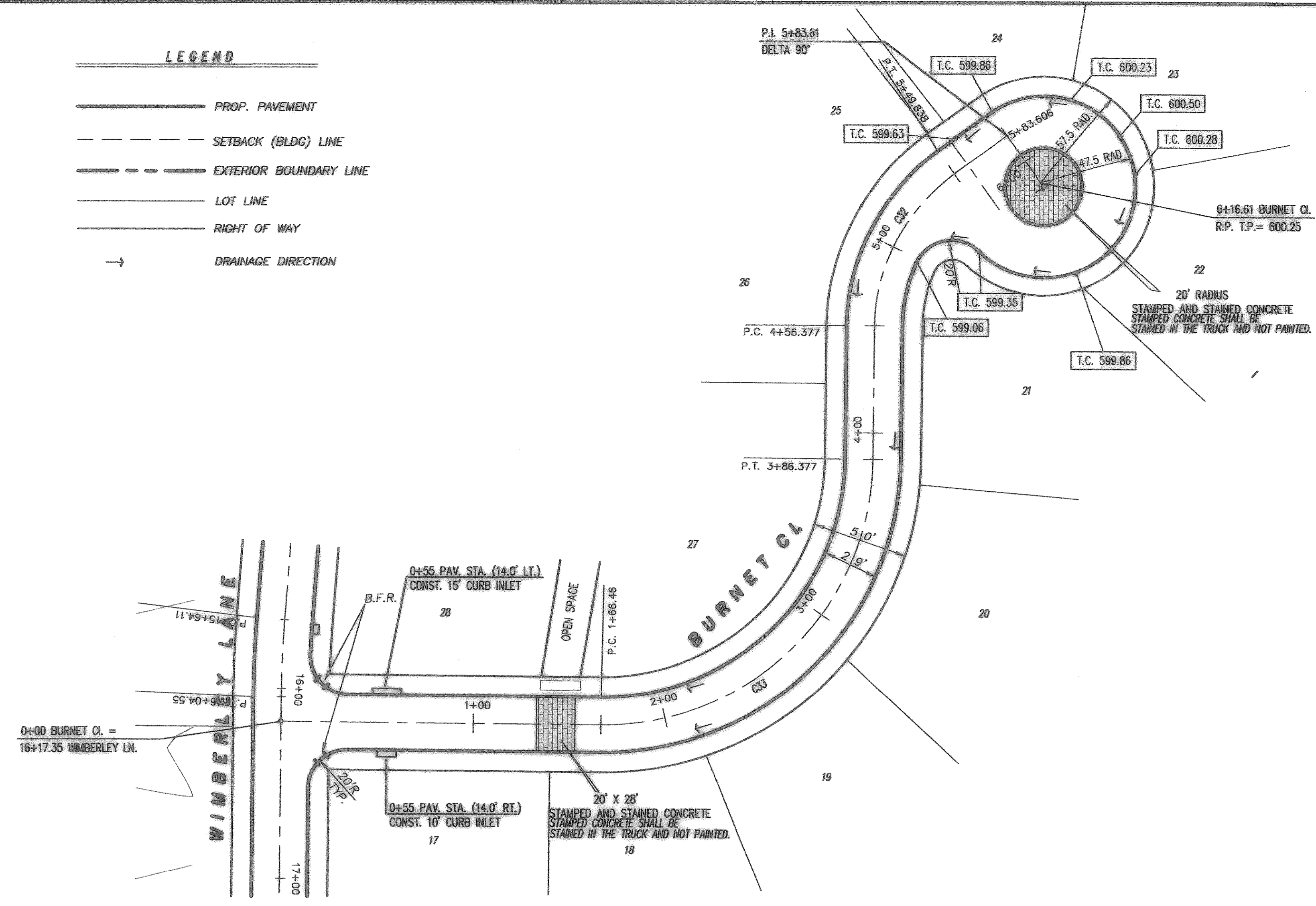


**LEGEND**

- PROP. PAVEMENT
- - - SETBACK (BLDG) LINE
- - - EXTERIOR BOUNDARY LINE
- LOT LINE
- RIGHT OF WAY
- DRAINAGE DIRECTION



**C.L. CURVE TABLE**

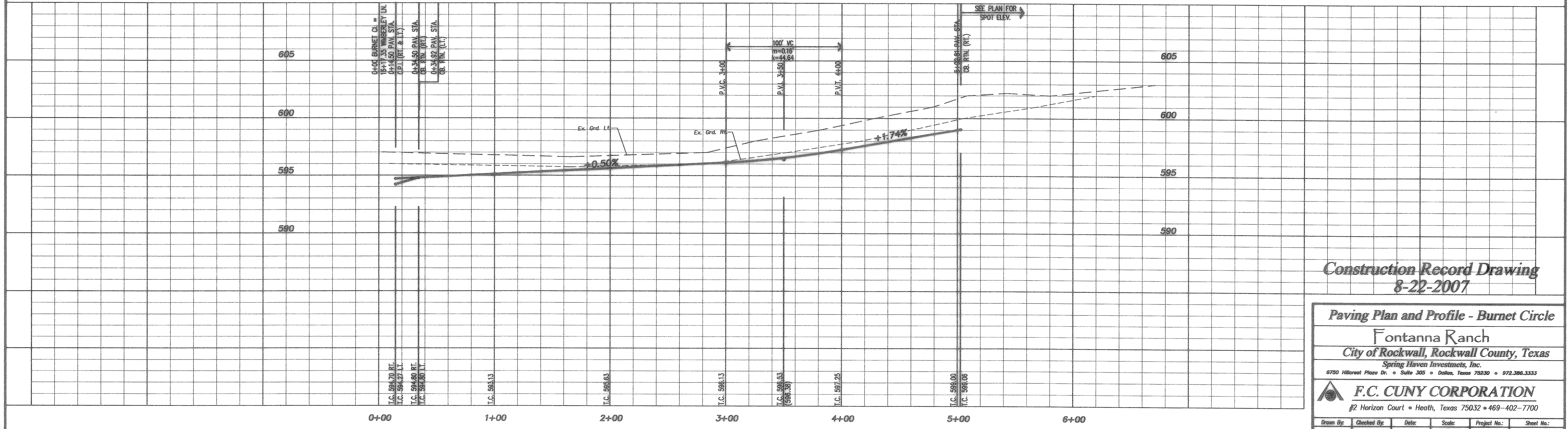
CURVE	RADIUS	DELTA	TANGENT	LENGTH	CHORD	BEARING
C-1	200.00'	40°41'37"	74.17'	142.04'	139.08'	S 69°56'27" W
C-2	200.00'	40°58'20"	74.72'	143.02'	139.89'	N 70°04'48" E
C-3	275.00'	25°04'25"	61.15'	120.34'	119.38'	S 76°53'49" E
C-4	275.00'	15°36'39"	37.69'	74.92'	74.69'	S 53°47'41" E
C-5	425.00'	08°42'42"	32.37'	64.61'	64.55'	N 53°55'22" W
C-6	391.77'	10°04'08"	34.51'	68.85'	68.76'	N 53°41'47" W
C-7	375.00'	10°37'43"	34.88'	69.56'	69.46'	S 52°07'51" E
C-8	375.00'	10°37'43"	34.88'	69.56'	69.46'	S 42°20'09" E
C-9	425.00'	14°51'03"	54.13'	107.68'	107.40'	N 44°16'49" W
C-10	450.00'	28°00'39"	112.24'	219.99'	217.81'	N 28°20'40" E
C-11	100.00'	78°28'49"	81.67'	136.97'	126.51'	N 81°35'25" E
C-12	200.00'	30°14'48"	54.85'	106.56'	104.36'	N 74°17'35" W
C-13	80.00'	89°00'00"	80.00'	129.86'	113.14'	S 44°25'00" E
C-14	855.00'	03°49'18"	21.85'	43.69'	43.68'	N 88°56'21" E
C-15	645.00'	11°28'28"	64.60'	128.17'	128.96'	N 87°34'04" W
C-16	800.00'	11°28'47"	80.41'	160.28'	160.02'	S 87°34'13" E
C-17	500.00'	13°50'17"	60.67'	120.76'	120.47'	N 87°25'12" E
C-18	650.00'	03°51'41"	20.23'	40.44'	40.43'	N 87°33'09" W
C-19	600.00'	07°36'34"	39.90'	79.69'	79.63'	S 89°25'36" E
C-20	600.00'	03°44'53"	19.63'	39.25'	39.24'	S 88°38'33" W
C-21	375.00'	12°43'02"	41.79'	83.23'	83.06'	N 83°07'29" W
C-22	425.00'	27°24'43"	103.65'	203.33'	201.40'	N 89°31'41" E
C-23	375.00'	14°44'41"	22.57'	44.88'	44.76'	S 83°10'09" W
C-24	200.00'	31°02'11"	55.53'	108.14'	107.02'	N 73°57'55" W
C-25	200.00'	30°31'35"	54.58'	106.56'	105.30'	S 73°42'37" E
C-26	200.00'	23°00'43"	40.71'	80.33'	79.79'	N 11°30'21" E
C-27	220.00'	40°08'20"	80.38'	154.12'	150.99'	S 22°34'44" E
C-28	200.00'	43°13'54"	79.25'	150.90'	147.35'	N 21°01'57" W
C-29	300.00'	40°58'22"	112.13'	214.62'	210.07'	S 19°54'41" E
C-30	175.00'	18°11'42"	29.82'	58.57'	58.34'	N 51°26'51" E
C-31	225.00'	18°11'42"	36.03'	71.45'	71.15'	S 51°26'51" W
C-32	100.00'	53°32'57"	50.46'	93.46'	90.10'	N 62°42'32" E
C-33	140.00'	90°00'00"	140.00'	219.91'	197.99'	S 44°29'00" E

THE SEAL APPEARING ON THIS DOCUMENT WAS AUTHORIZED BY CHRISTOPHER R. CUNY, P.E. 65642



8-22-2007

**BURNET CIRCLE**



**Construction Record Drawing**  
8-22-2007

**Paving Plan and Profile - Burnet Circle**  
**Fontanna Ranch**  
 City of Rockwall, Rockwall County, Texas  
 Spring Haven Investments, Inc.  
 6750 Hillcrest Plaza Dr. • Suite 205 • Dallas, Texas 75230 • 972.386.3333  
**F.C. CUNY CORPORATION**  
 #2 Horizon Court • Heath, Texas 75032 • 469-402-7700  
 Drawn By: MNC    Checked By: DWH    Date: 10/18/06    Scale: 1/4"=1'-0"    Project No.: 05-013    Sheet No.: 14 of 45