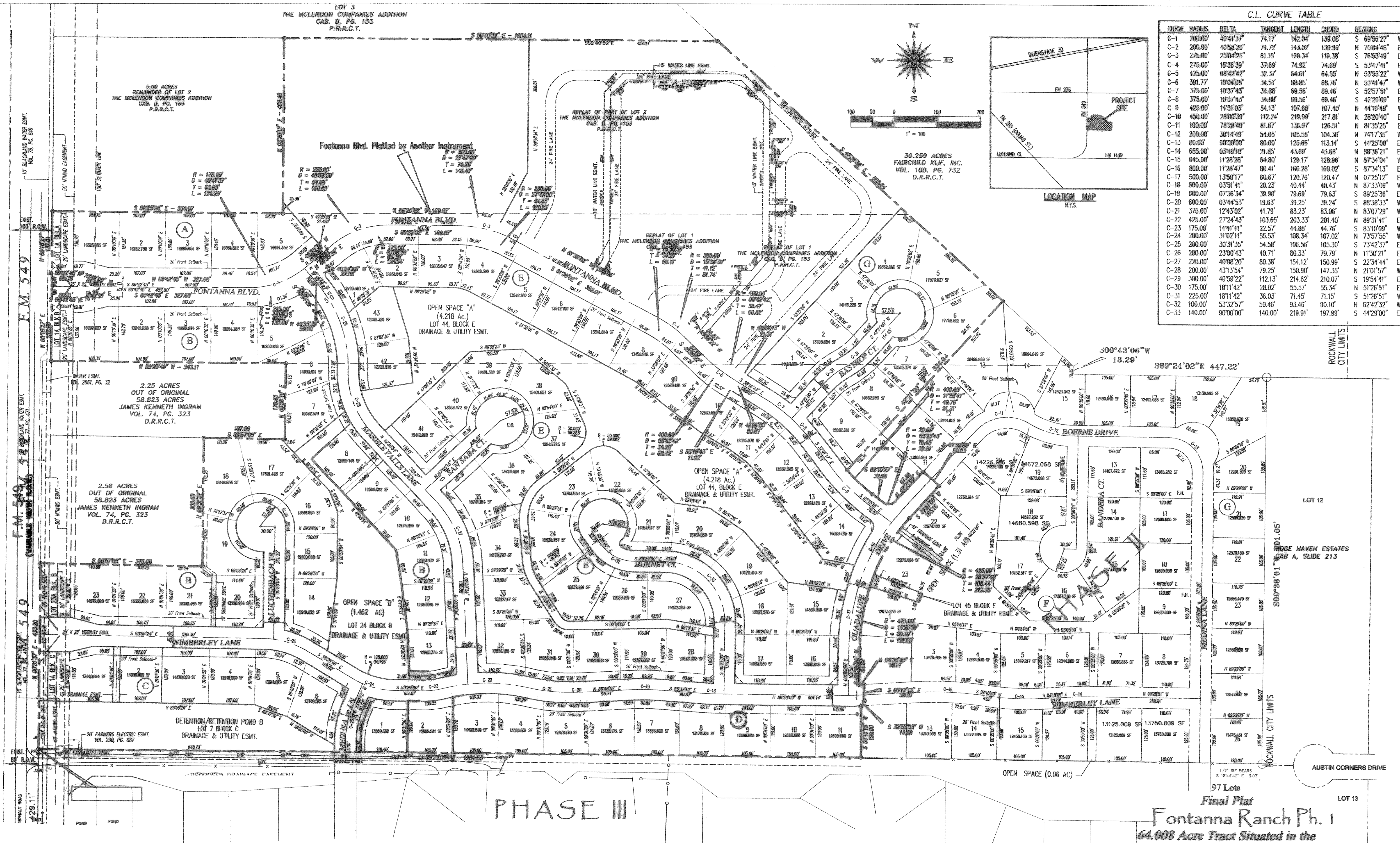
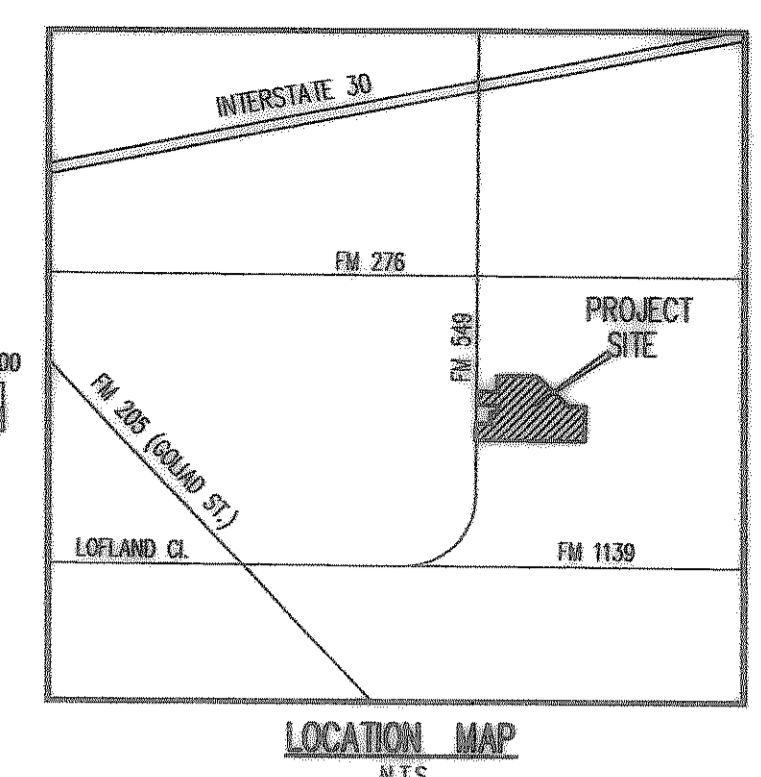
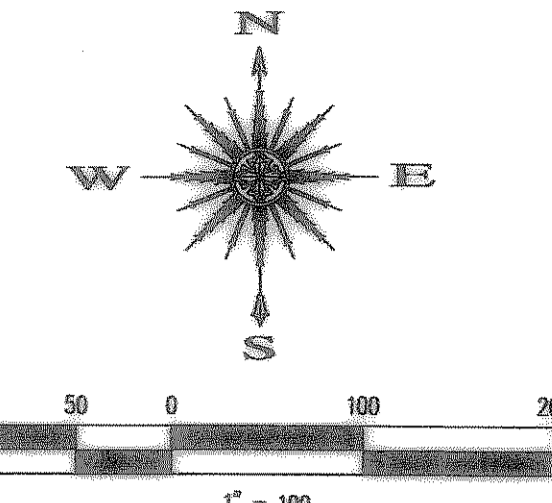


LOT 3
THE MCLendon COMPANIES ADDITION
CAB. D, PG. 153
P.R.R.C.T.

C.L. CURVE TABLE

CURVE	RADIUS	DELTA	TANGENT	LENGTH	CHORD	BEARING
C-1	200.00	40°41'37"	74.17	142.04	139.08	S 69°56'27" W
C-2	200.00	40°58'20"	74.72	143.02	139.99	N 70°04'48" E
C-3	275.00	25°04'25"	61.15	120.34	119.38	E
C-4	275.00	15°36'39"	37.69	74.92	74.69	S 53°41'41" W
C-5	425.00	08°42'42"	32.37	64.61	64.55	S 53°55'22" W
C-6	391.77	10°04'08"	34.51	68.85	68.76	N 53°41'47" E
C-7	375.00	10°37'43"	34.88	69.56	69.46	S 52°57'51" W
C-8	375.00	10°37'43"	34.88	69.56	69.46	S 42°20'09" W
C-9	425.00	14°31'03"	54.13	107.68	107.40	N 44°16'49" W
C-10	450.00	28°00'39"	112.24	219.99	217.81	N 28°20'40" W
C-11	100.00	78°28'49"	81.67	136.97	126.51	N 81°35'25" E
C-12	200.00	30°14'49"	54.05	105.58	104.36	N 74°17'35" W
C-13	80.00	90°00'00"	80.00	125.66	113.14	S 44°25'00" E
C-14	655.00	03°49'18"	21.85	43.69	43.68	N 88°36'21" E
C-15	645.00	11°28'28"	64.80	129.17	128.96	N 87°34'04" E
C-16	800.00	11°28'47"	80.41	160.28	160.02	S 87°34'13" E
C-17	500.00	13°50'17"	60.67	120.76	120.47	N 87°25'12" E
C-18	600.00	03°51'41"	20.23	40.44	40.43	N 87°33'09" W
C-19	600.00	07°36'34"	39.90	79.89	79.63	S 89°25'36" E
C-20	600.00	03°44'53"	19.63	39.25	39.24	S 88°38'33" W
C-21	375.00	12°43'02"	41.79	83.23	83.06	N 83°07'29" W
C-22	425.00	27°24'43"	103.65	203.33	201.40	N 89°31'41" W
C-23	175.00	14°41'41"	22.57	44.88	44.76	S 83°10'09" W
C-24	200.00	31°02'11"	55.53	108.34	107.02	N 73°57'55" W
C-25	200.00	30°31'35"	54.58	106.56	105.30	S 73°42'37" E
C-26	200.00	23°00'43"	40.71	80.33	79.79	N 11°30'21" W
C-27	220.00	40°08'20"	80.38	154.12	150.99	S 22°34'44" W
C-28	200.00	43°13'54"	79.25	150.90	147.35	N 21°01'57" W
C-29	300.00	40°58'22"	112.13	214.62	210.07	S 19°54'41" E
C-30	175.00	18°11'42"	28.02	55.57	55.34	N 51°26'51" W
C-31	225.00	18°11'42"	36.03	71.45	71.15	N 51°26'51" W
C-32	100.00	53°32'57"	50.46	90.10	82.42	N 62°42'32" E
C-33	140.00	90°00'00"	140.00	219.91	197.99	S 44°29'00" E



- Notes:
1. ALL 5/8" IRS HAVE A CAP STAMPED R.P.L.S. 5430.
 2. 20' X 20' VISIBILITY CLIPS ON ALL STREET INTERSECTIONS
 3. ALL OPEN SPACES, DRAINAGE EASEMENTS, AND UTILITY EASEMENTS SHALL BE MAINTAINED BY THE HOME OWNER'S ASSOCIATION.

OPEN SPACE TABULATION

PARK SITE	5.42
OPEN SPACE A	4.22
OPEN SPACE B	1.46
OPEN SPACE C	1.51
NTMWD & LANDSCAPE ESMT.	0.58
TOTAL	13.17

Final Plat
Fontanna Ranch Ph. I
64.008 Acre Tract Situated in the
City of Rockwall, Rockwall County, Texas
Including A Replat Lot 1 & Pt. 2 of
The McLendon Companies Addition

Developed By:
Spring Haven Investments, Inc.
6750 Hillcrest Plaza Dr. • Suite 305 • Dallas, Texas 75230 • 972.386.3333
Engineer:

Surveyor:
Maddox Surveying & Mapping, Inc.
P.O. Box 2109
Forsyth, Texas 75126
(972) 564-4416

F.C. Cury Corporation
#2 Horizon Court • Heath, Texas 75032 • 469-402-7700
October, 2006 Scale: 1"=100'