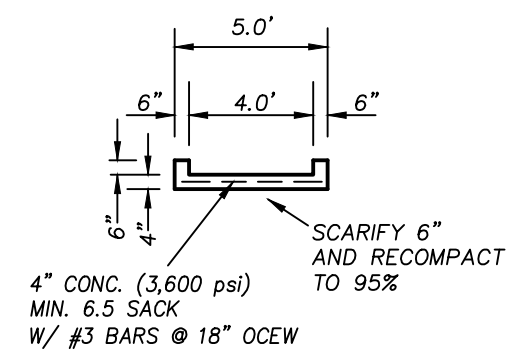
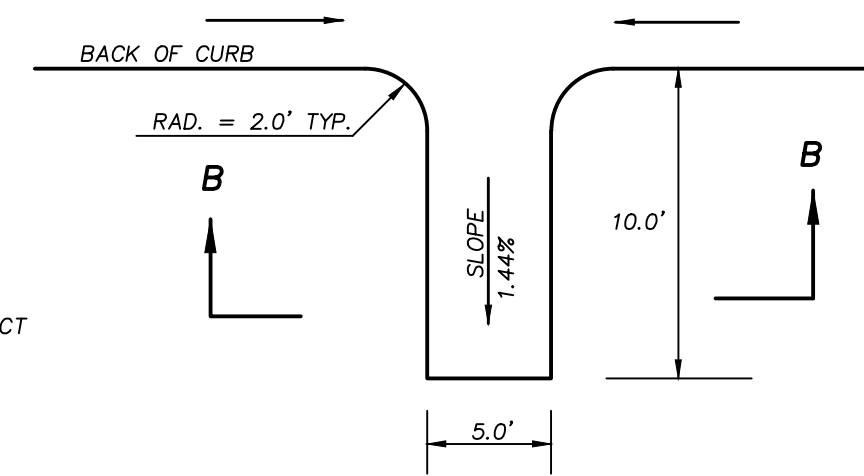


BRICK PAVER PAVING SECTION D2 - D2
N.T.S.

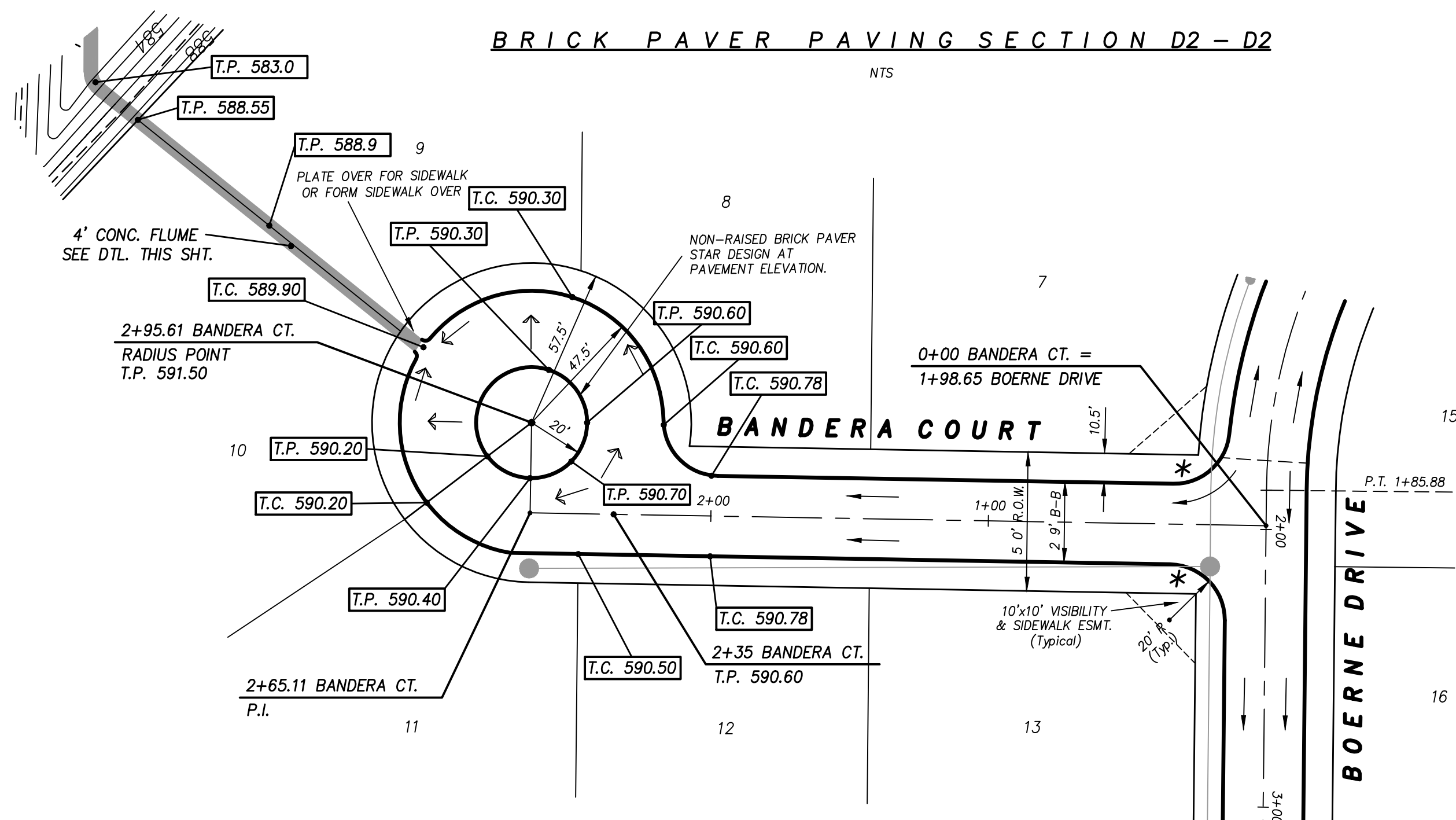


SECTION B-B
N.T.S.

FLUME HYDRAULICS
 $Q_{100} = 7.84$ cfs
 $Q_{cap} = 10.00$ cfs
 $V_{100} = 4.55$ ft/sec
 $W_p = 4.86$ ft
 $A_f = 1.72$ ft²
 $d_{100} = 0.43$
 SLOPE = 0.65%
 $n = 0.013$



PLAN CONC. FLUME
N.T.S.



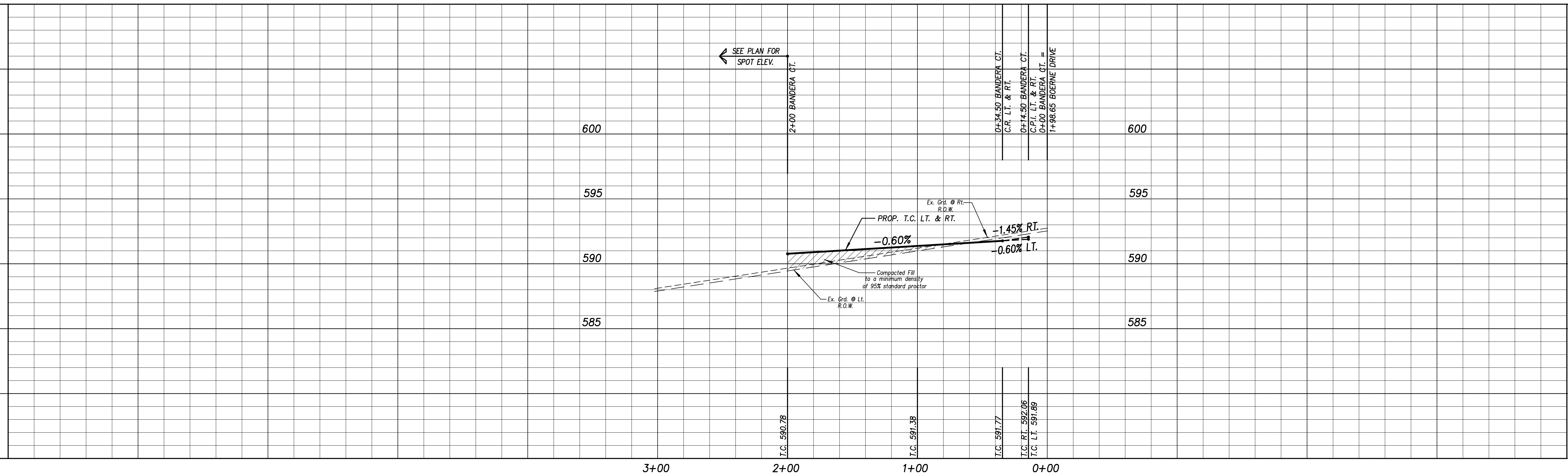
BANDERA COURT

* Construct Barrier Free Ramp (B.F.R.) per City of Rockwall Stds.

CAUTION EXISTING UTILITIES !!!

EXISTING UTILITIES AND UNDERGROUND FACILITIES INDICATED ON THESE PLANS HAVE BEEN LOCATED FROM REFERENCE INFORMATION. IT SHALL BE THE RESPONSIBILITY OF THE CONTRACTOR TO VERIFY BOTH HORIZONTALLY AND VERTICALLY THE LOCATION OF ALL EXISTING UTILITIES AND UNDERGROUND FACILITIES PRIOR TO CONSTRUCTION, TO TAKE THE NECESSARY PRECAUTIONS IN ORDER TO PROTECT ALL FACILITIES ENCOUNTERED. THE CONTRACTOR SHALL PRESERVE AND PROTECT ALL EXISTING UTILITIES FROM DAMAGE DURING CONSTRUCTION.

BENCHMARK:
 *X ON TOP OF CURB WEST NOSE OF MEDIAN AT ENTRANCE TO FONTANNA RANCH WIMBERLEY LN.
 ELEV. 570.06

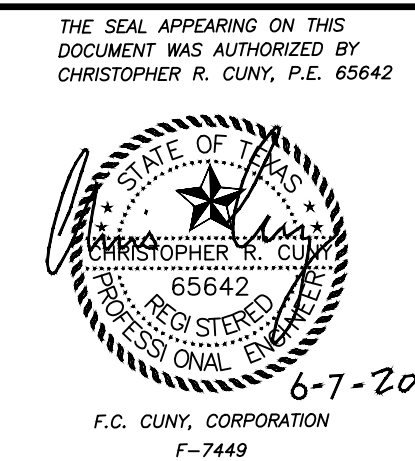


Revision	Date	Description

FONTANNA RANCH, LTD.
 6750 HILLCREST PLAZA DR., S. 235 • DALLAS, TX 75220 • 972-386-3333

Fontanna Ranch Ph. 2

F.C. CUNY CORPORATION
 #2 Horizon Court • Ste. 500 • Heath, Texas 75032
 Phone: 469-402-7700
 Fax: 469-402-0700
 Texas Registered Engineering Firm F-7449



Drawn By: FC CUNY	Checked By: FC CUNY
Date: 4-16	Project No.:
Sheet Title: Bandera Court Paving Plan & Profile	
Scale: h : 1" = 40' v : 1" = 4'	Sheet No.: 7 of 17

RECORD DRAWING

Fontanna Ranch Ph. 2