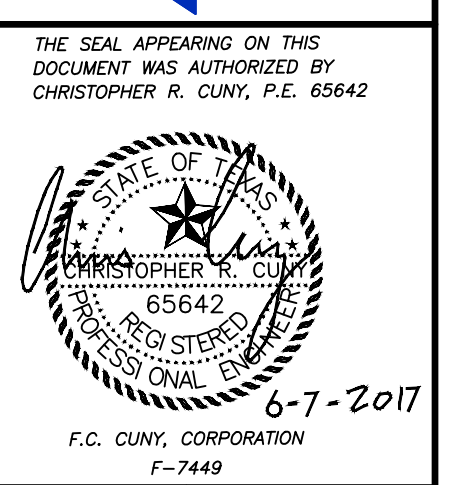


Revision	Date	Description

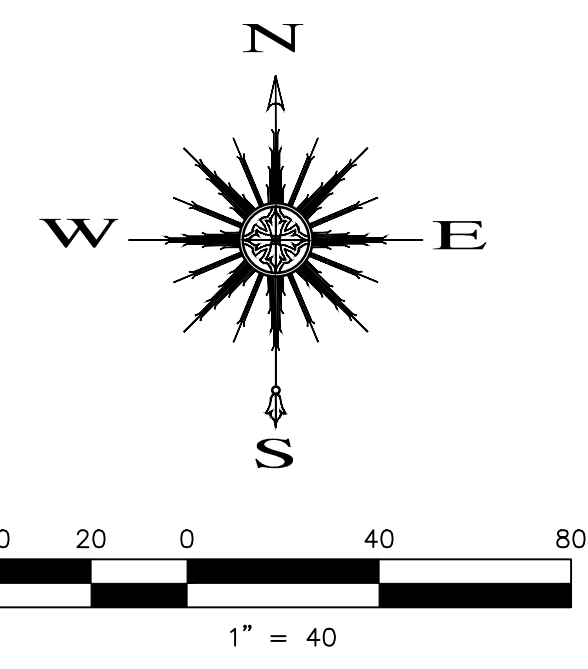
**FONTANNA RANCH, LTD.**  
 6750 HILLCREST BLAZA DR., S. 325 • DALLAS, TX 75230 • 972-386-3333

**Fontanna Ranch Ph. 2**

**F.C. CUNY CORPORATION**  
 #2 Horizon Court • Ste. 300 • Heath, Texas 75032  
 Phone: 469-402-7700  
 Fax: 469-402-0700  
 Texas Registered Engineering Firm F-7449

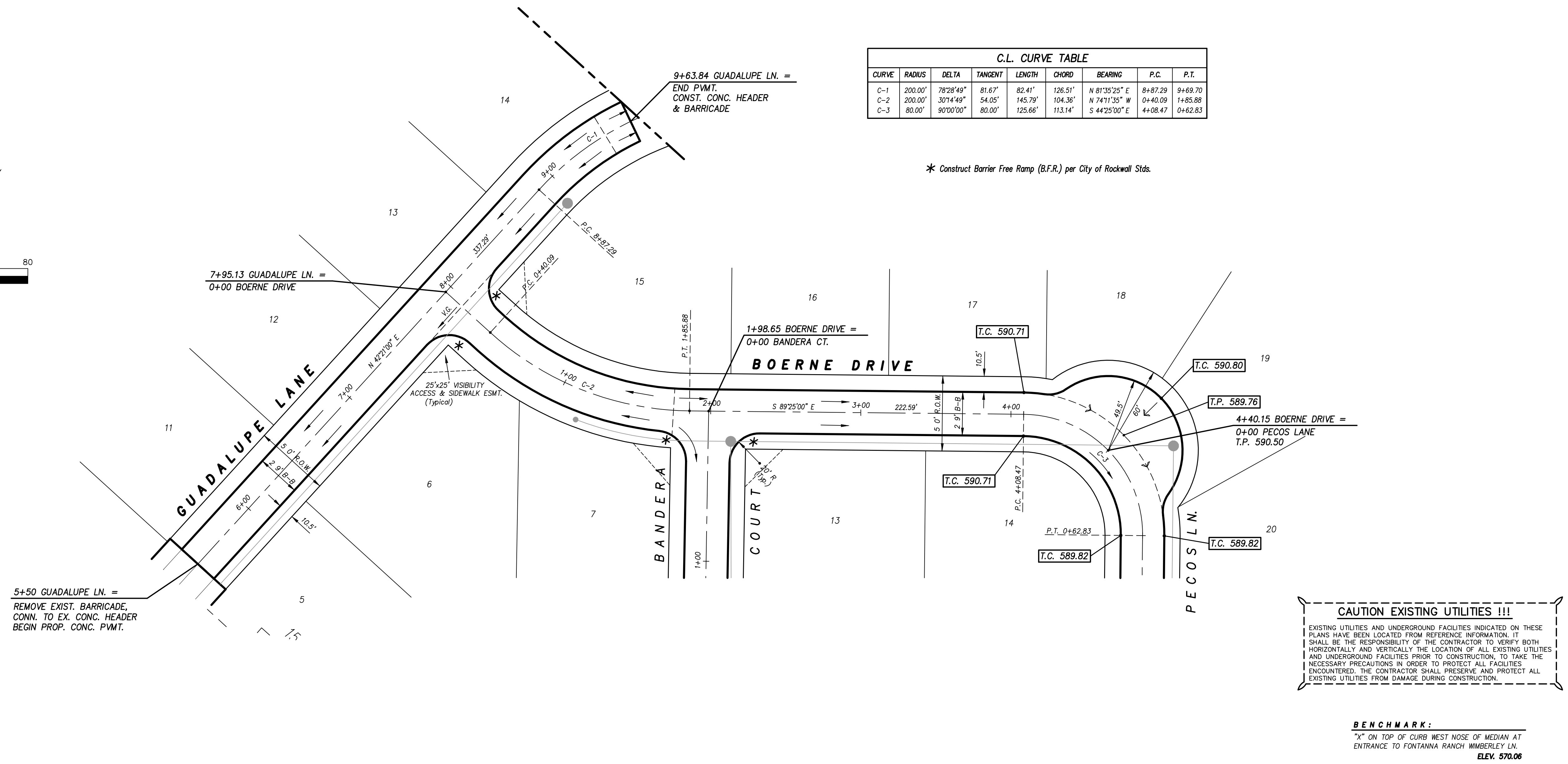


6-7-2017  
 F.C. CUNY CORPORATION  
 F-7449  
 Drawn By: FC CUNY  
 Checked By: FC CUNY  
 Date: 4-16  
 Project No.:  
 Sheet Title: **Boerne Ln. & Guadalupe Ln. Paving Plan & Profile**  
 Scale: h: 1" = 40'  
 v: 1" = 4'  
 Sheet No.: 6 of 17



C.L. CURVE TABLE								
CURVE	RADIUS	DELTA	TANGENT	LENGTH	CHORD	BEARING	P.C.	P.T.
C-1	200.00'	78°28'49"	81.67'	82.41'	126.51'	N 81°35'25" E	8+87.29	9+69.70
C-2	200.00'	307°4'49"	54.05'	145.79'	104.36'	N 74°11'35" W	0+40.09	1+85.88
C-3	80.00'	90°00'00"	80.00'	125.66'	113.14'	S 44°25'00" E	4+08.47	0+62.83

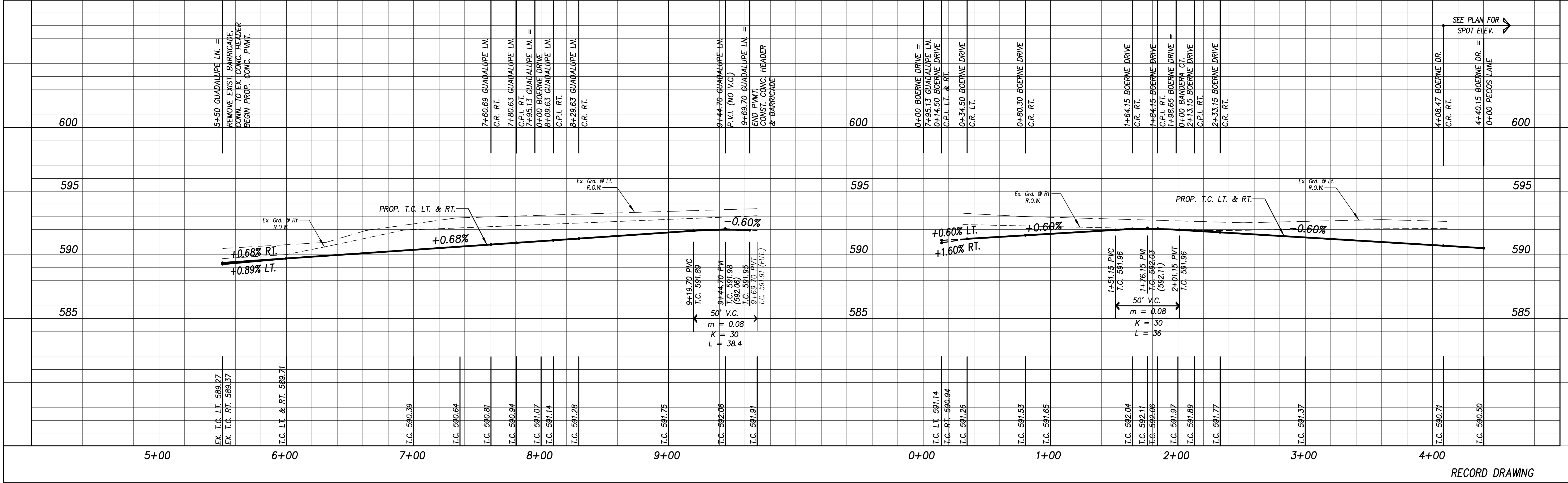
\* Construct Barrier Free Ramp (B.F.R.) per City of Rockwall Stds.



**CAUTION EXISTING UTILITIES !!!**  
 EXISTING UTILITIES AND UNDERGROUND FACILITIES INDICATED ON THESE PLANS HAVE BEEN LOCATED FROM REFERENCE INFORMATION. IT SHALL BE THE RESPONSIBILITY OF THE CONTRACTOR TO VERIFY BOTH HORIZONTALLY AND VERTICALLY THE LOCATION OF ALL EXISTING UTILITIES AND UNDERGROUND FACILITIES PRIOR TO CONSTRUCTION. TO TAKE THE NECESSARY PRECAUTIONS IN ORDER TO PROTECT ALL FACILITIES ENCOUNTERED. THE CONTRACTOR SHALL PRESERVE AND PROTECT ALL EXISTING UTILITIES FROM DAMAGE DURING CONSTRUCTION.

**BENCHMARK:**  
 \*X\* ON TOP OF CURB WEST NOSE OF MEDIAN AT ENTRANCE TO FONTANNA RANCH WIMBERLY LN. ELEV. 570.06

**GUADALUPE LANE** **BOERNE DRIVE**



RECORD DRAWING