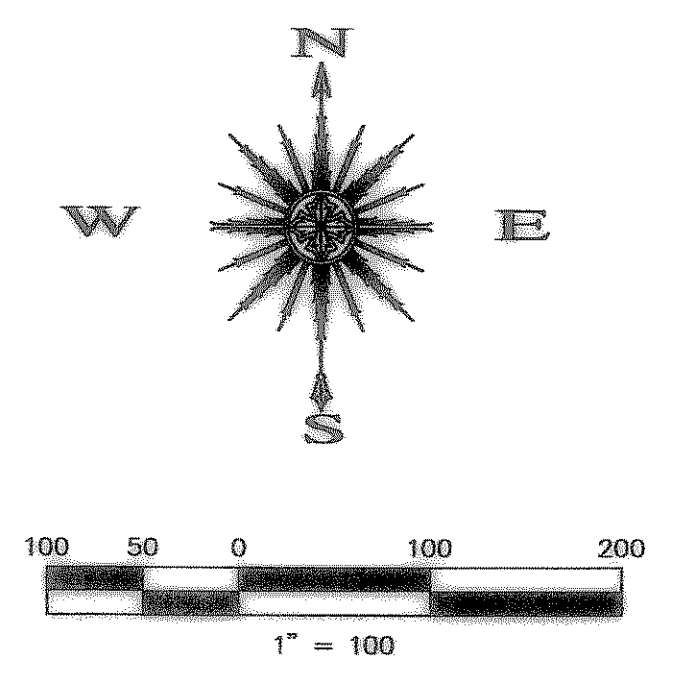
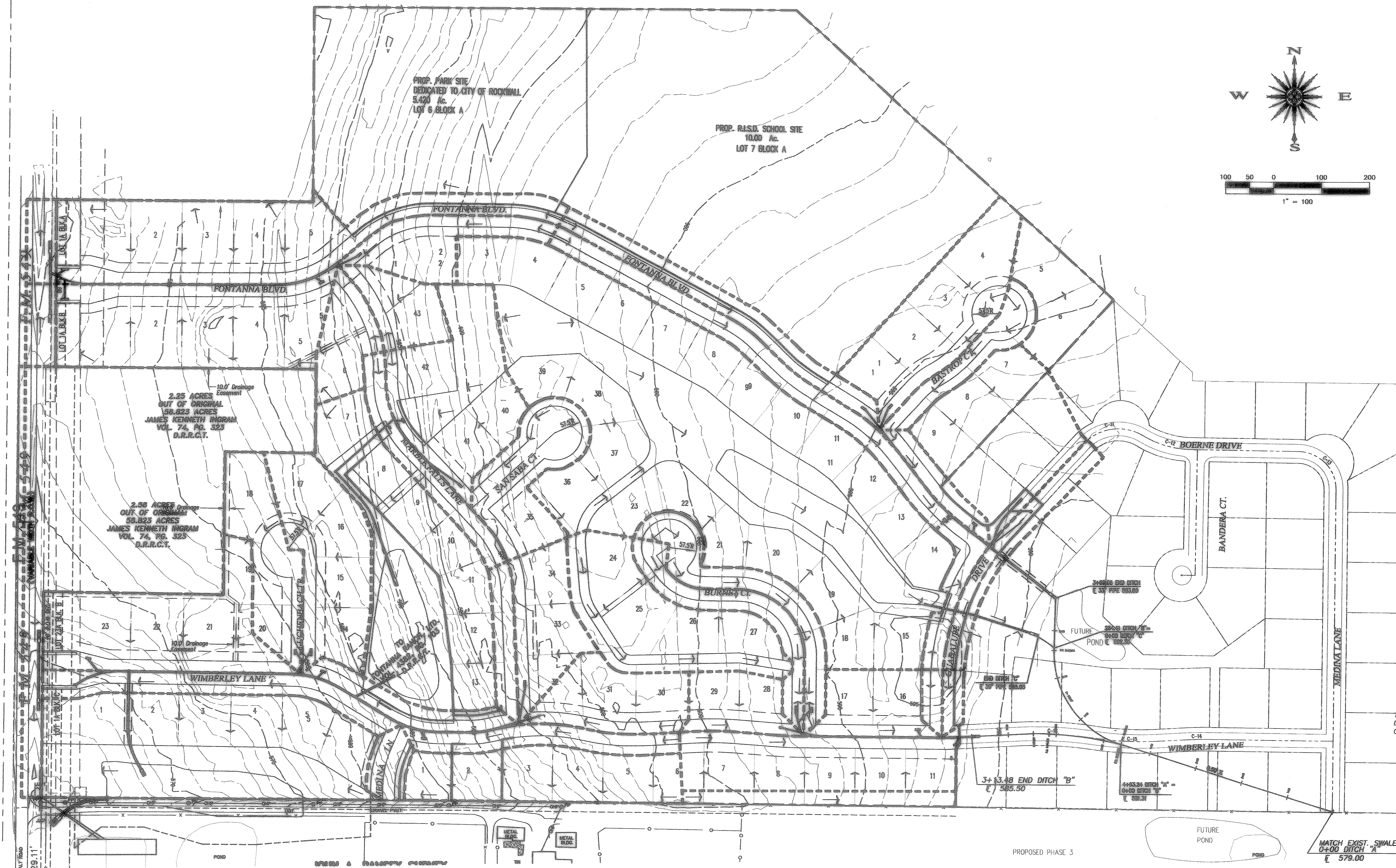
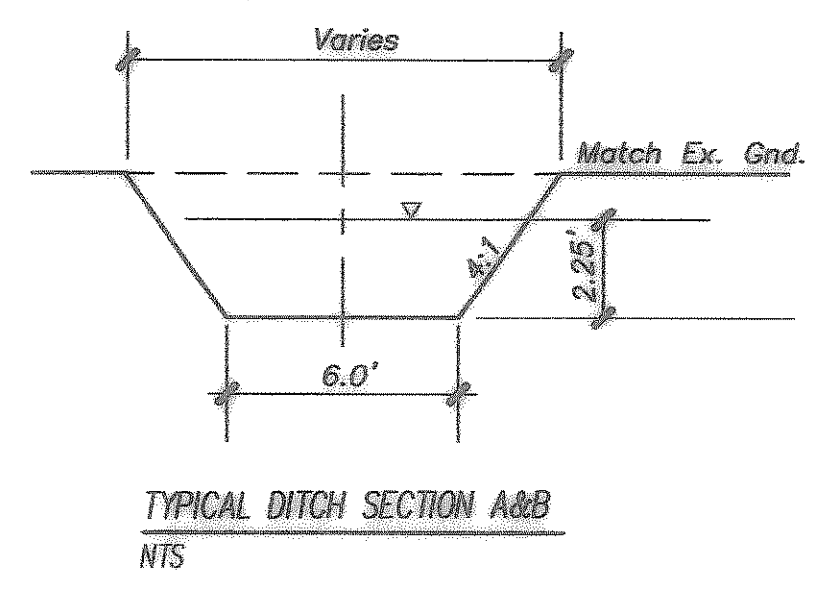
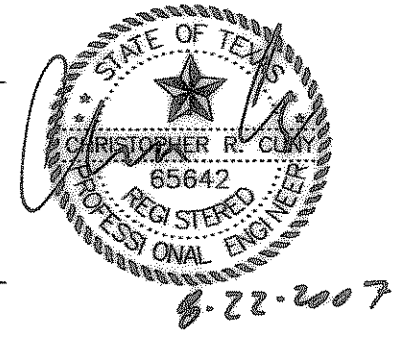


Z:\Projects\B-Ras\Record Drawings\Fontanna\Font-ditch-b12.dwg Fri Aug 24 10:17:35 2007



THE SEAL APPEARING ON THIS DOCUMENT WAS AUTHORIZED BY CHRISTOPHER R. CUNY, P.E. 65642



PROP. Q=116.11 cfs
 Qcap=131.98 cfs
 V=4.13 fps
 d=2.25'
 s=0.50%
 n=0.030

NOTE:
 STORM SEWER LINE "D" & "H" WILL DRAIN TO PROPOSED POND IN PHASE 2 & LINE G TO PROPOSED POND IN PHASE 3

Construction Record Drawing
8-22-2007

OS DITCH PLAN
Fontanna Ranch
 City of Rockwall, Rockwall County, Texas
 Spring Haven Investments, Inc.
 6780 Hillcrest Plaza Dr. • Suite 305 • Dallas, Texas 75230 • 972.366.3333

F.C. CUNY CORPORATION
 #2 Horizon Court • Heath, Texas 75032 • 469-402-7700

| | | | | | |
|-----------|-------------|----------|-----------|--------------|------------|
| Drawn By: | Checked By: | Date: | Scale: | Project No.: | Sheet No.: |
| MSC | DJW | 10/18/06 | 1" = 100' | 05-013 | 22 of 45 |