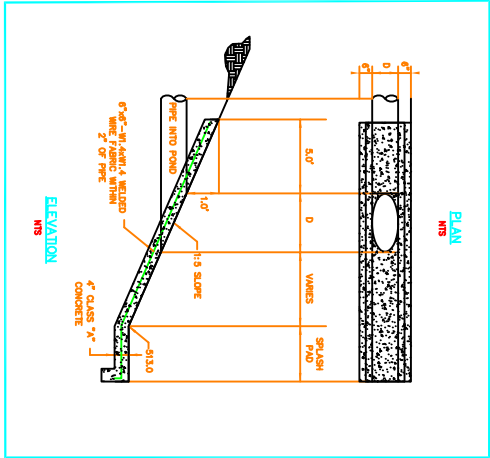
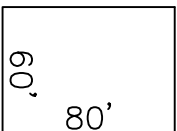




REVISED TO CONFORM TO CONSTRUCTION RECORDS.  
DATE: \_\_\_\_\_

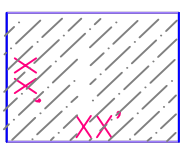


TYPICAL PAD



SEE PLAN FOR DRAINAGE AND ELEV.

NON TYPICAL PAD

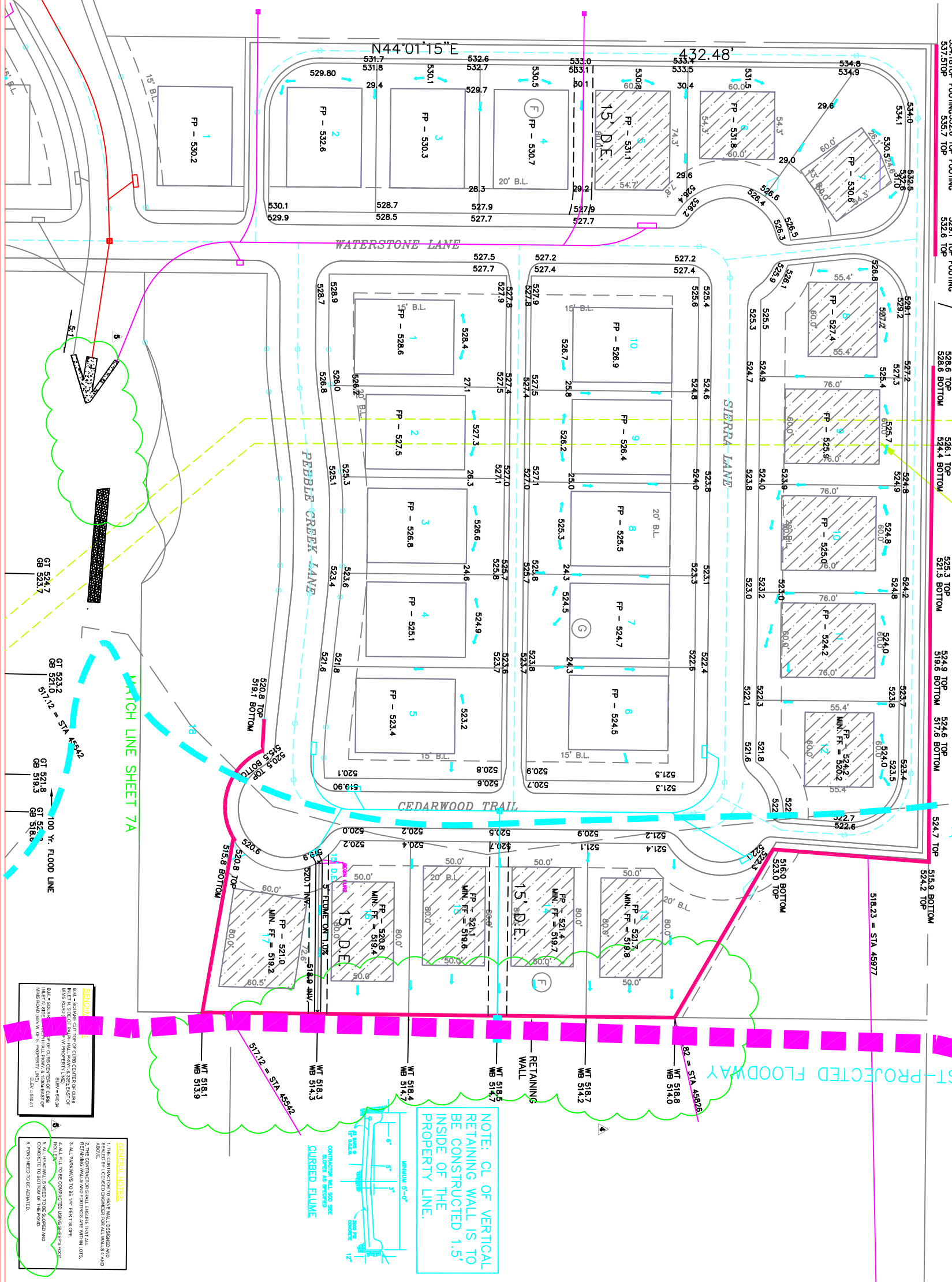


SEE PLAN FOR DRAINAGE, ELEV. AND DIMENSIONS

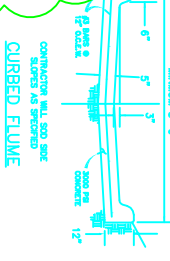
5' WALL ESMT. TO BE MAINTAINED BY H.O.A.

20' SANITARY SEWER ESMT. VOL. 169, PG. 432 D.R.R.C.T. (TO BE ABANDONED BY SEPARATE INSTRUMENT)

LOT 1, BLOCK B ROCKWALL COMMERCIAL PARK JOINT VENTURE VOL. 1284, PG. 18 D.R.R.C.T.



NOTE: CL OF VERTICAL RETAINING WALL IS TO BE CONSTRUCTED 1.5' INSIDE OF THE PROPERTY LINE.



GENERAL NOTES:

1. ALL DIMENSIONS ARE TO FACE UNLESS OTHERWISE NOTED.
2. THE CONTRACTOR SHALL ENSURE THAT ALL DIMENSIONS ARE TO FACE UNLESS OTHERWISE NOTED.
3. ALL DIMENSIONS ARE TO FACE UNLESS OTHERWISE NOTED.
4. ALL DIMENSIONS ARE TO FACE UNLESS OTHERWISE NOTED.
5. ALL DIMENSIONS ARE TO FACE UNLESS OTHERWISE NOTED.
6. ALL DIMENSIONS ARE TO FACE UNLESS OTHERWISE NOTED.
7. ALL DIMENSIONS ARE TO FACE UNLESS OTHERWISE NOTED.
8. ALL DIMENSIONS ARE TO FACE UNLESS OTHERWISE NOTED.
9. ALL DIMENSIONS ARE TO FACE UNLESS OTHERWISE NOTED.
10. ALL DIMENSIONS ARE TO FACE UNLESS OTHERWISE NOTED.

**DOUPHRATE & ASSOCIATES, INC.**  
ENGINEERING - PROJECT MANAGEMENT - SURVEYING  
2235 RIDGE RD., # 200 ROCKWALL, TEXAS 75087  
PHONE: (972)771-9004 FAX: (972)771-9005

THE SEAL APPEARING ON THIS DOCUMENT WAS AUTHORIZED BY W.L. DOUPHRATE II TEXAS P.E. NO. 80102 ON

DATE	9/05
PROJECT	0114 07 GRD
BY	7
REVISION	4. 01-31-06
REVISION	5. CHANGE DRT - CHANGER FOND
DESIGNER	K.E.B.
CHECKER	
APPROVER	

LOT GRADING PLAN  
FLAGSTONE ESTATES  
CITY OF ROCKWALL  
ROCKWALL COUNTY, TEXAS