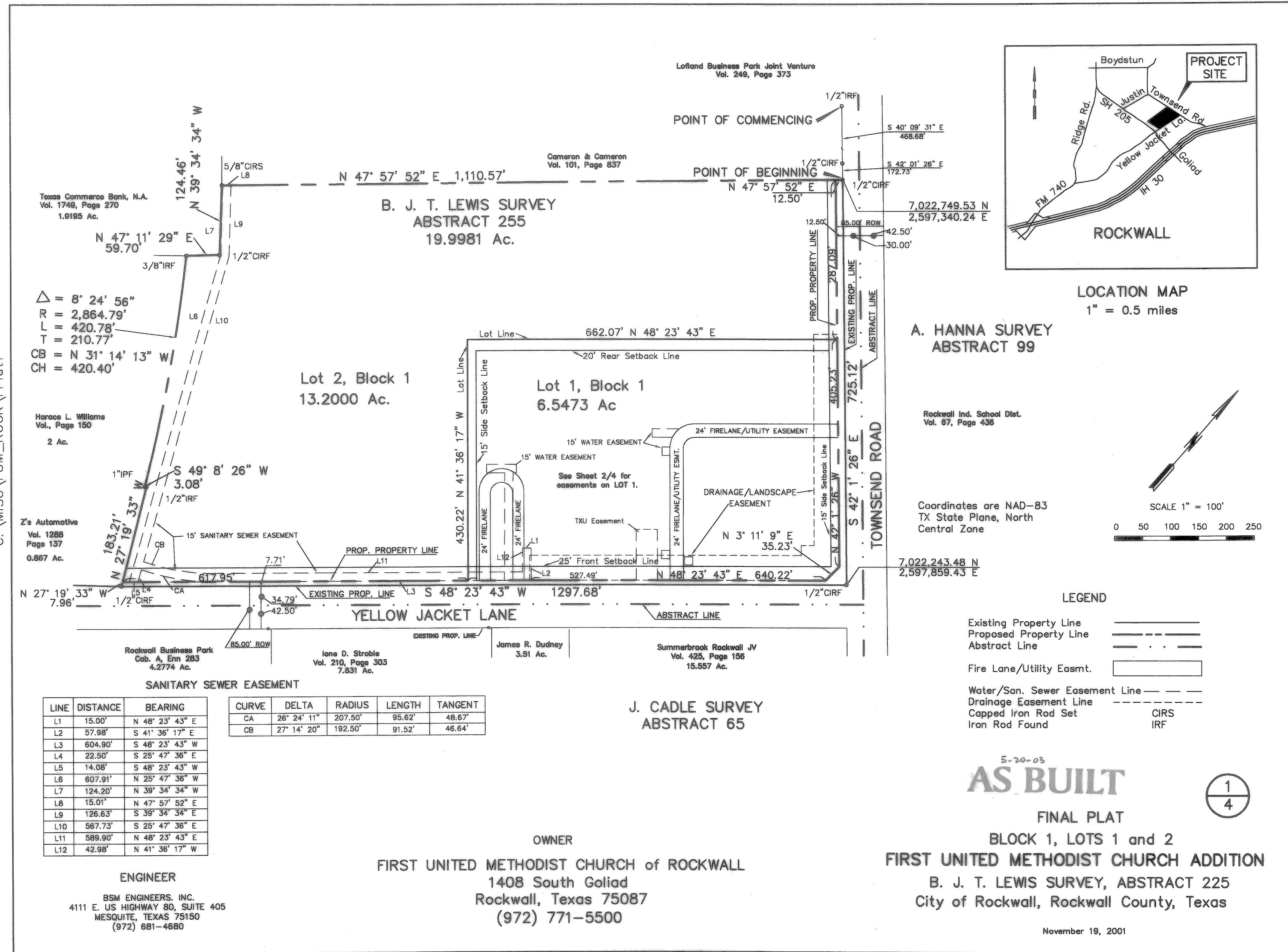


C:\MISC\FUM_ROCK\FPlot1



Texas Commerc Bank, N.A.
Vol. 1748, Page 270
1.9185 Ac.

$\Delta = 8' 24' 56''$
 $R = 2,864.79'$
 $L = 420.78'$
 $T = 210.77'$
 $CB = N 31' 14' 13'' W$
 $CH = 420.40'$

Horace L. Williams
Vol., Page 150
2 Ac.

Z's Automotive
Vol. 1288
Page 137
0.867 Ac.

Rockwall Business Park
Cab. A, Ehn 283
4.2774 Ac.

Iona D. Stroble
Vol. 210, Page 303
7.831 Ac.

James R. Dudgey
3.51 Ac.

Summerbrook Rockwall JV
Vol. 425, Page 156
15.557 Ac.

LINE	DISTANCE	BEARING
L1	15.00'	N 48° 23' 43" E
L2	57.98'	S 41° 36' 17" E
L3	604.90'	S 48° 23' 43" W
L4	22.50'	S 25° 47' 36" E
L5	14.08'	S 48° 23' 43" W
L6	607.91'	N 25° 47' 36" W
L7	124.20'	N 39° 34' 34" W
L8	15.01'	N 47° 57' 52" E
L9	126.63'	S 39° 34' 34" E
L10	567.73'	S 25° 47' 36" E
L11	589.90'	N 48° 23' 43" E
L12	42.98'	N 41° 36' 17" W

CURVE	DELTA	RADIUS	LENGTH	TANGENT
CA	26° 24' 11"	207.50'	95.62'	48.67'
CB	27° 14' 20"	192.50'	91.52'	46.64'

ENGINEER

BSM ENGINEERS, INC.
4111 E. US HIGHWAY 80, SUITE 405
MESQUITE, TEXAS 75150
(972) 681-4680

OWNER
FIRST UNITED METHODIST CHURCH of ROCKWALL
1408 South Goliad
Rockwall, Texas 75087
(972) 771-5500

J. CADLE SURVEY
ABSTRACT 65

Lofland Business Park Joint Venture
Vol. 249, Page 373

Cameron & Cameron
Vol. 101, Page 837

B. J. T. LEWIS SURVEY
ABSTRACT 255
19.9981 Ac.

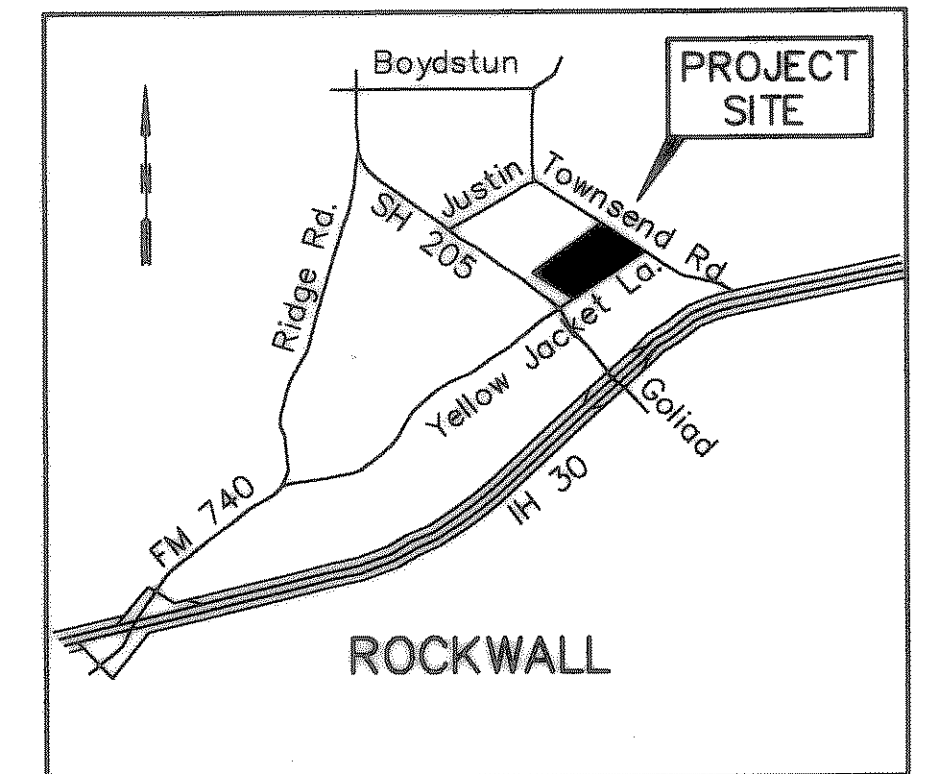
Lot 2, Block 1
13.2000 Ac.

Lot 1, Block 1
6.5473 Ac

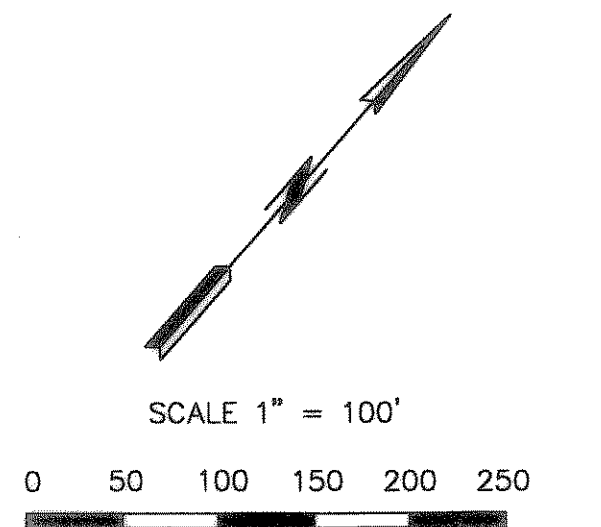
A. HANNA SURVEY
ABSTRACT 99

Rockwall Ind. School Dist.
Vol. 67, Page 438

Coordinates are NAD-83
TX State Plane, North
Central Zone



LOCATION MAP
1" = 0.5 miles



LEGEND

- Existing Property Line ———
- Proposed Property Line - - - - -
- Abstract Line
- Fire Lane/Utility Easmt. [Symbol]
- Water/San. Sewer Easement Line [Symbol]
- Drainage Easement Line [Symbol]
- Capped Iron Rod Set CIRS
- Iron Rod Found IRF

5-20-03
AS BUILT

1
4

FINAL PLAT
BLOCK 1, LOTS 1 and 2
FIRST UNITED METHODIST CHURCH ADDITION
B. J. T. LEWIS SURVEY, ABSTRACT 225
City of Rockwall, Rockwall County, Texas

November 19, 2001