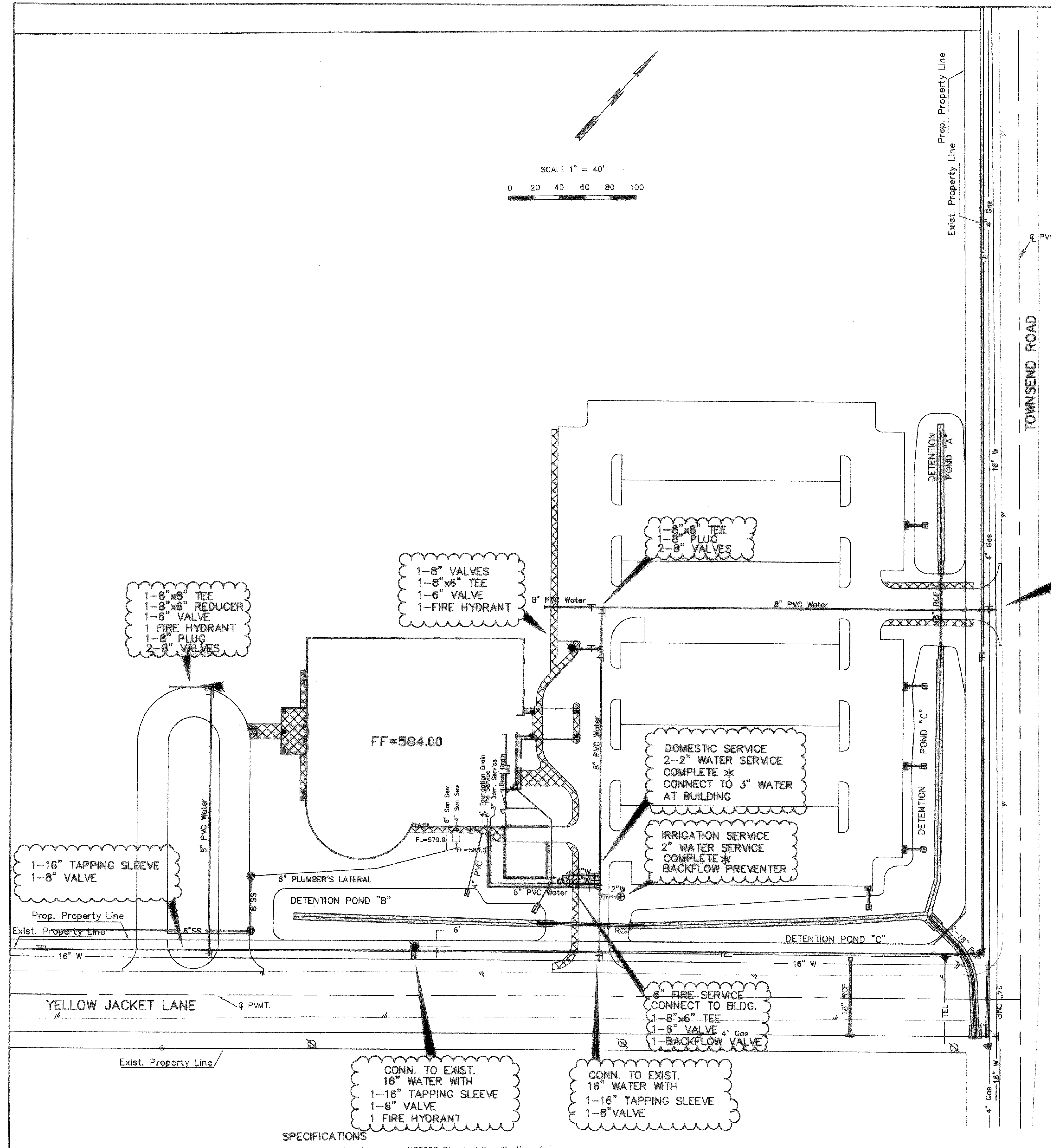
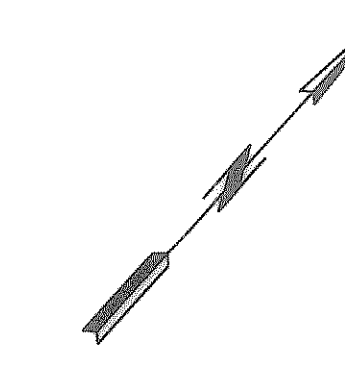
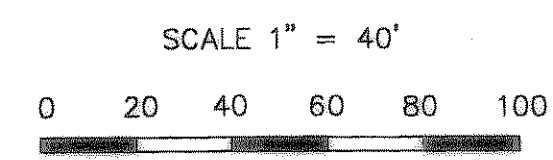


W-S
Xref:
Bldg
Border40
Culvert
Curbs
Pond
SanSew1
Sidewalk
Topo2
WS-Pipe1
Legend1



NOTES:

1. For additional layout information, see Dimensional Control Sheet C-1.
2. For Details and Construction notes, see Sheets C-9.
3. See sheet C-8 for sanitary sewer plan/profile.
4. Contractor shall make all connections to City mains, to meters supplied by City of Rockwall, and to building stubouts.
5. Fire Sprinkler Line shall be sized and installed by a State Licensed Fire Sprinkler Contractor.
6. Water mains shall be AWWA C-900, PVC, DR14, Class 200.
7. If Existing 16" Water is steel cylinder pipe, then qualified contractor will need to make connection.

LEGEND

	UTILITY POLE		CURB		ELECTRIC
	FIRE HYDRANT		572.62 SPOT ELEVATION *		GAS-STEAM
	STREET LIGHT		IRF IRON ROD FOUND		PHONE-TV
	"METER" BOX		CIRS CAPPED IRON ROD SET		WATER
	SANITARY MANHOLE		PROPERTY LINE		SANITARY SEWER
	VALVE		EXIST. CONTOUR		STORM SEWER
	PHONE MARKER		PROP. CONTOUR		
			BM OR CONTROL POINT		

*WATER SERVICE COMPLETE INCLUDES
Tapping pipe, double strap tapping saddle, corporation stop, curb stop, polyethylene service line (SDR-9), (NO COPPER Service line allowed), and meter box.
See detail on C-9.

S-20-03
AS BUILT

C-7

SPECIFICATIONS
Specifications shall be current NCTCOG Standard Specifications for Public Works Construction.

- 575.10 "□" cut on northwest corner of headwall at east entrance to Ridge Point Athletic Club on south side of Yellow Jacket Lane.
- 579.03 "□" cut on nose of median, east side of Townsend Road at entrance to high school stadium, aligned with center line of Yellow Jacket Lane.



November 19, 2001						
WATER & SEWER PLAN						
FIRST UNITED METHODIST CHURCH,						
ROCKWALL						
CITY OF ROCKWALL, TEXAS						
F&S PARTNERS and BSM ENGINEERS						
DESIGN	DRAWN	DATE	SCALE	NOTES	FILE	NO
F&S	BSM	11-01		BSM		103