

LEGEND

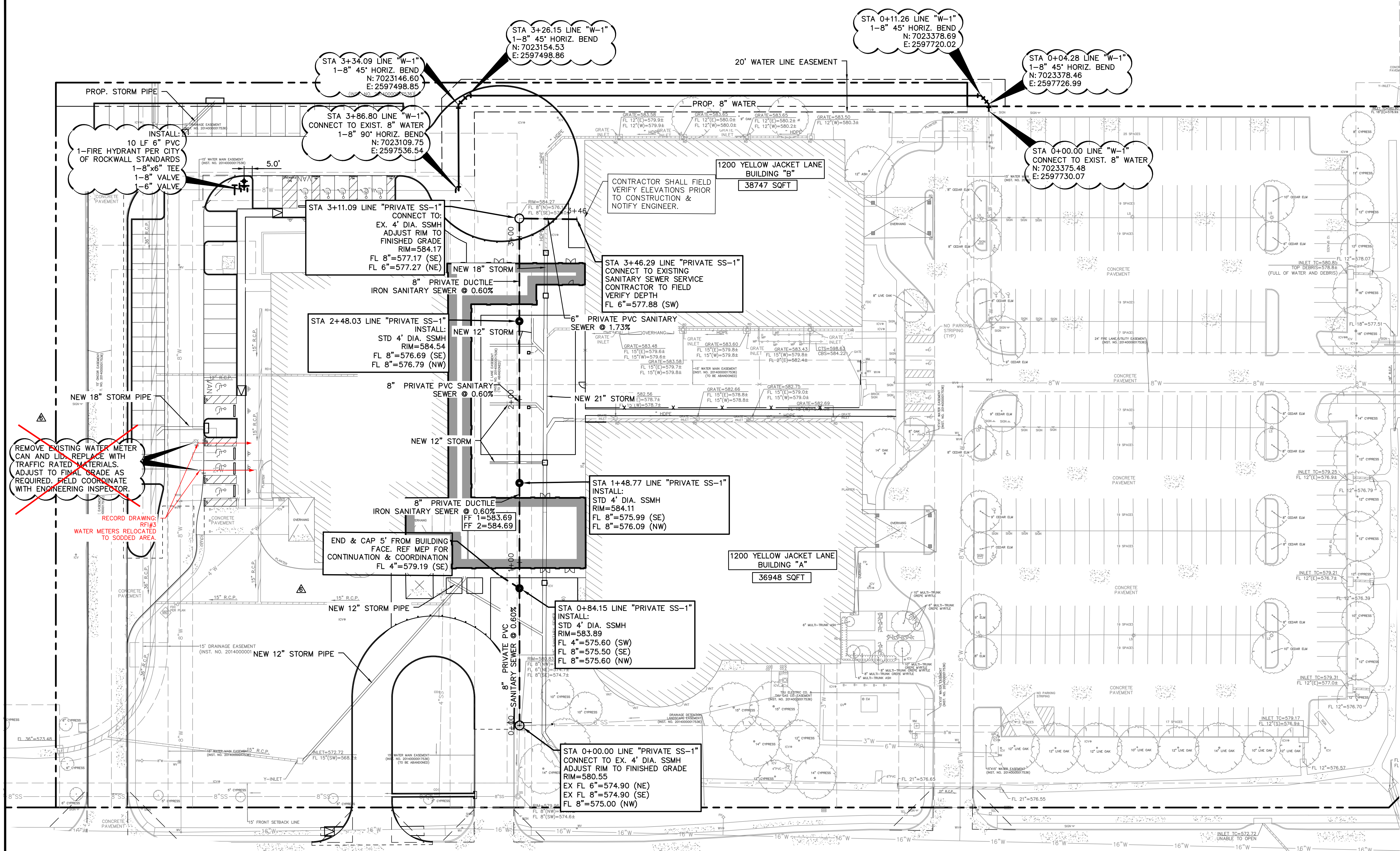
BL	BOLLARD
EM	ELECTRIC METER
PP	POWER POLE
LS	LIGHT STANDARD
WM	WATER METER
WV	WATER VALVE
ICV	IRRIGATION CONTROL VALVE
FH	FIRE HYDRANT
CH	CLEANOUT
MH	MANHOLE
TSC	TRAFFIC SIGNAL CONTROL
TSP	TRAFFIC SIGNAL POLE
TE	TELEPHONE BOX
FL	FLOOD LIGHT
FP	FLAG POLE
IR	1/2" INCH IRON ROD
IRS	W/"PACHECO KOCH" CAP SET
(C.M.)	CONTROLLING MONUMENT
---	PROPERTY LINE
x	FENCE
OH	OVERHEAD UTILITY LINE
U	UNDERGROUND ELECTRIC LINE
T	UNDERGROUND TELEPHONE LINE
C	UNDERGROUND CABLE LINE
6"W	UNDERGROUND WATER LINE
6"SS	UNDERGROUND CABLE LINE
---	PROP. FDC LOCATION
---	PROP. WATER LINE W/ BEND
---	PROP. SANITARY SEWER LINE

NORTH T. L. TOWNSEND DRIVE
(85-FOOT WIDE RIGHT-OF-WAY)

BENCH MARK LIST

BM# 1	CUT SET AT THE NORTHWEST CORNER OF THE INTERSECTION OF EAST YELLOW JACKET LANE AND NORTH T. L. TOWNSEND DRIVE ON THE SOUTH SIDE OF A CONCRETE WALK 8' SOUTH OF A STOP SIGN AND ±72' NORTH OF A BRICK SIGN.	SURFACE NORTHING=7,023,273.98 SURFACE EASTING=2,598,218.84 ELEV=578.48
BM# 2	CUT SET ON THE WEST CORNER OF A WYE INLET ON THE SOUTH SIDE OF T.L. TOWNSEND DRIVE ±470' NORTHWEST OF THE INTERSECTION OF EAST YELLOW JACKET LANE AND NORTH T. L. TOWNSEND DRIVE ±30' NORTHWEST OF THE END OF A CONCRETE FLUME AND ±170' NORTHWEST OF THE NORTHERNMOST ENTRANCE FOR ROCKWALL FIRST UNITED METHODIST CHURCH.	SURFACE NORTHING=7,023,564.53 SURFACE EASTING=2,597,901.55 ELEV=582.88
BM# 3	CUT SET ON THE WEST CORNER OF A CONCRETE INLET ON THE WESTERMOST CORNER OF A CONCRETE DRIVE FOR ROCKWALL FIRST UNITED METHODIST CHURCH ±460' WEST OF EAST YELLOW JACKET LANE, ±83' WEST OF A BRICK WALL CORNER AND ±130' WEST OF A GRATE INLET.	SURFACE NORTHING=7,023,010.16 SURFACE EASTING=2,597,385.95 ELEV=581.72
BM# 4	CUT SET ON THE WEST CORNER OF A CURB INLET ON THE WEST SIDE OF WEST YELLOW JACKET DRIVE ±160' SOUTH OF THE INTERSECTION OF EAST YELLOW JACKET LANE AND NORTH T. L. TOWNSEND DRIVE, ±21' WEST OF A WYE INLET AND ±60' NORTHWEST OF A FIRE HYDRANT.	SURFACE NORTHING=7,022,532.97 SURFACE EASTING=2,597,523.46 ELEV=572.78

EAST YELLOW JACKET LANE
(85-FOOT WIDE RIGHT-OF-WAY)



INSTALL:
10 LF 6" PVC
1-FIRE HYDRANT PER CITY
OF ROCKWALL STANDARDS
1-8"x6" TEE
1-8" VALVE
1-6" VALVE

STA 3+34.09 LINE "W-1"
1-8" 45° HORIZ. BEND
N: 7023146.60
E: 2597498.85

STA 3+26.15 LINE "W-1"
1-8" 45° HORIZ. BEND
N: 7023154.53
E: 2597498.86

STA 0+11.26 LINE "W-1"
1-8" 45° HORIZ. BEND
N: 7023378.69
E: 2597720.02

STA 0+04.28 LINE "W-1"
1-8" 45° HORIZ. BEND
N: 7023378.46
E: 2597726.99

STA 0+00.00 LINE "W-1"
CONNECT TO EXIST. 8" WATER
N: 7023375.48
E: 2597730.07

STA 3+11.09 LINE "PRIVATE SS-1"
CONNECT TO:
EX. 4" DIA. SSMH
ADJUST RIM TO
FINISHED GRADE
RIM=584.17
FL 8"=577.17 (SE)
FL 6"=577.27 (NE)

CONTRACTOR SHALL FIELD
VERIFY ELEVATIONS PRIOR TO
CONSTRUCTION &
NOTIFY ENGINEER.

STA 3+46.29 LINE "PRIVATE SS-1"
CONNECT TO EXISTING
SANITARY SEWER SERVICE
CONTRACTOR TO FIELD
VERIFY DEPTH
FL 6"=577.88 (SW)

STA 2+48.03 LINE "PRIVATE SS-1"
INSTALL:
STD 4" DIA. SSMH
RIM=584.54
FL 8"=576.69 (SE)
FL 8"=576.79 (NW)

PRIVATE PVC SANITARY
SEWER @ 1.73%

8" PRIVATE DUCTILE
IRON SANITARY SEWER @ 0.60%

PRIVATE PVC SANITARY
SEWER @ 1.73%

8" PRIVATE PVC SANITARY
SEWER @ 0.60%

PRIVATE PVC SANITARY
SEWER @ 1.73%

8" PRIVATE DUCTILE
IRON SANITARY SEWER @ 0.60%

PRIVATE PVC SANITARY
SEWER @ 1.73%

END & CAP 5' FROM BUILDING
FACE. REF MEP FOR
CONTINUATION & COORDINATION
FL 4"=579.19 (SE)

STA 1+48.77 LINE "PRIVATE SS-1"
INSTALL:
STD 4" DIA. SSMH
RIM=584.11
FL 8"=575.99 (SE)
FL 8"=576.09 (NW)

8" PRIVATE DUCTILE
IRON SANITARY SEWER @ 0.60%

PRIVATE PVC SANITARY
SEWER @ 1.73%

8" PRIVATE DUCTILE
IRON SANITARY SEWER @ 0.60%

PRIVATE PVC SANITARY
SEWER @ 1.73%

8" PRIVATE DUCTILE
IRON SANITARY SEWER @ 0.60%

PRIVATE PVC SANITARY
SEWER @ 1.73%

8" PRIVATE DUCTILE
IRON SANITARY SEWER @ 0.60%

PRIVATE PVC SANITARY
SEWER @ 1.73%

8" PRIVATE DUCTILE
IRON SANITARY SEWER @ 0.60%

PRIVATE PVC SANITARY
SEWER @ 1.73%

8" PRIVATE DUCTILE
IRON SANITARY SEWER @ 0.60%

PRIVATE PVC SANITARY
SEWER @ 1.73%

8" PRIVATE DUCTILE
IRON SANITARY SEWER @ 0.60%

PRIVATE PVC SANITARY
SEWER @ 1.73%

8" PRIVATE DUCTILE
IRON SANITARY SEWER @ 0.60%

PRIVATE PVC SANITARY
SEWER @ 1.73%

REMOVE EXISTING WATER METER
CAN AND LID. REPLACE WITH
TRAFFIC RATED MATERIALS.
ADJUST TO FINAL GRADE AS
REQUIRED. FIELD COORDINATE
WITH ENGINEERING INSPECTOR.

RECORD DRAWING:
RFI#3
WATER METERS RELOCATED
TO SODDED AREA.

RECORD DRAWING

THE SIGNED AND SEALED CONSTRUCTION DOCUMENT HAS BEEN REVISED TO REFLECT CONSTRUCTION RECORDS MAINTAINED AND PROVIDED BY THE CONTRACTOR FOR THIS PROJECT. THE INFORMATION SHOWN ON THIS RECORD DRAWING, WHICH WAS PROVIDED BY THE CONTRACTOR, OR OTHERS NOT ASSOCIATED WITH THE DESIGN ENGINEER, CANNOT BE VERIFIED FOR ACCURACY OR COMPLETENESS. PACHECO KOCH SHALL ASSUME NO LIABILITY FOR ANY CHANGES MADE DURING CONSTRUCTION THAT WERE NOT SPECIFICALLY APPROVED BY THE ENGINEER PRIOR TO CONSTRUCTION. THE SEALED CONSTRUCTION DRAWINGS ARE ON FILE AT THE OFFICES OF PACHECO KOCH.

ATTESTED BY: STEVEN M. HEILBRUN, PE
SIGNATURE: *Steven M. Heilbrun*
ENGINEER OF RECORD: STEVEN M. HEILBRUN, PE
CONTRACTOR: THE CHRISTMAN COMPANY
DATE REVISED: 07/21/2023

REF. SHEET CO.2
FOR WATER AND SANITARY
SEWER GENERAL NOTES

OWNER:
GARY HANCOCK
FIRST UNITED METHODIST ROCKWALL
1200 EAST YELLOW JACKET LANE
ROCKWALL, TEXAS 75087

NO.	DATE	REVISION
	07/21/2023	RECORD DRAWING
	07/08/2022	PR-05

Pacheco Koch 7557 RAMBLER ROAD, SUITE 1400
DALLAS, TX 75231 972.235.3031
TX REG. ENGINEERING FIRM F-469
TX REG. SURVEYING FIRM LS-10008000

SITE UTILITY PLAN
FIRST UNITED METHODIST CHURCH
YELLOW JACKET LANE & TOWNSEND ROAD
LOT 7, BLOCK 1
CITY OF ROCKWALL, ROCKWALL COUNTY, TEXAS

DESIGN	DRAWN	DATE	SCALE	NOTES	FILE	NO.
SMH	GAC	APR 2022	1"=30'			C6.1

LAND USE: CHURCH