

LANDSCAPE NOTES:

ADEQUATE MEASURES SHALL BE TAKEN TO PREVENT EROSION, IN THE EVENT THAT SIGNIFICANT EROSION OCCURS AS A RESULT OF CONSTRUCTION, ALL ERODED AREAS SHALL BE RESTORED TO THEIR ORIGINAL CONDITION.

DISCREPANCIES, IF ANY, SHOULD BE BROUGHT TO THE ATTENTION OF THE LANDSCAPE ARCHITECT.

IRRIGATION:

THE OWNER WILL INSTALL AND MAINTAIN A PERMANENT UNDERGROUND IRRIGATION SYSTEM TO WATER ALL REQUIRED LANDSCAPE AREAS. THE IRRIGATION SYSTEM, PLAN AND INSTALLATION WILL CONFORM WITH THE CITY OF ROCKWALL REGULATIONS. THE IRRIGATION SHALL BE INSTALLED AND OPERATIONAL PRIOR TO THE ISSUANCE OF THE CERTIFICATE OF OCCUPANCY.

TURF:

ALL PORTIONS OF THE SITE WHICH ARE NOT PLANTED WITH SHRUBS, GROUNDCOVER, OR COVERED BY PAYEMENT, SHALL BE HYDROMULCHED WITH COMMON BERMUDDA GRASS.

CITY OF ROCKWALL PLANNING & ZONING:

THE PROPOSED ORNAMENTAL TREES IN GROUPS OF THREE (3) LOCATED IN THE LANDSCAPE STRIP ALONG GOLIAD STREET, ARE REPLACING THE REQUIRED ONE (1) LARGE TREE EVERY 50' (FIFTY FEET). IT IS OUR OPINION THAT THE ORNAMENTAL TREES ARE BETTER SUITED TO BE PLANTED UNDER THE EXISTING OVERHEAD ELECTRICAL LINE, RATHER THAN THE REQUIRED LARGE TREES TO AVOID MASSIVE PRUNING FOR THE ELECTRICAL POWER LINE IN THE FUTURE.

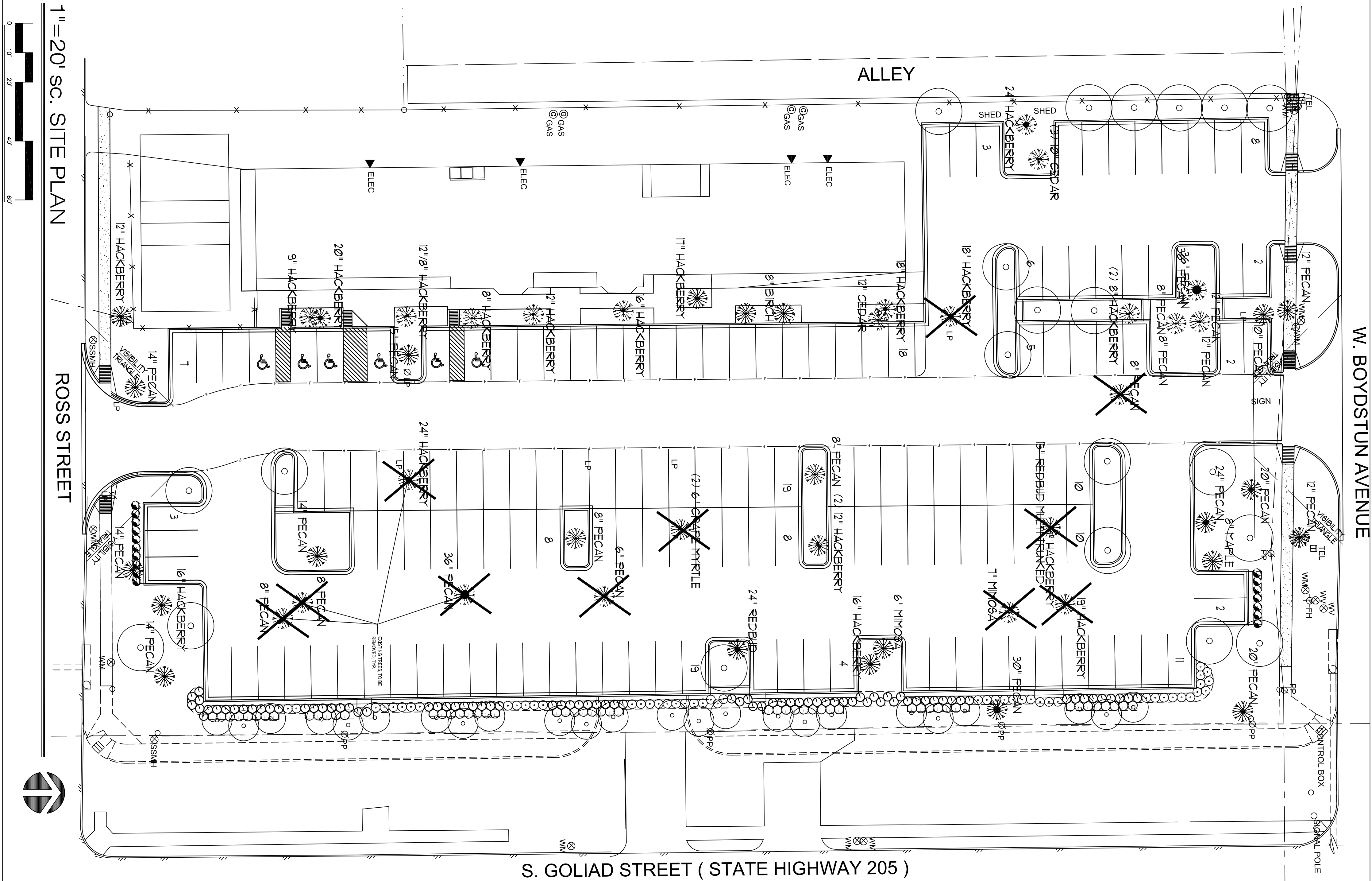
REMOVED TREES

18" HACKBERRY	8" PECAN	36" PECAN	
18" HACKBERRY	8" PECAN		
24" HACKBERRY	6" PECAN		
24" HACKBERRY	8" PECAN		
40"	30" PECAN	36" PECAN	TOTAL REMOVED
		12"	TOTAL MITIGATION

SAVED TREES

10" PECAN	16" HACKBERRY	8" MAPLE	10" CHERRY LAUREL	6" MIMOSA	8" BIRCH	(3) 10" CEDAR
14" PECAN	12" HACKBERRY					
20" PECAN	12" HACKBERRY					
24" PECAN	16" HACKBERRY					
20" PECAN	12" HACKBERRY					
8" PECAN	(2) 12" HACKBERRY					
14" PECAN	8" HACKBERRY					
8" PECAN	12" HACKBERRY					
14" PECAN	8" HACKBERRY					
8" PECAN	14" PECAN					
5" PECAN	14" PECAN					
12" PECAN	24" HACKBERRY					
8" PECAN						
36" PECAN						
8" PECAN						

* ONLY TREES WITH 24" CALIPER OR LARGER MAY BE USED FOR CREDIT



Legend

- Removed Tree
- Proposed Replacement Tree
- Existing Tree to Remain

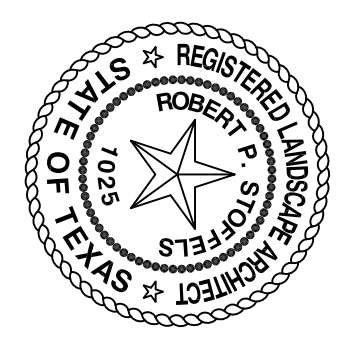
Tree Mitigation Charts

Caliper Inches of Species Removed	% To Mitigate	Caliper Inches to Mitigate
80" Caliper Inches of Hackberry Removed	50%	40" Caliper to Mitigate
30" Caliper Inches of Pecan & 24" Cal.	100%	30" Caliper to Mitigate
36" Caliper Inches of Pecan > 24" Cal.	200%	12" Caliper to Mitigate
146" Total Caliper Inches Removed		142" to Mitigate

TOTAL CALIPER INCHES PROTECTED
24" Total Caliper Inches of Protected Trees Saved - 142" Total Caliper Inches to Mitigate
118" Remaining Caliper Inches to Mitigate

REPLACEMENT TREES

Total Replacement Trees Required	Total Replacement Trees Provided
24 Trees	24 Trees *



DUNKIN SIMS STOFFELS, INC
Landscape Architects/Planners
9601 White Rock Trail, Suite 200, Dallas, Texas 75238
Phone: (714) 553-5778 Fax: (714) 553-5181

The Customer agrees to the standard fee of \$1,000 per hour for the project and to the standard fee of \$1,000 per hour for the site visit and to the standard fee of \$1,000 per hour for the preparation and submission of the final landscape plan. Payment shall be made in advance of any work on the project. Payment shall be made in advance of any work on the project. Payment shall be made in advance of any work on the project.

This drawing is issued for planning and permitting purposes under the authority of Robert P. Stoffels, License No. 1029, on February 18, 2010.

REV. NO.	TYPE OF WORK	ENG.	DATE	CITY OF	DATE
TREE MITIGATION PLAN					
2008 PARKING ADDITION					
FIRST BAPTIST CHURCH - ROCKWALL, TX					
PUBLIC WORKS DEPARTMENT					
CITY OF ROCKWALL, TEXAS					
DESIGN DRAWN	DATE	SCALE	NOTES	FILE	NO.
B.S.	February 18, 2010	1" = 20'-0"			L-2