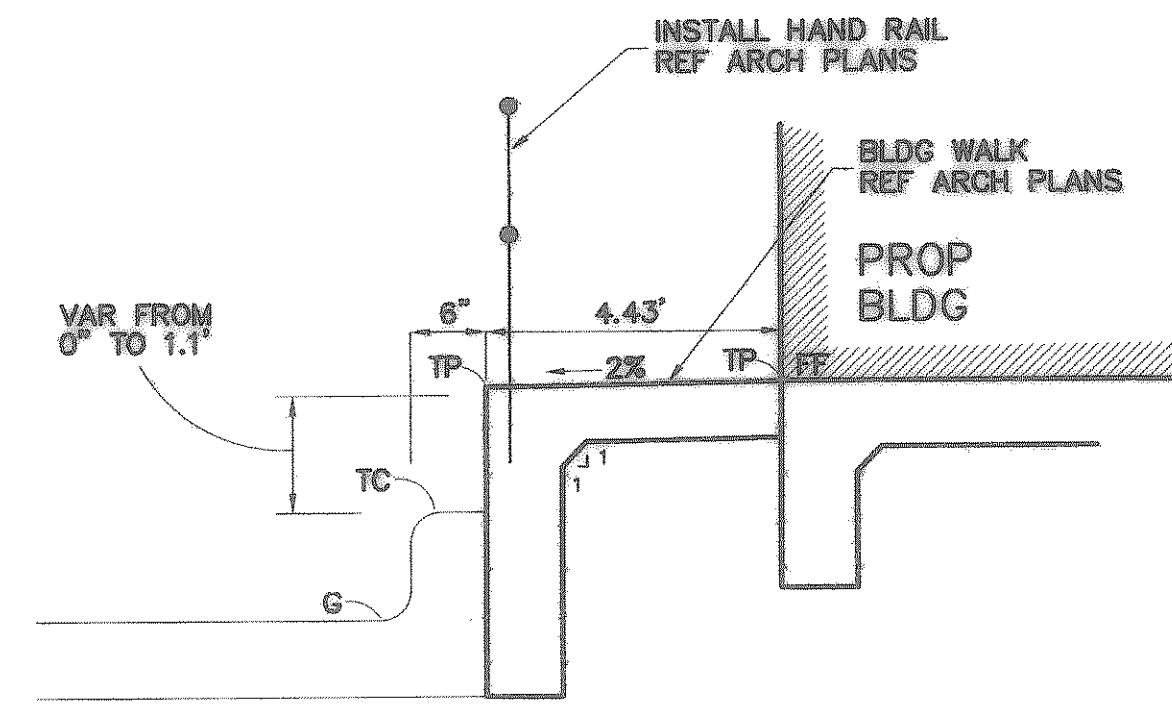
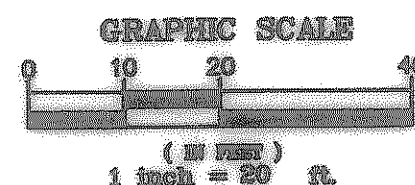
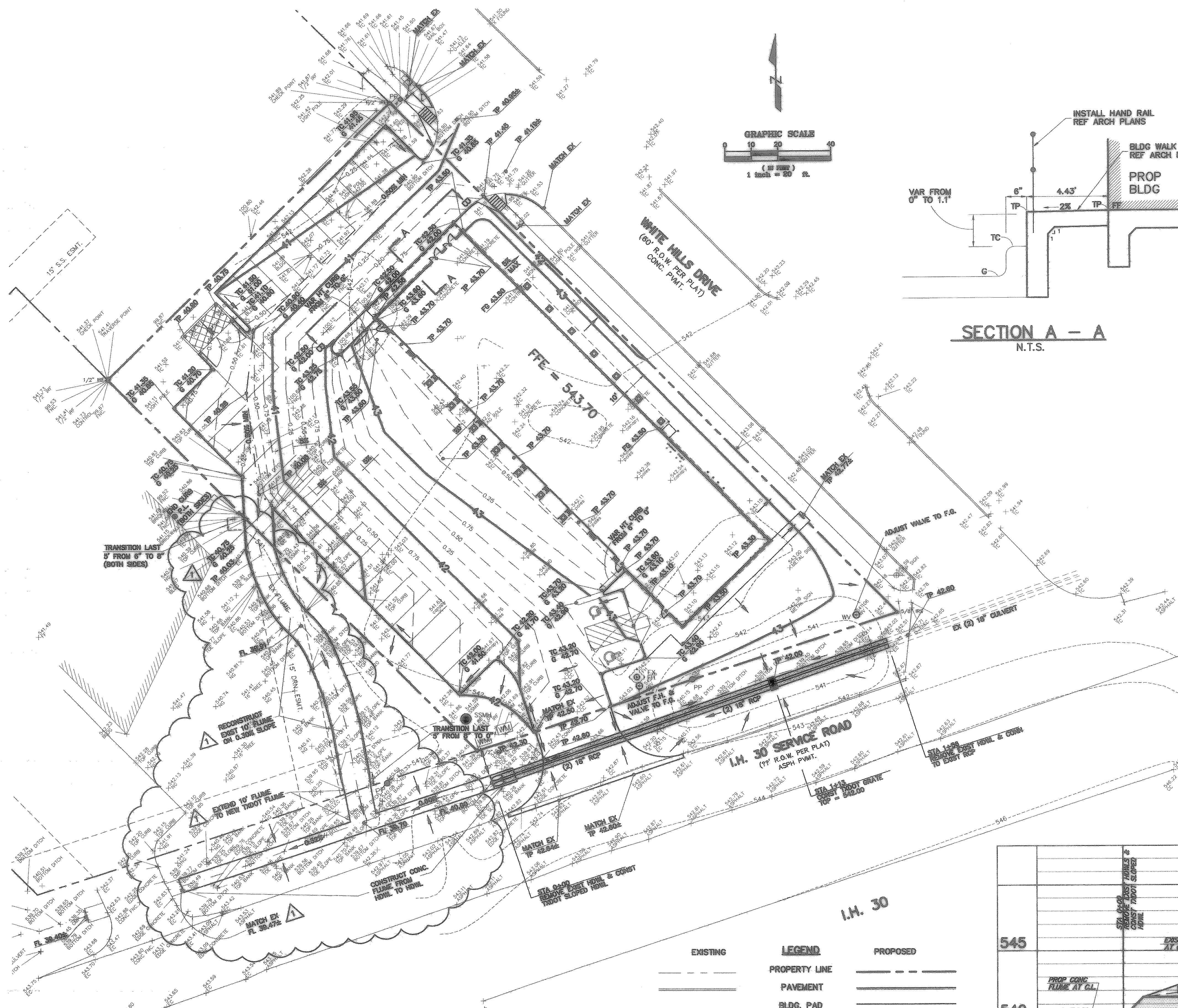
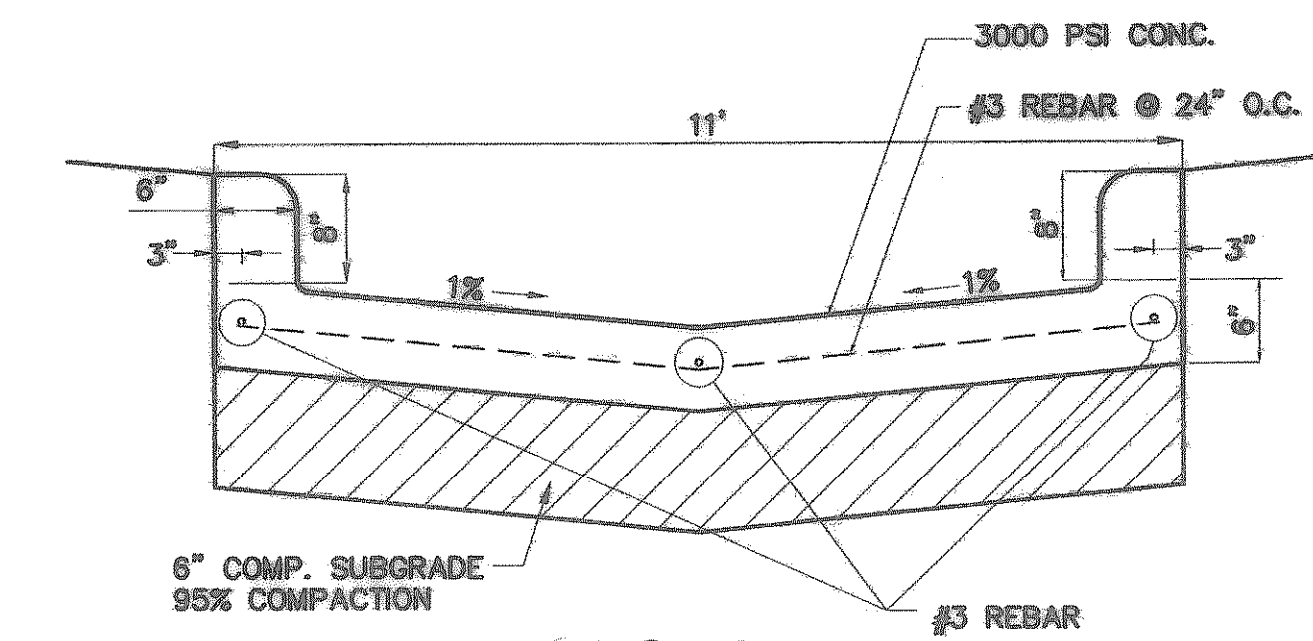


X:\Land Projects\2007\268-33\dwg\01C03GRD.dwg 10/13/2008 4:28:38 PM CDT



**SECTION A - A**  
N.T.S.



**FLUME DETAIL**  
N.T.S.

$$Q = 1.486(S)^{1/2}(R)^{2/3}(A)$$

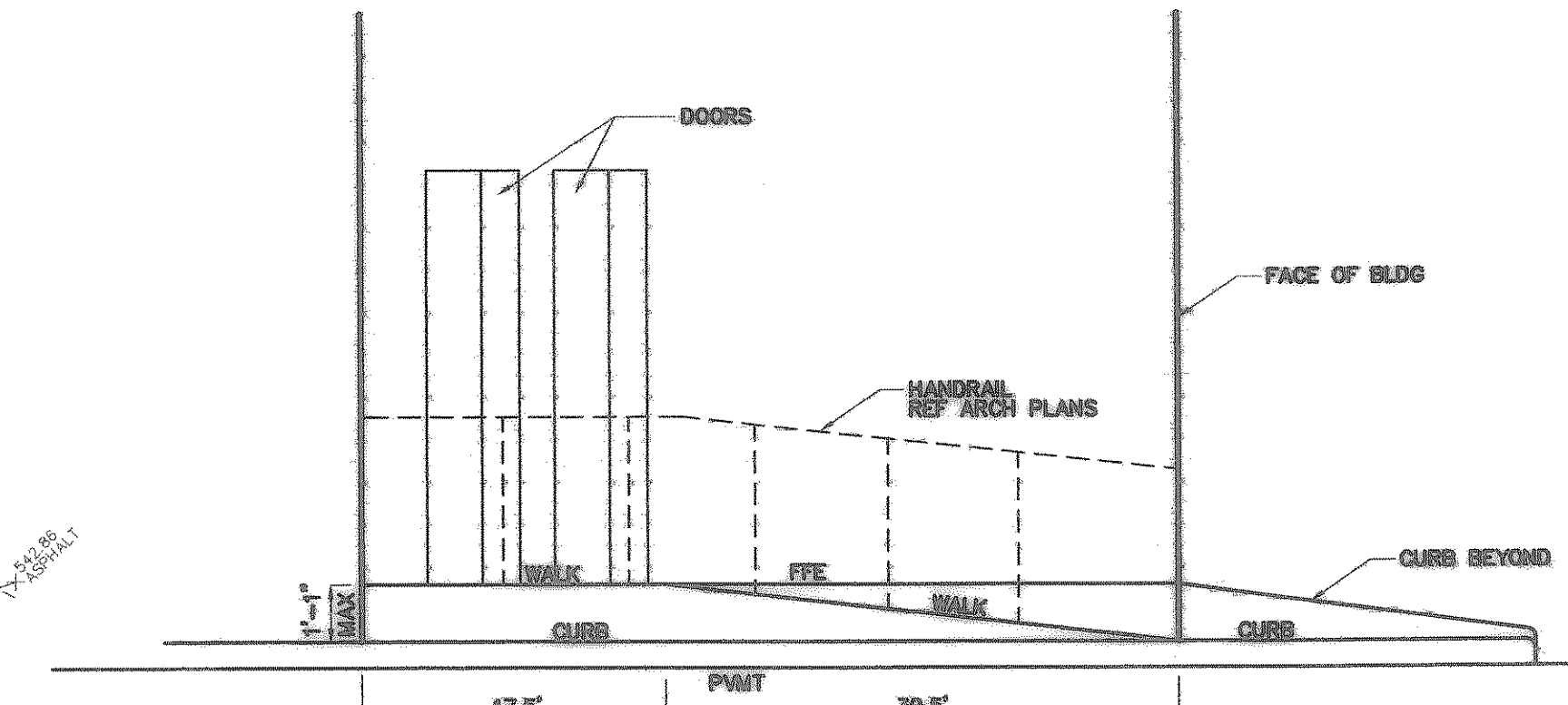
$$S = 0.003 \text{ ft/ft}$$

$$A = 6.7 \text{ ft}^2$$

$$R = 0.015$$

$$P = A/P$$

$$Q = 25.60 \text{ cfs}$$



**SECTION B - B**  
H: 1"=10'  
V: 1"=3'

**CONSTRUCTION RECORDS**  
BY: J.J.V.  
THIS DRAWING INDICATES THE WORK COMPLETED PER INFORMATION SUPPLIED BY THE CONTRACTOR ACTUAL ON THE GROUND SURVEY VERIFICATION WAS NOT PERFORMED EXCEPT AS SPECIFICALLY NOTED. ALL LOT AND RIGHT-OF-WAY CORNERS HAVE BEEN MARKED WITH 1/2" IRON PINS.

**GENERAL NOTES**

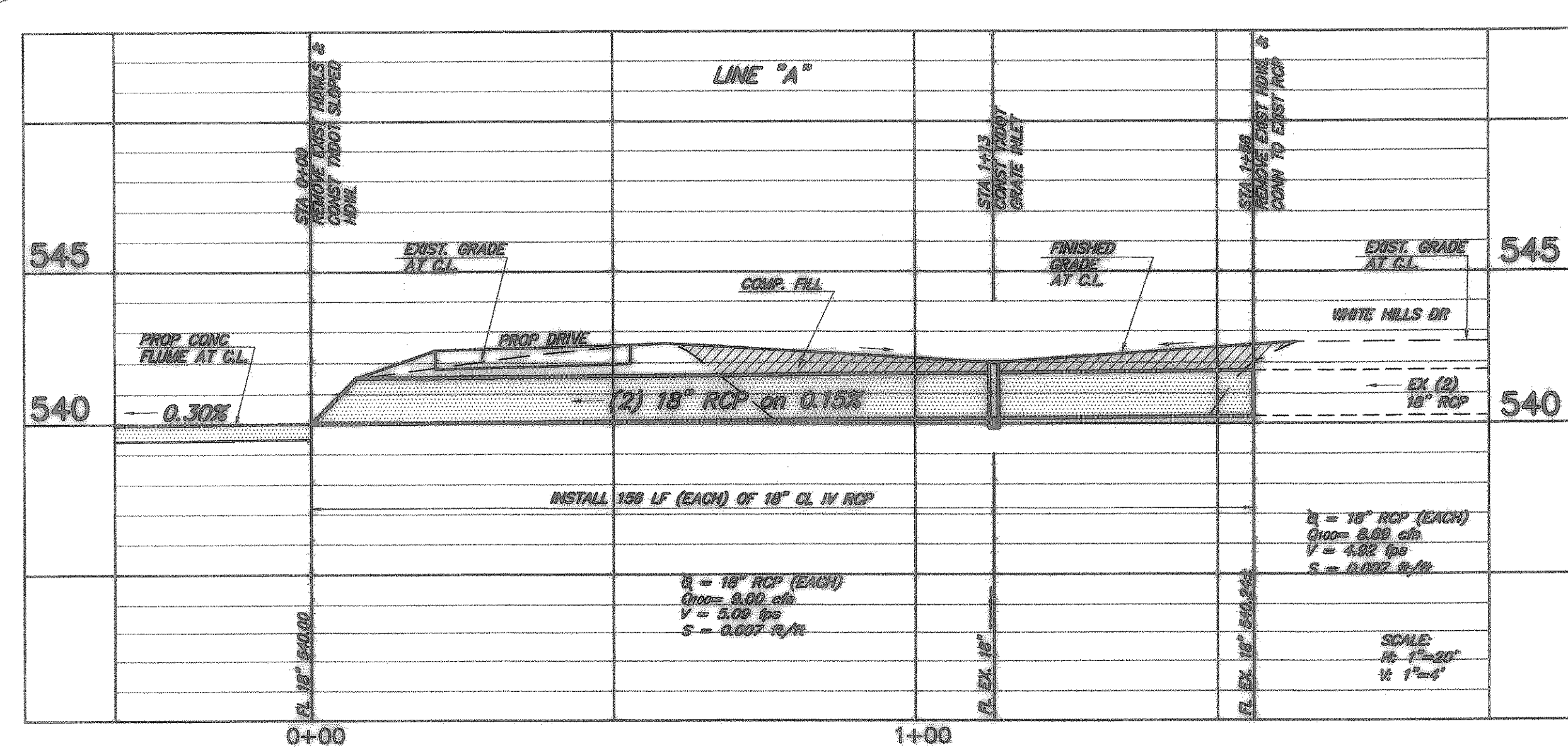
- Topographic survey and Land Title Survey by Foresight Land Services L.L.C., dated 10/23/07
- See sheet C4 for erosion control details and notes.
- See sheet C6 for general notes and grading notes.

**BENCHMARK**

\*"X" CUT ON SOUTHWEST TOP CORNER OF CULVERT LOCATED APPROX. 68.6' EAST OF THE SOUTHWEST CORNER OF SUBJECT TRACT.

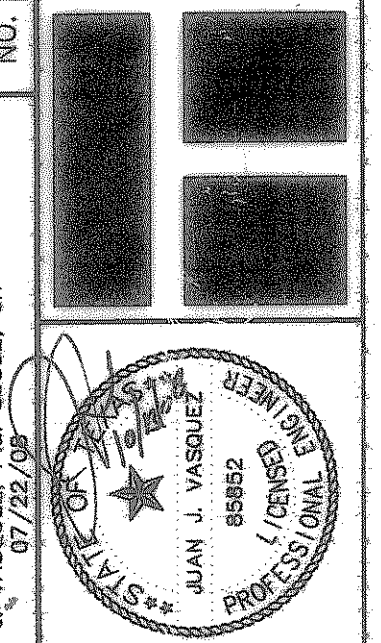
ELEV. = 542.15

EXISTING	LEGEND	PROPOSED
---	PROPERTY LINE	---
====	PAVEMENT	====
---	BLDG. PAD	---
---	CONTOUR	42
+542.00	TOP OF CURB. ELEV.	TC 42.80
+541.50	GUTTER ELEV.	G 42.00
+542.00	TOP OF PWMT. ELEV.	TP 42.80
+542.00	FINISH GRADE ELEV.	FG 42.00
	FLOW	→
	SWALE	---
	RIDGE	---
	STORM SEWER	---



NO.	DATE	NOTE	APP.
10/13/08	OFFSITE FLUME	JJV	
7/22/08	OFFSITE & TROUT FLUME	TPJ	

**TOMDEN ENGINEERING, L.L.P.**  
12655 N. Central Expwy., Suite 1016  
Dallas, Texas 75243  
Ph: 972.386.6446 Fax: 972.386.6409  
mail@tomden.com



**Mays & Company**  
Real Estate Development  
6000 Cherry Lane, Suite 200, Dallas, Texas 75243  
Phone: (214) 348-8888 Fax: (214) 348-8889

**GRADING PLAN**  
FIRESTONE  
LOT 1, BLOCK A  
DERRICK ADDITION  
ROCKWALL, TEXAS

Scale: 1" = 20'  
Designed by: J.J.V.  
Drawn by: J.H.M.  
Checked by: J.J.V.  
S:\LP\2007\268-33\dwg\01C03GRD

SHEET  
**C3**