

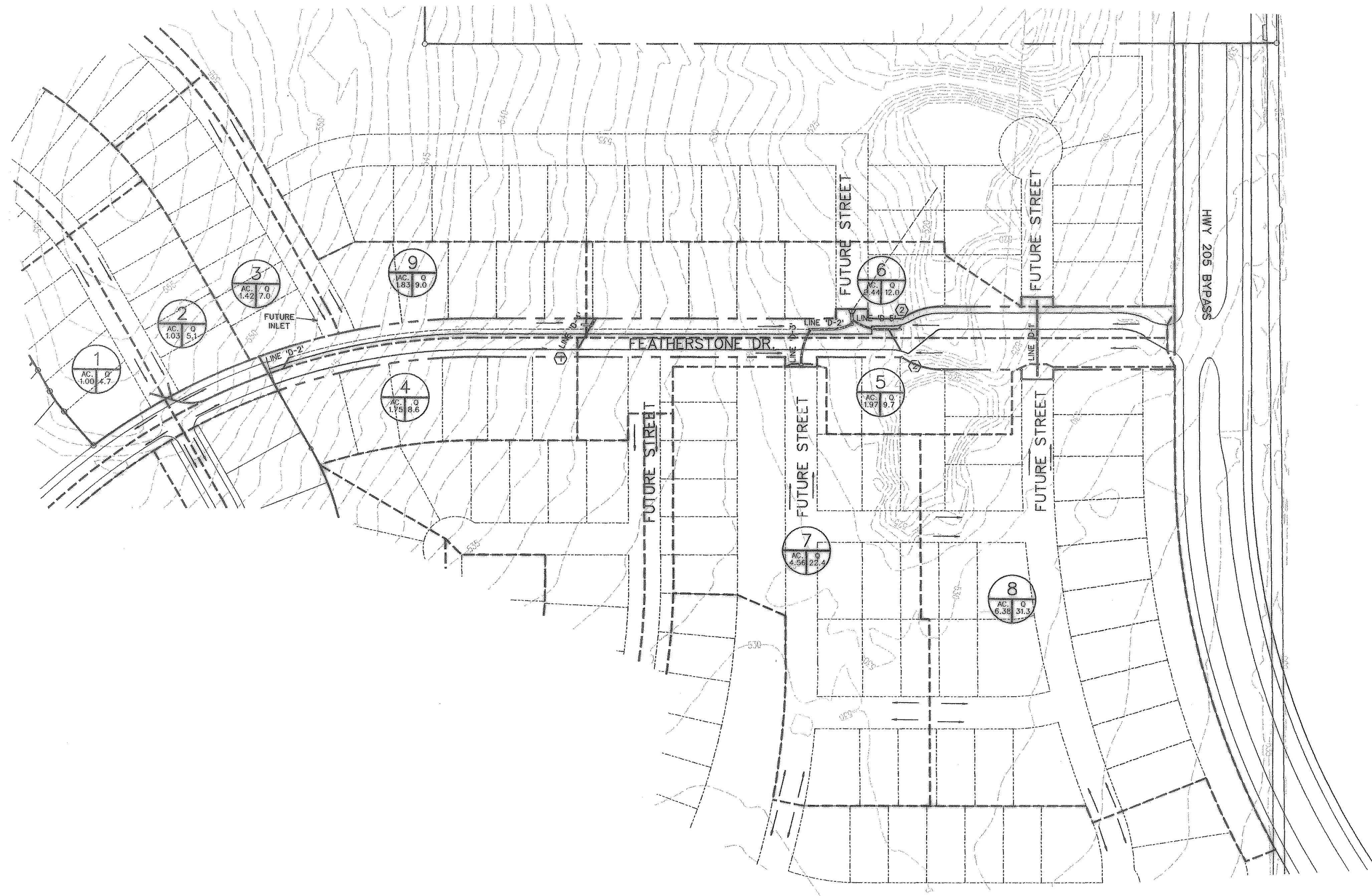
0 50 100 200
SCALE: 1" = 100'

RUNOFF COMPUTATIONS						
DRAINAGE NO.	AREA AC.	RUNOFF COEFF. (C)	TOTAL Cx A	Tc min.	I (100) in/hr	Q (100) cfs
1	1.00	0.5	0.50	10	9.8	4.9
2	1.03	0.5	0.51	10	9.8	5.0
3	1.42	0.5	0.71	10	9.8	6.9
4	1.75	0.5	0.88	10	9.8	8.6
5	1.97	0.5	0.99	10	9.8	9.7
6	2.44	0.5	1.22	10	9.8	12.0
7	4.56	0.5	2.28	10	9.8	22.3
8	6.38	0.5	3.19	10	9.8	31.3
9	1.83	0.5	0.92	10	9.8	9.0

* FUTURE DEVELOPMENT

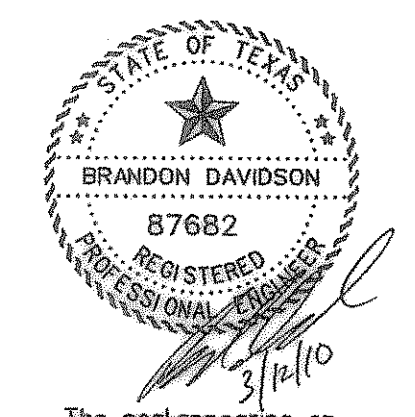
LEGEND

- PROP. STORM SEWER
- PROP. CURB INLETS
- PROP. CONC. HEADWALL
- EXIST. STORM SEWER
- DRAINAGE AREA DIVIDE
- FLOW ARROW
- DRAINAGE AREA NO.



INLET DESIGN		CALCULATIONS												
INLET NO.	Location Pva Sta.	AREA RUNOFF					SELECTED INLET							
		Design Storm Frequency	Time of Conc. (min.)	Intensity I (in/hr.)	Runoff Coeff. C	Area (ac.)	Area (sq. ft.)	Carry-Over from Upstream (c.f.s.)	Total Gutter Flow (c.f.s.)	Gutter Slope (ft./100 ft.)	Crown Type	Length (ft.)	Inlet Type	Capacity (c.f.s.)
1	38+33.72	100	10	9.8	0.5	4	1.75	8.6	9.6	2.10%	6" pbi	15'	STD.	6.8
2	41+40.00	100	10	9.8	0.5	5	1.97	9.7	9.7	Low pt	6" pbi	10'	STD.	21.0
2	41+40.00	100	10	9.8	0.5	6	2.44	12.0	12.0	Low pt	6" pbi	10'	STD.	21.0

AS-BUILT MARCH 2010
BASED ON INFORMATION PROVIDED BY CONTRACTORS
AND VERIFIED BY ON-SITE SURVEYING



The seal appearing on this document was authorized by Brandon Davidson P.E. 87682, on March 12, 2010

CORWIN ENGINEERING, INC.
200 W. BELMONT, SUITE E
ALLEN, TEXAS 75013 (972) 396-1200
TBPE FIRM #5951

DEVELOPMENT PLANS FOR
FEATHERSTONE DRIVE EXTENSION
ROCKWALL, TEXAS

DRAINAGE AREA MAP

DRAWN BY	DESIGNED BY CEI	CHECKED BY CEI	SHEET NO.
JOB NUMBER 09021	DATE MAY 13, 2009	SCALE: 1"=100'	2 OF 7