

RECORD DRAWING
 THIS RECORD DRAWING HEREIN REFLECTS TO THE BEST OF THE DESIGN ENGINEERS KNOWLEDGE, THE APPROXIMATE LOCATION OF THE CONSTRUCTED WORK, USING INFORMATION AS PROVIDED BY THE CONTRACTORS.

PERRY HESCOCK AND ASSOCIATES
 1202 N. RICHARDSON DRIVE, SUITE #504, RICHARDSON, TEXAS 75080
 TEL: (972)286-8192 FAX: (972)286-4604

December 06, 2006
 Evergreen Rockwall E-2.dwg

[Handwritten Signature]
 6/3/08

No.	Date	Revisions	App.

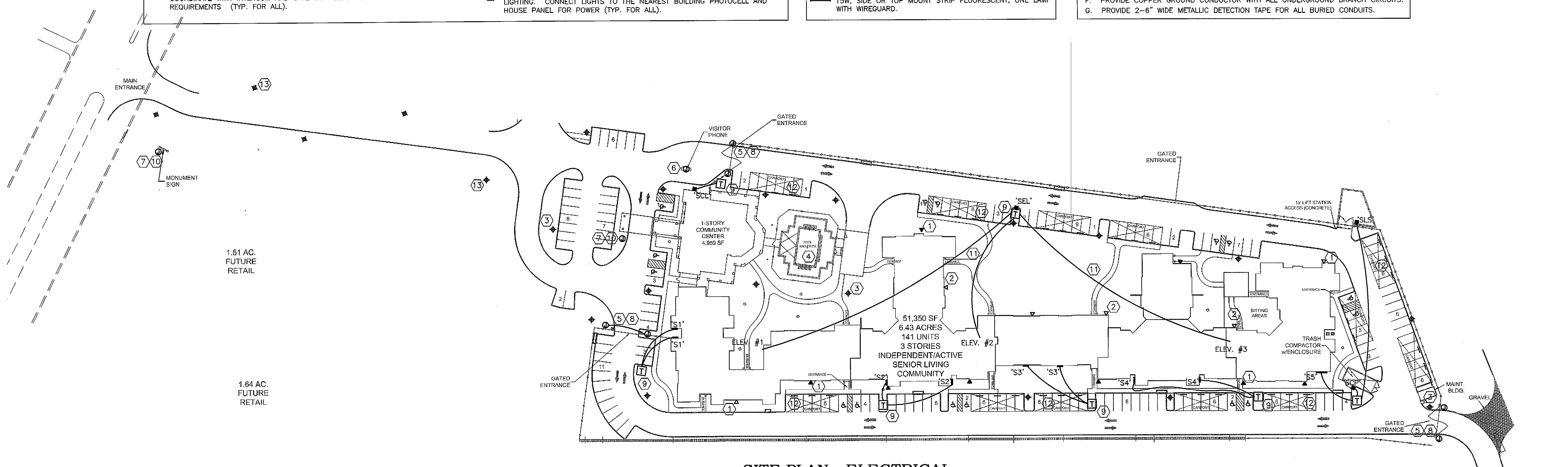
Kimley-Horn and Associates, Inc.
 12700 Park Central Drive, Suite 1800
 Dallas, Texas 75251
 Tel. No. (972) 770-1300
 Fax No. (972) 235-3820

KEYED NOTES:

- 1 FIELD ADJUST ALL FIXTURES SUCH THAT ILLUMINATES THE PARKING LOT AND NOT SURROUNDING NEIGHBORHOOD. CONNECT TO BUILDING PHOTOCCELL (TYP. FOR ALL). CONTRACTOR SHALL BE RESPONSIBLE FOR PROPER AIMING OF ALL SITE FIXTURES TO MEET CITY SITE LIGHTING REQUIREMENTS. IF FIXTURES ADJACENT TO PROPERTY LINES REQUIRE 'CUT-OFFS', THESE SHALL BE INCLUDED.
- 2 FIELD ADJUST ALL FIXTURES SUCH THAT ILLUMINATES THE GROUNDS/COURTYARD AND NOT SURROUNDING BUILDINGS. CONNECT TO BUILDING PHOTOCCELL (TYP. FOR ALL). CONTRACTOR SHALL BE RESPONSIBLE FOR PROPER AIMING OF ALL FIXTURES TO MEET CITY LIGHTING REQUIREMENTS. IF FIXTURES ADJACENT TO PROPERTY LINES REQUIRE 'CUT-OFFS', THESE SHALL BE INCLUDED.
- 3 PROVIDE WEATHERPROOF J-BOX, LIGHT FIXTURE AND 10' POLE FOR GROUNDS/COURTYARD LIGHTING. CONNECT LIGHTS TO THE NEAREST BUILDING PHOTOCCELL AND HOUSE PANEL FOR POWER (TYP. FOR ALL).
- 4 PROVIDE A QUAD GFI/WP RECEPTACLE AND LIGHT AT THE POOL EQUIPMENT AREA FOR SERVICING. COORDINATE WITH POOL CONTRACTOR LOCATION OF POOL EQUIPMENT AND ALL PUMP REQUIREMENTS. PROVIDE FOR A DEDICATED TELEPHONE LINE TO MEET 911 EMERGENCY SERVICE DIAL-UP REQUIREMENTS.
- 5 COORDINATE WITH GATE EQUIPMENT SUPPLIER TO PROVIDE AS PART OF THE SYSTEM AN ELECTRIC EYE SAFETY FOR GATE CONTROL (TYP. FOR ALL).
- 6 RUN A 1/2" CONDUIT AND PROVIDE A DEDICATED TELEPHONE LINE TO MEET INTERCOM DIAL-UP REQUIREMENTS FOR ACCESS GATE. COORDINATE WITH INTERCOM AND GATE SUPPLIERS ALL INSTALLATION REQUIREMENTS (TYP. FOR ALL).
- 7 RUN A 1" CONDUIT AND PROVIDE WEATHERPROOF J-BOX FOR MONUMENT AND FLAG POLE LIGHTING. CONNECT LIGHTS TO THE NEAREST BUILDING PHOTOCCELL AND HOUSE PANEL FOR POWER (TYP. FOR ALL).
- 8 RUN 2-1" CONDUIT TO EACH GATE FOR POWER AND CONTROLS. COORDINATE WITH GATE EQUIPMENT SUPPLIER ALL INSTALLATION REQUIREMENTS (TYP. FOR ALL).
- 9 PROVIDE PAD FOR TRANSFORMER. REQUEST AND COORDINATE ALL INSTALLATION REQUIREMENTS WITH UTILITY COMPANY. OBTAIN PAD DETAILS AND SPECIFICATIONS FROM LOCAL UTILITY COMPANY.
- 10 RUN A 1" CONDUIT AND PROVIDE WEATHERPROOF J-BOX FOR GFI RECEPTACLES AT FLAG POLE AND MONUMENT FOR SEASONAL LIGHTING. CONNECT TO THE CLUBHOUSE PANEL FOR POWER (TYP. FOR ALL).
- 11 REQUEST AND COORDINATE ALL INSTALLATION REQUIREMENTS FOR ELEVATOR POWER WITH LOCAL UTILITY COMPANY. RUN CONDUITS AND SIZE CONDUCTOR FOR VOLTAGE DROPS NOT TO EXCEED 2%.
- 12 PROVIDE SIDE OR TOP MOUNT FIXTURE FOR CARPORTS. PROVIDE ONE FIXTURE AT EACH END BAY FOR CARPORTS OF SIX OR MORE. CONNECT LIGHTS TO BUILDING PHOTOCCELL. USE BUILDING HOUSE PANEL FOR POWER. CONNECT LIGHTS REQUIRED IN EACH CARPORT TO THE BUILDINGS IN FRONT OF THE PARKING. FIXTURE SIZE ON PLAN IS ENLARGED, THIS IS NOT THE ACTUAL SIZE OF FIXTURE. MOUNT FIXTURE ON THE SIDE OR TOP OF THE CARPORT FACING THE CARS AS SHOWN ON DWG, NOT ON THE CEILING (TYP. FOR EACH CARPORT).
- 13 PROVIDE WEATHERPROOF J-BOX, LIGHT FIXTURE AND 20' POLE FOR SITE LIGHTING. CONNECT LIGHTS TO THE NEAREST BUILDING PHOTOCCELL AND HOUSE PANEL FOR POWER (TYP. FOR ALL).

- SYMBOLS:**
- T POWER COMPANY PAD-MOUNTED TRANSFORMER.
 - WT () WATERPROOF JUNCTION BOX (PVC OR GALVANIZED) MOUNTED FLUSH W/GRADE FOR SIGNS, SECURITY GATES, CARD ACCESS PEDESTALS, ETC. (WT IS WATER-TIGHT, WHERE INDICATED).
 - ▼ 250W. METAL HALIDE WALL PACK. MOUNT APPROXIMATELY 20' ABOVE FINISHED FLOOR. FIELD ADJUST.
 - ▽ 200W. METAL HALIDE WALL PACK. MOUNT APPROXIMATELY 20' ABOVE FINISHED FLOOR. FIELD ADJUST.
 - ⊕ 175W. METAL HALIDE "POST-TOP" ON 10' POLE MOUNTED ON REINFORCED CONCRETE BASE.
 - 15W. SIDE OR TOP MOUNT STRIP FLUORESCENT, ONE LAMP WITH WIREGUARD.

- SITE LIGHTING GENERAL NOTES:**
- A. ALL CONDUCTORS 60°C COPPER, TYPE THWN UNLESS INDICATED OTHER WISE.
 - B. ALL CONDUIT PIC SCHEDULE 40 EXCEPT AS FOLLOWS:
 - 1). EXPOSED ABOVE GRADE: RIGID, GALV. STEEL (RGS).
 - 2). TRANSITION BETWEEN EXPOSED ABOVE GRADE & DIRECT BURIED: RGS.
 - 3). BELOW PAVED DRIVING SURFACES (BACK OF CURB TO BACK OF CURB):
 - A) WITH CONCRETE ENCASEMENT AT MINIMUM DEPTH PER NEC: SCHEDULE 40 PVC.
 - B) WITHOUT CONCRETE ENCASEMENT, MINIMUM DEPTH PER NEC: RGS WITH CORROSION - RESISTANT COATING.
 - C) WITHOUT CONCRETE ENCASEMENT, DEPTH 3 FEET OR MORE: SCHEDULE 80 PVC.
 - C. ALL POLE & BOLLARD LIGHTING IS CIRCUITED AT 240V, SINGLE PHASE.
 - D. ALL BUILDING SIGN LIGHTING IS CIRCUITED AT 120V, SINGLE PHASE.
 - E. ALL GROUND-MOUNTED, ACCENT LIGHTING IS CIRCUITED AT 120V, SINGLE PHASE.
 - F. PROVIDE COPPER GROUND CONDUCTOR WITH ALL UNDERGROUND BRANCH CIRCUITS.
 - G. PROVIDE 2-6" WIDE METALLIC DETECTION TAPE FOR ALL BURIED CONDUITS.



1 SITE PLAN - ELECTRICAL
 SCALE: 1"=50'-0"

EVERGREEN AT ROCKWALL

ELECTRICAL SITE PLAN

Scale:	AS SHOWN
Designed by:	RHA
Drawn by:	RHA
Checked by:	RHA
Date:	SEPTEMBER 2006
Project No.:	063890013

SHEET
 C42