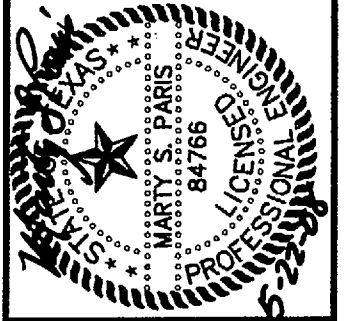


MATCHLINE STA 34+50

1	01/03/07	ALIGNMENT AND PROFILE REVISION STA. 16+84 TO STA. 25+15.76	C-35-37
2	01/03/07	REVISED PLAN STA. FOR AIR RELEASE VALVE	C-33, C-35
3	04/05/07	ALIGNMENT AND PROFILE REVISION STA. 36+36 TO STA. 37+79.87	C-39
No.	Date	Revisions	App.

Kimley-Horn and Associates, Inc.
 Tel. No. (972) 770-1300
 Fax No. (972) 235-8820
 12700 Park Central Drive, Suite 1800
 Dallas, Texas 75251

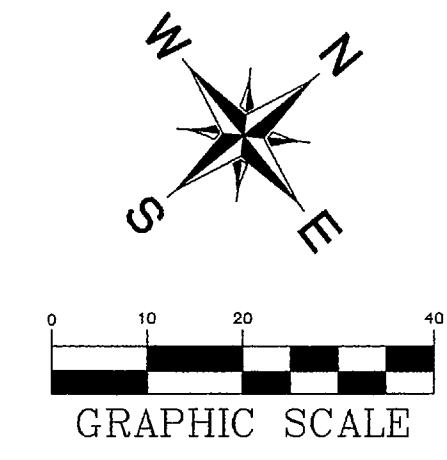


EVERGREEN AT ROCKWALL

OFFSITE FORCE MAIN PLAN & PROFILE

Scale: AS SHOWN
 Designed by: KHA
 Drawn by: KHA
 Checked by: KHA
 Date: MAY 2008
 Project No. 063989013

SHEET
C-39



LEGEND	
SYM.	DESCRIPTION
— W —	EXISTING WATER LINE
— SS —	EXISTING SS LINE
- - -	R.O.W. LINE
— GAS —	EXISTING UNDERGROUND GAS
— UGT —	EXISTING UNDERGROUND TELEPHONE
====	EXISTING STORM SEWER
- - - - -	PROPOSED EASEMENT
	ABANDONED WATER LINE
- - - - -	SIDEWALK

BENCHMARKS:

"□" CUT IN THE EAST END OF HEAD-WALL LOCATED ON THE NORTHWEST CORNER OF THE INTERSECTION OF BOYDSTUN STREET AND CLARK STREET. ELEVATION 534.21

"□" CUT IN THE SOUTHWEST CORNER OF THE HEADWALL LOCATED ON THE WEST SIDE OF INDUSTRIAL BLVD., APPROXIMATELY 250± FEET NORTH OF THE INTERSECTION OF INDUSTRIAL AND THE I-30 ACCESS ROAD. ELEVATION 544.77

STOP!
CALL BEFORE YOU DIG
DIG TESS
1-800-DIG-TESS
 (@ least 72 hours prior to digging)

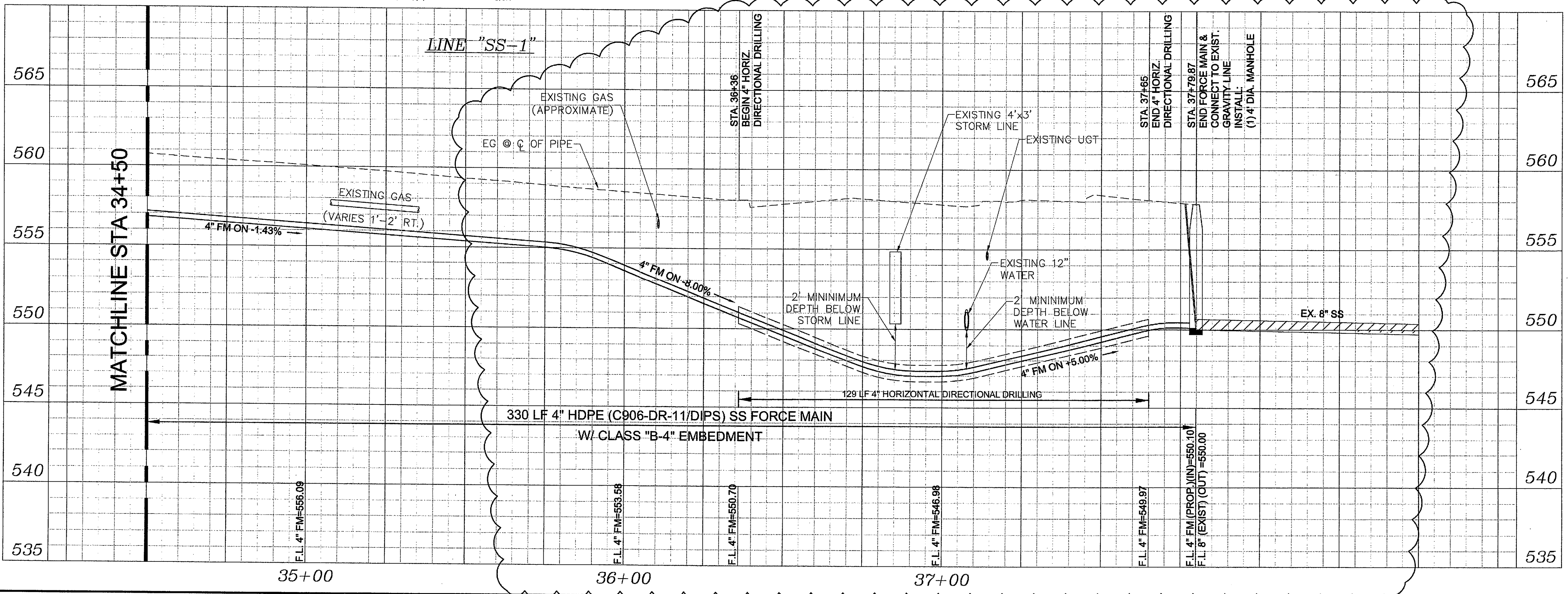
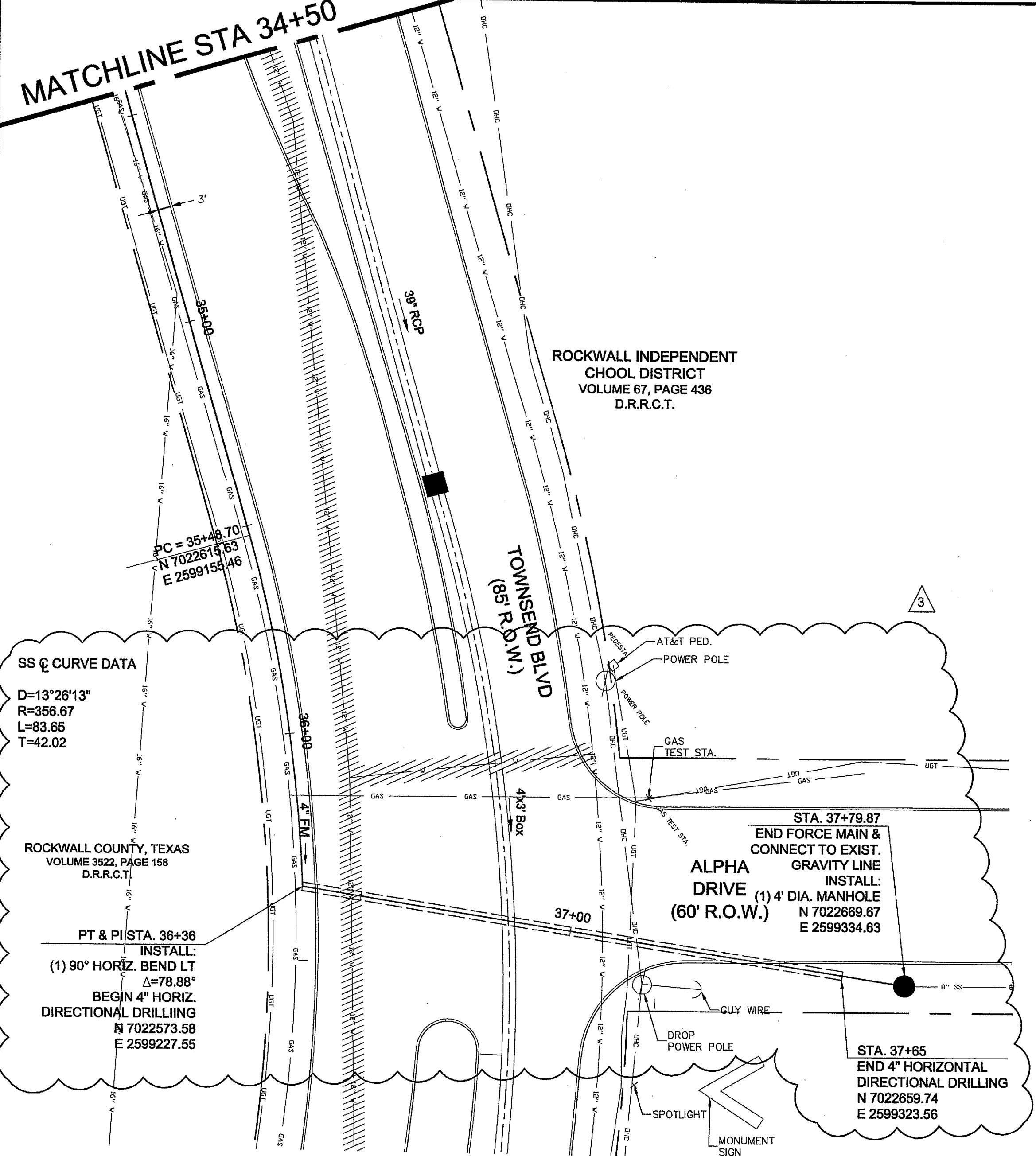
CAUTION! OVERHEAD ELECTRIC IN THIS AREA

CAUTION! GAS IN THIS AREA

CAUTION! UNDERGROUND TELEPHONE IN THIS AREA

CONSTRUCT 4" HDPE (C906-DR11/DIPS) SS FORCE MAIN

NOTES:
 1. MINIMUM 3' COVER ON SS LINES



RECORD DRAWING
 THIS RECORD DRAWING HEREIN REFLECTS TO THE BEST OF THE DESIGN ENGINEER'S KNOWLEDGE THE APPROXIMATE LOCATION OF THE CONSTRUCTED WORK USING INFORMATION AS PROVIDED BY THE CONTRACTORS AND SURVEYED GRADES.

Scale: AS SHOWN
 Designed by: KHA
 Drawn by: KHA
 Checked by: KHA
 Date: MAY 2008
 Project No. 063989013
 File: C:\WORK\ADMIN\A\Projects\11\Station and Office SS\Station\SS-39_Plan & Profile.dwg
 Plot: 05/22/2008 10:52:32
 Imp: 0