

1	01/03/07	ALIGNMENT AND PROFILE REVISION STA. 16+84 TO STA. 25+15.76	C-35-37
2	01/03/07	REVISED PLAN STA. FOR AIR RELEASE VALVE	C-33, C-35
No.	Date	Revisions	App.

Kimley-Horn and Associates, Inc.
 12700 Park Central Drive, Suite 1800
 Dallas, Texas 75251
 Tel. No. (972) 770-1300
 Fax No. (972) 238-3920



EVERGREEN AT ROCKWALL

OFFSITE FORCE MAIN PLAN & PROFILE

Scale: AS SHOWN
 Designed by: KHA
 Drawn by: KHA
 Checked by: KHA
 Date: MAY 2008
 Project No. 063890013

SHEET
C-33

LEGEND	
SYM.	DESCRIPTION
W	EXISTING WATER LINE
SS	EXISTING SS LINE
- - -	R.O.W. LINE
GAS	EXISTING UNDERGROUND GAS
UGT	EXISTING UNDERGROUND TELEPHONE
---	EXISTING STORM SEWER
- - -	PROPOSED EASEMENT
	ABANDONED WATER LINE
- - -	SIDEWALK

BENCHMARKS:

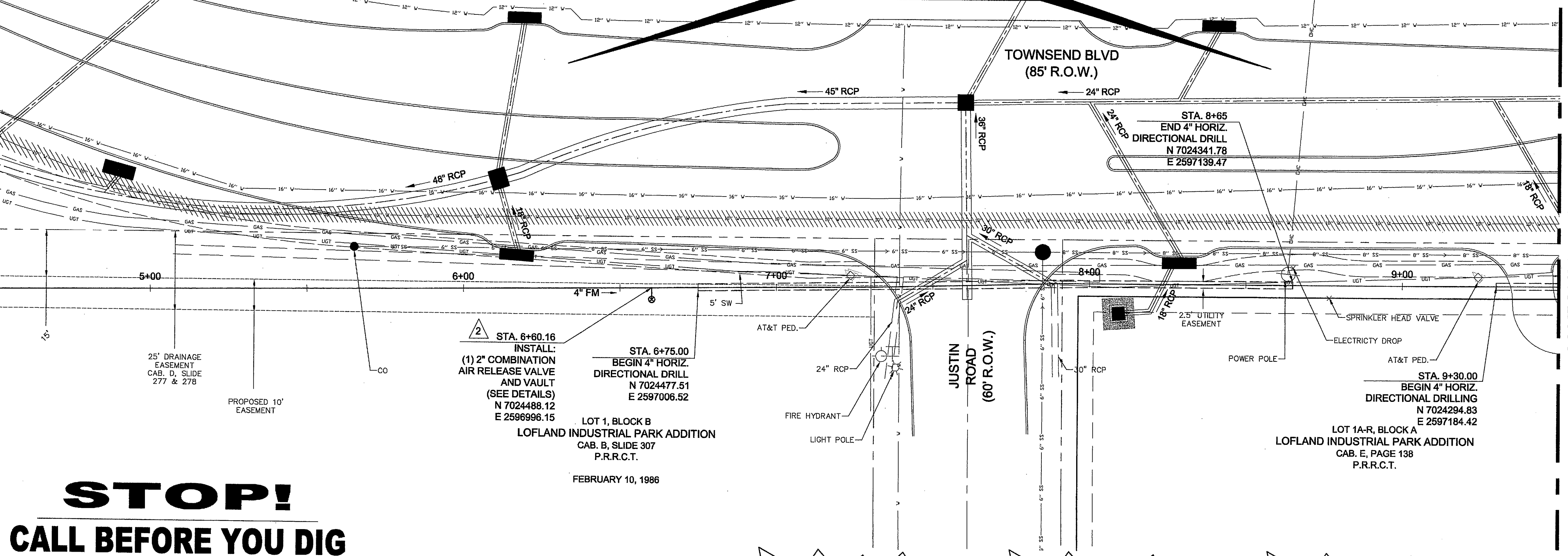
"□" CUT IN THE EAST END OF HEAD-WALL LOCATED ON THE NORTHWEST CORNER OF THE INTERSECTION OF BOYDSTUN STREET AND CLARK STREET. ELEVATION 534.21

"□" CUT IN THE SOUTHWEST CORNER OF THE HEADWALL LOCATED ON THE WEST SIDE OF INDUSTRIAL BLVD, APPROXIMATELY 250± FEET NORTH OF THE INTERSECTION OF INDUSTRIAL AND THE I-30 ACCESS ROAD. ELEVATION 544.77

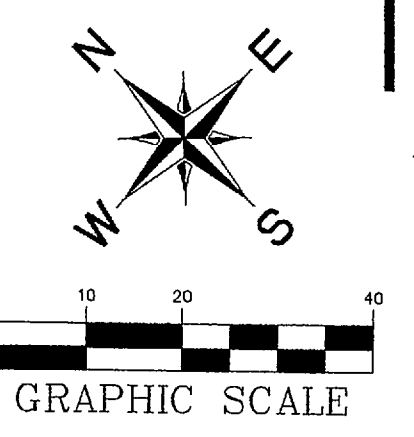
CONSTRUCT 4" HDPE (C906-DR11/DIPS) SS FORCE MAIN

MATCHLINE STA 4+50

MATCHLINE STA 9+50



STOP!
CALL BEFORE YOU DIG
DIG TESS
1-800-DIG-TESS
 (@ least 72 hours prior to digging)

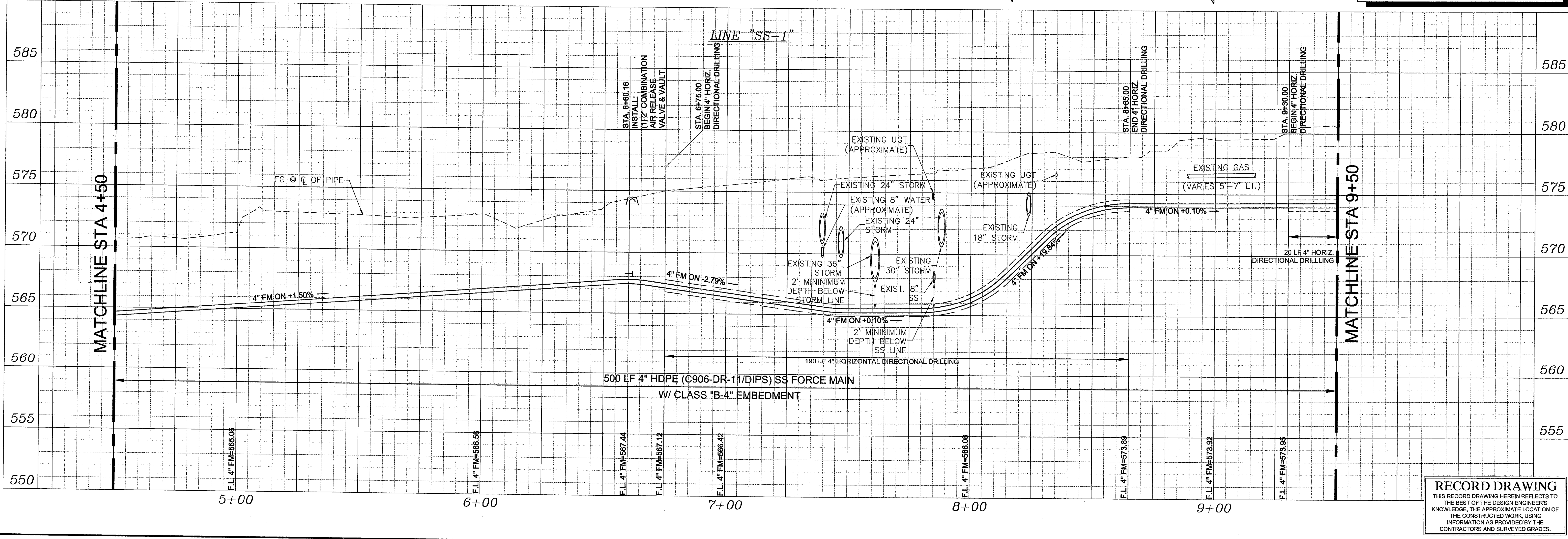


NOTES:
 1. MINIMUM 3' COVER ON SS LINES

CAUTION! UNDERGROUND TELEPHONE IN THIS AREA

CAUTION! OVERHEAD ELECTRIC IN THIS AREA

CAUTION! GAS IN THIS AREA



RECORD DRAWING
 THIS RECORD DRAWING HEREIN REFLECTS TO THE BEST OF THE DESIGN ENGINEERS KNOWLEDGE, THE APPROXIMATE LOCATION OF THE CONSTRUCTED WORK, USING INFORMATION AS PROVIDED BY THE CONTRACTORS AND SURVEYED GRADES.

Small text at the bottom right corner containing project details and contact information.