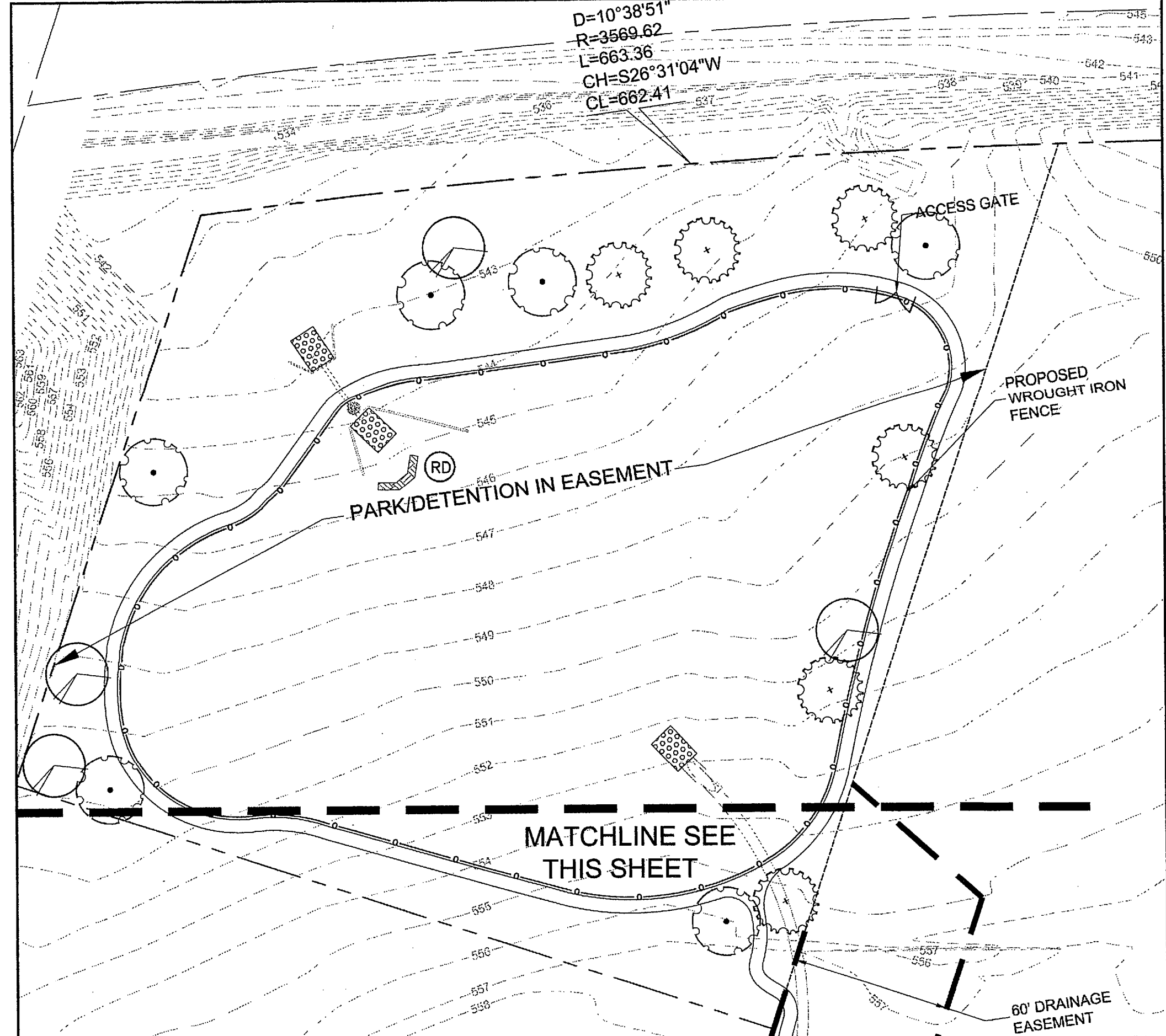
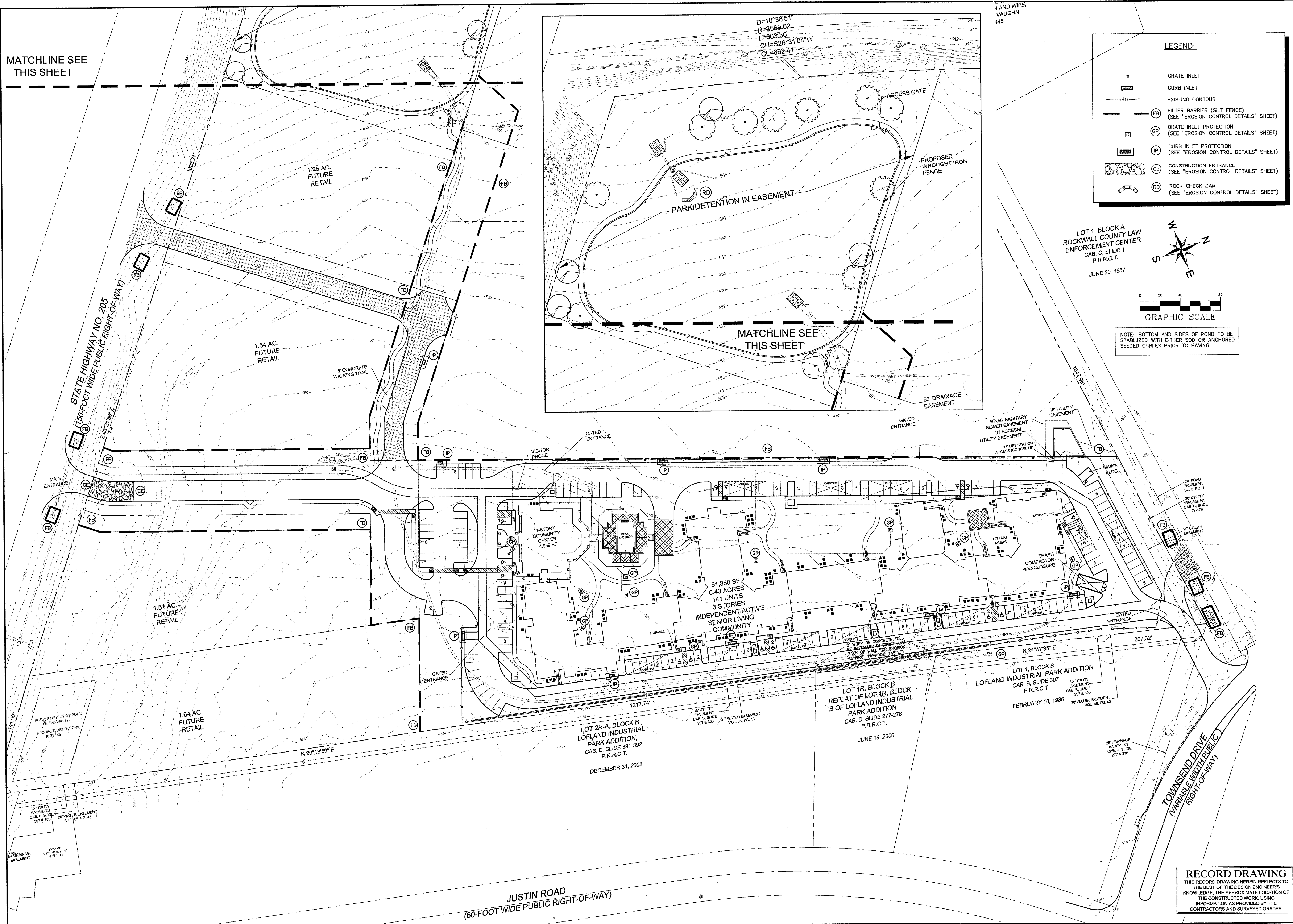
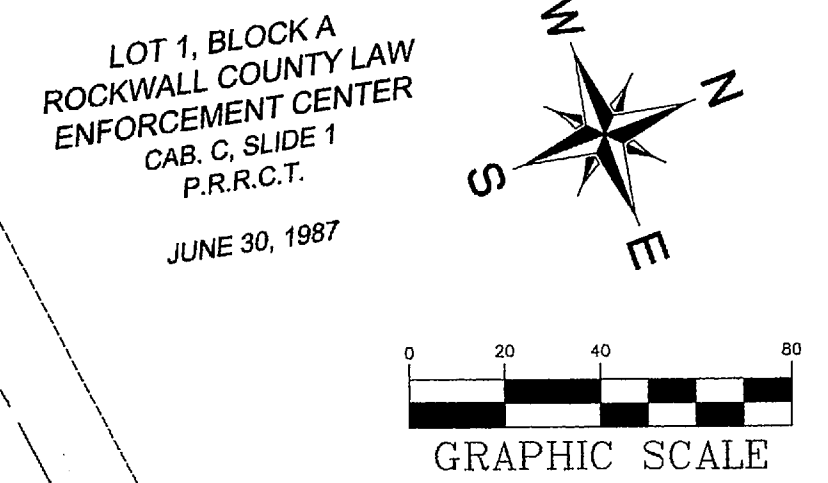


MATCHLINE SEE THIS SHEET



LEGEND:

	GRATE INLET
	CURB INLET
	EXISTING CONTOUR
	FILTER BARRIER (SILT FENCE) (SEE "EROSION CONTROL DETAILS" SHEET)
	GRATE INLET PROTECTION (SEE "EROSION CONTROL DETAILS" SHEET)
	CURB INLET PROTECTION (SEE "EROSION CONTROL DETAILS" SHEET)
	CONSTRUCTION ENTRANCE (SEE "EROSION CONTROL DETAILS" SHEET)
	ROCK CHECK DAM (SEE "EROSION CONTROL DETAILS" SHEET)



LOT 1, BLOCK A
ROCKWALL COUNTY LAW
ENFORCEMENT CENTER
CAB. C, SLIDE 1
P.R.R.C.T.
JUNE 30, 1987

NOTE: BOTTOM AND SIDES OF POND TO BE STABILIZED WITH EITHER SOD OR ANCHORED SEEDED CURLEX PRIOR TO PAVING.

**Kimley-Horn
and Associates, Inc.**
12700 Park Central Drive, Suite 1800
Dallas, Texas 75244
Tel. No. (972) 230-9800
Fax No. (972) 230-9820

**EVERGREEN
AT ROCKWALL**

**EROSION CONTROL
PLAN**

Scale:	AS SHOWN
Designed by:	KHA
Drawn by:	KHA
Checked by:	KHA
Date:	DECEMBER 2006
Project No.:	063898013

RECORD DRAWING
THIS RECORD DRAWING HEREIN REFLECTS TO THE BEST OF THE DESIGN ENGINEER'S KNOWLEDGE, THE APPROXIMATE LOCATION OF THE CONSTRUCTED WORK, USING INFORMATION AS PROVIDED BY THE CONTRACTORS AND SURVEYED GRADES.