

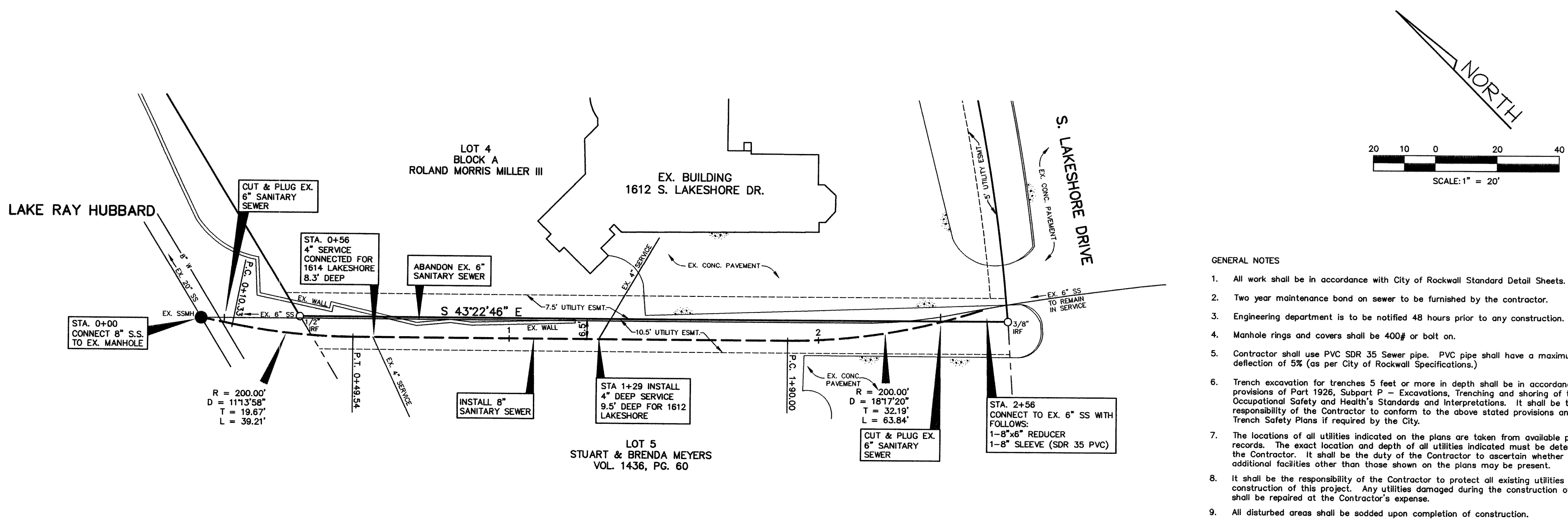
SANITARY SEWER RELOCATION

THE ESTATES OF COAST ROYALE NO. 2
 CITY OF ROCKWALL, TEXAS

RECORD DRAWING

No.	Date	Revision

Scale: 1"=20'
 File Name: SRSITERD
 Date: MAY 2006
 Project No.: 26124



RECORD DRAWING

IMPROVEMENTS INDICATED ON THIS PLAN WHERE MADE IN ACCORDANCE WITH THE PROJECT PLANS & SPECIFICATIONS. THE DESIGN ENGINEER IS NOT AWARE OF ANY CHANGES TO THESE PLANS OTHER THAN THOSE PROVIDED ON A CONTRACTOR SET OF MARKUPS.

DATE: JANUARY 03, 2007

NOTE: BOUNDARY AND TOPOGRAPHIC INFORMATION WAS SUPPLIED BY OWNER AND SURVEYS PERFORMED BY OTHERS. DESIGN ENGINEER IS NOT RESPONSIBLE FOR DISCREPANCIES RESULTING BETWEEN ACTUAL SITE CONDITIONS AND TOPOGRAPHIC INFORMATION INDICATED. DESIGN ENGINEER SHOULD BE NOTIFIED IMMEDIATELY IF DISCREPANCIES ARE FOUND.

Station	Prop. 8" S.S. Elev.	Ex. 6" S.S. Elev.	Notes
0+00	432.80	430.85±	STA. 0+00 CONNECT 8" S.S. TO EX. MANHOLE
0+56	432.80	430.85±	STA. 0+56 CONNECT EX. 4" SERVICE
1+29	437.80	437.80	STA. 1+29 INSTALL 4" SERVICE
2+56	443.00	443.00	STA. 2+56 INSTALL 8" 46" REDUCER 1-8" SLEEVE

G:\2006\26124\rsiterd.dwg Mod Jan 03 11:38:41 2007