

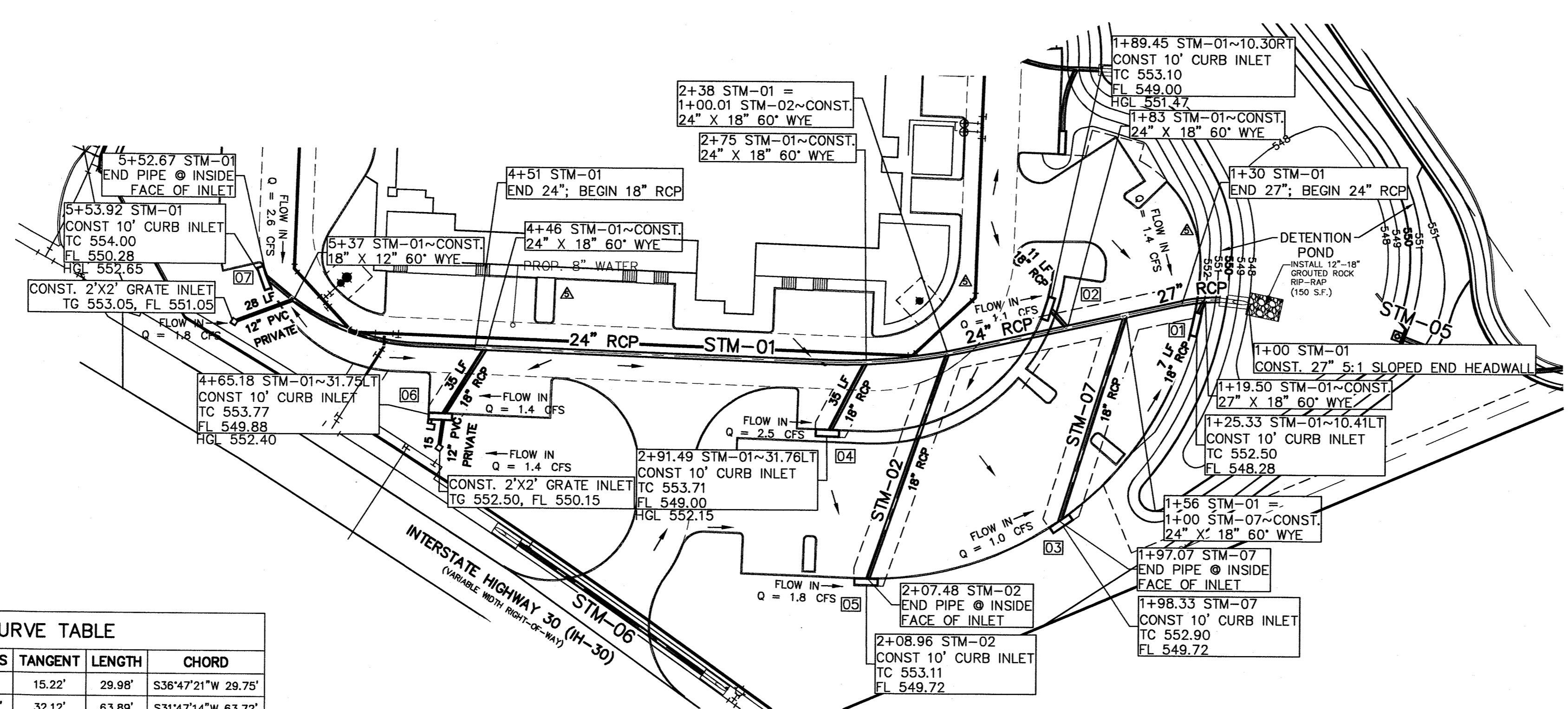
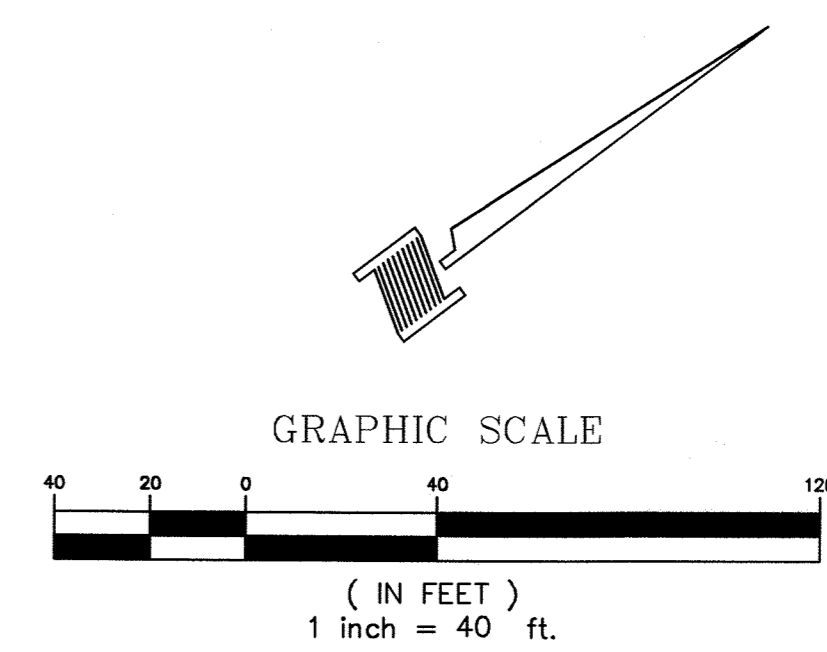
*Brent L. Murphree*  
1-20-14

MEP Engineering  
**Telios Corporation**  
12946 Dairy Ashford, Suite 130 Sugar Land, Texas 77478

Structural Engineering  
**ASA Dally Structural Engineers**  
9800 Richmond Ave., Suite 460 Houston, Texas 77042

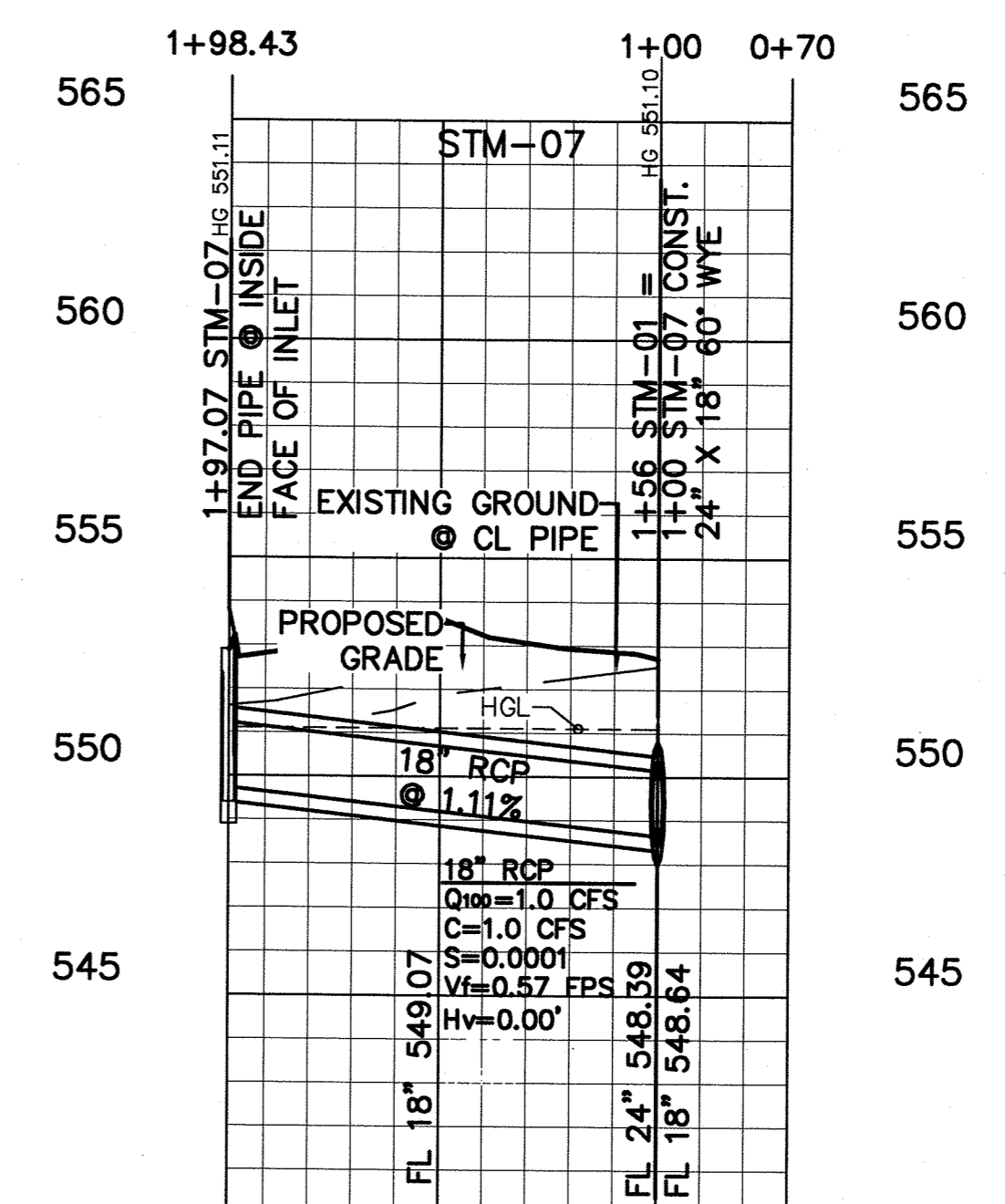
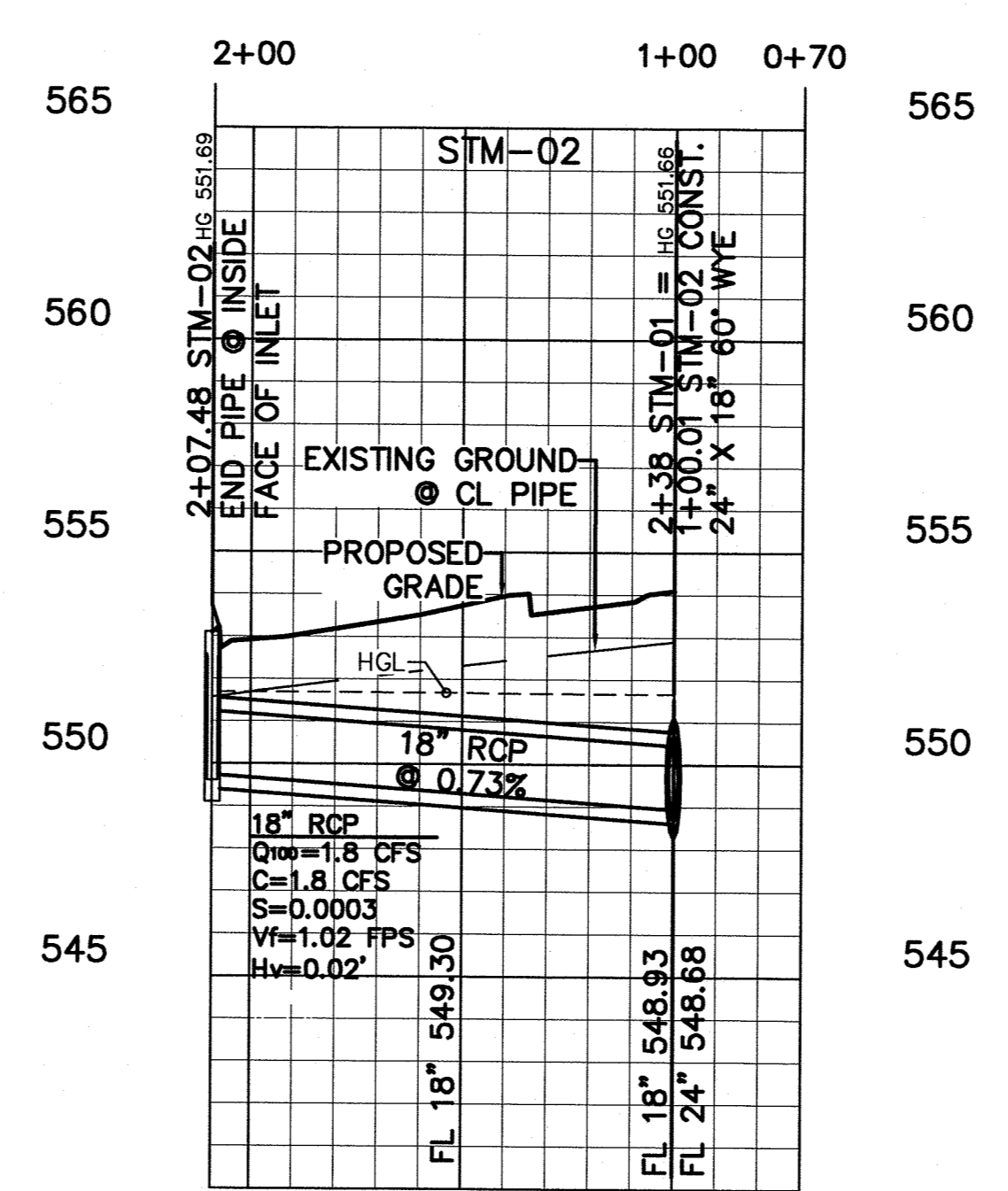
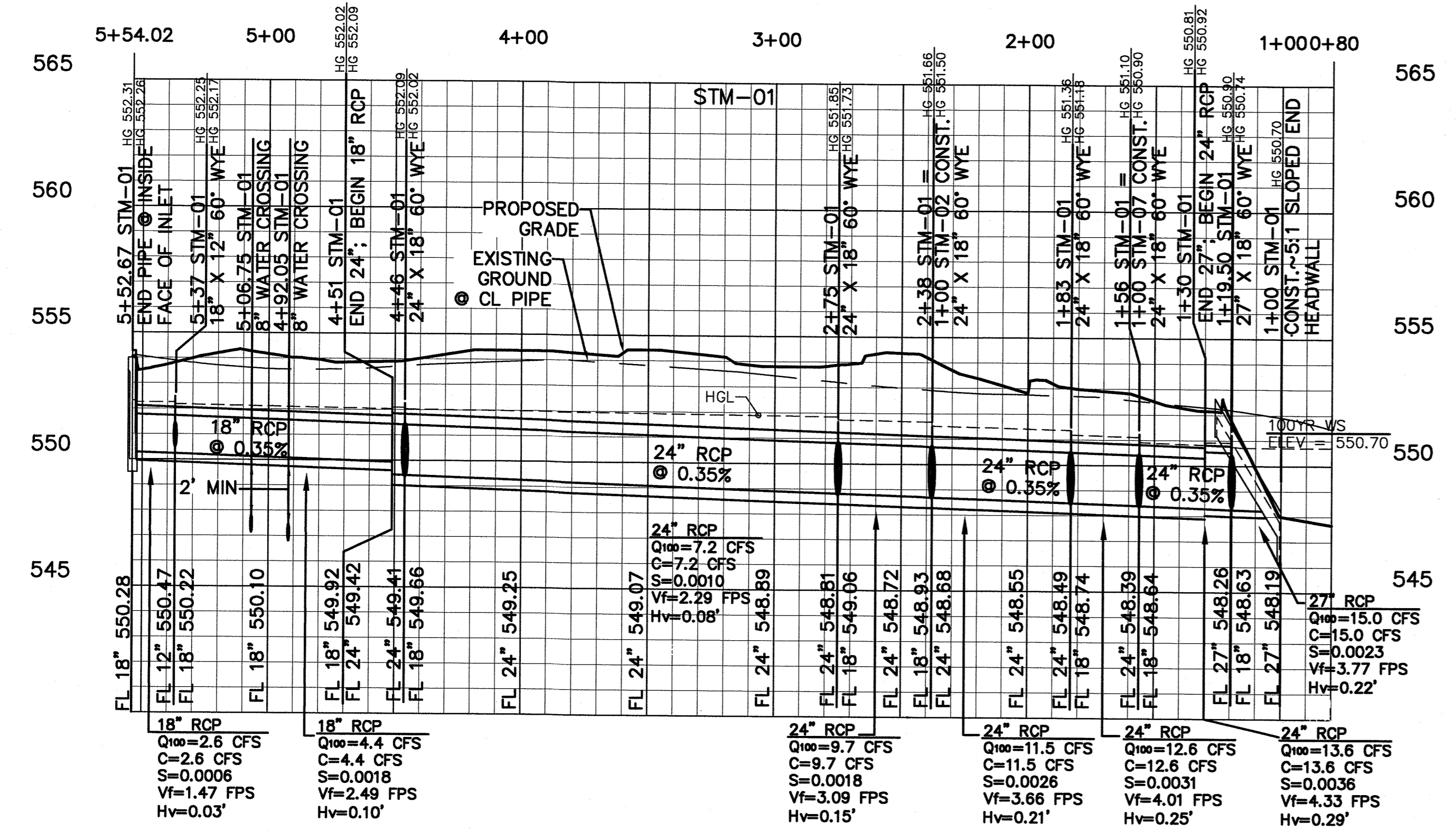
Landscape Architect  
**Studio 13 Design Group**  
519 Bennett Lane, Suite 203 Lewisville, TX 75057

Civil Engineering  
**DOWDEY, ANDERSON & ASSOCIATES, INC.**  
5225 Village Creek Drive, Suite 200 Plano, Texas 75093  
Phone 972.931.0694 Fax 972.931.9538  
STATE REGISTRATION NUMBER: F-399



CURVE TABLE				
CURVE	DELTA	RADIUS	TANGENT	CHORD
C1	24°32'18"	70.00'	15.22'	29.98'
C2	14°32'01"	251.88'	32.12'	63.89'
C3	38°17'33"	100.00'	34.72'	66.83'

NOTE: PRIVATE STORM TO BE MAINTAINED BY PROPERTY OWNER.



**BENCHMARKS:**  
CITY OF ROCKWALL MONUMENT R003: BRASS DISK IN CONCRETE SOUTH OF STATE HIGHWAY NO. 66 AND NORTH OF J.W. WILLIAMS MIDDLE SCHOOL, APPROXIMATELY 21' WEST OF A CORNER BACK OF CURB AND APPROXIMATELY 53.5' SOUTHWEST OF AN 8D NAIL WITH SHINER IN POWER POLE. ELEVATION = 529.23' (FIELD) HOLD\* 529.23' (RECORD)  
CITY OF ROCKWALL MONUMENT R005: BRASS DISK IN CONCRETE IN GRASS MEDIAN AT INTERSECTION OF FARM TO MARKET ROAD NO. 740 (RIDGE ROAD) AND SUMMIT RIDGE DRIVE, APPROXIMATELY 14' NORTHWEST OF A FIRE HYDRANT AND APPROXIMATELY 10' WEST OF A STREET SIGN. ELEVATION = 578.71'(RECORD) 578.63' (FIELD)

No.	Date	Description
1	8/28/2012	ISSUED FOR REVIEW
2	10/31/2012	ISSUED FOR REVIEW
3	11/13/2012	ISSUED FOR REVIEW
4	11/16/2012	ISSUED FOR REVIEW
5	01/30/2013	PR. 01
6	01/20/2014	RECORD DRAWINGS

**Emerus Emergency Hospital - Rockwall**



Interstate Highway 30 and T.L. Townsend Drive  
Rockwall, TX 75087

**STM-01, STM-02 & STM-07 Storm Sewer Plan & Profiles**

**RECORD DRAWINGS** JANUARY 20, 2014  
NOTE: THE INTENT OF THE OWNER AND ENGINEER WAS TO CONSTRUCT THE IMPROVEMENTS ACCORDING TO THESE PLANS AS APPROVED BY THE CITY OF ROCKWALL. THE LINES AND GRADES WERE SET ON THE GROUND FOR CONSTRUCTION ACCORDING TO SAID PLANS. WE ARE NOT AWARE OF ANY CHANGES OR REVISIONS TO THESE PLANS DURING CONSTRUCTION EXCEPT AS NOTED ON THE PLANS.

Copyright © 2014 by Philo Wilke Associates, Inc. All rights reserved.  
This document and the information herein is the property of Philo Wilke Associates, Inc. No part hereof may be reproduced, stored in a retrieval system, or transmitted in any form or by any means, electronic, mechanical, photocopying, recording, or by any information storage and retrieval system, without the prior written consent of Philo Wilke Associates, Inc.