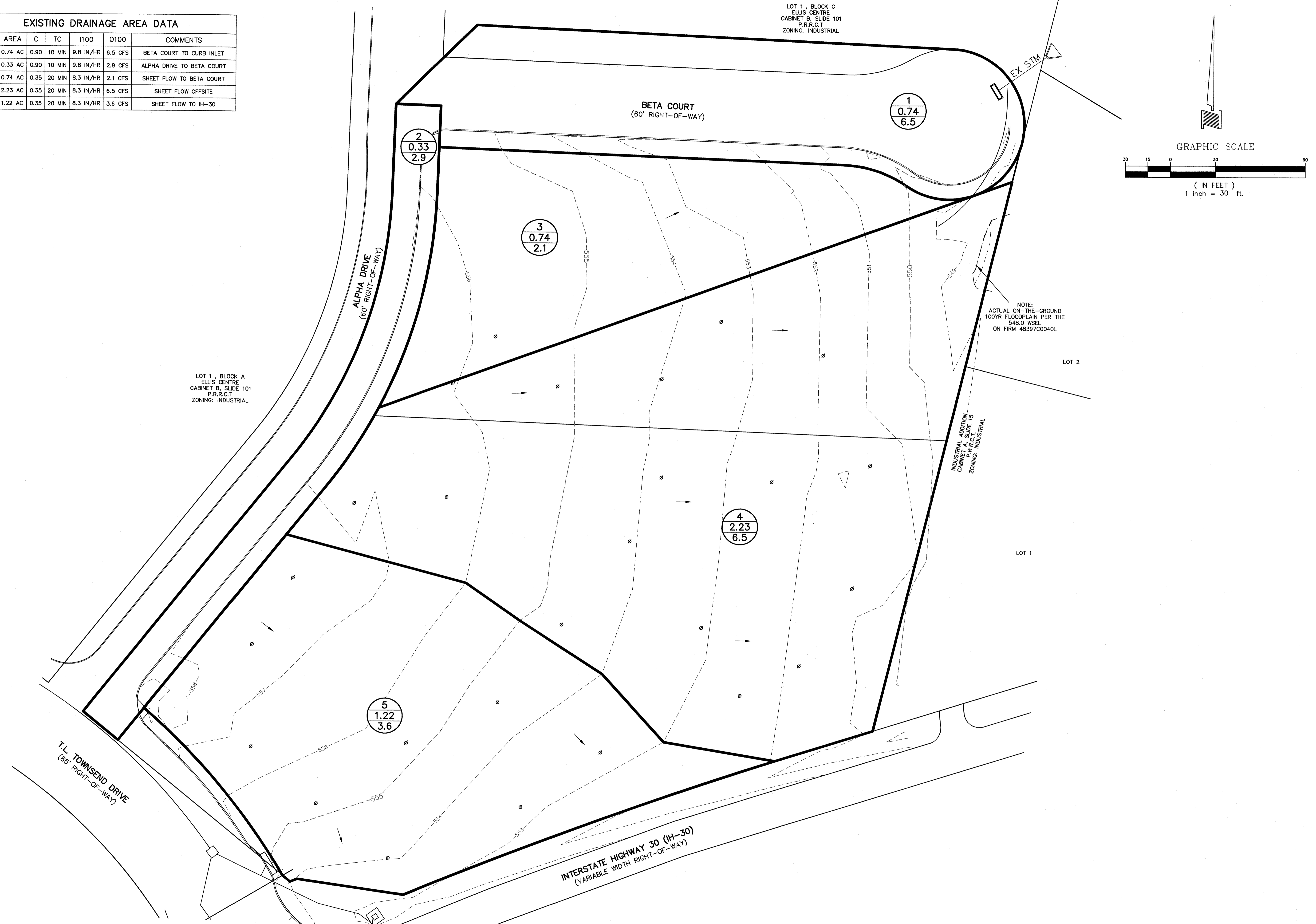


EXISTING DRAINAGE AREA DATA						
AREA #	AREA	C	TC	I100	Q100	COMMENTS
1	0.74 AC	0.90	10 MIN	9.8 IN/HR	6.5 CFS	BETA COURT TO CURB INLET
2	0.33 AC	0.90	10 MIN	9.8 IN/HR	2.9 CFS	ALPHA DRIVE TO BETA COURT
3	0.74 AC	0.35	20 MIN	8.3 IN/HR	2.1 CFS	SHEET FLOW TO BETA COURT
4	2.23 AC	0.35	20 MIN	8.3 IN/HR	6.5 CFS	SHEET FLOW OFFSITE
5	1.22 AC	0.35	20 MIN	8.3 IN/HR	3.6 CFS	SHEET FLOW TO IH-30

LOT 1, BLOCK C
ELLIS CENTRE
CABINET B, SLIDE 101
P.R.R.C.T.
ZONING: INDUSTRIAL

LOT 1, BLOCK A
ELLIS CENTRE
CABINET B, SLIDE 101
P.R.R.C.T.
ZONING: INDUSTRIAL

INDUSTRIAL ADDITION
CABINET A, P.R.R.C.T.
ZONING: INDUSTRIAL



NOTE:
ACTUAL ON-THE-GROUND
100YR FLOODPLAIN PER THE
548.0 WSEL
ON FIRM 483970040L

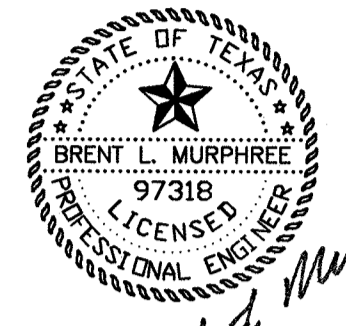
BENCHMARKS:

CITY OF ROCKWALL MONUMENT R003: BRASS DISK IN CONCRETE SOUTH OF STATE HIGHWAY NO. 66 AND NORTH OF J.W. WILLIAMS MIDDLE SCHOOL, APPROXIMATELY 21' WEST OF A CORNER BACK OF CURB AND APPROXIMATELY 53.5' SOUTHWEST OF AN 8D NAIL WITH SHINER IN POWER POLE.
ELEVATION = 529.23' (FIELD) HOLD* 529.23' (RECORD)

CITY OF ROCKWALL MONUMENT R005: BRASS DISK IN CONCRETE IN GRASS MEDIAN AT INTERSECTION OF FARM TO MARKET ROAD NO. 740 (RIDGE ROAD) AND SUMMIT RIDGE DRIVE, APPROXIMATELY 14' NORTHWEST OF A FIRE HYDRANT AND APPROXIMATELY 10' WEST OF A STREET SIGN.
ELEVATION = 578.71'(RECORD) 578.63' (FIELD)

RECORD DRAWINGS **JANUARY 20, 2014**

NOTE: THE INTENT OF THE OWNER AND ENGINEER WAS TO CONSTRUCT THE IMPROVEMENTS ACCORDING TO THESE PLANS AS APPROVED BY THE CITY OF ROCKWALL. THE LINES AND GRADES WERE SET ON THE GROUND FOR CONSTRUCTION ACCORDING TO SAID PLANS. WE ARE NOT AWARE OF ANY CHANGES OR REVISIONS TO THESE PLANS DURING CONSTRUCTION EXCEPT AS NOTED ON THE PLANS.



Brent L. Murphree
1-20-14

- MEP Engineering
Telios Corporation
12946 Dairy Ashford, Suite 130 Sugar Land, Texas 77478
- Structural Engineering
ASA Dally Structural Engineers
9800 Richmond Ave., Suite 460 Houston, Texas 77042
- Landscape Architect
Studio 13 Design Group
519 Bennett Lane, Suite 203 Lewisville, TX 75057
- Civil Engineering
DOWDEY, ANDERSON & ASSOCIATES, INC.
5225 Village Creek Drive, Suite 200 Plano, Texas 75093
Phone 972.931.0604 Fax 972.931.0538
STATE REGISTRATION NUMBER: F-399

No.	Date	Description
1	10/31/2012	ISSUED FOR REVIEW
2	11/13/2012	ISSUED FOR REVIEW
3	11/16/2012	ISSUED FOR REVIEW
4	01/20/2013	PR. 01
5	01/20/2014	RECORD DRAWINGS

Emerus Emergency Hospital - Rockwall



Interstate Highway 30 and T.L. Townsend Drive
Rockwall, TX 75087

Existing Drainage Area Map