

Brent L. Murphree
1-20-14

- MEP Engineering
Telios Corporation
12946 Dairy Ashford, Suite 130 Sugar Land, Texas 77478
- Structural Engineering
ASA Dally Structural Engineers
9800 Richmond Ave., Suite 460 Houston, Texas 77042
- Landscape Architect
Studio 13 Design Group
519 Bennett Lane, Suite 203 Lewisville, TX 75057
- DOWDEY, ANDERSON & ASSOCIATES, INC.**
5225 Village Creek Drive, Suite 200 Plano, Texas 75093
Phone 972-931-0694 Fax 972-931-6538
STATE REGISTRATION NUMBER: F-399

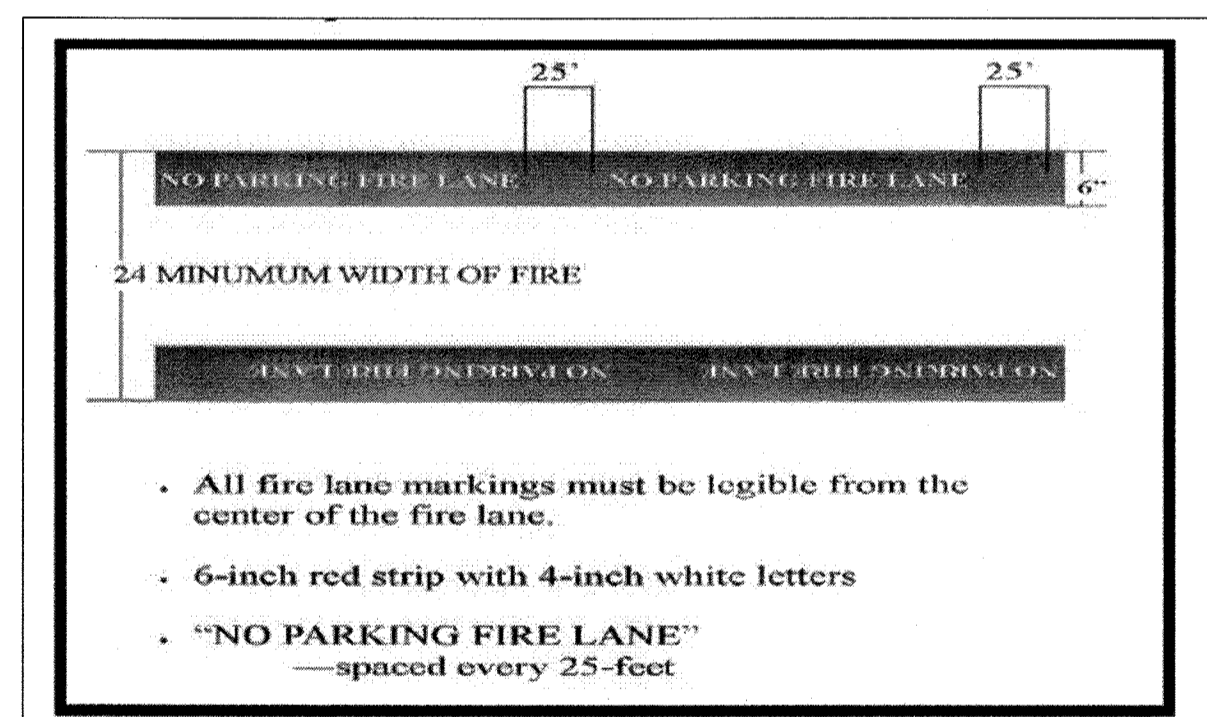
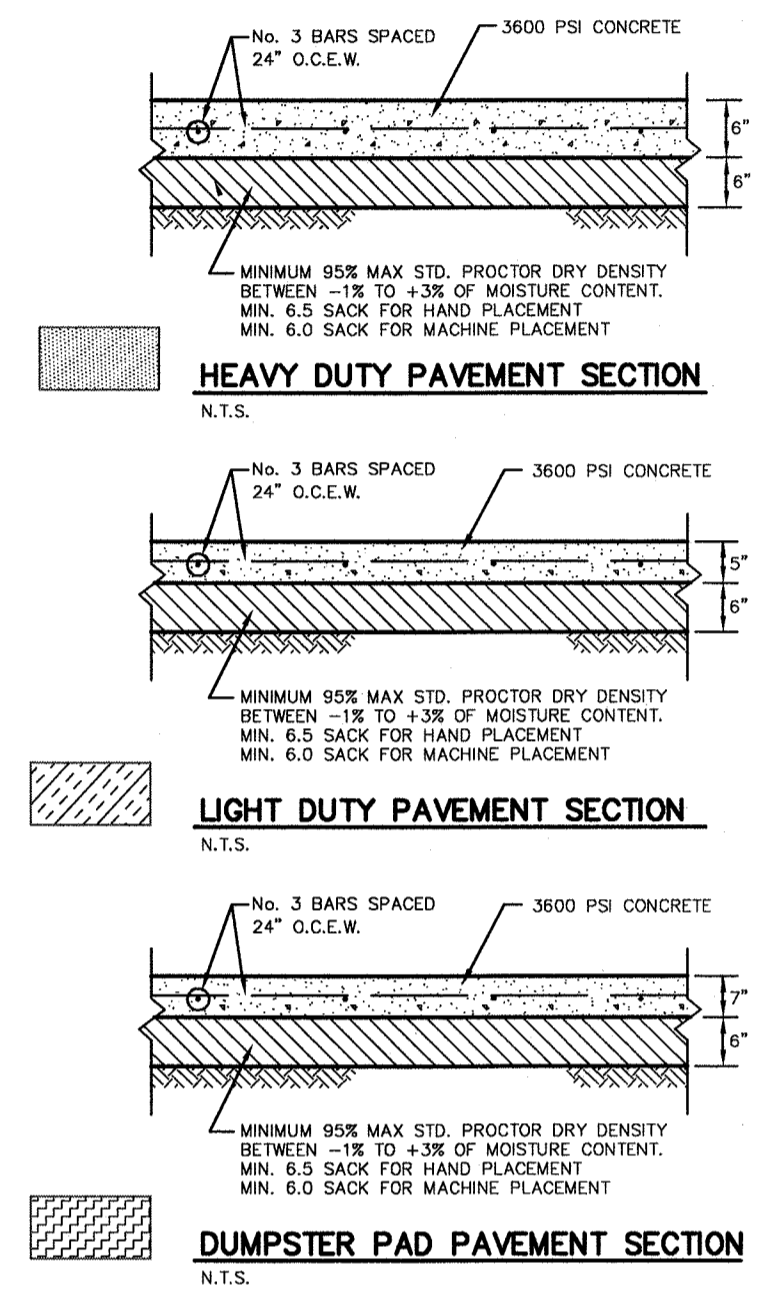
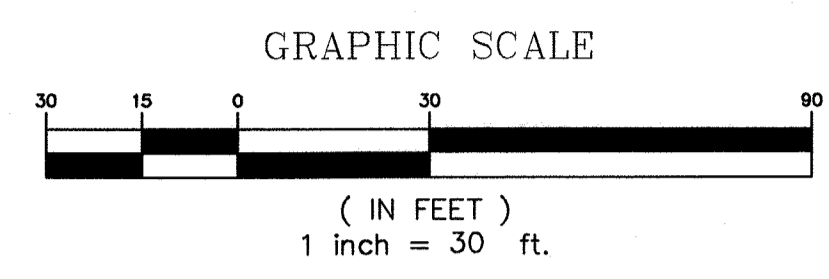
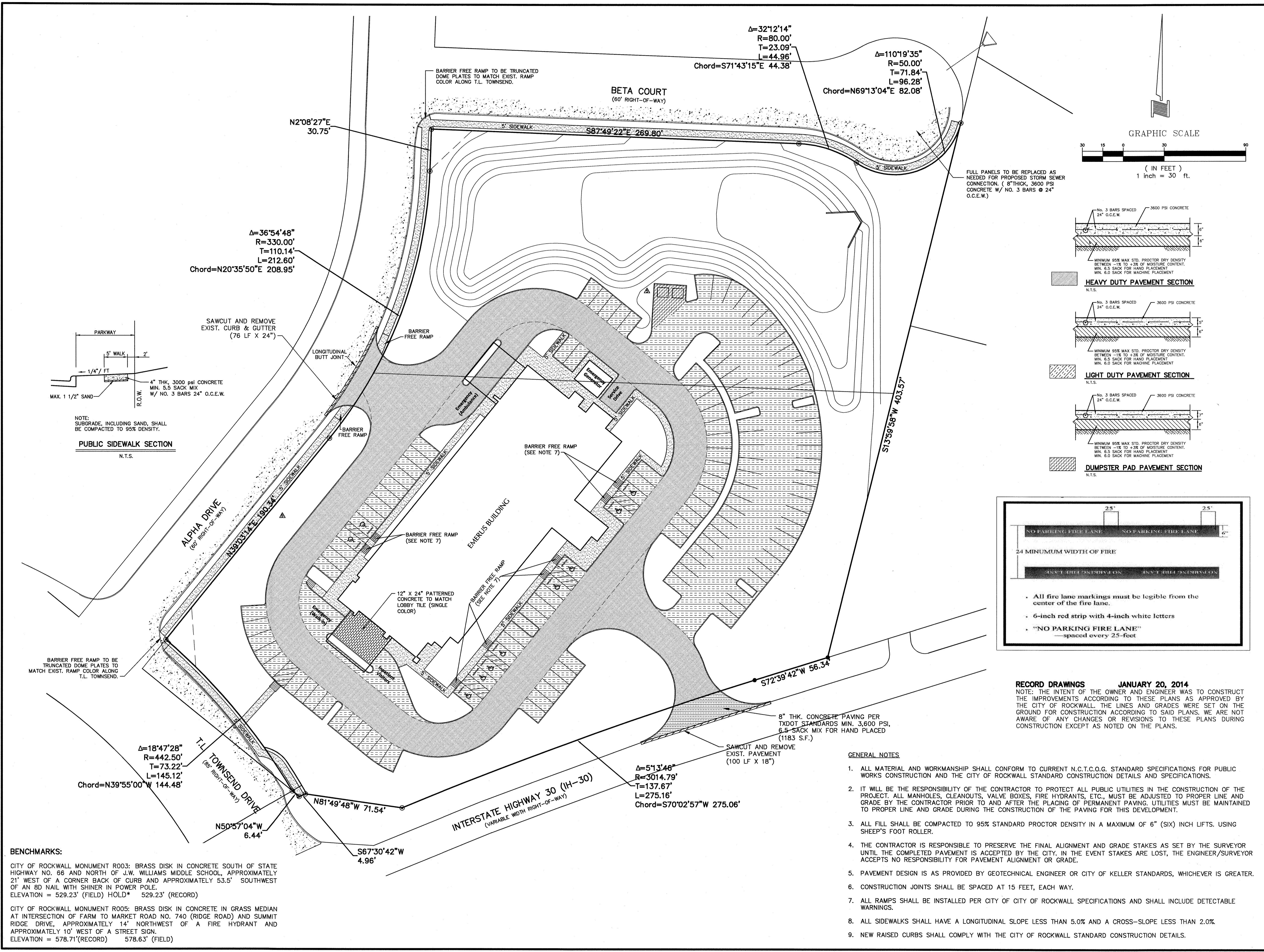
No.	Date	Description
1	9/28/2012	ISSUED FOR REVIEW
2	10/31/2012	ISSUED FOR REVIEW
3	11/13/2012	ISSUED FOR REVIEW
4	11/16/2012	ISSUED FOR REVIEW
5	01/30/2013	PR. CL.
6	01/20/2014	RECORD DRAWINGS

Emerus Emergency Hospital - Rockwall



Interstate Highway 30 and T.L. Townsend Drive
Rockwall, TX 75087

Paving Plan



RECORD DRAWINGS JANUARY 20, 2014
NOTE: THE INTENT OF THE OWNER AND ENGINEER WAS TO CONSTRUCT THE IMPROVEMENTS ACCORDING TO THESE PLANS AS APPROVED BY THE CITY OF ROCKWALL. THE LINES AND GRADES WERE SET ON THE GROUND FOR CONSTRUCTION ACCORDING TO SAID PLANS. WE ARE NOT AWARE OF ANY CHANGES OR REVISIONS TO THESE PLANS DURING CONSTRUCTION EXCEPT AS NOTED ON THE PLANS.

- GENERAL NOTES**
- ALL MATERIAL AND WORKMANSHIP SHALL CONFORM TO CURRENT N.C.T.C.O.G. STANDARD SPECIFICATIONS FOR PUBLIC WORKS CONSTRUCTION AND THE CITY OF ROCKWALL STANDARD CONSTRUCTION DETAILS AND SPECIFICATIONS.
 - IT WILL BE THE RESPONSIBILITY OF THE CONTRACTOR TO PROTECT ALL PUBLIC UTILITIES IN THE CONSTRUCTION OF THE PROJECT. ALL MANHOLES, CLEANOUTS, VALVE BOXES, FIRE HYDRANTS, ETC., MUST BE ADJUSTED TO PROPER LINE AND GRADE BY THE CONTRACTOR PRIOR TO AND AFTER THE PLACING OF PERMANENT PAVING. UTILITIES MUST BE MAINTAINED TO PROPER LINE AND GRADE DURING THE CONSTRUCTION OF THE PAVING FOR THIS DEVELOPMENT.
 - ALL FILL SHALL BE COMPACTED TO 95% STANDARD PROCTOR DENSITY IN A MAXIMUM OF 6" (SIX) INCH LIFTS. USING SHEEP'S FOOT ROLLER.
 - THE CONTRACTOR IS RESPONSIBLE TO PRESERVE THE FINAL ALIGNMENT AND GRADE STAKES AS SET BY THE SURVEYOR UNTIL THE COMPLETED PAVEMENT IS ACCEPTED BY THE CITY. IN THE EVENT STAKES ARE LOST, THE ENGINEER/SURVEYOR ACCEPTS NO RESPONSIBILITY FOR PAVEMENT ALIGNMENT OR GRADE.
 - PAVEMENT DESIGN IS AS PROVIDED BY GEOTECHNICAL ENGINEER OR CITY OF KELLER STANDARDS, WHICHEVER IS GREATER.
 - CONSTRUCTION JOINTS SHALL BE SPACED AT 15 FEET, EACH WAY.
 - ALL RAMPS SHALL BE INSTALLED PER CITY OF CITY OF ROCKWALL SPECIFICATIONS AND SHALL INCLUDE DETECTABLE WARNINGS.
 - ALL SIDEWALKS SHALL HAVE A LONGITUDINAL SLOPE LESS THAN 5.0% AND A CROSS-SLOPE LESS THAN 2.0%.
 - NEW RAISED CURBS SHALL COMPLY WITH THE CITY OF ROCKWALL STANDARD CONSTRUCTION DETAILS.

BENCHMARKS:

CITY OF ROCKWALL MONUMENT R003: BRASS DISK IN CONCRETE SOUTH OF STATE HIGHWAY NO. 66 AND NORTH OF J.W. WILLIAMS MIDDLE SCHOOL, APPROXIMATELY 21' WEST OF A CORNER BACK OF CURB AND APPROXIMATELY 53.5' SOUTHWEST OF AN 8D NAIL WITH SHINER IN POWER POLE.
ELEVATION = 529.23' (FIELD) HOLD* 529.23' (RECORD)

CITY OF ROCKWALL MONUMENT R005: BRASS DISK IN CONCRETE IN GRASS MEDIAN AT INTERSECTION OF FARM TO MARKET ROAD NO. 740 (RIDGE ROAD) AND SUMMIT RIDGE DRIVE, APPROXIMATELY 14' NORTHWEST OF A FIRE HYDRANT AND APPROXIMATELY 10' WEST OF A STREET SIGN.
ELEVATION = 578.71'(RECORD) 578.63' (FIELD)