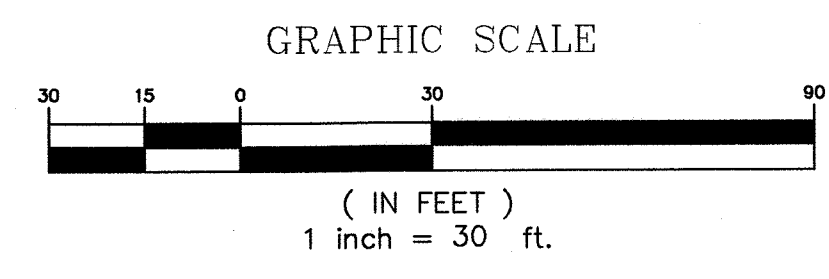


MEP Engineering
Telios Corporation
12946 Dairy Ashford, Suite 130 Sugar Land, Texas 77478

Structural Engineering
ASA Dally Structural Engineers
9800 Richmond Ave., Suite 460 Houston, Texas 77042

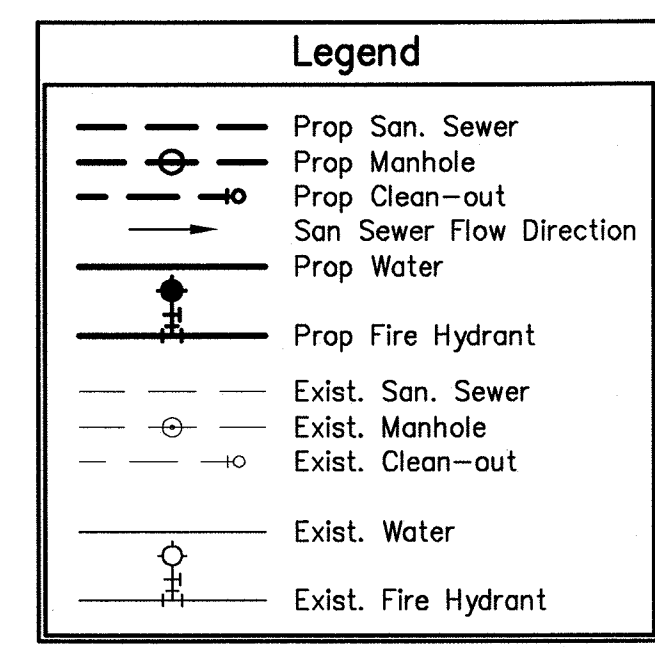
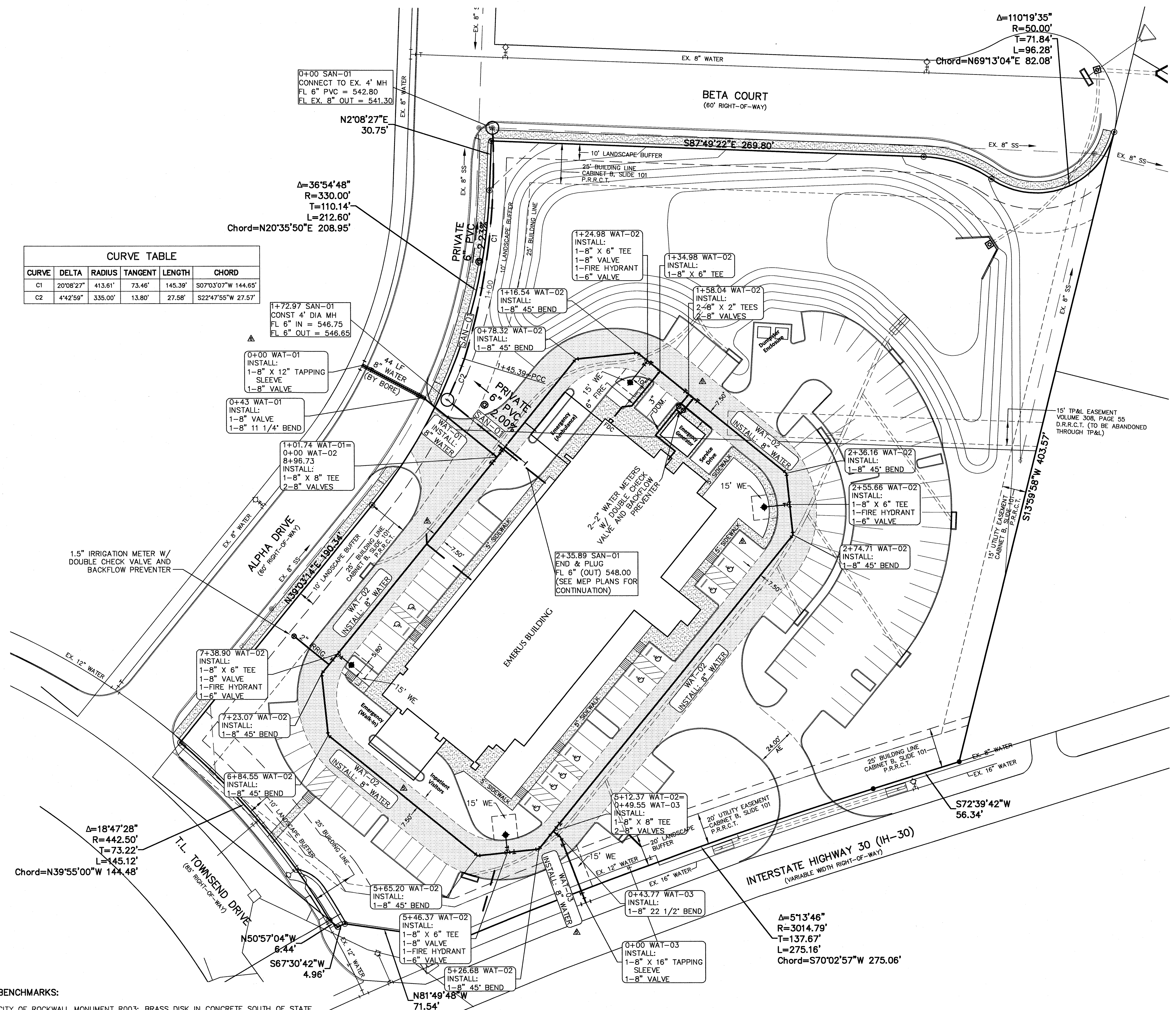
Landscape Architect
Studio 13 Design Group
519 Bennett Lane, Suite 203 Lewisville, TX 75057

Civil Engineering
DOWDEY, ANDERSON & ASSOCIATES, INC.
5225 Village Creek Drive, Suite 200 Plano, Texas 75093
Phone: 972.931.0694 Fax: 972.931.8538
STATE REGISTRATION NUMBER: F-399



CURVE TABLE

CURVE	DELTA	RADIUS	TANGENT	LENGTH	CHORD
C1	20°08'27"	413.61'	73.46'	145.39'	S07°03'07"W 144.65'
C2	4°42'59"	335.00'	13.80'	27.58'	S22°47'55"W 27.57'



LEGEND

FADUE = FIRELANE, PUBLIC ACCESS & UTILITY EASEMENT
 AE = PUBLIC ACCESS EASEMENT
 SSE = SANITARY SEWER EASEMENT
 DE = DRAINAGE EASEMENT
 WE = WATER EASEMENT
 UE = UTILITY EASEMENT
 HC = HANDICAP PARKING SPACE

■ = PROP. FIRELANE, PUBLIC ACCESS AND UTILITY EASEMENT

NOTES

- ALL WATER PIPE TO BE CLASS 200.
- INSTALL BLUE EMS DISKS ON THE WATER LINE AT EVERY CHANGE IN DIRECTION, VALVE, FIRE HYDRANT AND SERVICE.
- THE WATER SUPPLY TEST FOR THE HYDRAULIC DESIGN OF THE FIRE PROTECTION SYSTEMS AND NEEDED FIRE FLOW SHALL BE WITNESSED BY THE ROCKWALL FIRE DEPARTMENT.

RECORD DRAWINGS **JANUARY 20, 2014**

NOTE: THE INTENT OF THE OWNER AND ENGINEER WAS TO CONSTRUCT THE IMPROVEMENTS ACCORDING TO THESE PLANS AS APPROVED BY THE CITY OF ROCKWALL. THE LINES AND GRADES WERE SET ON THE GROUND FOR CONSTRUCTION ACCORDING TO SAID PLANS. WE ARE NOT AWARE OF ANY CHANGES OR REVISIONS TO THESE PLANS DURING CONSTRUCTION EXCEPT AS NOTED ON THE PLANS.

BENCHMARKS:

CITY OF ROCKWALL MONUMENT R003: BRASS DISK IN CONCRETE SOUTH OF STATE HIGHWAY NO. 66 AND NORTH OF J.W. WILLIAMS MIDDLE SCHOOL, APPROXIMATELY 21' WEST OF A CORNER BACK OF CURB AND APPROXIMATELY 53.5' SOUTHWEST OF AN 8D NAIL WITH SHINER IN POWER POLE.
 ELEVATION = 529.23' (FIELD) HOLD* 529.23' (RECORD)

CITY OF ROCKWALL MONUMENT R005: BRASS DISK IN CONCRETE IN GRASS MEDIAN AT INTERSECTION OF FARM TO MARKET ROAD NO. 740 (RIDGE ROAD) AND SUMMIT RIDGE DRIVE, APPROXIMATELY 14' NORTHWEST OF A FIRE HYDRANT AND APPROXIMATELY 10' WEST OF A STREET SIGN.
 ELEVATION = 578.71'(RECORD) 578.63' (FIELD)

Emerus Emergency Hospital - Rockwall



Interstate Highway 30 and T.L. Townsend Drive
 Rockwall, TX 75087

Water & Sanitary Sewer Plan