



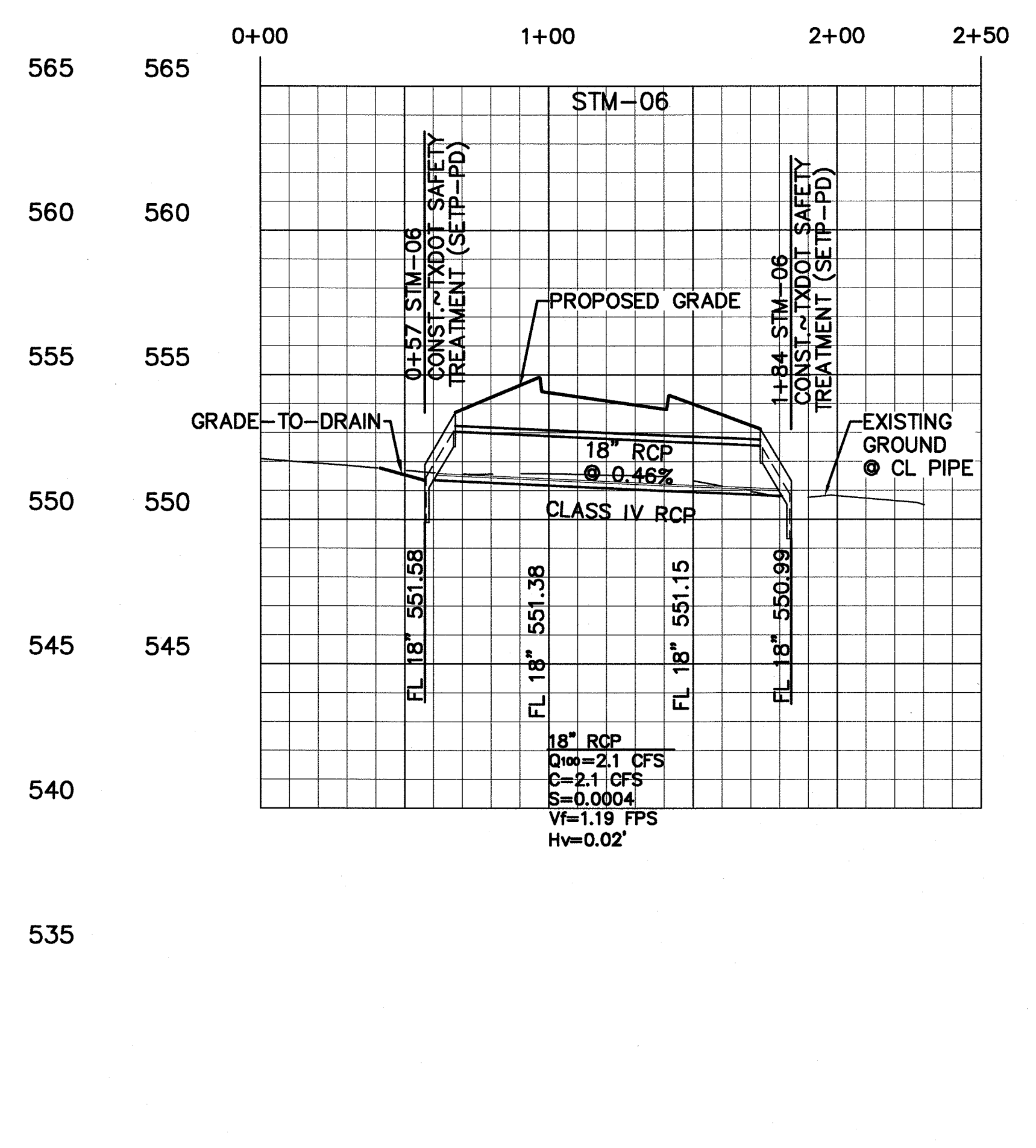
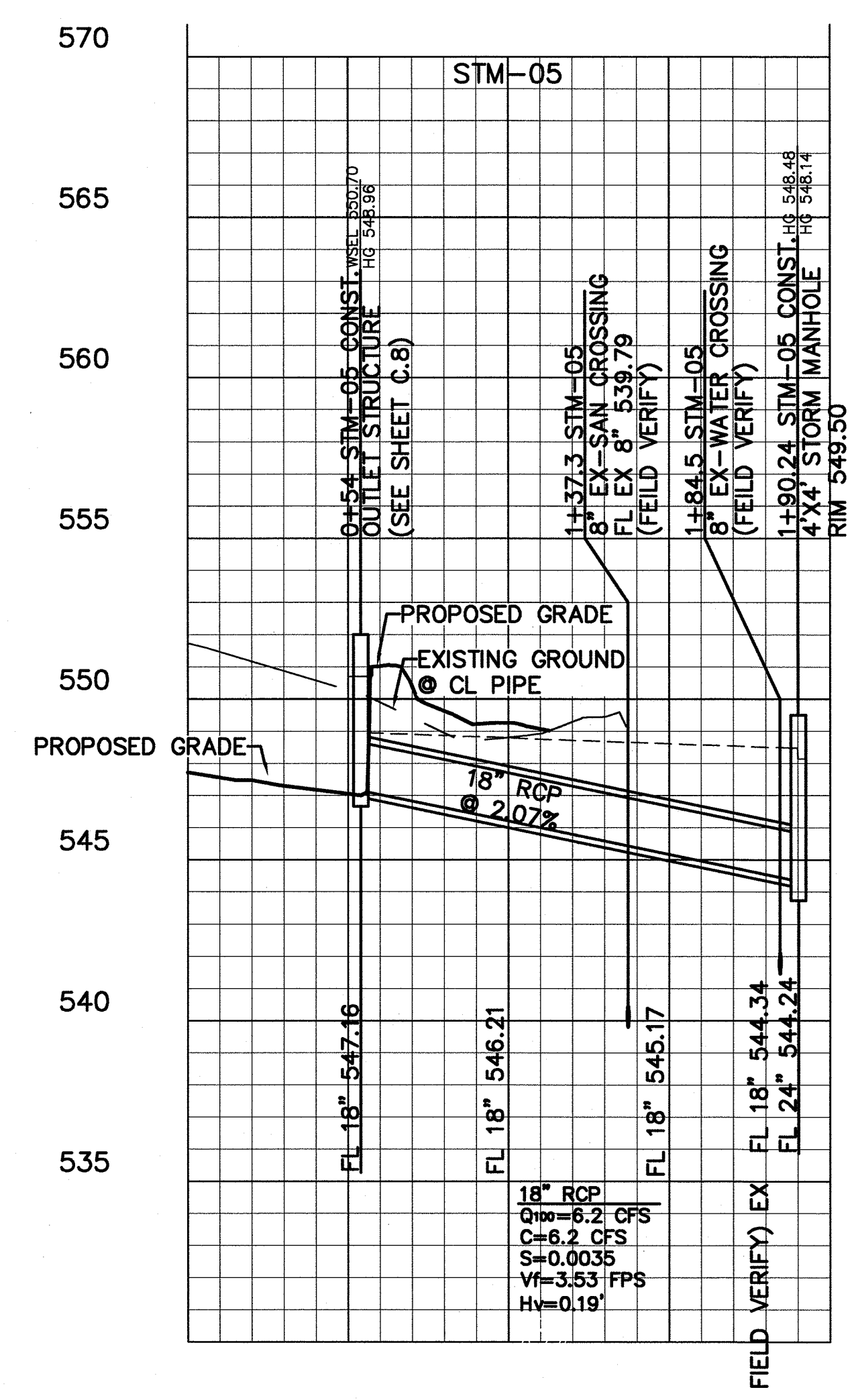
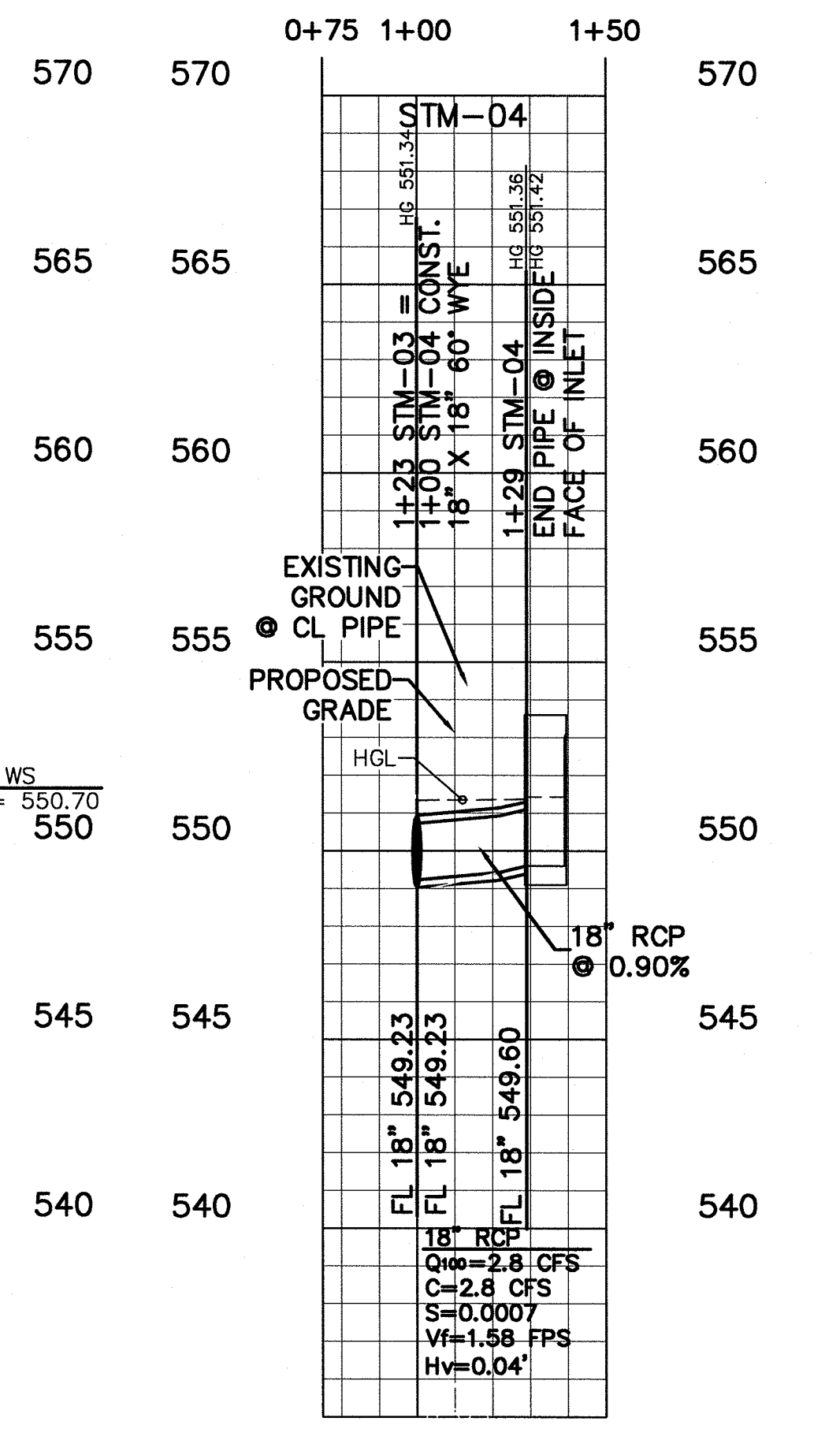
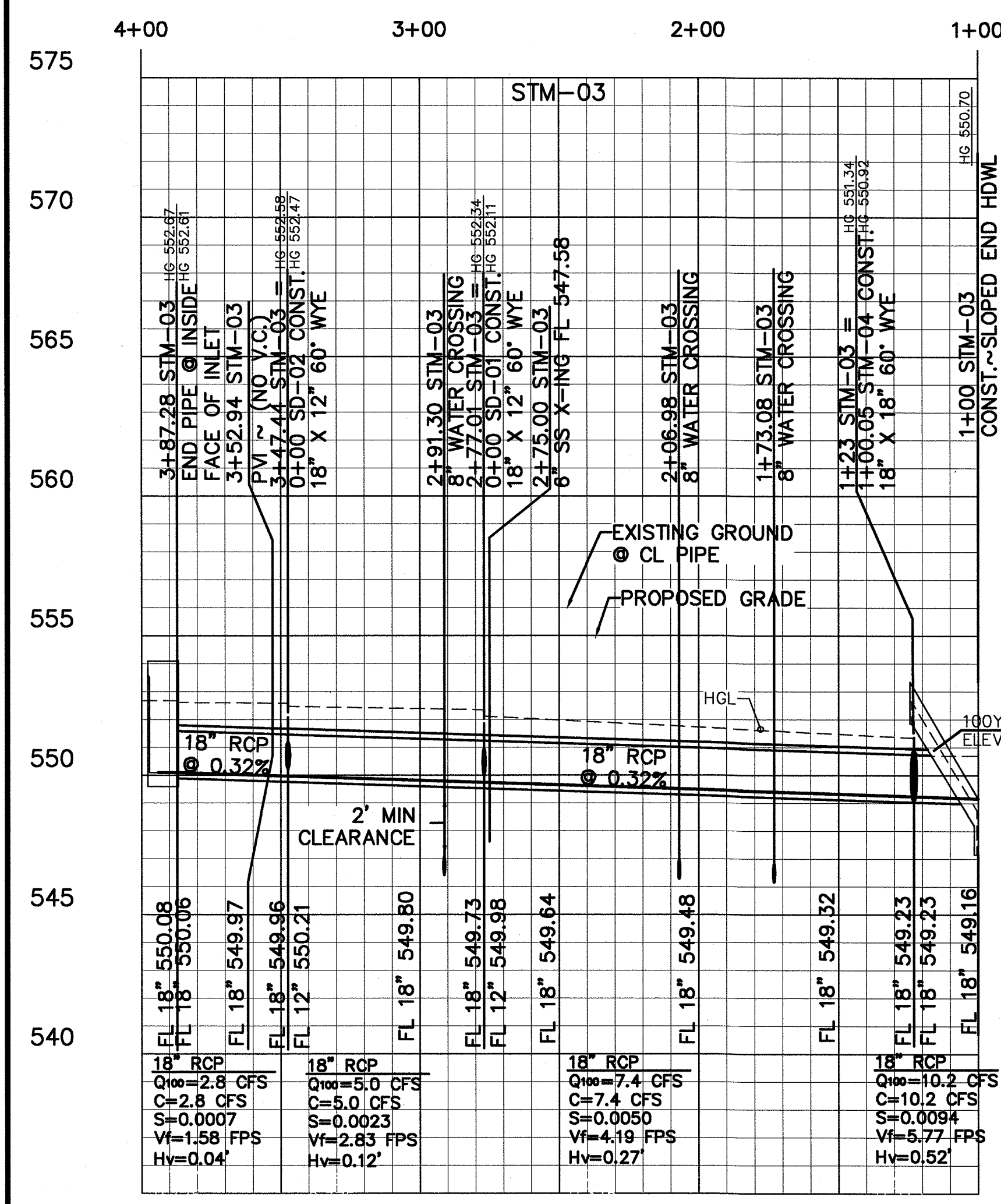
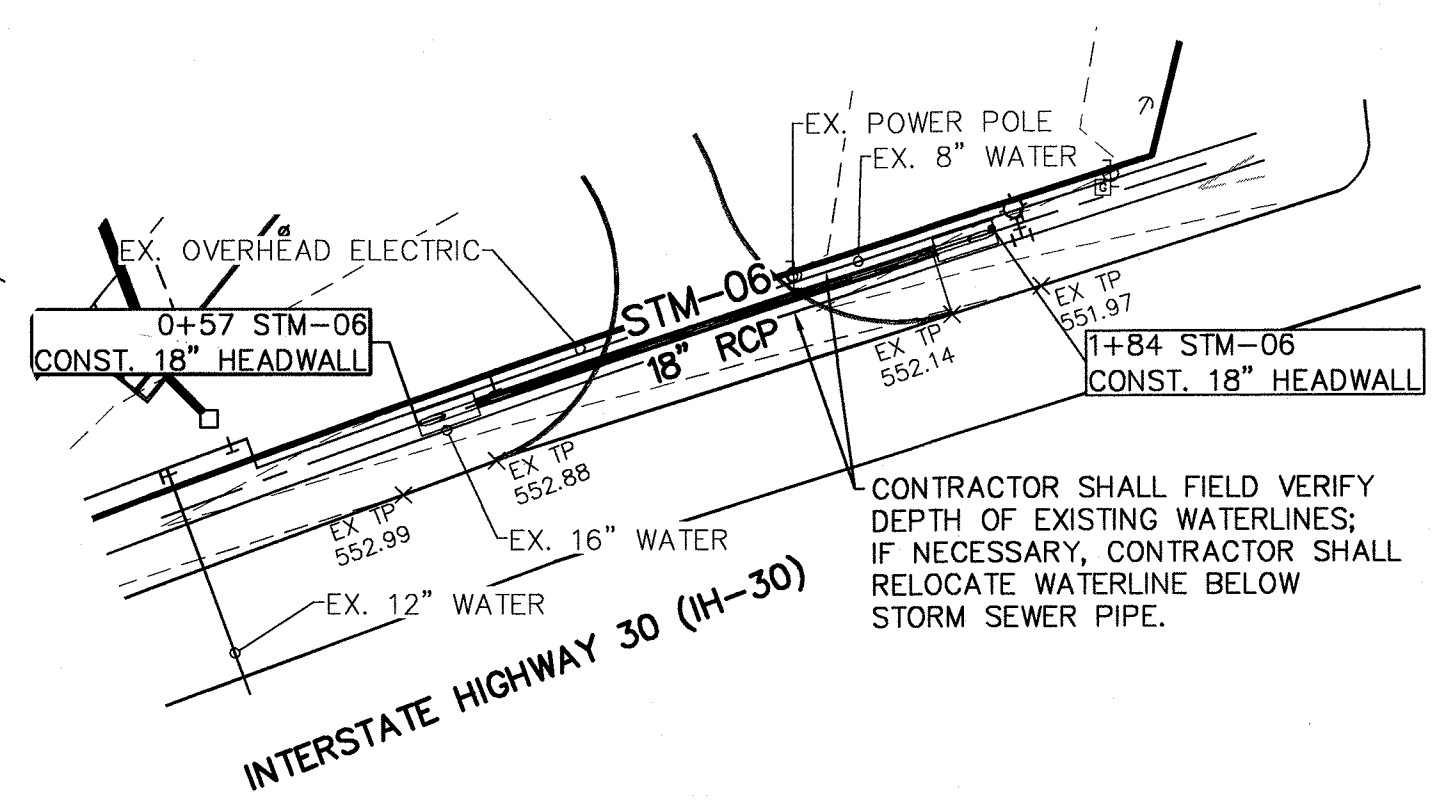
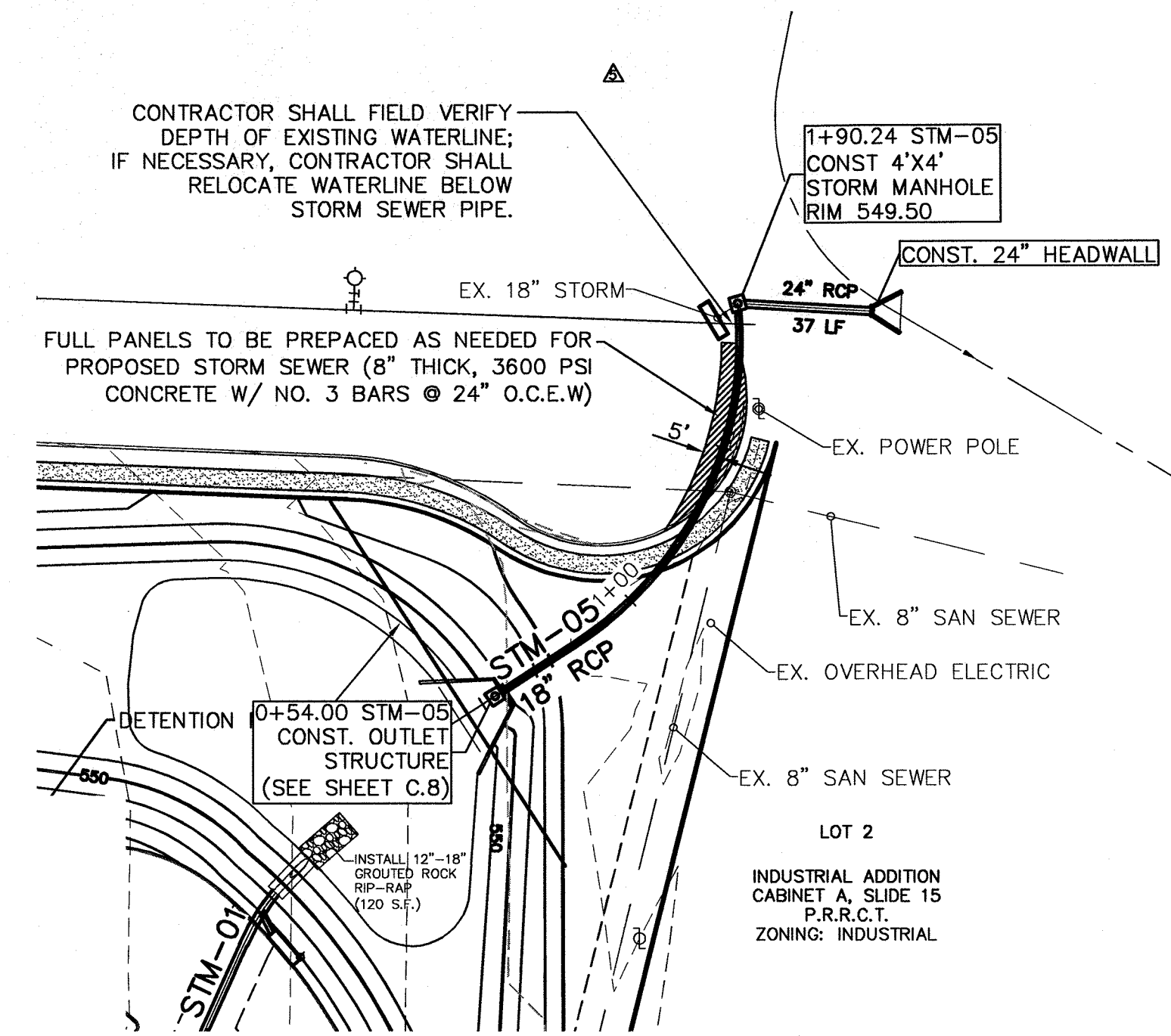
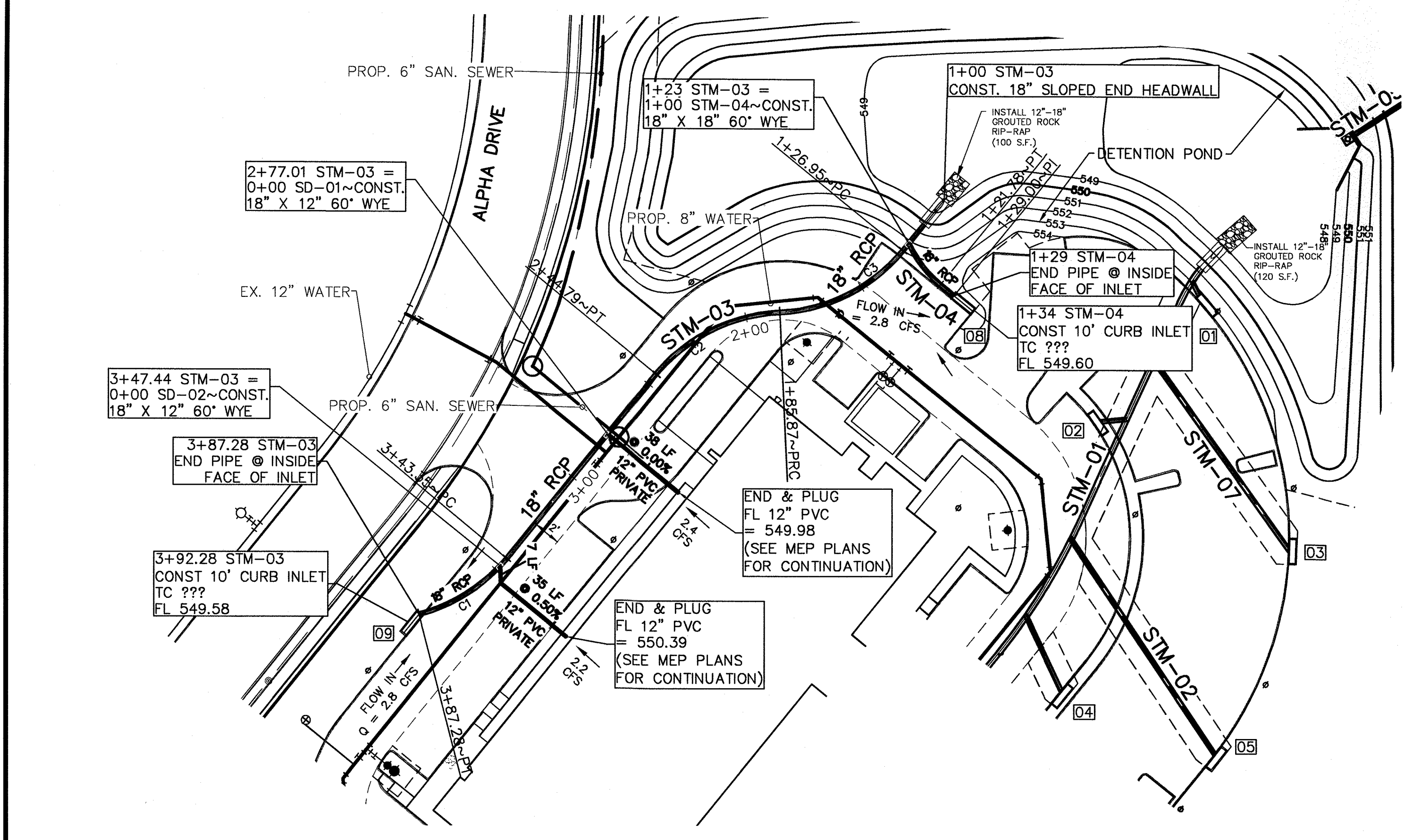
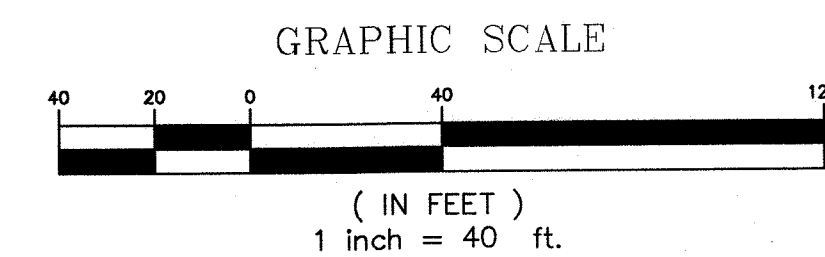
MEP Engineering
Tellos Corporation
12946 Dairy Ashford, Suite 130 Sugar Land, Texas 77478

Structural Engineering
ASA Dally Structural Engineers
9800 Richmond Ave., Suite 460 Houston, Texas 77042

Landscape Architect
Studio 13 Design Group
519 Bennett Lane, Suite 203 Lewisville, TX 75057

Civil Engineering
DOWDEY, ANDERSON & ASSOCIATES, INC.
5225 Village Creek Drive, Suite 200 Plano, Texas 75093
Phone 972.931.0694 Fax 972.931.8538
STATE REGISTRATION NUMBER: F-399

CURVE TABLE					
CURVE	DELTA	RADIUS	TANGENT	LENGTH	CHORD
C1	35°56'11"	70.03'	22.71'	43.92'	S57°32'55"W 43.21'
C2	48°13'40"	70.00'	31.33'	58.92'	S63°10'04"W 57.20'
C3	48°13'40"	70.00'	31.33'	58.92'	S63°10'04"W 57.20'



BENCHMARKS:

CITY OF ROCKWALL MONUMENT R003: BRASS DISK IN CONCRETE SOUTH OF STATE HIGHWAY NO. 66 AND NORTH OF J.W. WILLIAMS MIDDLE SCHOOL, APPROXIMATELY 21' WEST OF A CORNER BACK OF CURB AND APPROXIMATELY 53.5' SOUTHWEST OF AN 8D NAIL WITH SHINER IN POWER POLE. ELEVATION = 529.23' (FIELD) HOLD* 529.23' (RECORD)

CITY OF ROCKWALL MONUMENT R005: BRASS DISK IN CONCRETE IN GRASS MEDIAN AT INTERSECTION OF FARM TO MARKET ROAD NO. 740 (RIDGE ROAD) AND SUMMIT RIDGE DRIVE, APPROXIMATELY 14' NORTHWEST OF A FIRE HYDRANT AND APPROXIMATELY 10' WEST OF A STREET SIGN. ELEVATION = 578.71'(RECORD) 578.63' (FIELD)

RECORD DRAWINGS JANUARY 20, 2014

NOTE: THE INTENT OF THE OWNER AND ENGINEER WAS TO CONSTRUCT THE IMPROVEMENTS ACCORDING TO THESE PLANS AS APPROVED BY THE CITY OF ROCKWALL. THE LINES AND GRADES WERE SET ON THE GROUND FOR CONSTRUCTION ACCORDING TO SAID PLANS. WE ARE NOT AWARE OF ANY CHANGES OR REVISIONS TO THESE PLANS DURING CONSTRUCTION EXCEPT AS NOTED ON THE PLANS.

Emerus Emergency Hospital - Rockwall



Interstate Highway 30 and T.L. Townsend Drive
Rockwall, TX 75087

STM-03, STM-04, STM-05 & STM-06 Storm Sewer Plan & Profiles