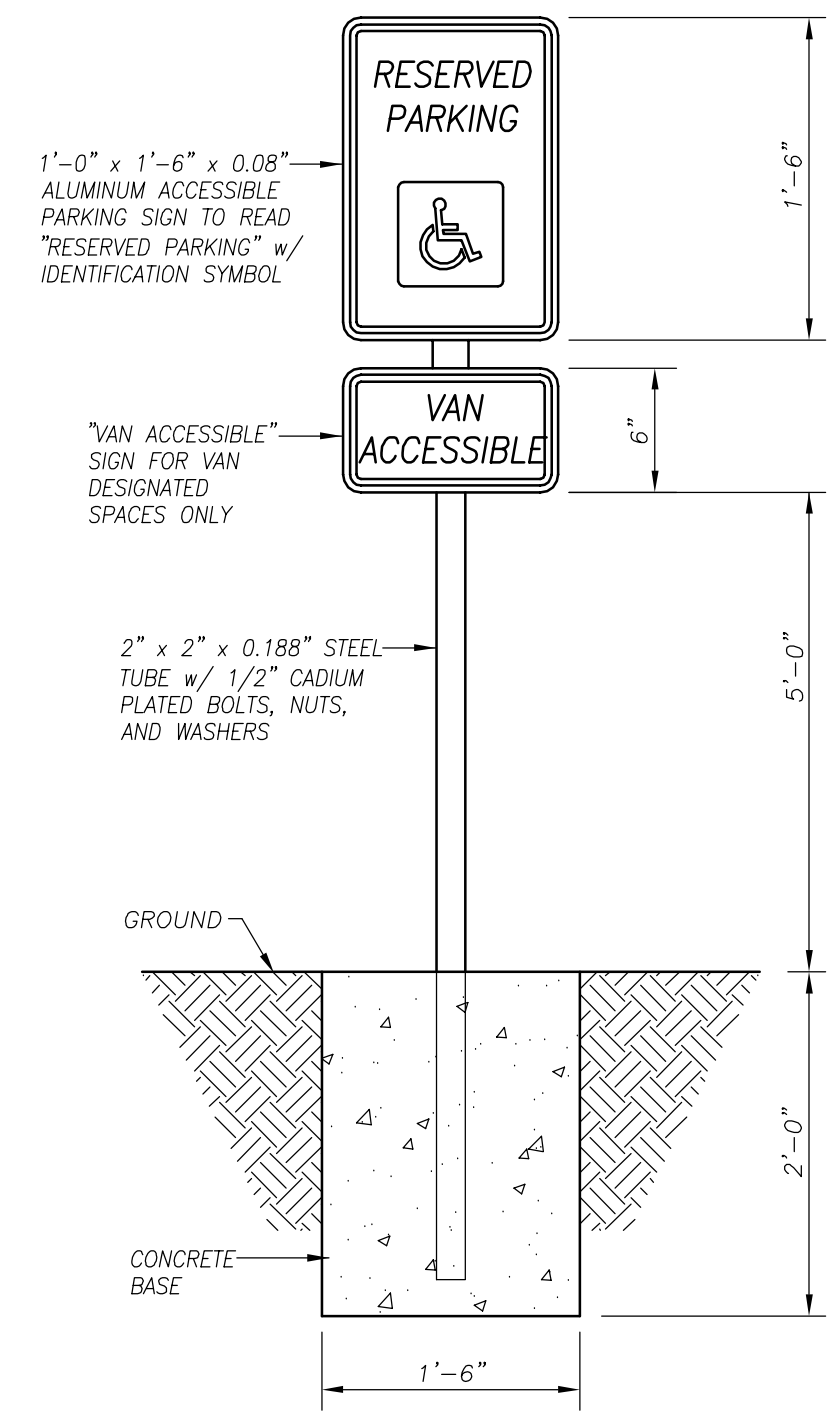
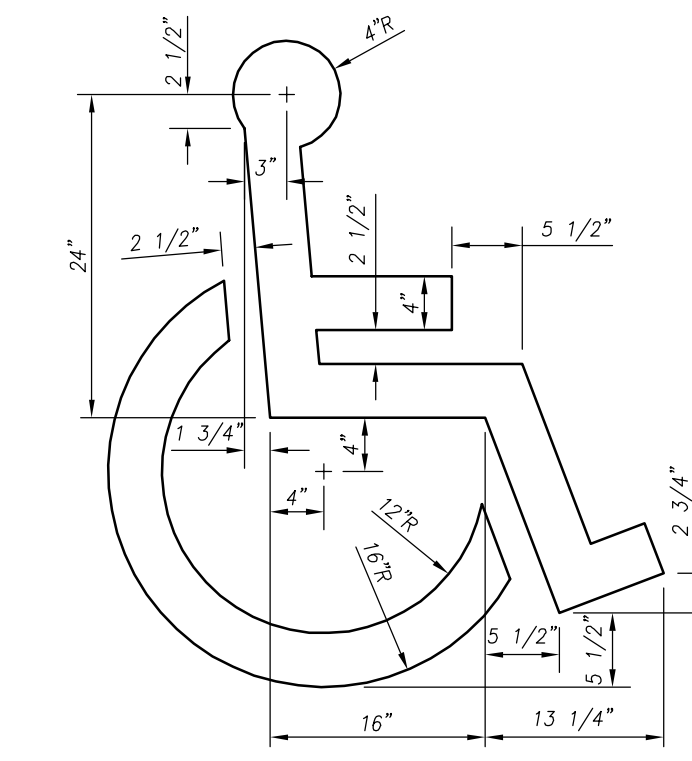


NOTE: DETECTABLE WARNINGS SHALL CONSIST OF RAISED TRUNCATED DOMES WITH A DIAMETER OF NOMINAL 0.9 IN (23mm), A HEIGHT OF NOMINAL 0.2 IN (5mm) AND A CENTER-TO-CENTER SPACING OF NOMINAL 2.35 IN (60mm) AND SHALL CONTRAST VISUALLY WITH ADJOINING SURFACES, EITHER LIGHT-ON-DARK, OR DARK-ON-LIGHT.

TYPICAL ACCESSIBLE STRIPING WITH ADA RAMPS
 N.T.S.



ACCESSIBLE SIGN
 N.T.S.

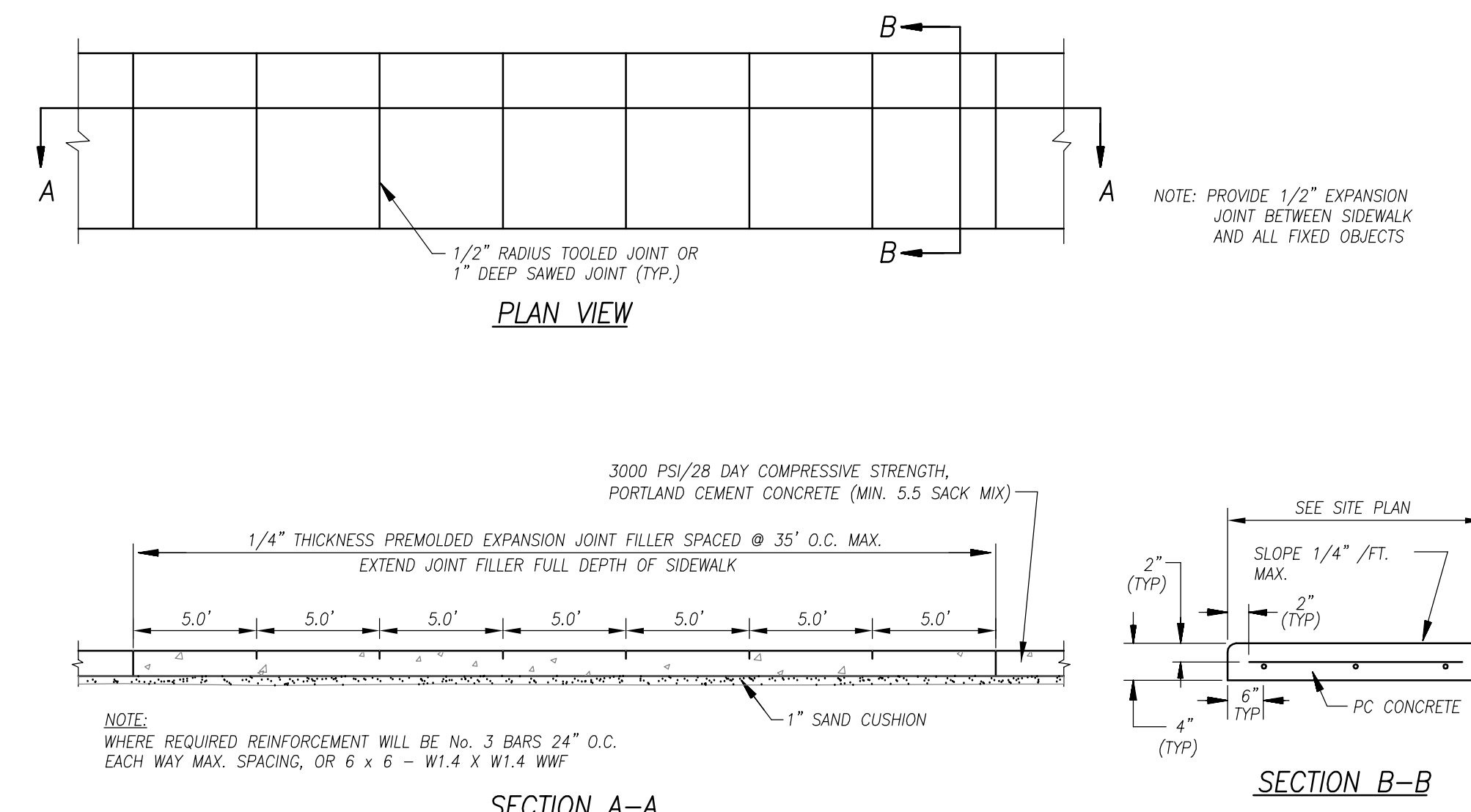


ACCESSIBLE SYMBOL PAVEMENT MARKING
 SYMBOL: BLUE OR WHITE

NOTE:
 USE CITY OF ROCKWALL
 STANDARDS AND NCTCOG
 3rd EDITION

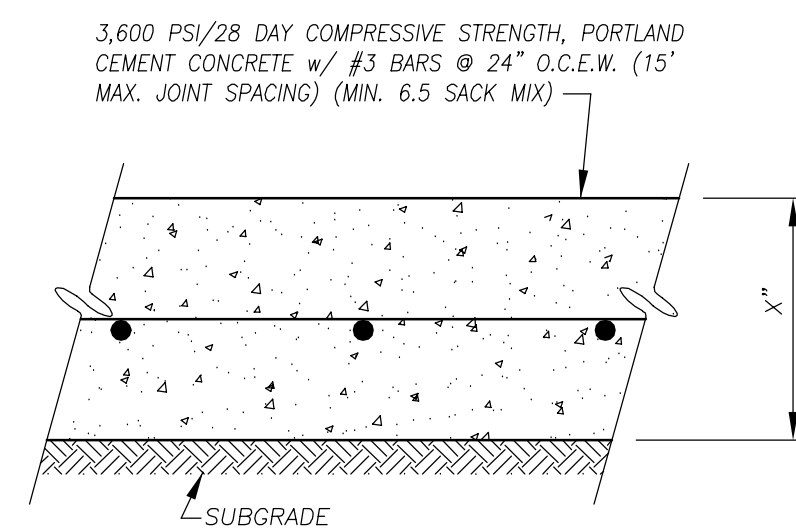
RECORD DRAWINGS
 AUGUST 27, 2014

TO THE BEST OF OUR KNOWLEDGE, CARNEY ENGINEERING, PLLC, HEREBY STATES THAT THESE PLANS ARE AS-BUILT. THIS INFORMATION IS BASED ON SURVEYS AT THE SITE AND INFORMATION PROVIDED BY THE CONTRACTOR.



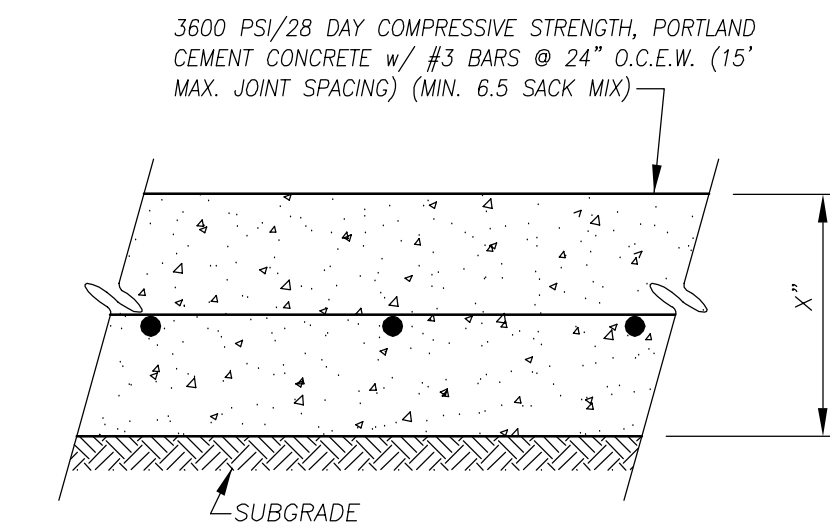
NOTE: WHERE REQUIRED REINFORCEMENT WILL BE No. 3 BARS 24\"/>

CONCRETE SIDEWALK



X*(IN) = 7\"/>

HEAVY DUTY CONCRETE SECTION



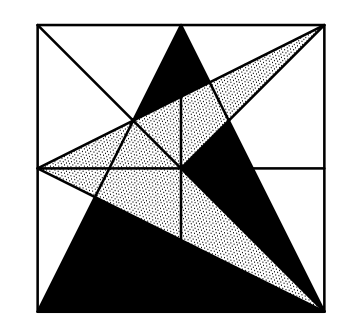
X*(IN) = 5\"/>

REGULAR DUTY CONCRETE SECTION

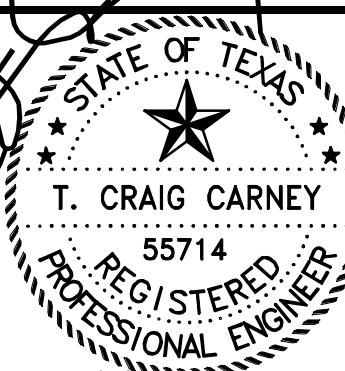
PAVEMENT SECTIONS

DUNKIN' DONUTS & RETAIL SPACE
RIDGE ROAD & SUMMER LEE DR.
ROCKWALL, TEXAS

DETAILS



CARNEY ENGINEERING COMPANY
 4508 Hinton Dr.
 Plano, Texas 75024
 PH (469) 443-0861
 FAX (469) 443-0863



08/27/14
 TYPE FIRM REGISTRATION NO: F-5033

DRAWN BY: GWM
 CHECKED BY: T.C.C.
 START DATE: MAY 2013
 SCALE: AS SHOWN
 PROJECT NO: 24437-1015

SHEET
C-602