

VICINITY MAP
NO SCALE

****CAUTION--NOTICE TO CONTRACTOR****

THE CONTRACTOR IS SPECIFICALLY CAUTIONED THAT THE LOCATION AND/OR ELEVATION OF EXISTING UTILITIES AS SHOWN ON THESE PLANS IS BASED ON RECORDS OF THE VARIOUS UTILITY COMPANIES AND, WHERE POSSIBLE, MEASUREMENTS TAKEN IN THE FIELD. THE INFORMATION IS NOT TO BE RELIED ON AS BEING EXACT OR COMPLETE. THE CONTRACTOR SHALL CONTACT THE APPROPRIATE UTILITY COMPANY TWO WORKING DAYS PRIOR TO ANY EXCAVATION TO REQUEST EXACT FIELD LOCATION OF UTILITIES. IT SHALL BE THE RESPONSIBILITY OF THE CONTRACTOR TO RELOCATE ALL EXISTING UTILITIES WHICH CONFLICT WITH THE PROPOSED IMPROVEMENTS SHOWN ON THE PLANS.

UTILITY CONSTRUCTION NOTES:

1. THE MINIMUM HORIZONTAL SEPARATION BETWEEN PARALLEL WATER AND SEWER LINES IS NINE (9) FEET, OR MINIMUM VERTICAL SEPARATION BETWEEN CROSSING WATER AND SEWER LINES IS EIGHTEEN (18) INCHES.
2. DIMENSIONS SHOWN ARE TO CENTER LINE OF PIPE OR FITTING OR TO CENTER LINE OF MANHOLE.
3. THE TOP ELEVATION OF MANHOLES CONSTRUCTED IN PAVED AREAS SHALL MATCH FINISH AND SEALED GRADE. THE TOP ELEVATION OF MANHOLES CONSTRUCTED IN NON-PAVED AREAS SHALL BE THREE (3) INCHES ABOVE FINISHED GRADE (UNLESS NOTED).
4. ALL MANHOLE RING AND LIDS TO BE 30" DIAMETER. SEE SEWER DETAIL SHEET FOR MORE DETAILS.
5. WATER LINE SHALL BE AWWA C900 PVC, CLASS 200, DR 14 PRESSURE RATED WITH INTEGRAL BELL.
6. FIRE HYDRANTS SHALL BE AMERICAN FLOW CONTROL B-84-B. FIRE HYDRANTS ARE TO BE LOCATED BETWEEN 3' AND 6' OF THE CURB HAVING A MINIMUM OF 20' RADII.
7. CONTRACTOR SHALL REFER TO MEP ENGINEERING PLANS AND SPECIFICATIONS FOR ACTUAL LOCATION OF ALL UTILITY ENTRANCES TO BUILDING INCLUDING BUT NOT LIMITED TO SANITARY SEWER LATERALS, DOMESTIC AND FIRE PROTECTION WATER SERVICE, ELECTRICAL, TELEPHONE AND GAS SERVICE. CONTRACTOR SHALL COORDINATE INSTALLATION OF UTILITIES IN SUCH A MANNER AS TO AVOID CONFLICTS AND ASSURE PROPER DEPTHS ARE ACHIEVED AS WELL AS COORDINATING WITH CITY UTILITY REQUIREMENTS AS TO LOCATION AND SCHEDULING OF TIE-INS/CONNECTIONS WITH CITY CONNECTING TO EXISTING UTILITIES.
8. CONTRACTOR SHALL GROUT AROUND ALL PIPE ENTRANCES TO SANITARY SEWER MANHOLES WITH NON-SHRINKING GROUT TO ASSURE CONNECTION IS WATER TIGHT.
9. CONTRACTOR SHALL ON ALL UTILITIES, COORDINATE INSPECTION WITH APPROPRIATE AUTHORITIES PRIOR TO COVERING TRENCHES AT INSTALLATION.
10. CONSTRUCTION SHALL COMPLY WITH ALL GOVERNING CODES AND REQUIREMENTS. THE CONTRACTOR SHALL CONDUCT ALL REQUIRED TESTS TO THE SATISFACTION OF THE UTILITY COMPANIES AND OWNERS INSPECTING AUTHORITIES.
11. SANITARY SEWER PIPE SHALL BE PVC, ASTM D 3034 (SDR-26) WITH INTEGRAL BELL, BELL & SPIGOT TYPE JOINTS (WITH RUBBER).
12. CONTRACTOR SHALL COMPLY TO THE FULLEST EXTENT WITH THE LATEST STANDARDS OF OSHA DIRECTIVES OR ANY OTHER AGENCY HAVING JURISDICTION FOR EXCAVATION AND TRENCHING PROCEDURE. THE CONTRACTOR SHALL USE SUPPORT SYSTEMS, SLOPING, BENCHING, AND OTHER MEANS OF PROTECTION. THIS IS TO INCLUDE, BUT NOT LIMITED TO, ACCESS AND EGRESS FROM ALL EXCAVATION AND TRENCHING. CONTRACTOR IS RESPONSIBLE TO COMPLY WITH PERFORMANCE CRITERIA FOR OSHA.
13. WHENEVER SANITARY SEWER LINES ARE CROSSING WITHIN 9 FEET ABOVE OR BELOW A WATER LINE, THE WASTEWATER LINE SHALL BE 10 FEET ON EACH SIDE OF THE WATER LINE. THE AWWA C900 PVC LINE SHALL BE CENTERED UPON THE WATER LINE. A MINIMUM VERTICAL DISTANCE OF 18" (EIGHTEEN INCHES) (CLEAR DISTANCE) SHALL BE PROVIDED.
14. STATE LAW REQUIRES THAT THE CONTRACTOR PROVIDE A TRENCH SAFETY PLAN (TRENCH SHORING), PREPARED BY A PROFESSIONAL ENGINEER, FOR UTILITY TRENCHES IF A DEPTH IS GREATER THAN FIVE (5) FEET. THE CONTRACTOR SHALL SUBMIT THE TRENCH SAFETY PLAN TO THE CITY'S PUBLIC WORKS OR THE CITY'S WATER UTILITIES PRIOR TO THE START OF CONSTRUCTION.
15. SITE UTILITY CONTRACTOR SHALL PLUG ALL UTILITY SERVICES OUTSIDE OF BUILDING FOR BUILDING UTILITY CONTRACTOR TO TIE-INTO.
16. INSTALL BLUE EMS DISKS ON THE WATER LINE AT EVERY CHANGE IN DIRECTION, BEND, FIRE HYDRANT, VALVE, OR SERVICE.
17. INSTALL GREEN EMS DISKS ON THE SEWER LINE AT EVERY CHANGE IN DIRECTION, MANHOLE, CLEANOUT, OR SERVICE.
18. USE CITY OF ROCKWALL STANDARDS OF DESIGN AND NCTCOG 3rd EDITION STANDARDS.

LEGEND

---	---	PROPERTY BOUNDARY
FL	FL	FIRE LANE
TL	TL	TEMPORARY FIRE LANE
WB	WB	PROPOSED 8" WATER LINE
WG	WG	PROPOSED 6" WATER LINE
W2.5	W2.5	PROPOSED 2 1/2" WATER LINE
SB	SB	PROPOSED 8" SEWER LINE
S6	S6	PROPOSED 6" SEWER LINE
---	---	PROPOSED EASEMENT LINE
		CROSSWALK

File: V:\PROJECTS\ANY\3\24437\1015\CADD\ACAD\244371015_C-301.DWG. Saved: 8/27/2014 11:26:24 AM. Plotted: 8/29/2014 9:01:50 AM. User: Kane, Peter. LastSavedBy: 3276

RECORD DRAWINGS
AUGUST 27, 2014

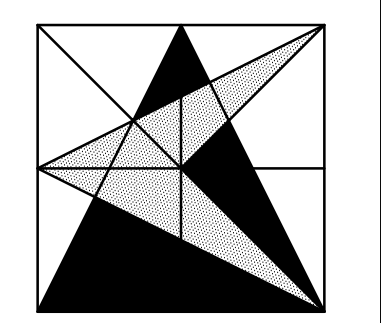
TO THE BEST OF OUR KNOWLEDGE, CARNEY ENGINEERING, PLLC, HEREBY STATES THAT THESE PLANS ARE AS-BUILT. THIS INFORMATION IS BASED ON SURVEYING AT THE SITE AND INFORMATION PROVIDED BY THE CONTRACTOR.

REVISIONS

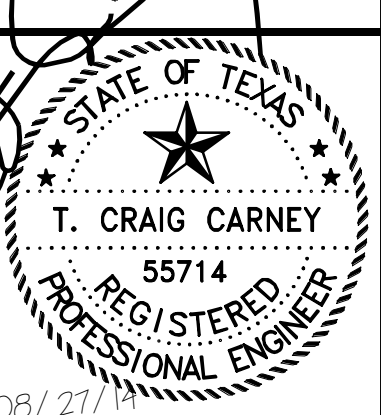
#1	10/21/13	REVISION PER CITY COMMENTS
#2	01/10/14	UNDERGROUND DETENTION SYSTEM
#3	08/27/14	RECORD AS-BUILT DRAWINGS

DUNKIN' DONUTS & RETAIL SPACE
RIDGE ROAD & SUMMER LEE DR.
ROCKWALL, TEXAS

UTILITY PLAN



CARNEY ENGINEERING COMPANY
4508 Hinton Dr.
Ft. Worth, Texas 76104
PH (469) 443-0861
FAX (469) 443-0833



08/27/14
T.C.C.
MAY 2013
AS SHOWN
PROJECT NO. 24437-1015
SHEET