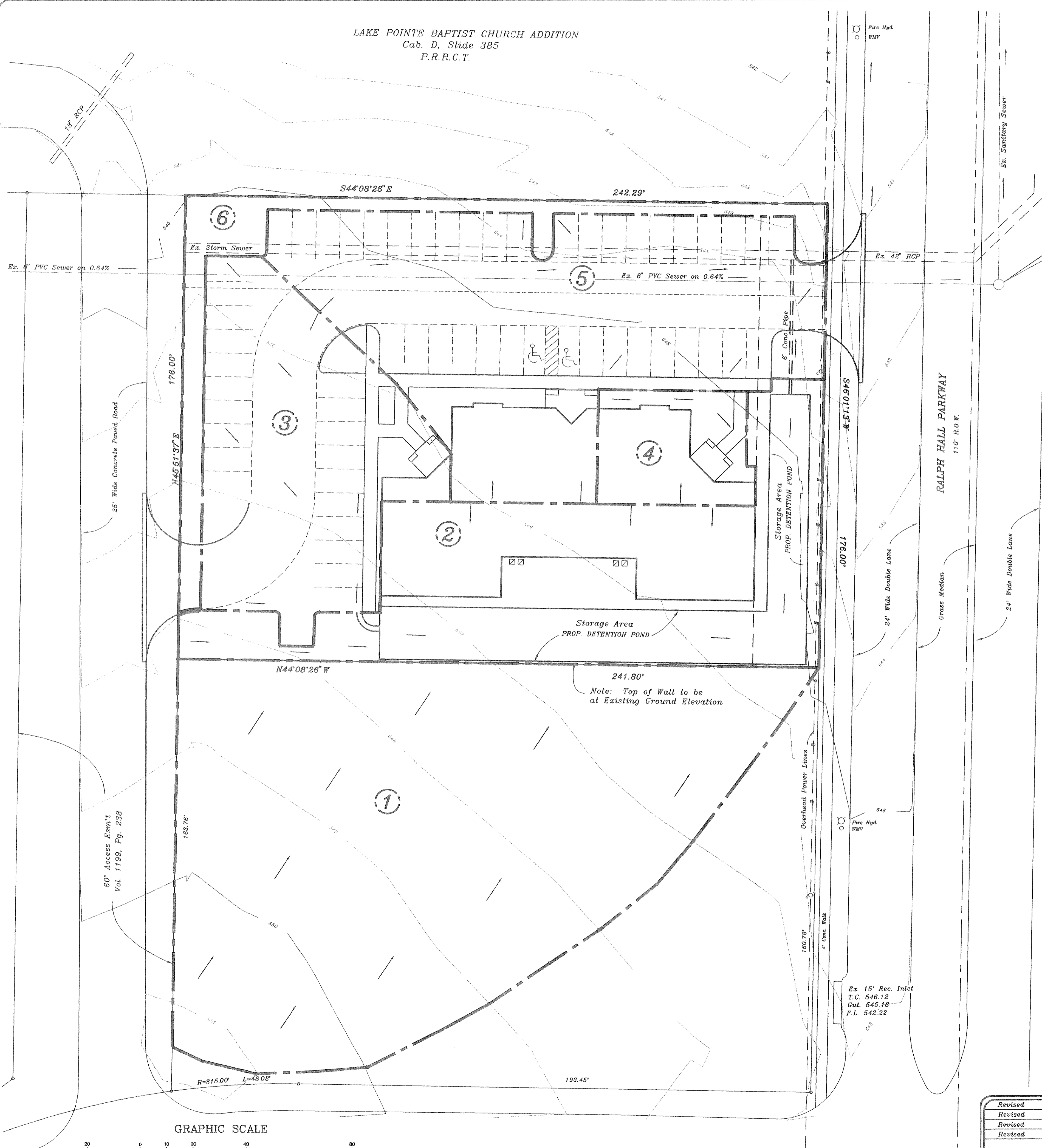


LAKE POINTE BAPTIST CHURCH ADDITION  
 Cab. D, Slide 385  
 P.R.R.C.T.



Bench Marks:  
 B.M. No. 1 Found cut square on top of Northwest curb line on Rockwall Parkway 135' Southwest of Centerline of Winter Park. Elevation = 541.65'  
 B.M. No. 2 Set Cut "X" in centerline of 4' concrete walk on Northwest side of Ralph Hall Parkway and 420' Northeast centerline of Steger Towne Drive. Elevation = 540.49'

OVERBROOK COURT

CHECK VARIOUS STORMS:

10 min	I=9.8	Q=(0.80)(9.8)(.978)	= 7.67 CFS
15 min	I=9.1	Q=(0.80)(9.1)(.978)	= 7.12 CFS
20 min	I=8.3	Q=(0.80)(8.3)(.978)	= 6.49 CFS
30 min	I=6.9	Q=(0.80)(6.9)(.978)	= 5.40 CFS
40 min	I=5.7	Q=(0.80)(5.7)(.978)	= 4.46 CFS
50 min	I=5.0	Q=(0.80)(5.0)(.978)	= 3.91 CFS
60 min	I=4.4	Q=(0.80)(4.4)(.978)	= 3.44 CFS
70 min	I=4.0	Q=(0.80)(4.0)(.978)	= 3.13 CFS
80 min	I=3.7	Q=(0.80)(3.7)(.978)	= 2.89 CFS
90 min	I=3.3	Q=(0.80)(3.3)(.978)	= 2.58 CFS

Ex. Sanitary Sewer Man Hole  
 Top = 541.14  
 F.L. In = 531.54  
 F.L. Out = 531.34

WINDMILL RIDGE ESTATES No. 3B  
 Cab. C, Slide 224  
 P.R.R.C.T.

CHECK VARIOUS STORMS:

10 min	Inflow (10)(7.67)(60)	= 4602 cf
	Outflow (0.5)(20)(1.68)(60)	= 1008 cf
		3594 cf
15 min	Inflow (15)(7.12)(60)	= 6408 cf
	Outflow (0.5)(25)(1.68)(60)	= 1260 cf
		5148 cf
20 min	Inflow (20)(6.49)(60)	= 7788 cf
	Outflow (0.5)(30)(1.68)(60)	= 1512 cf
		6276 cf
30 min	Inflow (30)(5.40)(60)	= 9720 cf
	Outflow (0.5)(40)(1.68)(60)	= 2016 cf
		7704 cf
40 min	Inflow (40)(4.46)(60)	= 10704 cf
	Outflow (0.5)(50)(1.68)(60)	= 2520 cf
		8184 cf
50 min	Inflow (50)(3.91)(60)	= 11730 cf
	Outflow (0.5)(60)(1.68)(60)	= 3024 cf
		8706 cf
60 min	Inflow (60)(3.44)(60)	= 12384 cf
	Outflow (0.5)(70)(1.68)(60)	= 3528 cf
		8856 cf
70 min	Inflow (70)(3.13)(60)	= 13146 cf
	Outflow (0.5)(80)(1.68)(60)	= 4032 cf
		9114 cf
80 min	Inflow (80)(2.89)(60)	= 13872 cf
	Outflow (0.5)(90)(1.68)(60)	= 4536 cf
		9336 cf
90 min	Inflow (90)(2.58)(60)	= 13932 cf
	Outflow (0.5)(100)(1.68)(60)	= 5040 cf
		8892 cf

Maximum Storage Volume required is 9,336 CF at the 80 minute storm duration.

DRAINAGE TABLE

DRAINAGE AREA NO.	ACRES	T.C.	C	I 100 YR.	Q 100 YR.	SUM Q 100 YR.
1	0.620	10	0.35	9.8	2.13	
2	0.291	10	0.80	"	2.28	4.40
3	0.211	10	0.80	"	1.66	6.06
4	0.057	10	0.80	"	0.45	6.51
5	0.346	10	0.80	"	2.71	2.71
6	0.073	10	0.35	"	0.25	2.96

0.978 ACRES ONSITE  
 0.620 ACRES OFFSITE  
 TOTAL = 1.598 ACRES

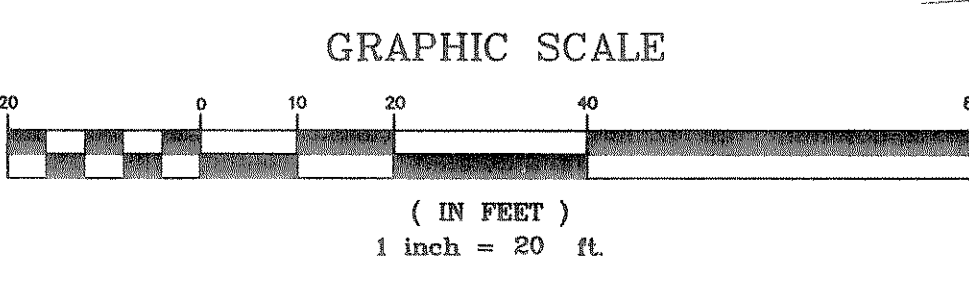
Allowable Discharge  $Q=1.598(.35)(8.3) = 4.64$  CFS  
 Discharge without Retention = 2.96 CFS  
 Discharge through Pond = 1.68 CFS

Discharge without Retention 2.96  
 Discharge through Pond 1.68

6" Pipe Discharge:  
 $Q=1.68$   
 $V=8.56$   
 $S=0.0898$   
 $C=1.68$



OWNER:  
 MICHAEL BUFFINGTON  
 616 LIECHTY COURT  
 HEATH, TEXAS 75032  
 (972) 772-7907



STEGER TOWNE DRIVE  
 65' R.O.W.

Revised	12-6-01	<b>HAROLD L. EVANS</b> CONSULTING ENGINEER P.O. BOX 28355 2331 GUS THOMASSON ROAD, SUITE 102 DALLAS, TEXAS 75228, (214) 328-8133	DESIGN H.L.E.	DRAWN JMA
Revised	2-25-02			
Revised	3-8-02			
Revised	3-25-02			
REVISION DESCRIPTION	DATE	SCALE	DESIGN	DRAWN
	11-2-01	1" = 20'	H.L.E.	JMA

<b>DRAINAGE AREA MAP</b>		SHEET NO. 5
<b>DRAKE I</b>		
<b>CITY OF ROCKWALL</b>		JOB NO. 01074