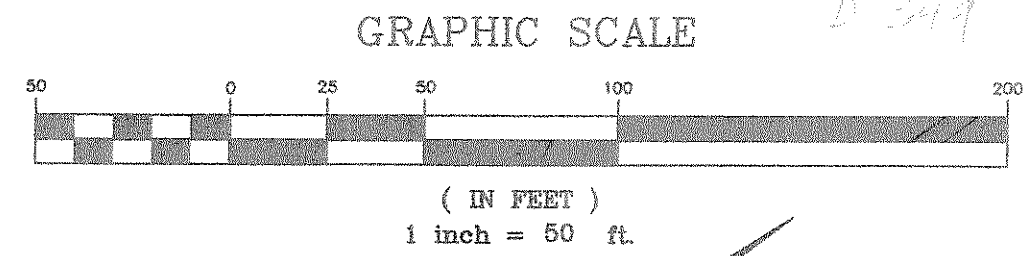


ROCKWALL PLACE APTS.  
16.00 AC.  
CAB. D, SLIDES 53 & 54  
P.R.R.C.T.

J.D. McFARLAND SURVEY,  
ABSTRACT NO. 145



Rockwall Dodge

15' UNDERGROUND UTIL. ESMT. CURVE TABLE						
CURVE	LENGTH	RADIUS	TANGENT	CH BRG	CH DIST	DELTA
C1	5.96	39.50	2.98	S48°56'32"E	5.95	08°38'26"
C2	3.72	24.50	1.86	S48°58'12"E	3.71	08°41'45"
C3	62.07	39.50	39.53	N89°38'28"W	55.88	90°02'15"
C4	62.02	39.50	39.47	S00°21'33"W	55.84	89°57'44"
C5	38.47	24.50	24.48	S00°21'31"W	34.64	89°57'39"
C6	38.50	24.50	24.52	N89°38'29"W	34.66	90°02'19"

15' UNDERGROUND UTIL. ESMT. LINE TABLE		
LINE	LENGTH	BEARING
L1	15.00'	S36°40'19"W
L2	12.98'	S53°36'17"W
L3	12.94'	N53°36'17"W
L4	15.16'	S36°40'19"W
L5	9.00'	S44°37'01"E
L6	22.57'	N45°22'41"E
L7	22.57'	S45°22'41"W
L8	9.00'	N44°37'19"W
L9	5.00'	N45°22'41"E
L10	6.17'	S45°22'41"W
L11	6.17'	S45°22'41"W
L12	1.00'	N44°37'19"W
L13	6.18'	N45°22'41"E
L14	1.00'	S44°37'19"E
L15	6.17'	S45°22'41"W

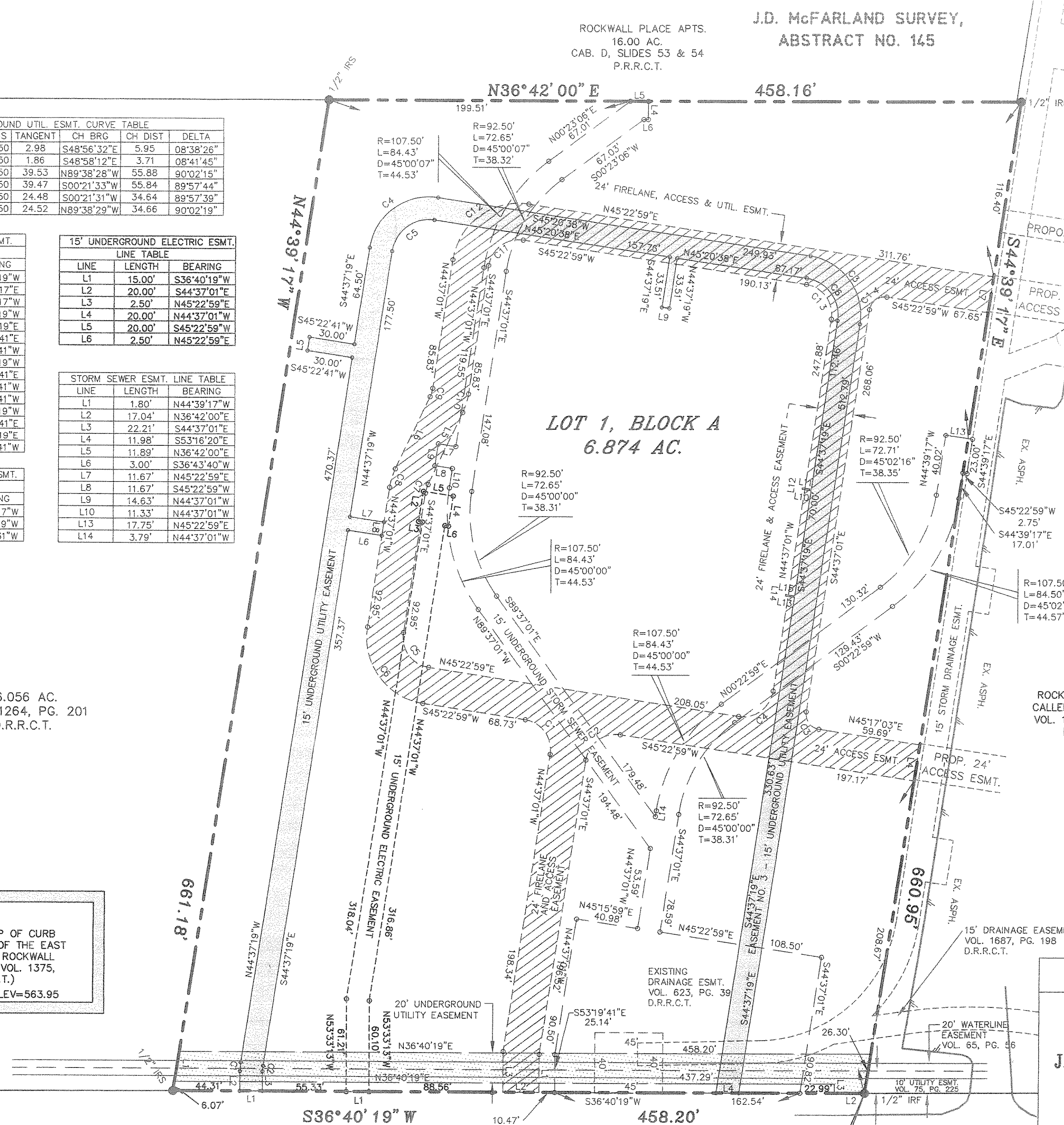
15' UNDERGROUND ELECTRIC ESMT. LINE TABLE		
LINE	LENGTH	BEARING
L1	15.00'	S36°40'19"W
L2	20.00'	S44°37'01"E
L3	2.50'	N45°22'59"E
L4	20.00'	N44°37'01"W
L5	20.00'	S45°22'59"W
L6	2.50'	N45°22'59"E

STORM SEWER ESMT. LINE TABLE		
LINE	LENGTH	BEARING
L1	1.80'	N44°39'17"W
L2	17.04'	N36°42'00"E
L3	22.21'	S44°37'01"E
L4	11.98'	S53°16'20"E
L5	11.89'	N36°43'40"W
L6	3.00'	S36°43'40"W
L7	11.67'	N45°22'59"E
L8	11.67'	S45°22'59"W
L9	14.63'	N44°37'01"W
L10	11.33'	N44°37'01"W
L13	17.75'	N45°22'59"E
L14	3.79'	N44°37'01"W

20' UNDERGROUND UTILITY ESMT. LINE TABLE		
LINE	LENGTH	BEARING
L1	20.23'	N44°39'17"W
L2	20.00'	S36°40'19"W
L3	6.00'	N53°18'31"W

6.056 AC.  
VOL. 1264, PG. 201  
D.R.R.C.T.

BENCHMARK:  
"□" CUT AT TOP OF CURB  
15' SOUTHEAST OF THE EAST  
CORNER OF THE ROCKWALL  
FORD ADDITION (VOL. 1375,  
PG. 301, D.R.R.C.T.)  
ELEV=563.95



FIRELANE LINE TABLE		
LINE	LENGTH	BEARING
L1	25.16'	S53°18'31"E
L2	24.00'	S36°40'19"W
L3	26.99'	N53°18'31"W
L4	23.96'	S44°39'17"E
L5	52.93'	S27°54'16"E
L6	52.93'	N27°54'16"W
L7	23.97'	S44°39'17"E

FIRELANE CURVE TABLE						
CURVE	LENGTH	RADIUS	TANGENT	CH BRG	CH DIST	DELTA
C1	31.42	20.00	20.00	N89°37'01"W	28.28	90°00'00"
C2	31.42	20.00	20.00	S00°22'59"W	28.28	90°00'00"
C3	15.71	10.00	10.00	S89°37'01"E	14.14	90°00'00"
C4	31.42	20.00	20.00	N00°22'59"E	28.28	90°00'00"
C5	31.42	20.00	20.00	S89°37'01"E	28.28	90°00'00"
C6	69.12	44.00	44.00	S89°37'01"E	62.23	90°00'00"
C7	5.83	20.00	2.94	S36°15'39"E	5.81	16°42'45"
C8	12.83	44.00	6.46	S36°15'39"E	12.79	16°42'45"
C9	5.83	20.00	2.94	N36°15'39"W	5.81	16°42'45"
C10	12.83	44.00	6.46	N36°15'39"W	12.79	16°42'45"
C11	31.42	20.00	20.00	S00°22'59"W	28.28	90°00'00"
C12	69.12	44.00	44.00	S00°22'59"W	62.23	90°00'00"
C13	31.42	20.00	20.00	N89°37'01"W	28.28	90°00'00"
C14	15.71	10.00	10.00	S00°22'59"W	14.14	90°00'00"

**OWNER/DEVELOPER**

ROCKWALL DIRT CO., L.C.  
P.O. BOX 16305  
LUBBOCK, TEXAS 79490  
(806) 793-2727

**ENGINEER/SURVEYOR**

DOUPHRATE & ASSOCIATES, INC.  
P.O. BOX 1336  
ROCKWALL, TEXAS 75087  
(972) 771-9004

**FINAL PLAT**  
**LOT 1, BLOCK A**  
**ROCKWALL DODGE ADDITION**  
**J.D. McFARLAND SURVEY, ABSTRACT NO. 145**  
**CITY OF ROCKWALL**  
**ROCKWALL COUNTY, TEXAS**

PROJECT: 0002PLAT  
DATE: OCT. 2000  
SCALE: 1"=50'  
DRAWN: D.L.B.  
CHK'D: W.L.D.

**DOUPHRATE & ASSOCIATES, INC.**  
ENGINEERING • PROJECT MANAGEMENT • SURVEYING  
P.O. BOX 1336 ROCKWALL, TEXAS 75087  
PHONE: (972)771-9004 FAX: (972)771-9005