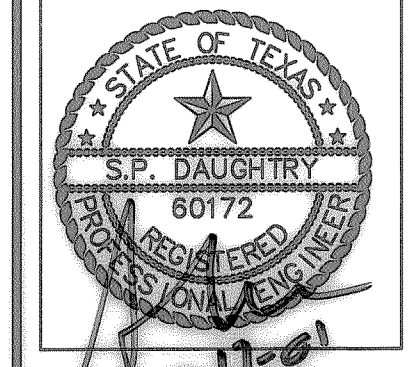


- NOTES:**
KEYED NOTES DESIGNATED BY: ○
- ① TxDOT INTERSTATE ACCESS RAMP.
 - ② UNDERGROUND UTILITY EASEMENT.



ALLIED ASSOCIATES CONSULTING ENGINEERS
STRUCTURAL, MECHANICAL, ELECTRICAL
200 WEST ST. LUBBOCK, TX 79401
(806) 745-1100

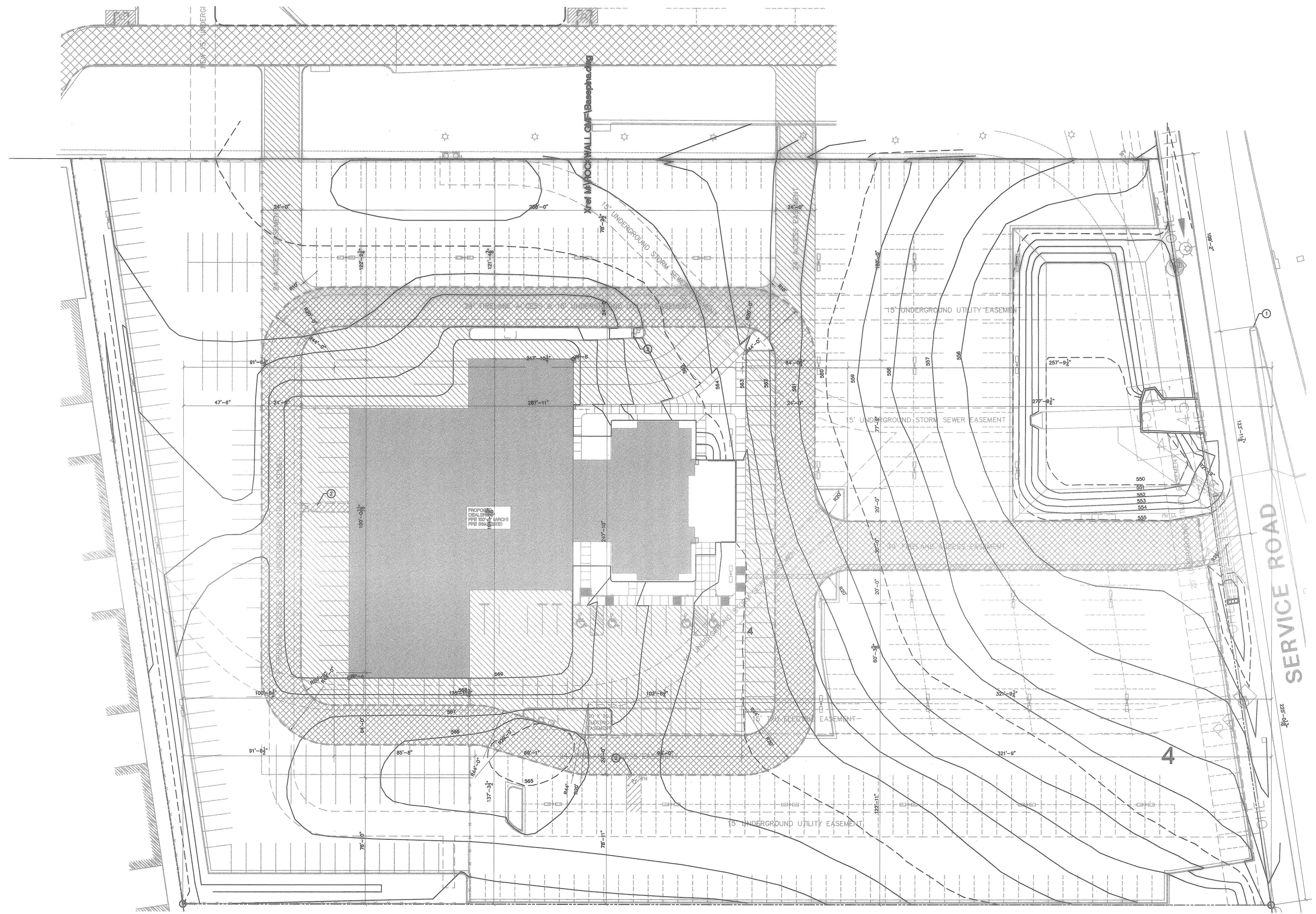
Architectural Resources
2525 74TH ST., SUITE 200
LUBBOCK, TX 79423
(806) 745-1100

PROPOSED DODGE CAR DEALERSHIP
TEXAS

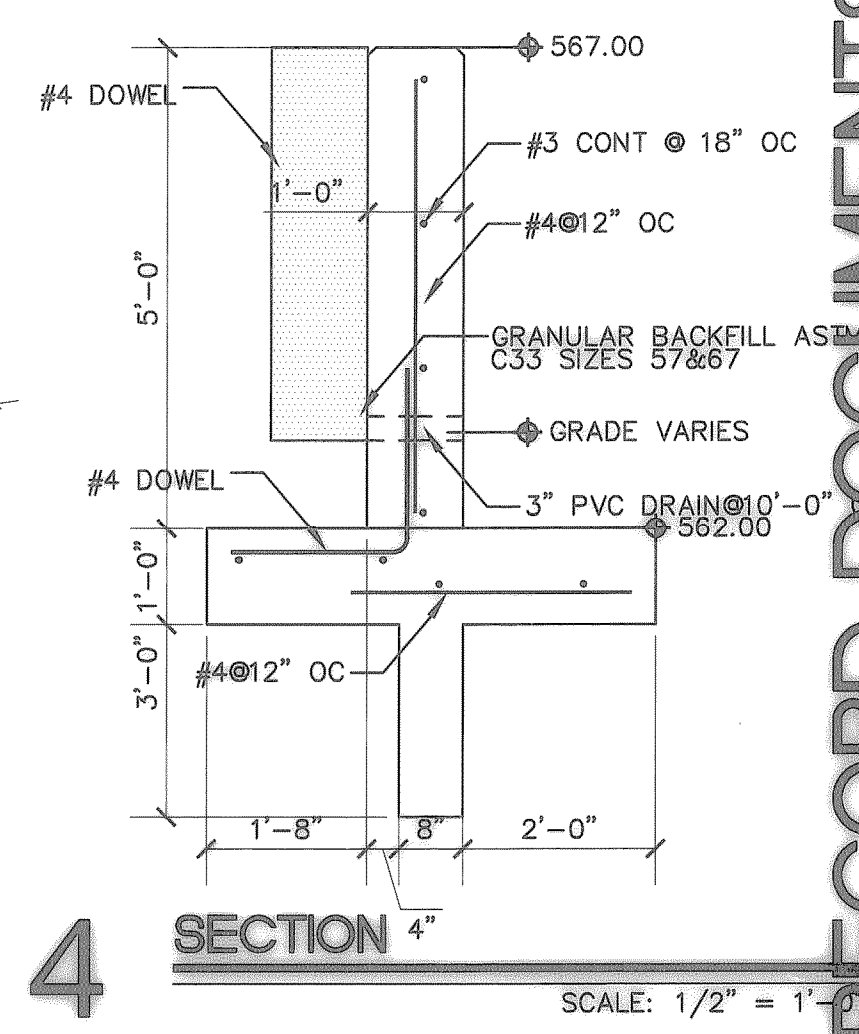
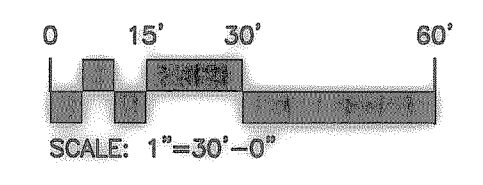
RECORD DOCUMENTS

PROJECT NO. P88
DATE: 03/19/00
REVISIONS:
DATE: 11/08/00
RECORD DOCUMENTS: 12/17/00

SHEET NO. **3**



HORIZONTAL CONTROL PLAN



4 SECTION 4"

SCALE: 1/2" = 1'-0"