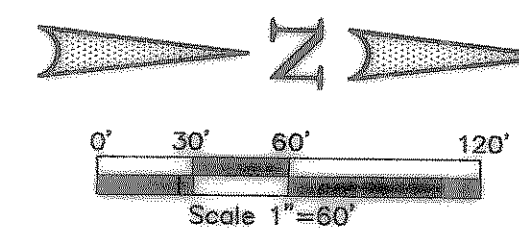
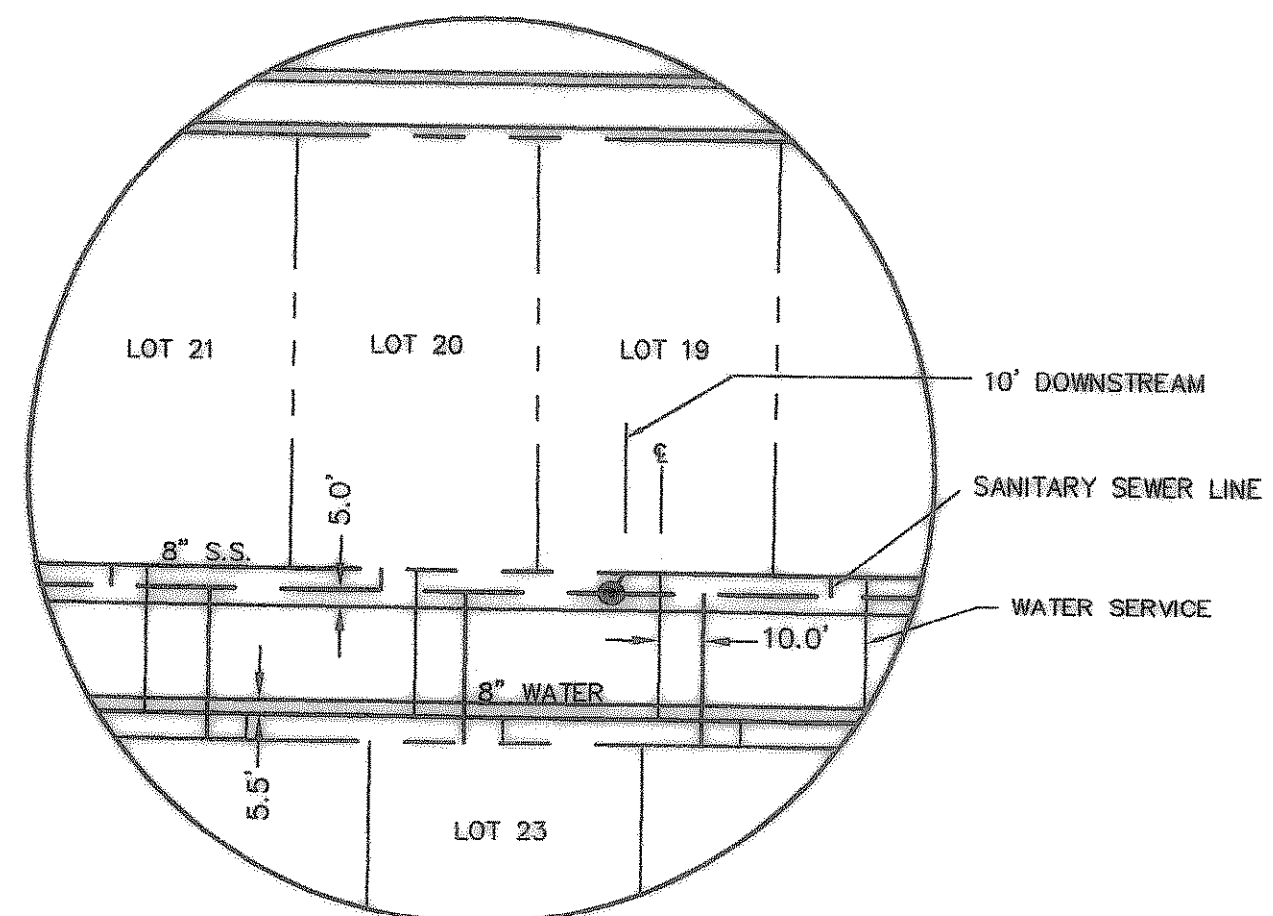
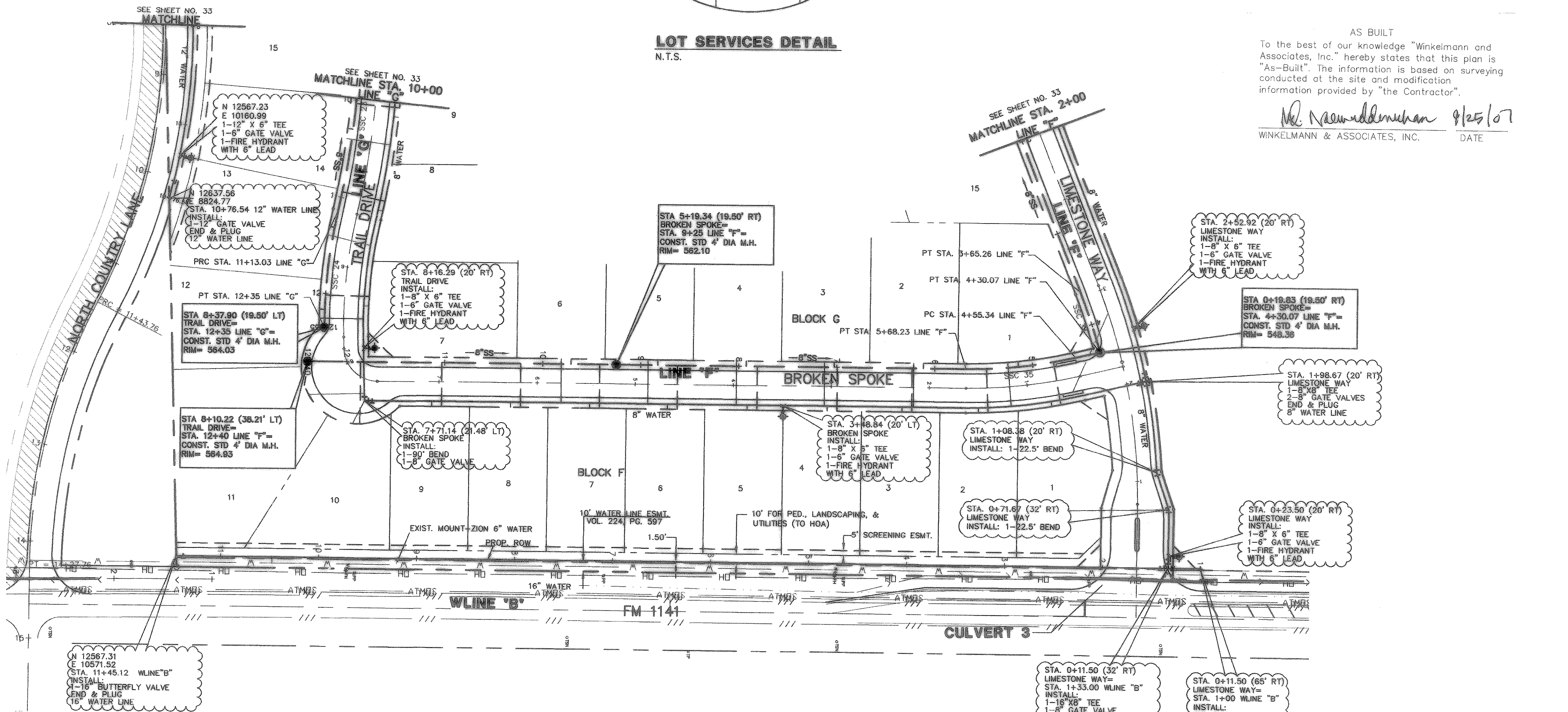


SANITARY SEWER CURVE TABLE						
CURVE	LENGTH	RADIUS	DELTA	TANGENT	CHORD	BEARING
SSC23	203.24'	798.00'	14°35'33"	102.17'	202.69'	N84°20'48"W
SSC24	121.97'	519.50'	13°27'08"	61.27'	121.69'	S83°46'35"E
SSC34	64.81'	580.50'	6°23'48"	32.44'	64.77'	S71°35'33"W
SSC35	112.88'	480.50'	13°27'37"	56.70'	112.62'	N06°33'14"W



AS BUILT  
 To the best of our knowledge "Winkelmann and Associates, Inc." hereby states that this plan is "As-Built". The information is based on surveying conducted at the site and modification information provided by "the Contractor".

*M. Naamuddin Khan* 9/25/07  
 WINKELMANN & ASSOCIATES, INC. DATE



THESE CONSTRUCTION PLANS WERE PREPARED UNDER THE RESPONSIBLE SUPERVISION OF MD. NAAM UD-DIN KHAN, REGISTERED PROFESSIONAL ENGINEER, NO. 007076.  
 THESE PLANS WERE PREPARED BY MD. NAAM UD-DIN KHAN, P.E. #87776

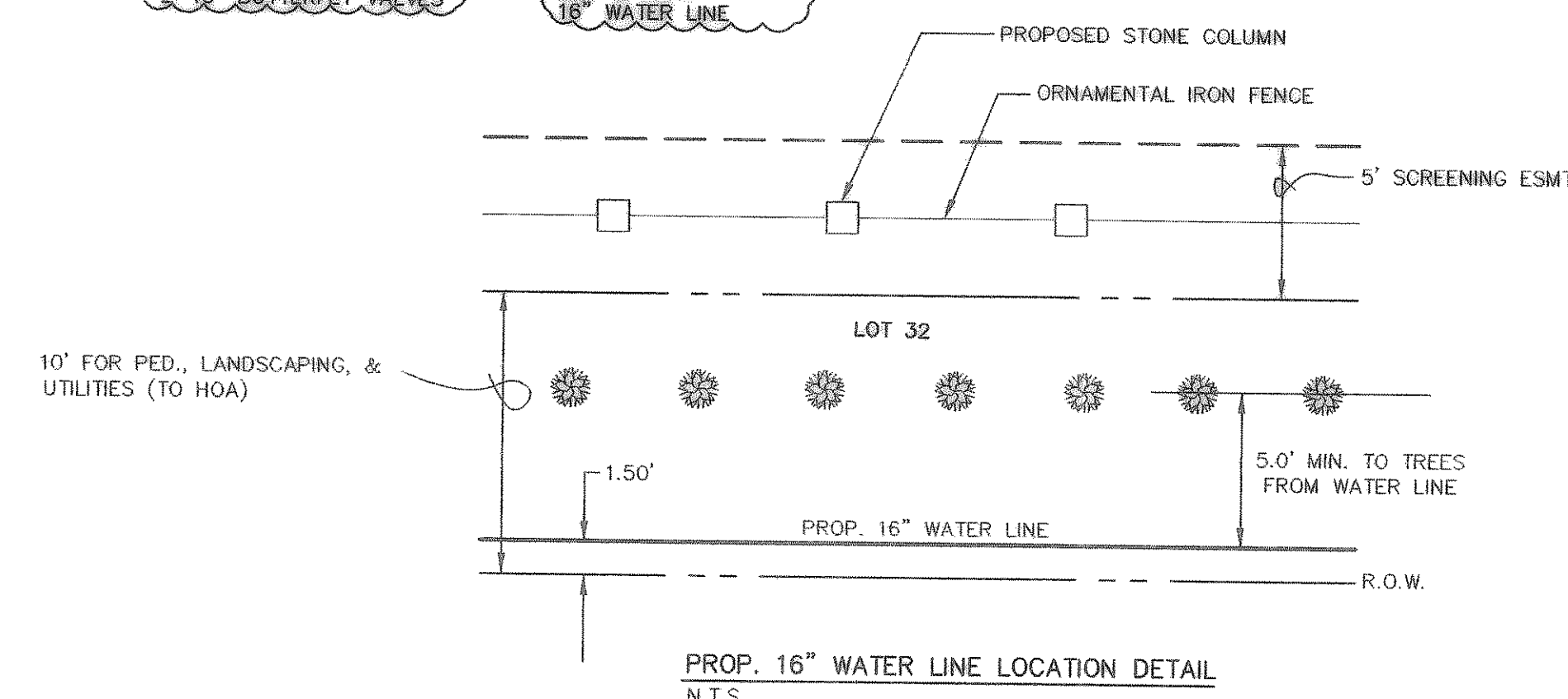
JOHN M. GLASS SURVEY ABSTRACT NO. 88  
 CITY OF ROCKWALL  
 ROCKWALL COUNTY, TEXAS  
 D. R. HORTON  
 4308 MILLER ROAD, SUITE A  
 ROWLETT, TEXAS 75088  
 214-607-4244

APPROV. REVISION DATE NO.

**Winkelmann & Associates, Inc.**  
 CONSULTING CIVIL ENGINEERS & SURVEYORS  
 6750 INDEPENDENCE DRIVE, SUITE 100  
 DALLAS, TEXAS 75230  
 (972) 482-7998 FAX

**CAUTION !!!**  
UNDERGROUND UTILITIES

EXISTING UTILITIES AND UNDERGROUND FACILITIES INDICATED ON THESE PLANS HAVE BEEN LOCATED FROM REFERENCE INFORMATION SUPPLIED BY VARIOUS OWNERS OF THE FACILITIES. THE ENGINEER DOES NOT ACCEPT THE RESPONSIBILITY FOR THE UTILITY LOCATIONS SHOWN. IT SHALL BE THE RESPONSIBILITY OF THE CONTRACTOR TO VERIFY BOTH HORIZONTALLY AND VERTICALLY THE LOCATION OF ALL EXISTING UTILITIES AND UNDERGROUND FACILITIES PRIOR TO CONSTRUCTION, TO TAKE NECESSARY PRECAUTIONS IN ORDER TO PROTECT ALL FACILITIES ENCOUNTERED, AND TO NOTIFY THE ENGINEER PROMPTLY OF ALL CONFLICTS OF THE WORK WITH EXISTING FACILITIES. THE CONTRACTOR SHALL PRESERVE AND PROTECT ALL EXISTING UTILITIES FROM DAMAGE DURING CONSTRUCTION. ANY DAMAGE BY THE CONTRACTOR TO EXISTING UTILITIES SHALL BE REPAIRED BY THE CONTRACTOR AT HIS EXPENSE. CONTACT ALL POSSIBLE UTILITY AND



**BENCHMARK 1** USGS Monument—stamped Boren 1986  
 Located approximately 1.25 miles east of Rockwall at the Rockwall Municipal Airport, in the north end of a circular grass area at the end of a taxiway.  
 ELEVATION = 574.77

**BENCHMARK 2** USGS Monument—5" cap stamped N 1495/1986  
 Located 24.6 feet west of the center of a paved road leading to the Rockwall Municipal Airport, 16.4 feet south of a utility pole with a transformer and light, 2 feet west of the north leg of a sign. Access to datum point is through a 5 inch logo cap.  
 ELEVATION = 571.44

Scale : 1"=60' Date : 09/08/06  
 Designed By : IT  
 Drawn By : IT  
 Checked By : NK  
 File : 40709NS.DWG View : WS3  
 Project No. : 40709.00

**SHEET 34 OF 45**