

NOTE:
 1. ONE SHADE TREE SHALL BE PLANTED PER 50' OF LOT FRONTAGE. (PER PD ZONING).
 2. REFER TO LANDSCAPE PLANS FOR TREE COUNT ALONG FM 1141, FM 552, NORTH COUNTRY LANE & HOA LOTS.

LEGEND
 ● TREE TO BE PLANTED
 ○ EXISTING TREE

TREES REMOVAL TABULATIONS

TREE TYPE	INCHES	REPLACEMENT INCHES
ELM	111"	111"
HACKBERRY	34" @ 50%	17"
OAK	390"	390"
TOTAL REPLACEMENT INCHES		518"

TREE PLANTING TABULATIONS

258 - 3" TREES ON LOTS	774"
LANDSCAPE PLANTING	369"
TOTAL INCHES TO BE PLANTED	1113"
TOTAL OF TREE PLANTING/CREDIT	1113"

TOTAL TREE TABULATIONS

TOTAL REPLACEMENT INCHES	518"
TOTAL INCHES TO BE PLANTED	1113"
TOTAL INCHES SURPLUS	595"

TREES TO BE REMOVED

TREES#	TYPE	INCHES	REPLACE INCHES	PROT./NONPROT.
100	OAK	8	8	PROT.
111	OAK	12	12	PROT.
136	OAK	13	13	PROT.
145	ELM	7	7	PROT.
156	OAK	7	7	PROT.
157	OAK	10	10	PROT.
160	OAK	12	12	PROT.
161	OAK	11	11	PROT.
163	OAK	8	8	PROT.
168	OAK	10	10	PROT.
232	ELM	10	10	PROT.
235	OAK	8	8	PROT.
277	OAK	8	8	PROT.
279	ELM	15	15	PROT.
281	HACKBERRY	12	6	PROT.
282	ELM	8	8	PROT.
285	OAK	10	10	PROT.
287	OAK	12	12	PROT.
303	ELM	12	12	PROT.
308	OAK	9	9	PROT.
309	OAK	10	10	PROT.
312	OAK	10	10	PROT.
320	OAK	8	8	PROT.
321	HACKBERRY	11	5.5	PROT.
327	ELM	8	8	PROT.
345	ELM	17	17	PROT.
1000	ELM	9	9	PROT.
1001	OAK	8	8	PROT.
1008	OAK	12	12	PROT.
1007	ELM	8	8	PROT.
1008	ELM	9	9	PROT.
1009	OAK	12	12	PROT.
1005	ELM	8	8	PROT.
1113	HACKBERRY	11	5.5	PROT.
1117	OAK	11	11	PROT.
1003 X1	OAK	8	8	PROT.
1003 X2	OAK	12	12	PROT.
135 X1	OAK	10	10	PROT.
135 X2	OAK	12	12	PROT.
138 X1	OAK	8	8	PROT.
138 X2	OAK	9	9	PROT.
140 X1	OAK	7	7	PROT.
140 X2	OAK	8	8	PROT.
150 X1	OAK	8	8	PROT.
150 X2	OAK	9	9	PROT.
150 X3	OAK	10	10	PROT.
150 X4	OAK	13	13	PROT.
150 X5	OAK	15	15	PROT.
164 X1	OAK	10	10	PROT.
164 X2	OAK	12	12	PROT.
264 X1	OAK	8	8	PROT.
264 X2	OAK	11	11	PROT.
264 X3	OAK	12	12	PROT.

TREES TO REMAIN

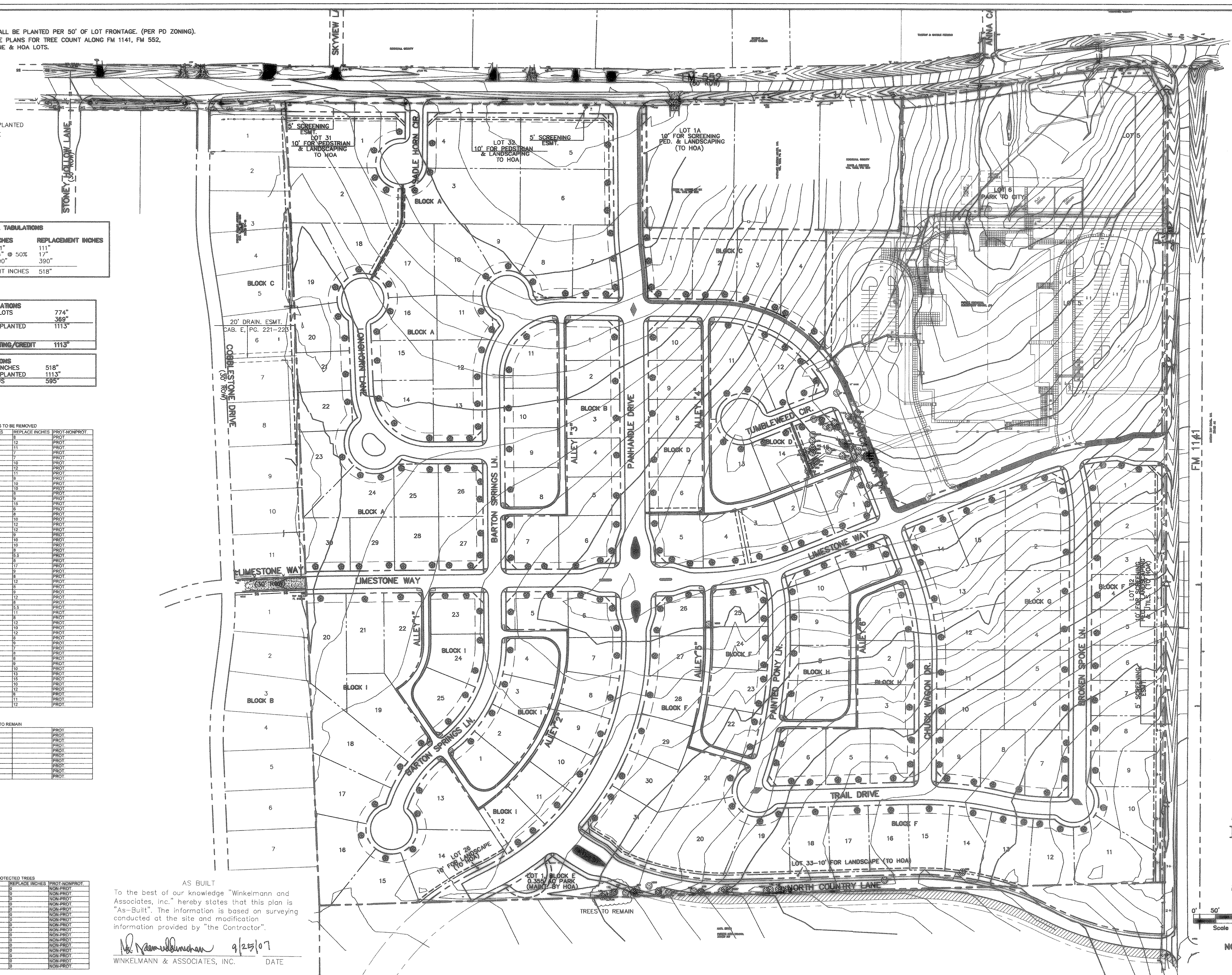
173	HACKBERRY	11		PROT.
167 X3	HACKBERRY	11		PROT.
174 X1	OAK	8		PROT.
174 X2	OAK	8		PROT.
174 X3	OAK	9		PROT.
175 X1	OAK	8		PROT.
175 X2	OAK	8		PROT.
175 X3	OAK	12		PROT.
175 X4	OAK	8		PROT.
175 X5	OAK	10		PROT.

NON-PROTECTED TREES

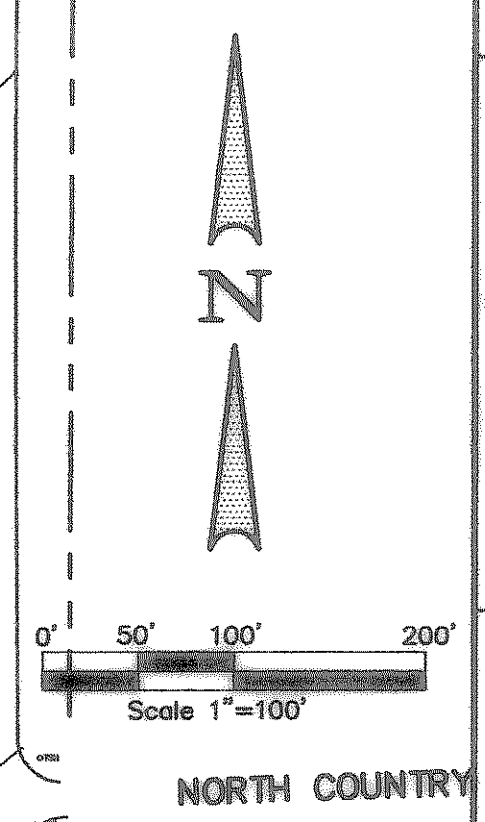
TREES#	TYPE	INCHES	REPLACE INCHES	PROT./NONPROT.
146	BOSIS DE ARC	12	0	NON-PROT.
153	BOSIS DE ARC	10	0	NON-PROT.
293	WILLOW	20	0	NON-PROT.
300	WILLOW	18	0	NON-PROT.
301	WILLOW	14	0	NON-PROT.
302	WILLOW	15	0	NON-PROT.
316	WILLOW	14	0	NON-PROT.
328	BOSIS DE ARC	10	0	NON-PROT.
349	WILLOW	11	0	NON-PROT.
1117	WILLOW	18	0	NON-PROT.
1122	WILLOW	11	0	NON-PROT.
1123	WILLOW	14	0	NON-PROT.
1125	WILLOW	11	0	NON-PROT.
1126	WILLOW	12	0	NON-PROT.
187 X1	HACKBERRY	9	0	NON-PROT.
187 X2	HACKBERRY	9	0	NON-PROT.

AS BUILT
 To the best of our knowledge "Winkelmann and Associates, Inc." hereby states that this plan is "As-Built". The information is based on surveying conducted at the site and modification information provided by "the Contractor".

Winkelmann & Associates, Inc. 9/25/07
 WINKELMANN & ASSOCIATES, INC. DATE



FM 1141



Winkelmann & Associates, Inc.
 CONSULTING CIVIL ENGINEERS & SURVEYORS
 8700 HILLCREST BLVD., SUITE 100
 DALLAS, TEXAS 75230
 (972) 981-7000 FAX

JOHN M. GLASS SURVEY ABSTRACT No. 88
 CITY OF ROCKWALL, TEXAS
 CLIENT
 JFA ROCKWALL LAND LTD.
 3000 CARLISLE # 204
 DALLAS, TEXAS 75204

TREESCAPE PLAN
DALTON RANCH
 63.222 ACRES - 142 LOTS

Scale : 1"=100' Date : 09/08/06
 Designed By : MK
 Drawn By : MK
 Checked By : FEM
 File : 40709TREE.dwg View :
 Project No. : 40709.0

SHEET
 1
OF
 1