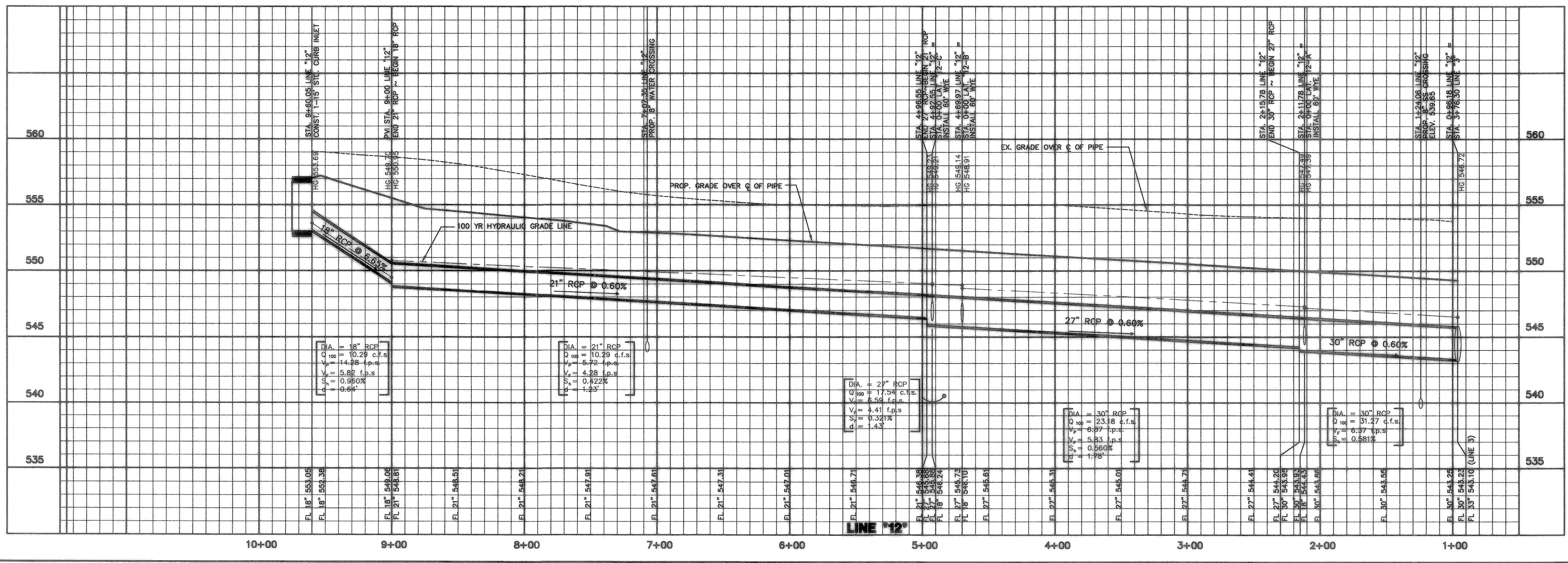


AS BUILT  
 To the best of our knowledge "Winkelman and Associates, Inc." hereby states that this plan is "As-Built". The information is based on surveying conducted at the site and modification information provided by "the Contractor".  
*W. Namuddin Khan* 9/25/07  
 WINKELMANN & ASSOCIATES, INC. DATE



NO.	DATE	REVISION	APPROV.

THESE CONSTRUCTION PLANS WERE PREPARED UNDER THE RESPONSIBLE SUPERVISION OF MD. NAIM UDDIN KHAN, REGISTERED PROFESSIONAL ENGINEER NO. 87776.  
 JOHN M. GLASS SURVEY ABSTRACT No. 88  
 CITY OF ROCKWALL, TEXAS  
 ROCKWALL COUNTY, TEXAS  
 D. R. HORTON  
 4306 MILLER ROAD, SUITE A  
 ROWLETT, TEXAS 75088  
 214-607-4244

Winkelman & Associates, Inc.  
 CONSULTING CIVIL ENGINEERS & SURVEYORS  
 6700 HILLCREST PLAZA, SUITE 100  
 DALLAS, TEXAS 75230  
 (972) 462-7900  
 (972) 462-7999 FAX

STORM SEWER PROFILES  
 LINE '6' - STA. 1+00.00 TO STA. 6+06.66  
 LINE '12' - STA. 1+00.00 TO STA. 9+60.06  
 LAT '6-A' - STA. 1+00.00 TO STA. 2+36.26

Scale: 1" = 10' Date: 08/24/06  
 Designed By: IT / RS  
 Drawn By: IT / RS  
 Checked By: NK  
 File: 4070951P.dwg View:  
 Project No.: 41502.08