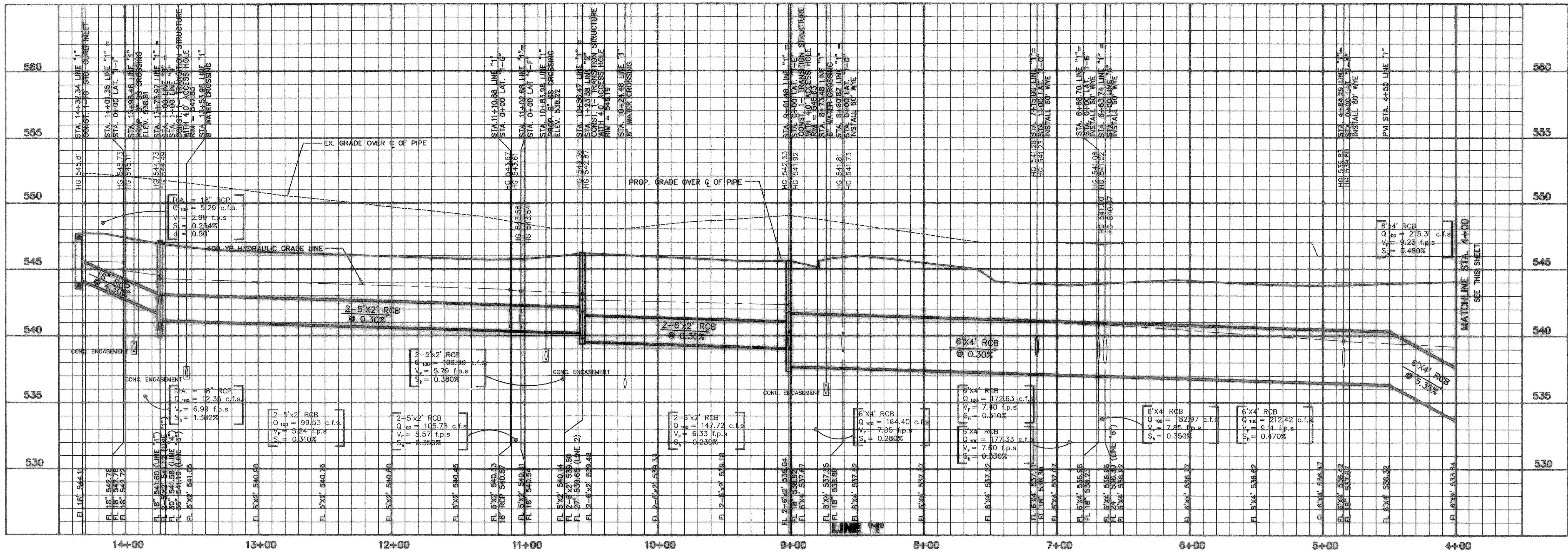


AS BUILT
 To the best of our knowledge "Winkelmann and Associates, Inc." hereby states that this plan is "As-Built". The information is based on surveying conducted at the site and modification information provided by "the Contractor".
John M. Glass 9/25/07
 WINKELMANN & ASSOCIATES, INC. DATE



BENCHMARK 1 USGS Monument—stamped Boren 1886
 Located approximately 1.25 miles east of Rockwall at the Rockwall
 end of a highway. Elevation = 574.11
BENCHMARK 2 USGS Monument—5" cap stamped N 1485/1986
 Located 24.6 feet west of the center of a paved road leading to
 a transformer and light pole, 2 feet west of the north leg of a dip.
 Access to datum point is through a 5 inch logo cap.
 ELEVATION = 516.14

Scale: 1" = 40'
 Designed By: IT / RS Date: 09/11/06
 Drawn By: IT / RS
 Checked By: NK
 File: 40709STP.dwg View:
 Project No.: 41502.0B

SHEET
 25
 OF
 45

THESE CONSTRUCTION PLANS WERE PREPARED
 UNDER THE RESPONSIBLE SUPERVISION OF
 JOHN M. GLASS, REGISTERED PROFESSIONAL
 ENGINEER NO. 87776
 JOHN M. GLASS SURVEY ABSTRACT NO. 88
 CITY OF ROCKWALL
 ROCKWALL COUNTY, TEXAS
 D R HORTON
 4306 MILLER ROAD, SUITE A
 ROWLETT, TEXAS 75088
 214-607-4244

NO. DATE REVISION APPROV.

Winkelmann & Associates, Inc.
 CONSULTING CIVIL ENGINEERS & SURVEYORS
 1000 WEST WYOMING, SUITE 100
 DALLAS, TEXAS 75201 (972) 800-2095 FAX