

AS BUILT
To the best of our knowledge "Winkelmann and Associates, Inc." hereby states that this plan is "As-Built". The information is based on surveying conducted at the site and modification information provided by "the Contractor".

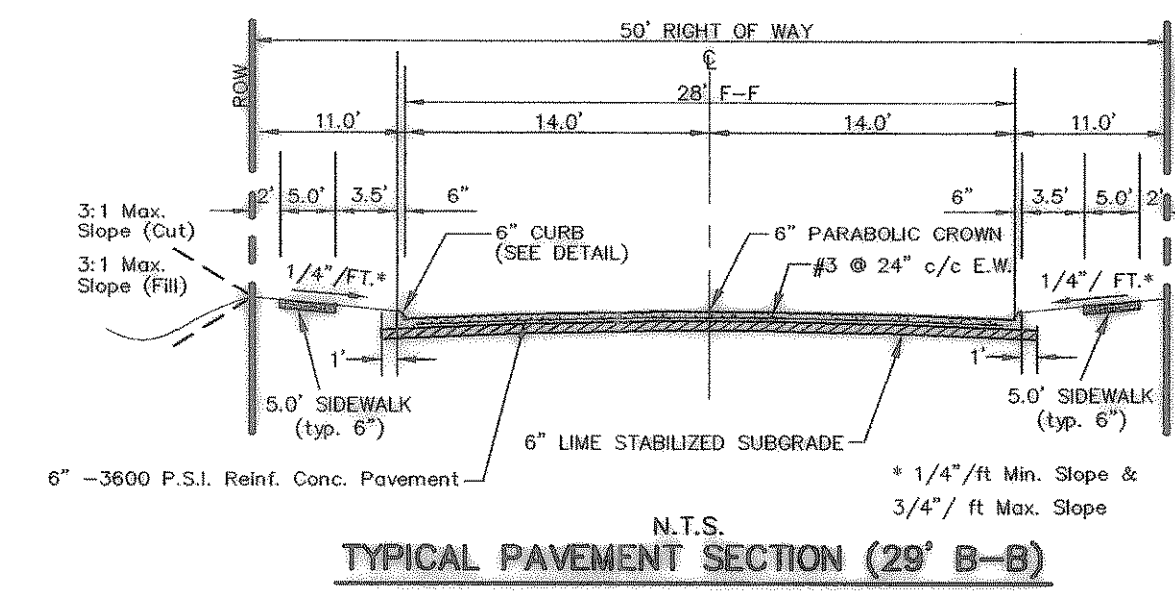
W. Winkelmann 9/25/07
WINKELMANN & ASSOCIATES, INC. DATE

NOTE:

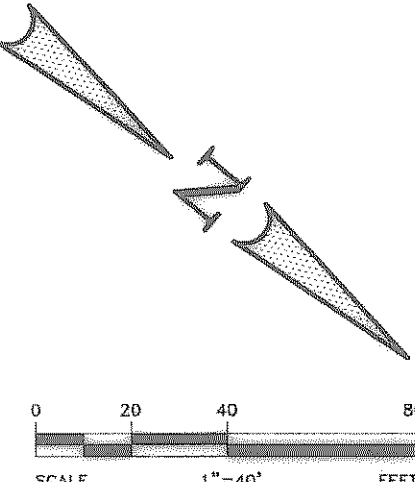
- 1) PAVEMENT SHALL CONSIST OF 6" 3600 P.S.I. REINFORCED CONCRETE AND 6" LIME-STABILIZED SUBGRADE WITH 6" PARABOLIC CROWN FOR 28' STREETS.
- 2) PAVEMENT SHALL CONSIST OF 8" 3600 P.S.I. REINFORCED CONCRETE AND 6" LIME-STABILIZED SUBGRADE WITH 7" PARABOLIC CROWN FOR 44' STREETS.
- 3) PAVEMENT FOR ALLEYS SHALL CONSIST OF 4000 P.S.I. REINFORCED CONCRETE AND 6" LIME-STABILIZED SUBGRADE WITH 5" INVERT. TYPICAL ALLEY SECTION WILL BE 7'-5"-7".
- 4) CONTRACTOR TO RUN LIME SERIES BEFORE CONSTRUCTION.

STREET CENTER LINE CURVE TABLE

CURVE	RADIUS	DELTA	TANGENT	LENGTH	CHORD	BEARING
C42	817.50'	14°35'33"	104.67'	208.21'	207.65'	N84°20'48"W
C43	34.50'	110°35'26"	49.82'	66.59'	56.72'	S36°20'52"E
C44	922.50'	19°26'34"	158.04'	313.04'	311.54'	N08°13'34"E
C45	250.00'	15°18'07"	33.58'	66.77'	66.57'	N08°08'47"W

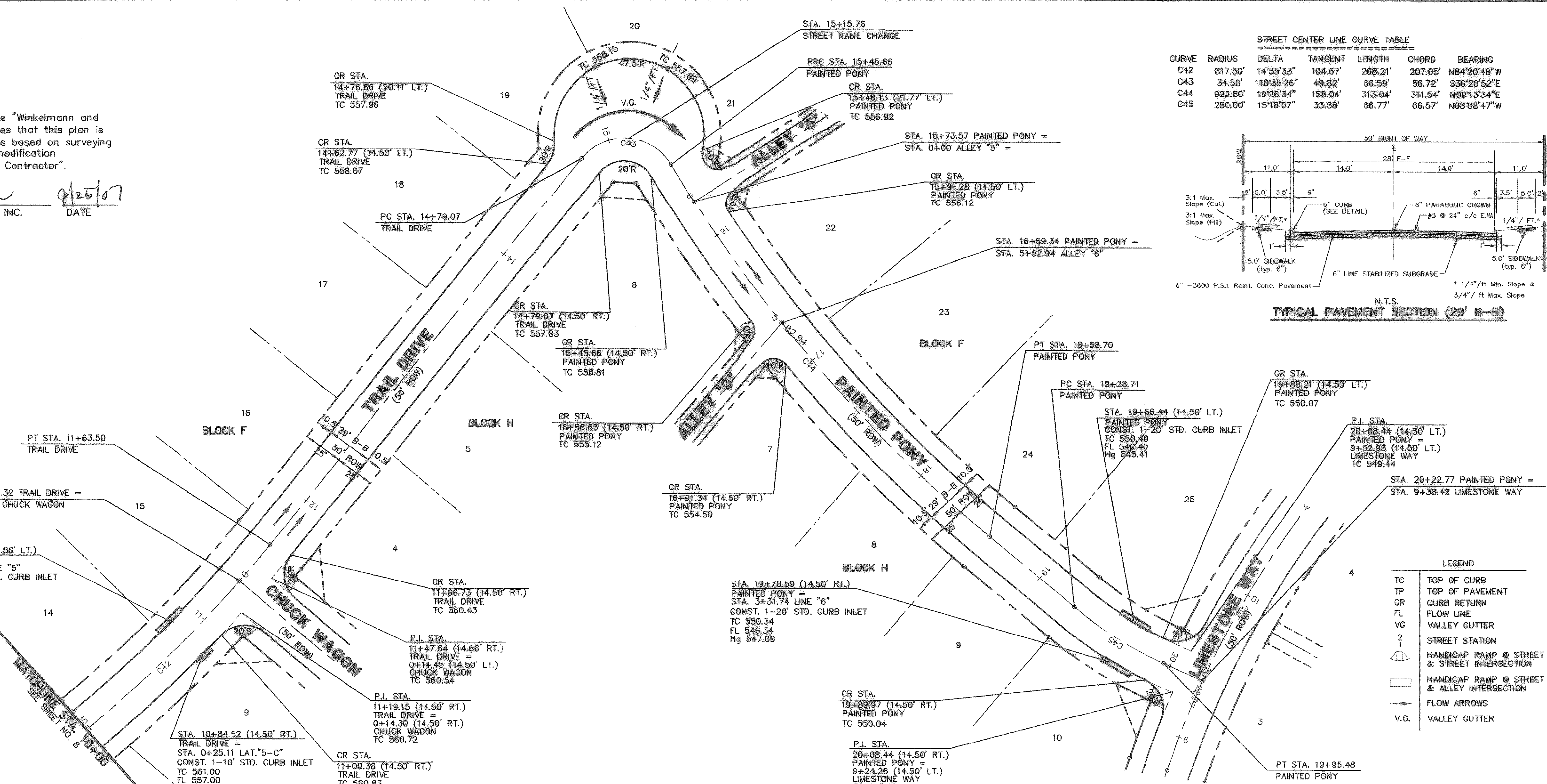


6" - 3600 P.S.I. Reinf. Conc. Pavement
6" LIME STABILIZED SUBGRADE
1/4" / Ft. Min. Slope & 3/4" / Ft. Max. Slope
N.T.S.



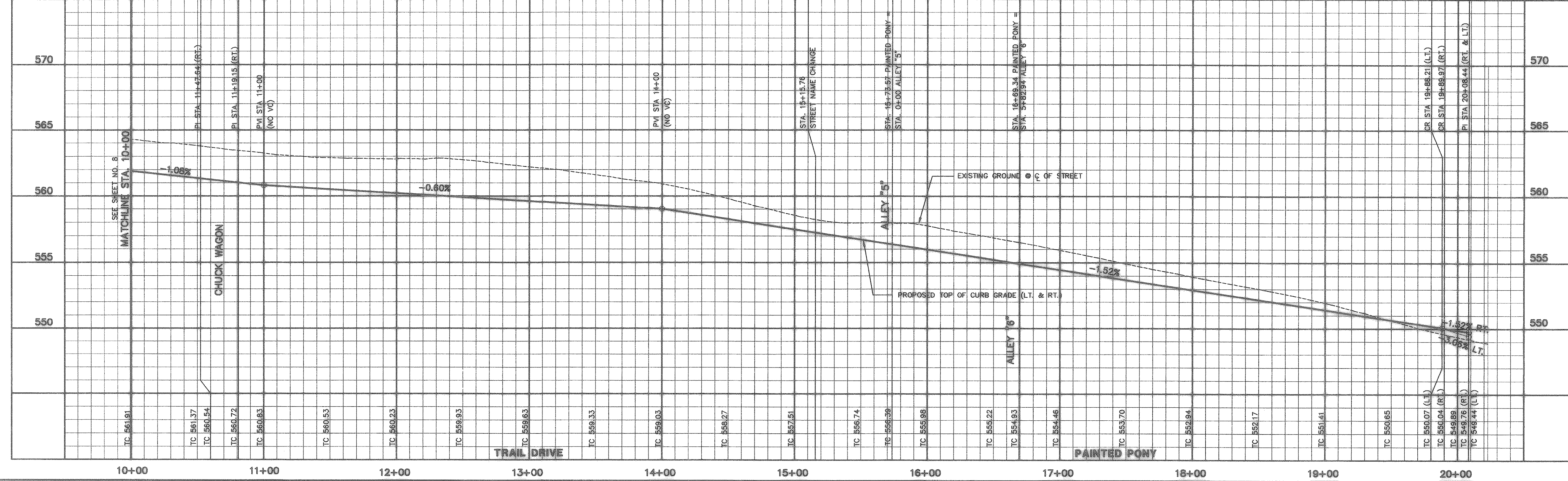
BENCHMARK 1 USGS Monument—stamped Boren 1986
Located approximately 1.25 miles east of Rockwall at the Rockwall Municipal Airport, in the north end of a circular grass area at the end of a driveway.
ELEVATION = 574.77

BENCHMARK 2 USGS Monument—5" cap stamped N 1495/1986
Located 24.6 feet west of the center of a paved road leading to the Rockwall Municipal Airport, 16.4 feet south of a utility pole with a transformer and light, 2 feet west of the north leg of a sign. Access to datum point is through a 5 inch logo cap.
ELEVATION = 567.44



LEGEND

- TC TOP OF CURB
- TP TOP OF PAVEMENT
- CR CURB RETURN
- FL FLOW LINE
- VG VALLEY GUTTER
- STREET STATION
- 2 STREET INTERSECTION
- HANDICAP RAMP @ STREET & STREET INTERSECTION
- HANDICAP RAMP @ STREET & ALLEY INTERSECTION
- FLOW ARROWS
- V.G. VALLEY GUTTER



APPROVE: _____
REVISION: _____
DATE: _____
NO. _____

THESE CONSTRUCTION PLANS WERE PREPARED UNDER THE RESPONSIBLE SUPERVISION OF JOHN M. GLASS SURVEY ABSTRACT NO. 88
CITY OF ROCKWALL
ROCKWALL COUNTY, TEXAS
D. R. HORTON
4308 MILLER ROAD, SUITE A
ROWLETT, TEXAS 75088
214-607-4244

THE SEAL APPEARING ON THIS DOCUMENT WAS AUTHORIZED BY MD. NAIM UDDIN KHAN, P.E. #87776

W. Winkelmann 9/25/07

PAVING PLAN & PROFILE
TRAIL DRIVE STA. 10+00 TO 15+15.76
PAINTED PONY STA. 15+15.76 TO 20+22.77

Scale: 1" = 20' Date: 09/08/06
Designed By: IT / RS
Drawn By: IT / RS
Checked By: NK
File: 40709PAV.DWG View: P07
Project No.: 40709.00

45