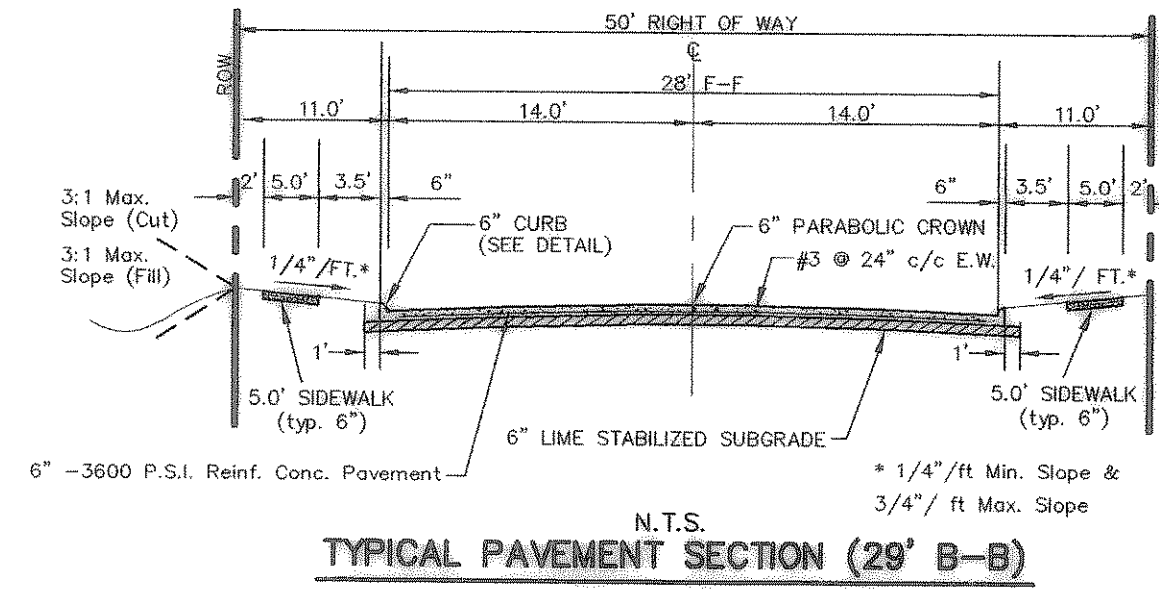


AS BUILT  
To the best of our knowledge "Winkelmann and Associates, Inc." hereby states that this plan is "As-Built". The information is based on surveying conducted at the site and modification information provided by "the Contractor".

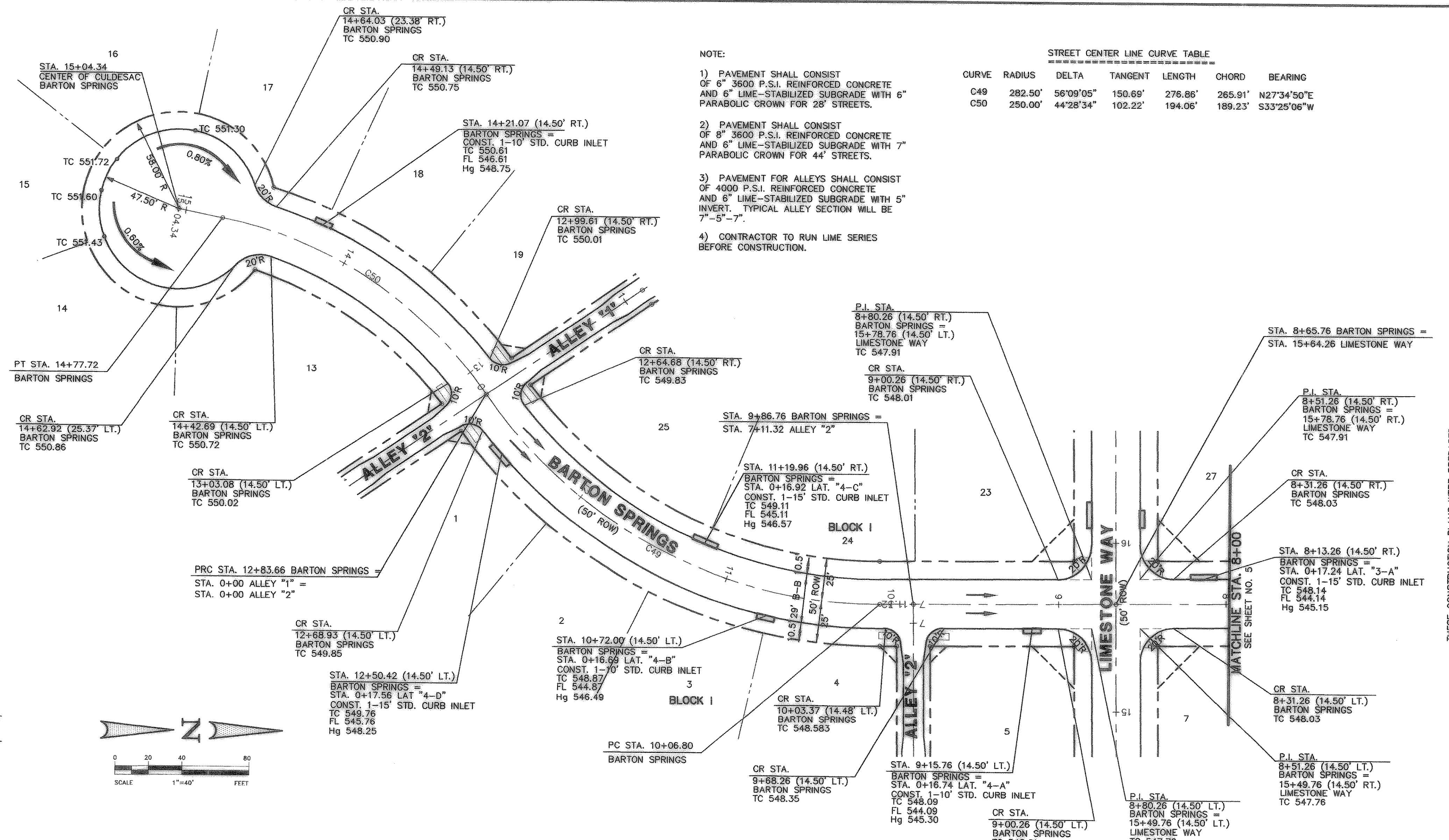
*W. Winkelmann* 9/25/07  
WINKELMANN & ASSOCIATES, INC. DATE



- LEGEND
- TC TOP OF CURB
  - TP TOP OF PAVEMENT
  - CR CURB RETURN
  - FL FLOW LINE
  - ST STREET STATION
  - HANDICAP RAMP @ STREET & STREET INTERSECTION
  - HANDICAP RAMP @ STREET & ALLEY INTERSECTION
  - FLOW ARROWS

**BENCHMARK 1** USGS Monument—stamped Boren 1986  
Located approximately 1.25 miles east of Rockwall at the Rockwall Municipal Airport, in the north end of a circular grass area at the end of a taxiway.  
ELEVATION = 574.77

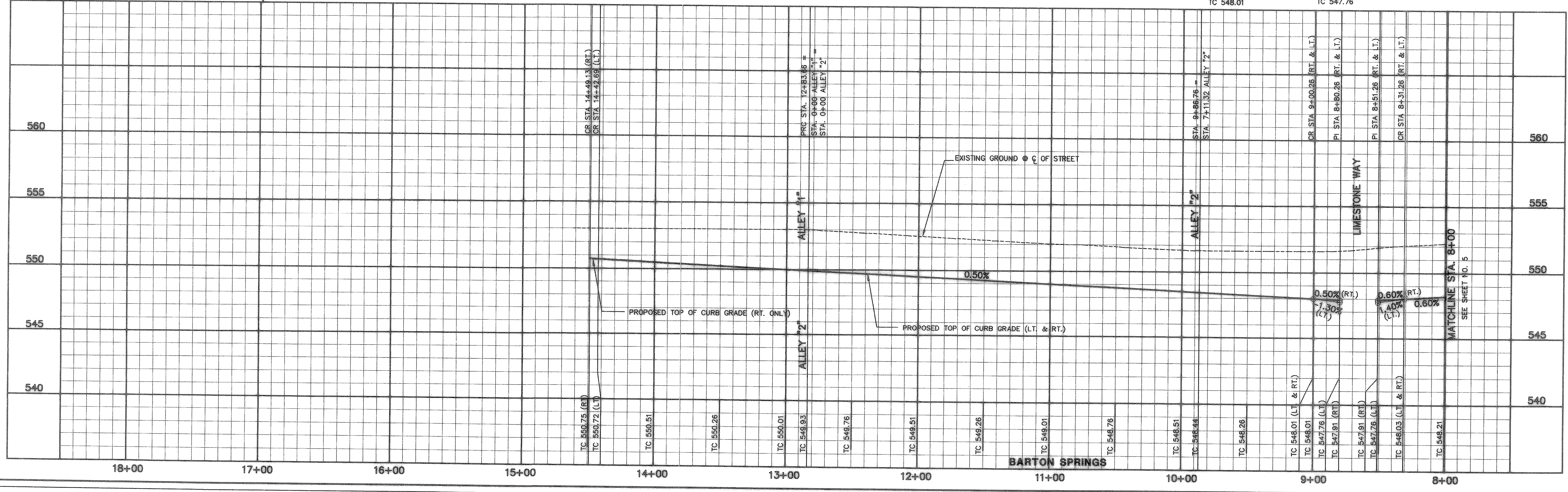
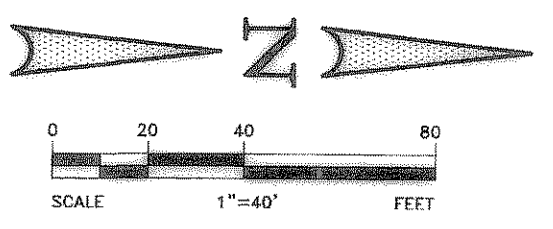
**BENCHMARK 2** USGS Monument—5" cap stamped N 1495/1986  
Located 24.6 feet west of the center of a paved road leading to the Rockwall Municipal Airport, 16.4 feet south of a utility pole with a transformer and light, 2 feet west of the north leg of a sign. Access to datum point is through a 5 inch logo cap.  
ELEVATION = 567.44



NOTE:

- PAVEMENT SHALL CONSIST OF 6" 3600 P.S.I. REINFORCED CONCRETE AND 6" LIME-STABILIZED SUBGRADE WITH 6" PARABOLIC CROWN FOR 28' STREETS.
- PAVEMENT SHALL CONSIST OF 8" 3600 P.S.I. REINFORCED CONCRETE AND 6" LIME-STABILIZED SUBGRADE WITH 7" PARABOLIC CROWN FOR 44' STREETS.
- PAVEMENT FOR ALLEYS SHALL CONSIST OF 4000 P.S.I. REINFORCED CONCRETE AND 6" LIME-STABILIZED SUBGRADE WITH 5" INVERT. TYPICAL ALLEY SECTION WILL BE 7"-5"-7".
- CONTRACTOR TO RUN LIME SERIES BEFORE CONSTRUCTION.

STREET CENTER LINE CURVE TABLE						
CURVE	RADIUS	DELTA	TANGENT	LENGTH	CHORD	BEARING
C49	282.50'	56°09'05"	150.69'	276.86'	265.91'	N27°34'50"E
C50	250.00'	44°28'34"	102.22'	194.06'	189.23'	S33°25'06"W



NO.	DATE	REVISION	APPROVAL

THESE CONSTRUCTION PLANS WERE PREPARED AND THE RESPONSIBLE SUPERVISION OF THE WORK IS BY THE REGISTERED PROFESSIONAL ENGINEER NO. 87776.

*W. Winkelmann* 9/25/07

THE SEAL APPEARING ON THIS DOCUMENT WAS AUTHORIZED BY MD. NAIM UDDIN KHAN, P.E. #87776

JOHN M. GLASS SURVEY ABSTRACT No. 88  
CITY OF ROCKWALL  
ROCKWALL COUNTY, TEXAS  
D R HORTON  
4306 MILLER ROAD, SUITE A  
ROWLETT, TEXAS 75088  
214-607-4244

**PAVING PLAN & PROFILE  
BARTON SPRINGS  
STA. 8+00 TO 15+04.34**

Scale: 1" = 40'  
Date: 08/24/06  
Designed By: IT / RS  
Drawn By: IT / RS  
Checked By: NK  
File: 40709PAV.DWG View: P04  
Project No.: 40709.00

**SHEET  
6  
OF  
45**

