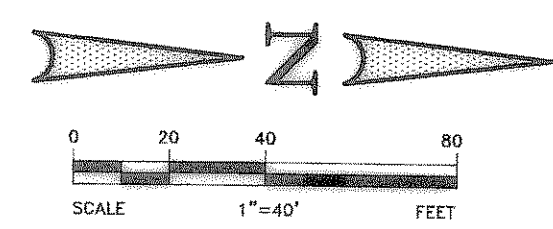
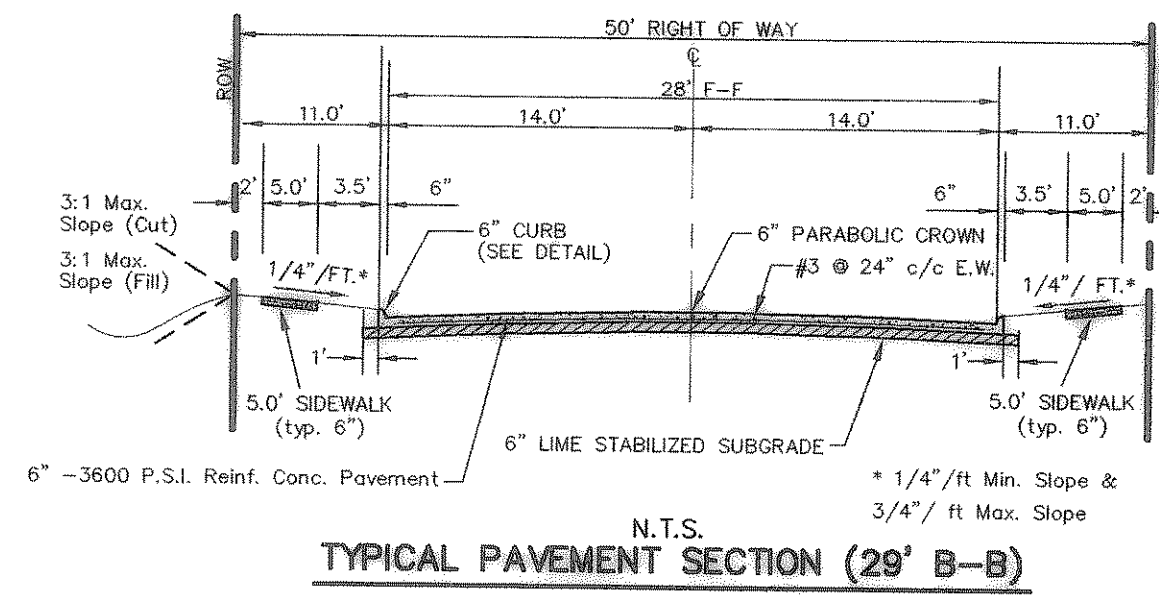


AS BUILT
To the best of our knowledge "Winkelmann and Associates, Inc." hereby states that this plan is "As-Built". The information is based on surveying conducted at the site and modification information provided by "the Contractor".

M. N. Uddin Khan 9/25/07
WINKELMANN & ASSOCIATES, INC. DATE



LEGEND

| | |
|------|--|
| TC | TOP OF CURB |
| TP | TOP OF PAVEMENT |
| CR | CURB RETURN |
| FL | FLOW LINE |
| 2 | STREET STATION |
| 1 | HANDICAP RAMP @ STREET & STREET INTERSECTION |
| □ | HANDICAP RAMP @ STREET & ALLEY INTERSECTION |
| → | FLOW ARROWS |
| V.G. | VALLEY GUTTER |

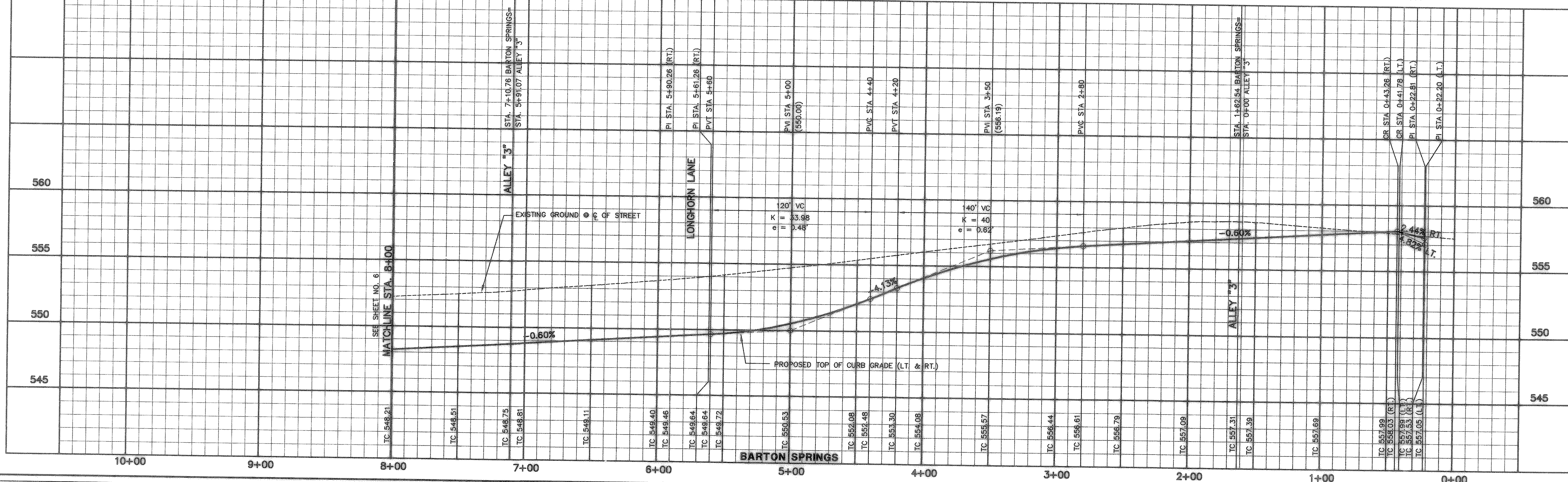
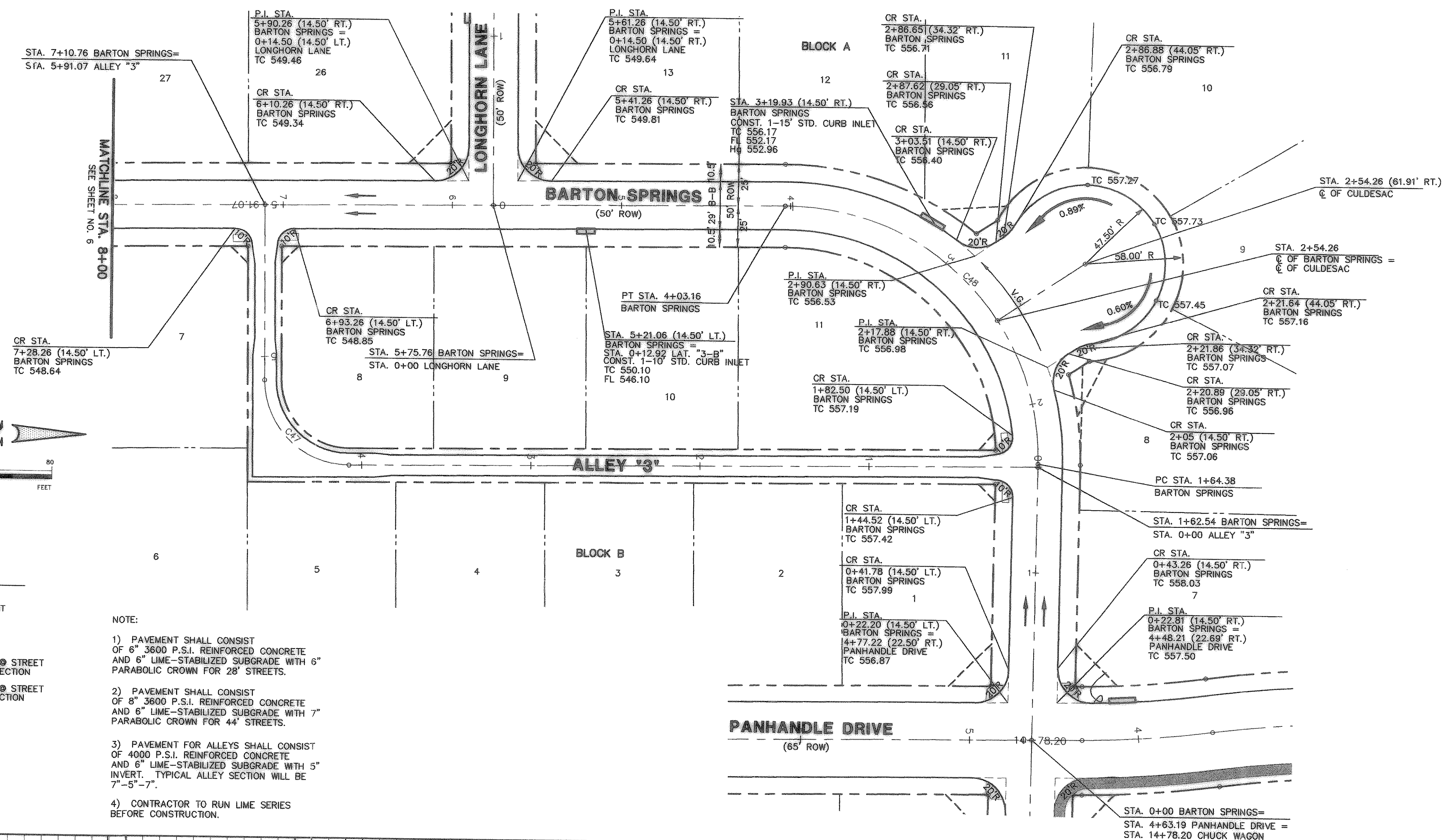
- NOTE:
- 1) PAVEMENT SHALL CONSIST OF 6" 3600 P.S.I. REINFORCED CONCRETE AND 6" LIME-STABILIZED SUBGRADE WITH 6" PARABOLIC CROWN FOR 28' STREETS.
 - 2) PAVEMENT SHALL CONSIST OF 8" 3600 P.S.I. REINFORCED CONCRETE AND 6" LIME-STABILIZED SUBGRADE WITH 7" PARABOLIC CROWN FOR 44' STREETS.
 - 3) PAVEMENT FOR ALLEYS SHALL CONSIST OF 4000 P.S.I. REINFORCED CONCRETE AND 6" LIME-STABILIZED SUBGRADE WITH 5" INVERT. TYPICAL ALLEY SECTION WILL BE 7'-5"-7".
 - 4) CONTRACTOR TO RUN LIME SERIES BEFORE CONSTRUCTION.

STREET CENTER LINE CURVE TABLE

| CURVE | RADIUS | DELTA | TANGENT | LENGTH | CHORD | BEARING |
|-------|---------|-----------|---------|---------|---------|-------------|
| C47 | 50.00' | 90°00'00" | 50.00' | 78.54' | 70.71' | N44°30'17"E |
| C48 | 150.00' | 91°12'14" | 153.19' | 238.77' | 214.35' | S45°06'24"W |

BENCHMARK 1 USGS Monument—stamped Boren 1986
Located approximately 1.25 miles east of Rockwall at the Rockwall Municipal Airport, in the north end of a circular grass area at the end of a taxiway.
ELEVATION = 574.77

BENCHMARK 2 USGS Monument—5" cap stamped N 1495/1986
Located 24.6 feet west of the center of a paved road leading to the Rockwall Municipal Airport, 16.4 feet south of a utility pole with a transformer and light, 2 feet west of the north leg of a sign. Access to datum point is through a 5 inch logo cap.
ELEVATION = 567.44



APPROVED

REVISION

NO. DATE

DATE 9/25/07

Winkelmann & Associates, Inc.
CONSULTING CIVIL ENGINEERS & SURVEYORS
6750 HILDCREST PLAZA, SUITE 100
DALLAS, TEXAS 75250
(972) 495-7898 FAX

THESE CONSTRUCTION PLANS WERE PREPARED UNDER THE RESPONSIBLE SUPERVISION OF ENGINEER MD. NAIM UDDIN KHAN, REGISTERED PROFESSIONAL ENGINEER NO. 87776

THE SEAL APPEARING ON THIS DOCUMENT WAS AUTHORIZED BY MD. NAIM UDDIN KHAN, P.E. #87776

JOHN M. GLASS SURVEY ABSTRACT No. 88
CITY OF ROCKWALL,
ROCKWALL COUNTY, TEXAS
D. R. HORTON
4306 MILLER ROAD, SUITE A
ROWLETT, TEXAS 75088
214-607-4244

PAVING PLAN & PROFILE
BARTON SPRINGS
STA. 0+00 TO 8+00

Scale: 1"=40' Date: 08/24/06
Designed By: IT / RS
Drawn By: IT / RS
Checked By: NK
File: 40709PAV.DWG View: P03
Project No.: 40709.00

SHEET
5
OF
45