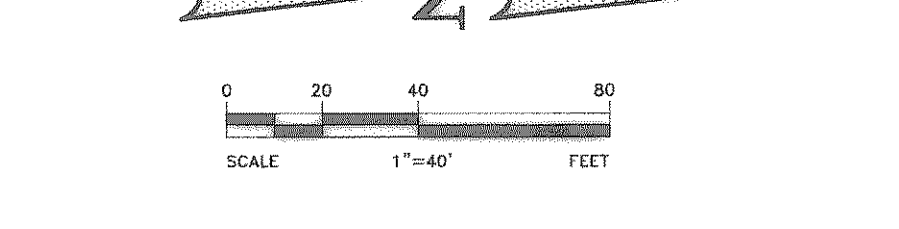
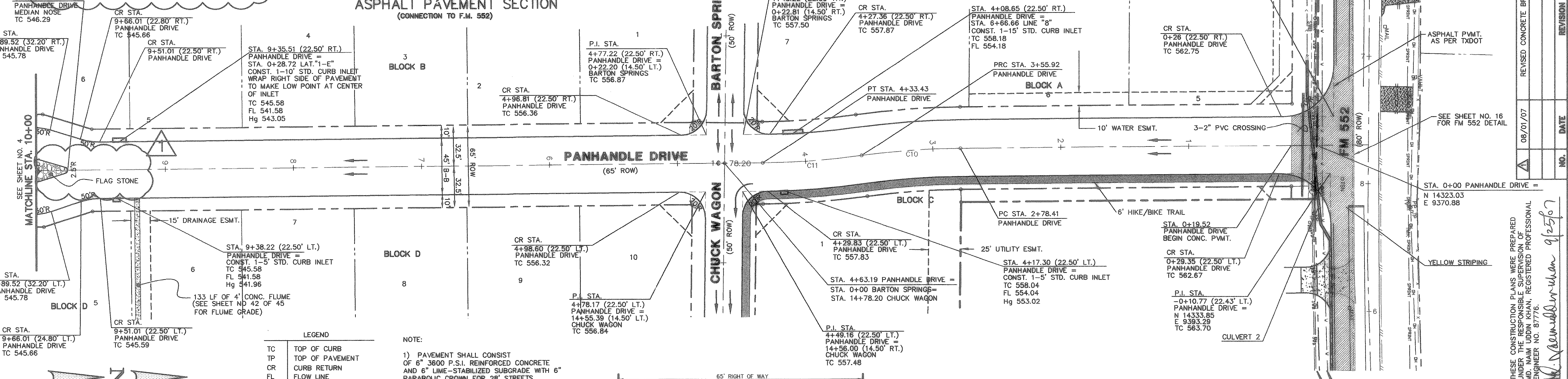
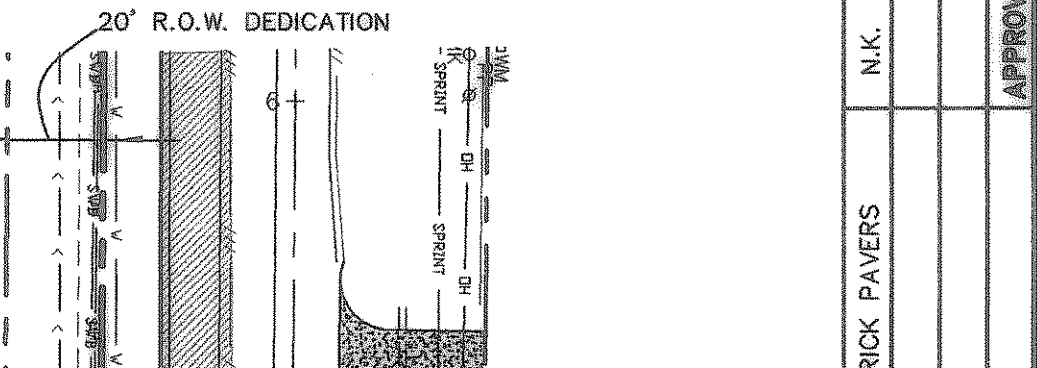
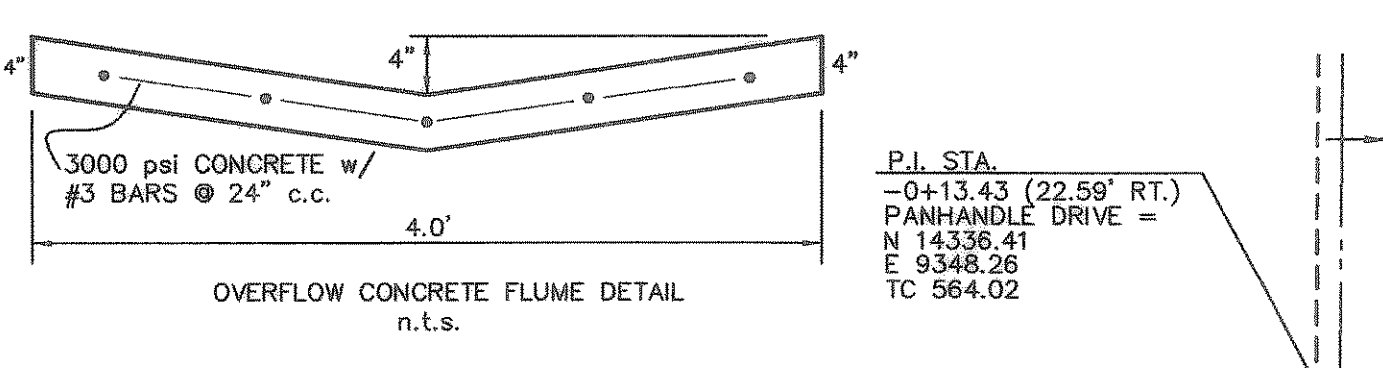


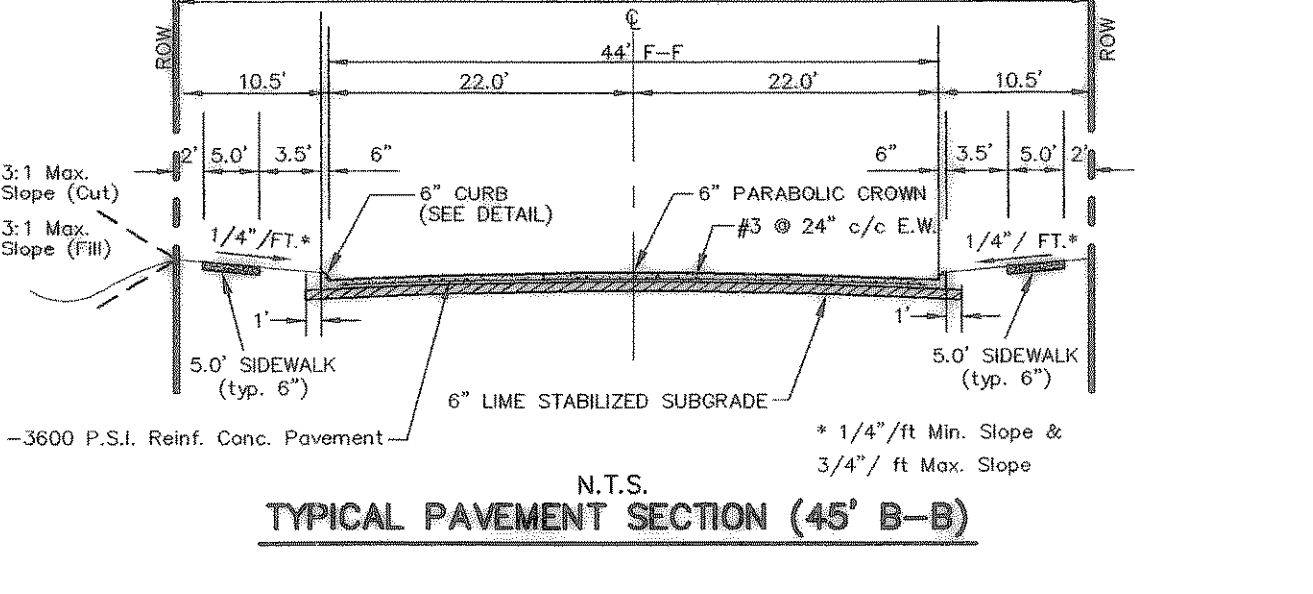
STREET CENTER LINE CURVE TABLE

CURVE	RADIUS	DELTA	TANGENT	LENGTH	CHORD	BEARING
C-10	600.00'	72°4'07"	38.81'	77.51'	77.46'	S0411°47'E
C-11	600.00'	72°4'07"	38.81'	77.51'	77.46'	N0411°47'W



- LEGEND**
- TC TOP OF CURB
 - TP TOP OF PAVEMENT
 - CR CURB RETURN
 - FL FLOW LINE
 - 2 STREET STATION
 - 1 HANDICAP RAMP @ STREET & STREET INTERSECTION
 - 1 HANDICAP RAMP @ STREET & ALLEY INTERSECTION
 - 1 FLOW ARROWS
 - 1 EXIST. ASPHALT PAVING
 - 1 ASPHALT PAVEMENT AS PER TXDOT STANDARD
 - PP POWER POLE
 - TSN TRAFFIC SIGNS
 - WM WATER METER
 - OH OVERHEAD POWER LINES
 - SWB SOUTH WESTERN BELL
 - W WATER LINE

- NOTE:**
- PAVEMENT SHALL CONSIST OF 6" 3600 P.S.I. REINFORCED CONCRETE AND 6" LIME-STABILIZED SUBGRADE WITH 6" PARABOLIC CROWN FOR 28' STREETS.
 - PAVEMENT SHALL CONSIST OF 6" 3600 P.S.I. REINFORCED CONCRETE AND 6" LIME-STABILIZED SUBGRADE WITH 7" PARABOLIC CROWN FOR 44' STREETS.
 - PAVEMENT FOR ALLEYS SHALL CONSIST OF 4000 P.S.I. REINFORCED CONCRETE AND 5" LIME-STABILIZED SUBGRADE WITH 5" INVERT. TYPICAL ALLEY SECTION WILL BE 7'-5" W.
 - CONTRACTOR TO RUN LIME SERIES BEFORE CONSTRUCTION.



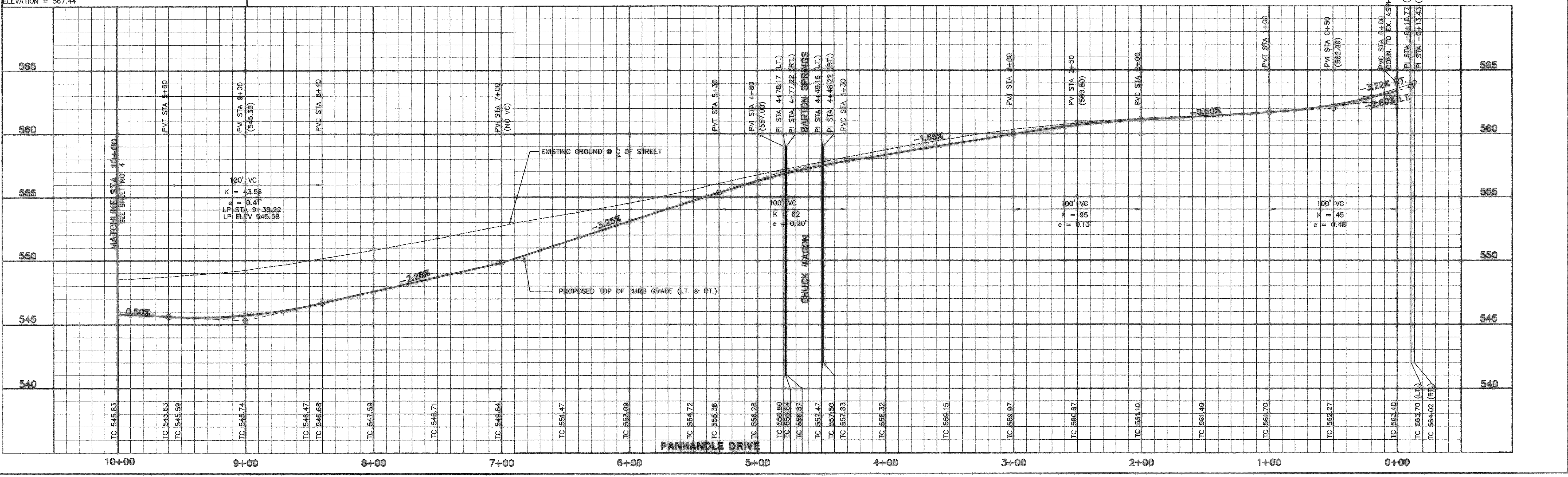
BENCHMARK 1 USGS Monument—stamped Boren 1986
 Located approximately 1.25 miles east of Rockwall at the Rockwall Municipal Airport, in the north end of a circular grass area at the end of a driveway.
 ELEVATION = 574.77

BENCHMARK 2 USGS Monument—5" cap stamped N 1495/1986
 Located 24.6 feet west of the center of a paved road leading to the Rockwall Municipal Airport, 16.4 feet south of a utility pole with a transformer and light, 2 feet west of the north leg of a sign. Access to datum point is through a 5 inch logo cap.
 ELEVATION = 567.44

AS BUILT
 To the best of our knowledge "Winkelmann and Associates, Inc." hereby states that this plan is "As-Built". The information is based on surveying conducted at the site and modification information provided by "the Contractor".

W. Winkelmann 9/25/07
 WINKELMANN & ASSOCIATES, INC. DATE

WARNING!!!
 EXISTING WATER LINE/UTILITIES; CONTRACTOR TO VERIFY LOCATION AND DEPTH OF EXISTING UTILITIES PRIOR TO CONSTRUCTION.

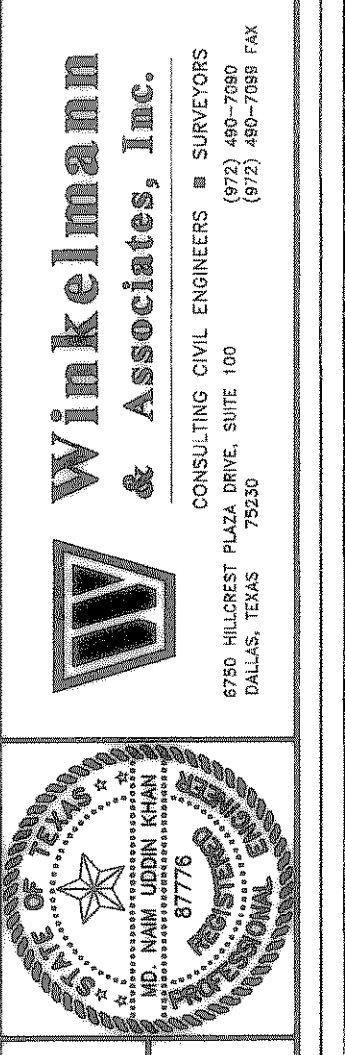


NO.	DATE	REVISION	APPROVAL
1	08/01/07	REVISED CONCRETE BRICK PAVERS	N.K.

THESE CONSTRUCTION PLANS WERE PREPARED BY ME OR UNDER MY CLOSE PERSONAL SUPERVISION AND I AM A REGISTERED PROFESSIONAL ENGINEER NO. 87776.

W. Winkelmann 9/25/07
 JOHN M. GLASS SURVEY ABSTRACT No. 88
 ROCKWALL COUNTY, TEXAS
 D R HORTON
 4306 MILLER ROAD, SUITE A
 ROWLETT, TEXAS 75088
 214-807-4244

THE SEAL APPEARING ON THIS DOCUMENT WAS AUTHORIZED BY MD. NAIM UDDIN KHAN, P.E. #87776



PAVING PLAN & PROFILE
PANHANDLE DRIVE
STA. -0+18.43 TO 10+00

Scale: 1" = 40'
 Date: 09/05/06
 Designed By: IT / RS
 Drawn By: IT / RS
 Checked By: NK
 File: 40709PAVDWG View: P01
 Project No.: 40706.00

SHEET
3
OF
45