

- NOTE:
- 1) PAVEMENT SHALL CONSIST OF 6" 3600 P.S.I. REINFORCED CONCRETE AND 6" LIME-STABILIZED SUBGRADE WITH 6" PARABOLIC CROWN FOR 28' STREETS.
  - 2) PAVEMENT SHALL CONSIST OF 6" 3600 P.S.I. REINFORCED CONCRETE AND 6" LIME-STABILIZED SUBGRADE WITH 7" PARABOLIC CROWN FOR 44' STREETS.
  - 3) PAVEMENT FOR ALLEYS SHALL CONSIST OF 4000 P.S.I. REINFORCED CONCRETE AND 6" LIME-STABILIZED SUBGRADE WITH 5" INVERT. TYPICAL ALLEY SECTION WILL BE 7'-5"-7'.
  - 4) CONTRACTOR TO RUN LIME SERIES BEFORE CONSTRUCTION.

ALLEY CENTER LINE CURVE TABLE

| CURVE | RADIUS | DELTA     | TANGENT | LENGTH | CHORD  | BEARING     |
|-------|--------|-----------|---------|--------|--------|-------------|
| C47   | 50.00' | 90°00'00" | 50.00'  | 78.54' | 70.71' | N44°30'17"E |
| C53   | 50.00' | 94°26'02" | 54.03'  | 82.41' | 73.39' | N43°16'42"W |

- LEGEND
- TC TOP OF CURB
  - TP TOP OF PAVEMENT
  - CR CURB RETURN
  - FL FLOW LINE
  - 2 STREET STATION
  - ▲ HANDICAP RAMP @ STREET & STREET INTERSECTION
  - HANDICAP RAMP @ STREET & ALLEY INTERSECTION
  - FLOW ARROWS
  - Existing Concrete
  - Pavement

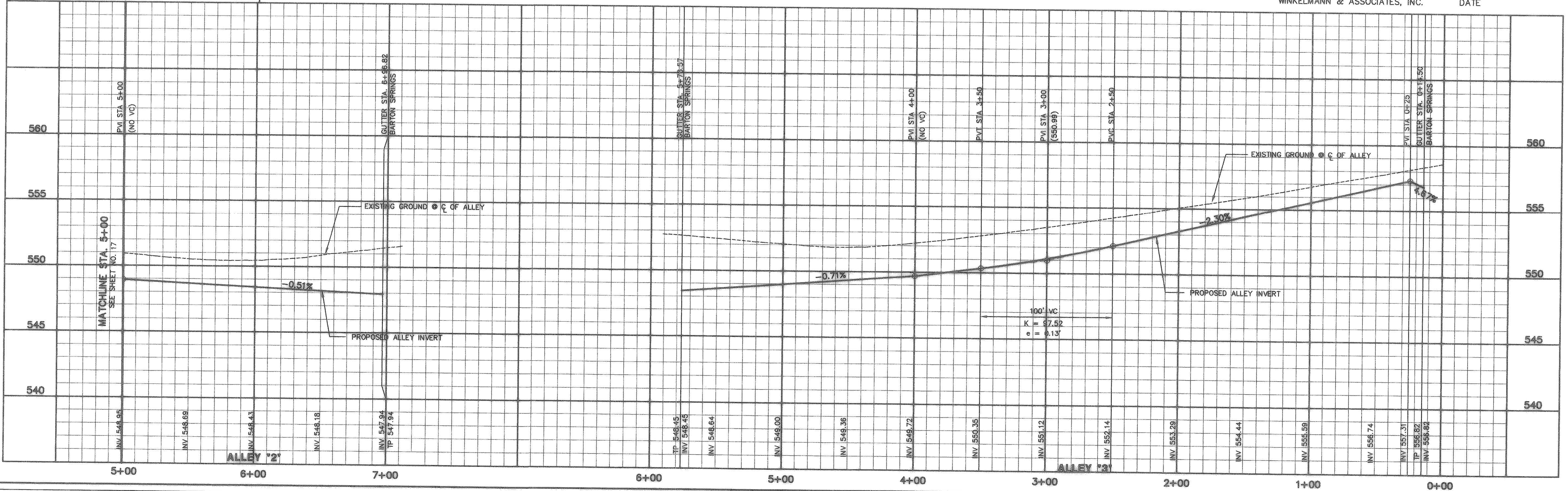
**BENCHMARK 1** USGS Monument—stamped Boren 1986  
Located approximately 1.25 miles east of Rockwall at the Rockwall Municipal Airport, in the north end of a circular grass area at the end of a taxiway.  
ELEVATION = 574.77

**BENCHMARK 2** USGS Monument—5" cap stamped N 1495/1986  
Located 24.6 feet west of the center of a paved road leading to the Rockwall Municipal Airport, 16.4 feet south of a utility pole with a transformer and light, 2 feet west of the north leg of a sign. Access to datum point is through a 5 inch logo cap.  
ELEVATION = 567.44

AS BUILT

To the best of our knowledge "Winkelmann and Associates, Inc." hereby states that this plan is "As-Built". The information is based on surveying conducted at the site and modification information provided by "the Contractor".

*Winkelmann* 9/25/07  
WINKELMANN & ASSOCIATES, INC. DATE



|     |      |          |          |
|-----|------|----------|----------|
| NO. | DATE | REVISION | APPROVAL |
|     |      |          |          |

THESE CONSTRUCTION PLANS WERE PREPARED UNDER THE RESPONSIBLE SUPERVISION OF MD. NAIM UDDIN KHAN, REGISTERED PROFESSIONAL ENGINEER NO. 87776.

THE SEAL APPEARING ON THIS DOCUMENT WAS AUTHORIZED BY MD. NAIM UDDIN KHAN, P.E. #87776

JOHN M. GLASS SURVEY ABSTRACT No. 88  
CITY OF ROCKWALL  
ROCKWALL COUNTY, TEXAS

D R HORTON  
4306 MILLER ROAD, SUITE A  
ROWLETT, TEXAS 75088  
214-607-4244

**PAVING PLAN & PROFILE**  
**ALLEY '2' - STA. 5+00 TO STA. 7+11.82**  
**ALLEY '3' - STA. 0+00 TO STA. 6+01.07**

Scale : 1"=40' Date : 09/08/06  
Designed By : IT  
Drawn By : IT  
Checked By : NK  
File : 40709ALLEY.dwg View : A2  
Project No. : 40709.00

**SHEET**  
**18**  
**OF**  
**45**

**Winkelmann & Associates, Inc.**  
CONSULTING CIVIL ENGINEERS & SURVEYORS  
P.O. BOX 2999  
DALLAS, TEXAS 75208  
(972) 482-7999  
(972) 482-7999 FAX