

NOTE:

- 1) PAVEMENT SHALL CONSIST OF 6" 3600 P.S.I. REINFORCED CONCRETE AND 6" LIME-STABILIZED SUBGRADE WITH 6" PARABOLIC CROWN FOR 28' STREETS.
- 2) PAVEMENT SHALL CONSIST OF 8" 3600 P.S.I. REINFORCED CONCRETE AND 6" LIME-STABILIZED SUBGRADE WITH 7" PARABOLIC CROWN FOR 44' STREETS.
- 3) PAVEMENT FOR ALLEYS SHALL CONSIST OF 4000 P.S.I. REINFORCED CONCRETE AND 6" LIME-STABILIZED SUBGRADE WITH 5" INVERT. TYPICAL ALLEY SECTION WILL BE 7'-5"-7".
- 4) CONTRACTOR TO RUN LIME SERIES BEFORE CONSTRUCTION.

STA 1+42.39 (32.89' RT.)
ALLEY "2"
EDGE OF PAVEMENT= 552.88

15' UTILITY ESMT.

BLOCK I

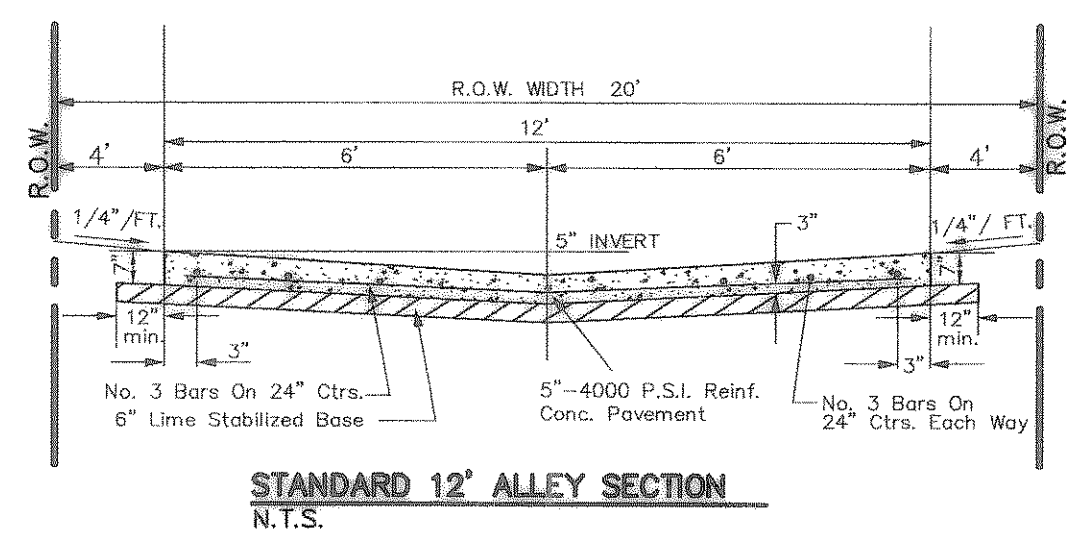
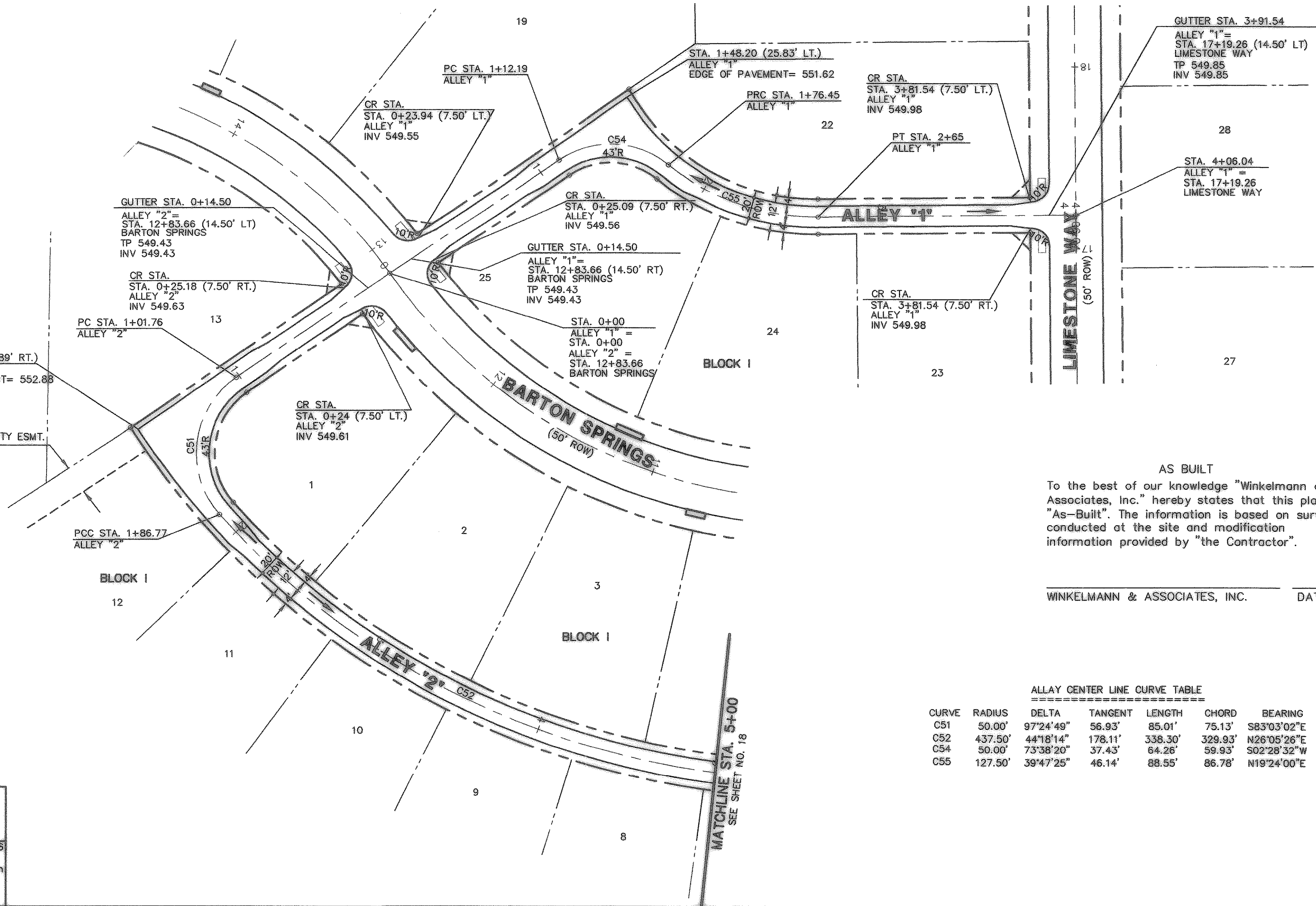
BLOCK I

BLOCK I

BLOCK I

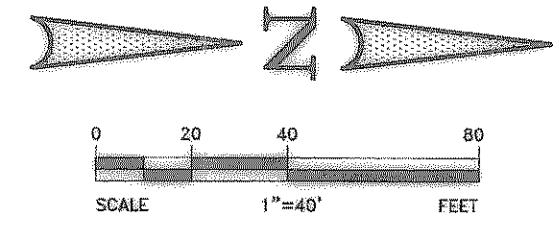
BENCHMARK 1 USGS Monument-stamped Baren 1986
Located approximately 1.25 miles east of Rockwall at the Rockwall Municipal Airport, in the north end of a circular grass area at the end of a taxiway.
ELEVATION = 574.77

BENCHMARK 2 USGS Monument-5" cap stamped N 1495/1986
Located 24.6 feet west of the center of a paved road leading to the Rockwall Municipal Airport, 16.4 feet south of a utility pole with a transformer and light, 2 feet west of the north leg of a sign.
Access to datum point is through a 5 inch logo cap.
ELEVATION = 567.44



AS BUILT
To the best of our knowledge "Winkelmann and Associates, Inc." hereby states that this plan is "As-Built". The information is based on surveying conducted at the site and modification information provided by "the Contractor".

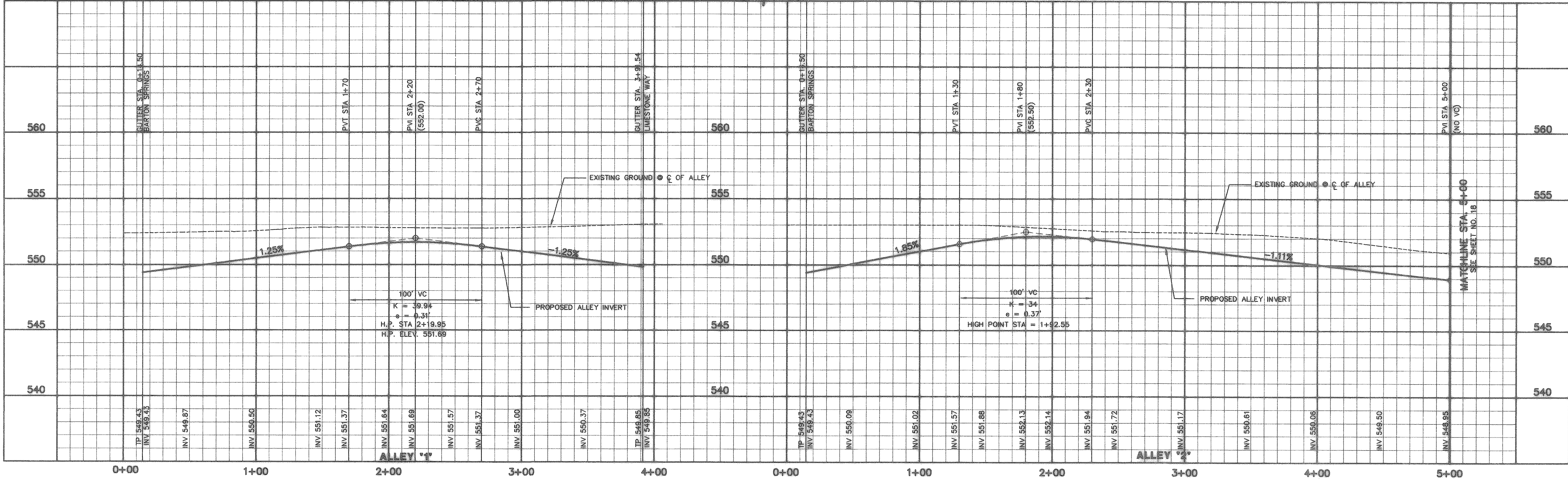
WINKELMANN & ASSOCIATES, INC. DATE



ALLEY CENTER LINE CURVE TABLE

CURVE	RADIUS	DELTA	TANGENT	LENGTH	CHORD	BEARING
C51	50.00'	97°24'49"	56.93'	85.01'	75.13'	S83°03'02"E
C52	437.50'	44°18'14"	178.11'	338.30'	329.93'	N26°05'26"E
C54	50.00'	73°38'20"	37.43'	64.28'	59.93'	S02°28'32"W
C55	127.50'	39°47'25"	46.14'	88.55'	86.78'	N19°24'00"E

- LEGEND**
- TC TOP OF CURB
 - TP TOP OF PAVEMENT
 - CR CURB RETURN
 - FL FLOW LINE
 - 1 STREET STATION
 - 2 HANDICAP RAMP @ STREET & STREET INTERSECTION
 - 3 HANDICAP RAMP @ STREET & ALLEY INTERSECTION
 - 4 FLOW ARROWS
 - 5 Existing Concrete Pavement



THESE CONSTRUCTION PLANS WERE PREPARED UNDER THE RESPONSIBLE SUPERVISION OF JOHN M. WINKELMANN, REGISTERED PROFESSIONAL ENGINEER NO. 87776.

THE SEAL APPEARING ON THIS DOCUMENT WAS AUTHORIZED BY MD. NAIM JUDDIN KHAN, P.E. #87776

JOHN M. GLASS SURVEY ABSTRACT No. 88
CITY OF ROCKWALL
ROCKWALL COUNTY, TEXAS
D R HORTON
4306 MILLER ROAD, SUITE A
ROWLETT, TEXAS 75088
214-607-4244

PAVING PLAN & PROFILE
ALLEY "1" - STA. 0+00 TO STA. 4+06.04
ALLEY "2" - STA. 0+00 TO STA. 5+00

Scale : 1" = 40' Date : 09/08/06
Designed By : IT
Drawn By : IT
Checked By : NK
File : 40709ALEY.dwg View : A1
Project No. : 40709.00

SHEET
17
OF
45

Winkelmann & Associates, Inc.
CONSULTING CIVIL ENGINEERS & SURVEYORS
6750 MILLETT PLAZA DRIVE, SUITE 100
DALLAS, TEXAS 75230
(972) 462-7080
(972) 462-7086 FAX

APPROVAL: _____
REVISION: _____
DATE: _____