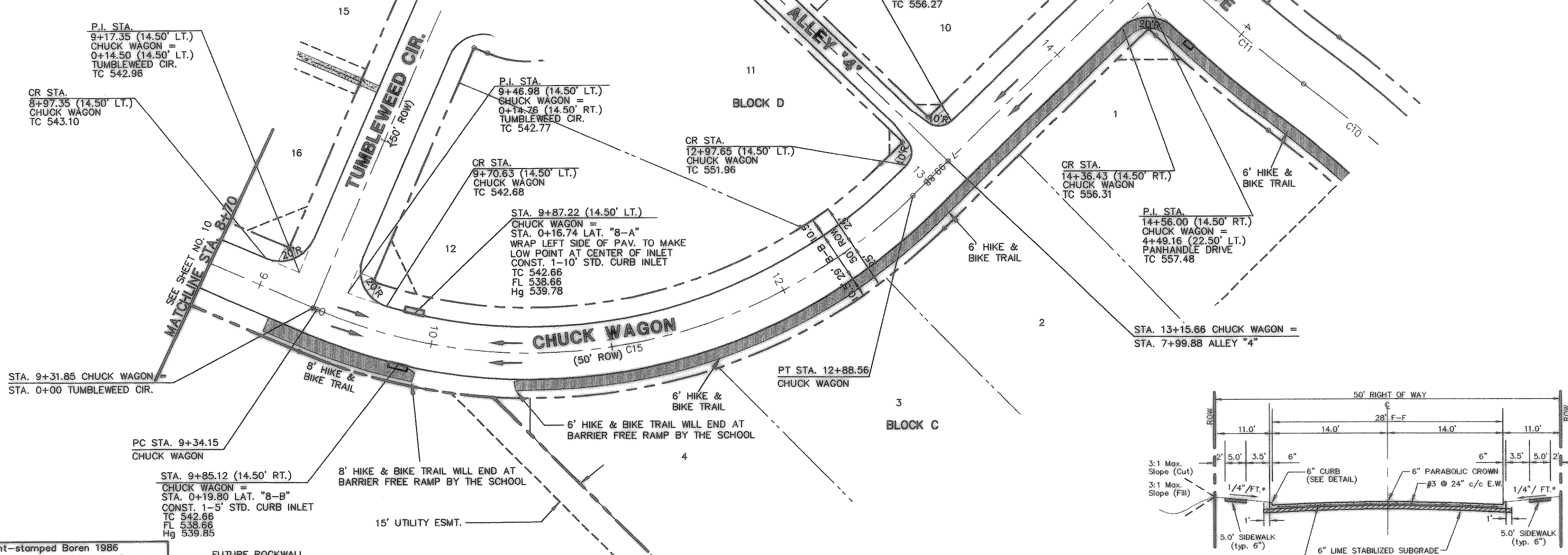
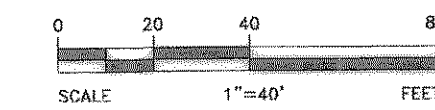


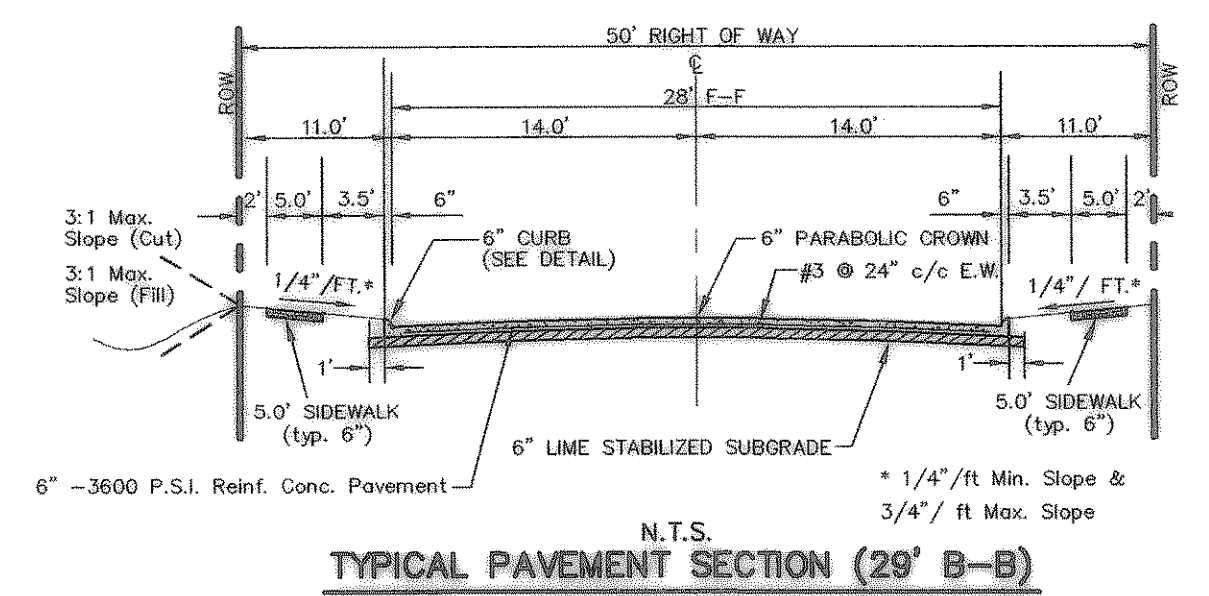
STREET CENTER LINE CURVE TABLE

CURVE	RADIUS	DELTA	TANGENT	LENGTH	CHORD	BEARING
C11	600.00'	72°4'07"	38.81'	77.51'	77.46'	N04°11'47"W
C15	300.00'	67°41'09"	201.16'	354.40'	334.15'	N55°26'55"W



AS BUILT
 To the best of our knowledge "Winkelmann and Associates, Inc." hereby states that this plan is "As-Built". The information is based on surveying conducted at the site and modification information provided by "the Contractor".
 W. Winkelmann 9/25/07
 WINKELMANN & ASSOCIATES, INC. DATE

- NOTE:
- 1) PAVEMENT SHALL CONSIST OF 6" 3600 P.S.I. REINFORCED CONCRETE AND 6" LIME-STABILIZED SUBGRADE WITH 6" PARABOLIC CROWN FOR 28' STREETS.
 - 2) PAVEMENT SHALL CONSIST OF 8" 3600 P.S.I. REINFORCED CONCRETE AND 6" LIME-STABILIZED SUBGRADE WITH 7" PARABOLIC CROWN FOR 44' STREETS.
 - 3) PAVEMENT FOR ALLEYS SHALL CONSIST OF 4000 P.S.I. REINFORCED CONCRETE AND 6" LIME-STABILIZED SUBGRADE WITH 5" INVERT. TYPICAL ALLEY SECTION WILL BE 7'-5"-7".
 - 4) CONTRACTOR TO RUN LINE SERIES BEFORE CONSTRUCTION.



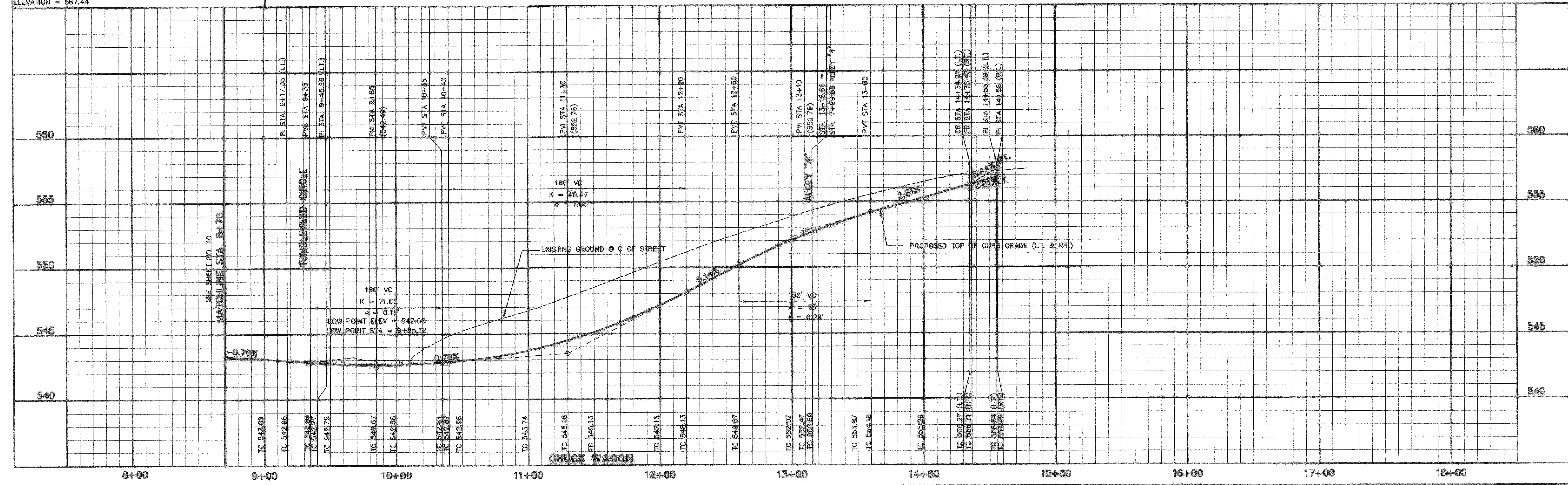
LEGEND

TC	TOP OF CURB
TP	TOP OF PAVEMENT
CR	CURB RETURN
FL	FLOW LINE
2	STREET STATION
1	HANDICAP RAMP @ STREET & STREET INTERSECTION
1	HANDICAP RAMP @ STREET & ALLEY INTERSECTION
→	FLOW ARROWS

BENCHMARK 1 USGS Monument—stamped Boren 1986
 Located approximately 1.25 miles east of Rockwall at the Rockwall Municipal Airport, in the north end of a circular grass area at the end of a driveway.
 ELEVATION = 574.77

BENCHMARK 2 USGS Monument—5" cap stamped N 1495/1986
 Located 24.6 feet west of the center of a paved road leading to the Rockwall Municipal Airport, 16.4 feet south of a utility pole with a transformer and light, 2 feet west of the north leg of a sign. Access to datum point is through a 5 inch logo cap.
 ELEVATION = 567.44

FUTURE ROCKWALL ELEMENTARY SCHOOL #11



THESE CONSTRUCTION PLANS WERE PREPARED BY
 JOHN M. GLASS, REGISTERED PROFESSIONAL ENGINEER NO. 87776.
 THE SEAL APPEARING ON THIS DOCUMENT WAS AUTHORIZED BY
 MD. NAIM UDDIN KHAN, P.E. #87776

APPROVED: [Signature]
 REVISION: [Signature]
 NO. DATE

JOHN M. GLASS, SURVEY ABSTRACT No. 88
 ROCKWALL COUNTY, TEXAS
 D R HORTON
 4306 MILLER ROAD, SUITE A
 ROWLETT, TEXAS 75088
 214-607-6244

PAVING PLAN & PROFILE
 CHUCK WAGON
 STA. 8+70 TO 14+78.20

Scale: 1"=40'
 Date: 08/24/06
 Designed By: IT / RS
 Drawn By: IT / RS
 Checked By: NK
 File: 40709PAV.DWG View: P09
 Project No.: 40709.00

SHEET
 11
 OF
 45