

LOCATION MAP
MAPSCO PAGE 100-X
N. 7040269.5083
E. 5800235.5196

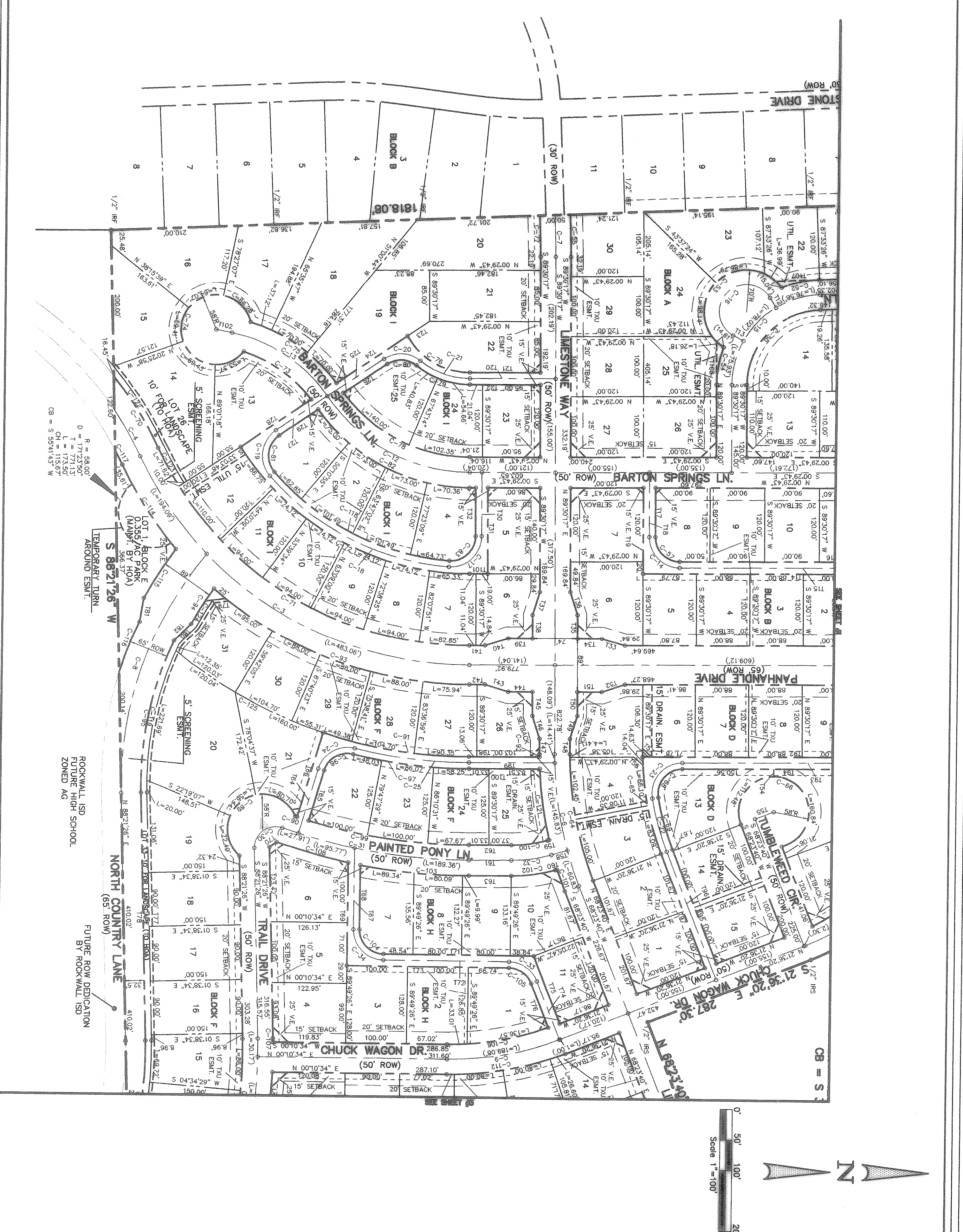
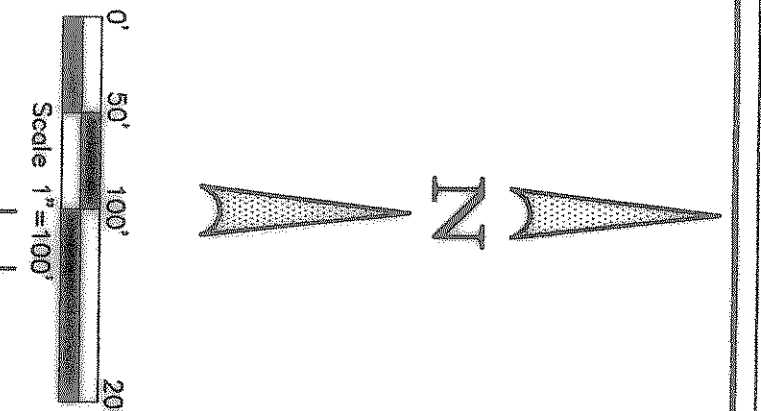
LOT AREA TABLE

BLOCK	LOT	SQ. FT.	BLOCK	LOT	SQ. FT.	BLOCK	LOT	SQ. FT.	BLOCK	LOT	SQ. FT.	BLOCK	LOT	SQ. FT.
A	1	2720	A	28	13000	BLOCK	1	13000	BLOCK	1	13000	BLOCK	1	13000
2	2	3017	29	15000	2	13901	2	13901	2	13901	2	13901	2	13901
3	3	2434	30	15000	3	13901	3	13901	3	13901	3	13901	3	13901
4	4	2633	31	15000	4	13901	4	13901	4	13901	4	13901	4	13901
5	5	1898	32	4633	5	13901	5	13901	5	13901	5	13901	5	13901
6	6	1394	33	15000	6	13901	6	13901	6	13901	6	13901	6	13901
7	7	1394	34	15000	7	13901	7	13901	7	13901	7	13901	7	13901
8	8	1394	35	15000	8	13901	8	13901	8	13901	8	13901	8	13901
9	9	1394	36	15000	9	13901	9	13901	9	13901	9	13901	9	13901
10	10	1394	37	15000	10	13901	10	13901	10	13901	10	13901	10	13901
11	11	1394	38	15000	11	13901	11	13901	11	13901	11	13901	11	13901
12	12	1394	39	15000	12	13901	12	13901	12	13901	12	13901	12	13901
13	13	1394	40	15000	13	13901	13	13901	13	13901	13	13901	13	13901
14	14	1394	41	15000	14	13901	14	13901	14	13901	14	13901	14	13901
15	15	1394	42	15000	15	13901	15	13901	15	13901	15	13901	15	13901
16	16	1394	43	15000	16	13901	16	13901	16	13901	16	13901	16	13901
17	17	1394	44	15000	17	13901	17	13901	17	13901	17	13901	17	13901
18	18	1394	45	15000	18	13901	18	13901	18	13901	18	13901	18	13901
19	19	1394	46	15000	19	13901	19	13901	19	13901	19	13901	19	13901
20	20	1394	47	15000	20	13901	20	13901	20	13901	20	13901	20	13901
21	21	1394	48	15000	21	13901	21	13901	21	13901	21	13901	21	13901
22	22	1394	49	15000	22	13901	22	13901	22	13901	22	13901	22	13901
23	23	1394	50	15000	23	13901	23	13901	23	13901	23	13901	23	13901
24	24	1394	51	15000	24	13901	24	13901	24	13901	24	13901	24	13901
25	25	1394	52	15000	25	13901	25	13901	25	13901	25	13901	25	13901
26	26	1394	53	15000	26	13901	26	13901	26	13901	26	13901	26	13901
27	27	1394	54	15000	27	13901	27	13901	27	13901	27	13901	27	13901
28	28	1394	55	15000	28	13901	28	13901	28	13901	28	13901	28	13901
29	29	1394	56	15000	29	13901	29	13901	29	13901	29	13901	29	13901
30	30	1394	57	15000	30	13901	30	13901	30	13901	30	13901	30	13901
31	31	1394	58	15000	31	13901	31	13901	31	13901	31	13901	31	13901
32	32	1394	59	15000	32	13901	32	13901	32	13901	32	13901	32	13901
33	33	1394	60	15000	33	13901	33	13901	33	13901	33	13901	33	13901
34	34	1394	61	15000	34	13901	34	13901	34	13901	34	13901	34	13901
35	35	1394	62	15000	35	13901	35	13901	35	13901	35	13901	35	13901
36	36	1394	63	15000	36	13901	36	13901	36	13901	36	13901	36	13901
37	37	1394	64	15000	37	13901	37	13901	37	13901	37	13901	37	13901
38	38	1394	65	15000	38	13901	38	13901	38	13901	38	13901	38	13901
39	39	1394	66	15000	39	13901	39	13901	39	13901	39	13901	39	13901
40	40	1394	67	15000	40	13901	40	13901	40	13901	40	13901	40	13901
41	41	1394	68	15000	41	13901	41	13901	41	13901	41	13901	41	13901
42	42	1394	69	15000	42	13901	42	13901	42	13901	42	13901	42	13901
43	43	1394	70	15000	43	13901	43	13901	43	13901	43	13901	43	13901
44	44	1394	71	15000	44	13901	44	13901	44	13901	44	13901	44	13901
45	45	1394	72	15000	45	13901	45	13901	45	13901	45	13901	45	13901
46	46	1394	73	15000	46	13901	46	13901	46	13901	46	13901	46	13901
47	47	1394	74	15000	47	13901	47	13901	47	13901	47	13901	47	13901
48	48	1394	75	15000	48	13901	48	13901	48	13901	48	13901	48	13901
49	49	1394	76	15000	49	13901	49	13901	49	13901	49	13901	49	13901
50	50	1394	77	15000	50	13901	50	13901	50	13901	50	13901	50	13901
51	51	1394	78	15000	51	13901	51	13901	51	13901	51	13901	51	13901
52	52	1394	79	15000	52	13901	52	13901	52	13901	52	13901	52	13901
53	53	1394	80	15000	53	13901	53	13901	53	13901	53	13901	53	13901
54	54	1394	81	15000	54	13901	54	13901	54	13901	54	13901	54	13901
55	55	1394	82	15000	55	13901	55	13901	55	13901	55	13901	55	13901
56	56	1394	83	15000	56	13901	56	13901	56	13901	56	13901	56	13901
57	57	1394	84	15000	57	13901	57	13901	57	13901	57	13901	57	13901
58	58	1394	85	15000	58	13901	58	13901	58	13901	58	13901	58	13901
59	59	1394	86	15000	59	13901	59	13901	59	13901	59	13901	59	13901
60	60	1394	87	15000	60	13901	60	13901	60	13901	60	13901	60	13901
61	61	1394	88	15000	61	13901	61	13901	61	13901	61	13901	61	13901
62	62	1394	89	15000	62	13901	62	13901	62	13901	62	13901	62	13901
63	63	1394	90	15000	63	13901	63	13901	63	13901	63	13901	63	13901
64	64	1394	91	15000	64	13901	64	13901	64	13901	64	13901	64	13901
65	65	1394	92	15000	65	13901	65	13901	65	13901	65	13901	65	13901
66	66	1394	93	15000	66	13901	66	13901	66	13901	66	13901	66	13901
67	67	1394	94	15000	67	13901	67	13901	67	13901	67	13901	67	13901
68	68	1394	95	15000	68	13901	68	13901	68	13901	68	13901	68	13901
69	69	1394	96	15000	69	13901	69	13901	69	13901	69	13901	69	13901
70	70	1394	97	15000	70	13901	70	13901	70	13901	70	13901	70	13901
71	71	1394	98	15000	71	13901	71	13901	71	13901	71	13901	71	13901
72	72	1394	99	15000	72	13901	72	13901	72	13901	72	13901	72	13901
73	73	1394	100	15000	73	13901	73	13901	73	13901	73	13901	73	13901

R = 5769.58°
D = 00°34'25"
T = 28.88'
L = 57.76'
CH = S 87°56'28" E
CB = S 87°56'28" E

DMIGHT &
JANET WALKER

TIMOTHY & CAROLE PERKINS



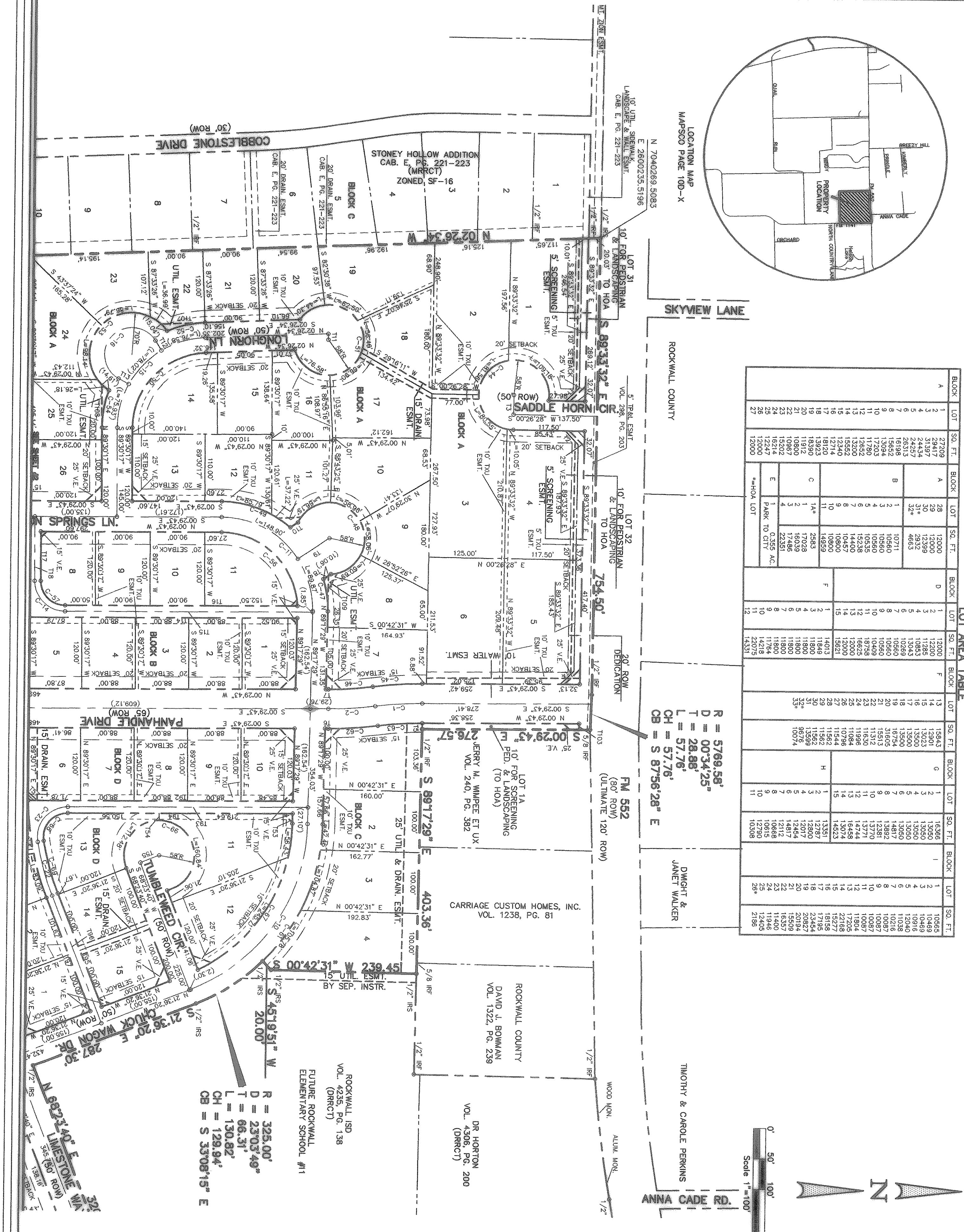
FINAL PLAT DALTON RANCH
63.222 AC. - 142 RESIDENTIAL LOTS

Scale: 1"=100' Date: 9-27-06
Designed By: MK
Drawn By: MK
Checked By: BJE
File: 40709.FTPGADWG
Project No.: 40709.01

JOHN M. GLASS SURVEY ABSTRACT No. 63
CITY OF ROCKWALL
ROCKWALL COUNTY, TEXAS

D R HORTON
4302 MILLER ROAD, SUITE A
ROCKWALL, TEXAS 78088
817-962-9999

Winkelmann & Associates, Inc.
CONSULTING CIVIL ENGINEERS & SURVEYORS
6702 HILLCREST PLACE, SUITE 100
DALLAS, TEXAS 75230
(972) 961-7888 FAX



FINAL PLAT DALTON RANCH
63.222 AC. - 142 RESIDENTIAL LOTS

Scale: 1"=100' Date: 9-27-06
Designed By: MK
Drawn By: MK
Checked By: BJE
File: 40709.FTPGADWG
Project No.: 40709.01

JOHN M. GLASS SURVEY ABSTRACT No. 63
CITY OF ROCKWALL
ROCKWALL COUNTY, TEXAS

D R HORTON
4302 MILLER ROAD, SUITE A
ROCKWALL, TEXAS 78088
817-962-9999

Winkelmann & Associates, Inc.
CONSULTING CIVIL ENGINEERS & SURVEYORS
6702 HILLCREST PLACE, SUITE 100
DALLAS, TEXAS 75230
(972) 961-7888 FAX