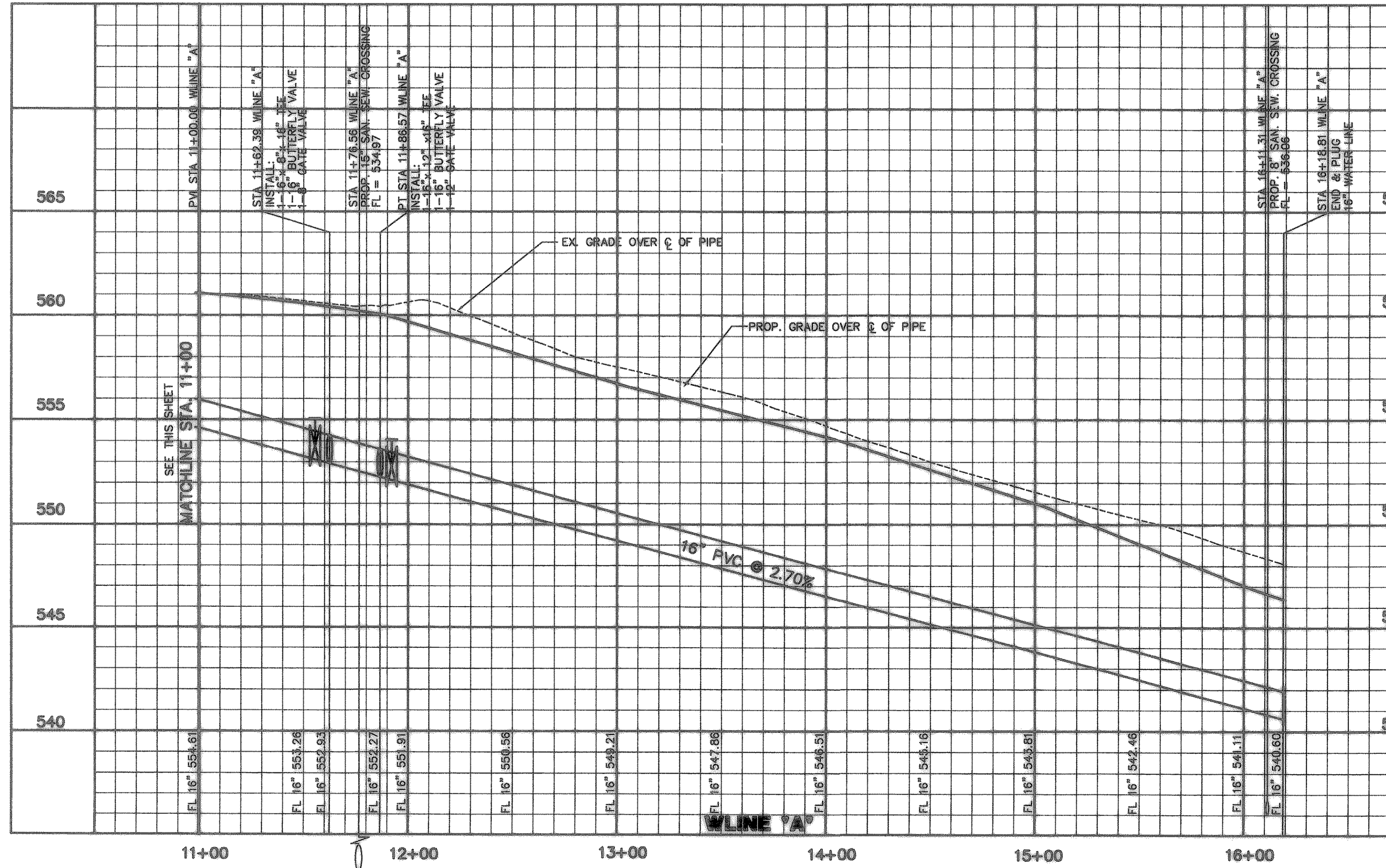


NOTE:
 INSTALL 24" STEEL CASING TO EXTEND
 5' PAST BACK OF CURB FOR 16" WATER LINE
 AT FM 552 AND SADDLE HORN CIRCLE &
 PANHANDLE DRIVE INTERSECTIONS.



CAUTION !!!
UNDERGROUND UTILITIES
 EXISTING UTILITIES AND UNDERGROUND FACILITIES INDICATED ON THESE PLANS HAVE BEEN LOCATED FROM REFERENCE INFORMATION SUPPLIED BY VARIOUS OWNERS OF THE FACILITIES. THE ENGINEER DOES NOT ACCEPT THE RESPONSIBILITY FOR THE UTILITY LOCATIONS SHOWN. IT SHALL BE THE RESPONSIBILITY OF THE CONTRACTOR TO VERIFY BOTH HORIZONTALLY AND VERTICALLY THE LOCATION OF ALL EXISTING UTILITIES AND UNDERGROUND FACILITIES PRIOR TO CONSTRUCTION. TO TAKE NECESSARY PRECAUTIONS IN ORDER TO PROTECT ALL FACILITIES ENCOUNTERED, AND TO NOTIFY THE ENGINEER PROMPTLY OF ALL CONFLICTS OF THE WORK WITH EXISTING FACILITIES. THE CONTRACTOR SHALL PRESERVE AND PROTECT ALL EXISTING UTILITIES FROM DAMAGE DURING CONSTRUCTION. ANY DAMAGE BY THE CONTRACTOR TO EXISTING UTILITIES SHALL BE REPAIRED BY THE CONTRACTOR AT HIS EXPENSE. CONTACT ALL POSSIBLE UTILITY AND UNDERGROUND FACILITY OWNERS.

AS BUILT
 To the best of our knowledge "Winkelman and Associates, Inc." hereby states that this plan is "As-Built". The information is based on surveying conducted at the site and modification information provided by "the Contractor".
John M. Glass 9/25/07
 WINKELMANN & ASSOCIATES, INC. DATE

THESE CONSTRUCTION PLANS WERE PREPARED UNDER THE RESPONSIBLE SUPERVISION OF MD. NAIM UDDIN KHAN, REGISTERED PROFESSIONAL ENGINEER NO. 87776.

APPROVED: *John M. Glass* 9/8/06

JOHN M. GLASS SURVEY ABSTRACT No. 88
 CITY OF ROCKWALL
 ROCKWALL COUNTY, TEXAS

D. F. HORTON SUITE A
 4306 MILLER ROAD, SUITE A
 ROWLETT, TEXAS 75088
 214-807-4244

Winkelman & Associates, Inc.
 CONSULTING CIVIL ENGINEERS & SURVEYORS
 8750 MILLCREEK PLAZA, BLDG. SUITE 100
 DALLAS, TEXAS 75248
 (972) 482-7000
 (972) 482-7000 FAX

Scale: 1" = 4'-0" Date: 08/15/06
 Designed By: MS
 Drawn By: MS
 Checked By: NK
 File: 40709WT.dwg View: WLINEA
 Project No.: 40709.00

SHEET 348 OF 45