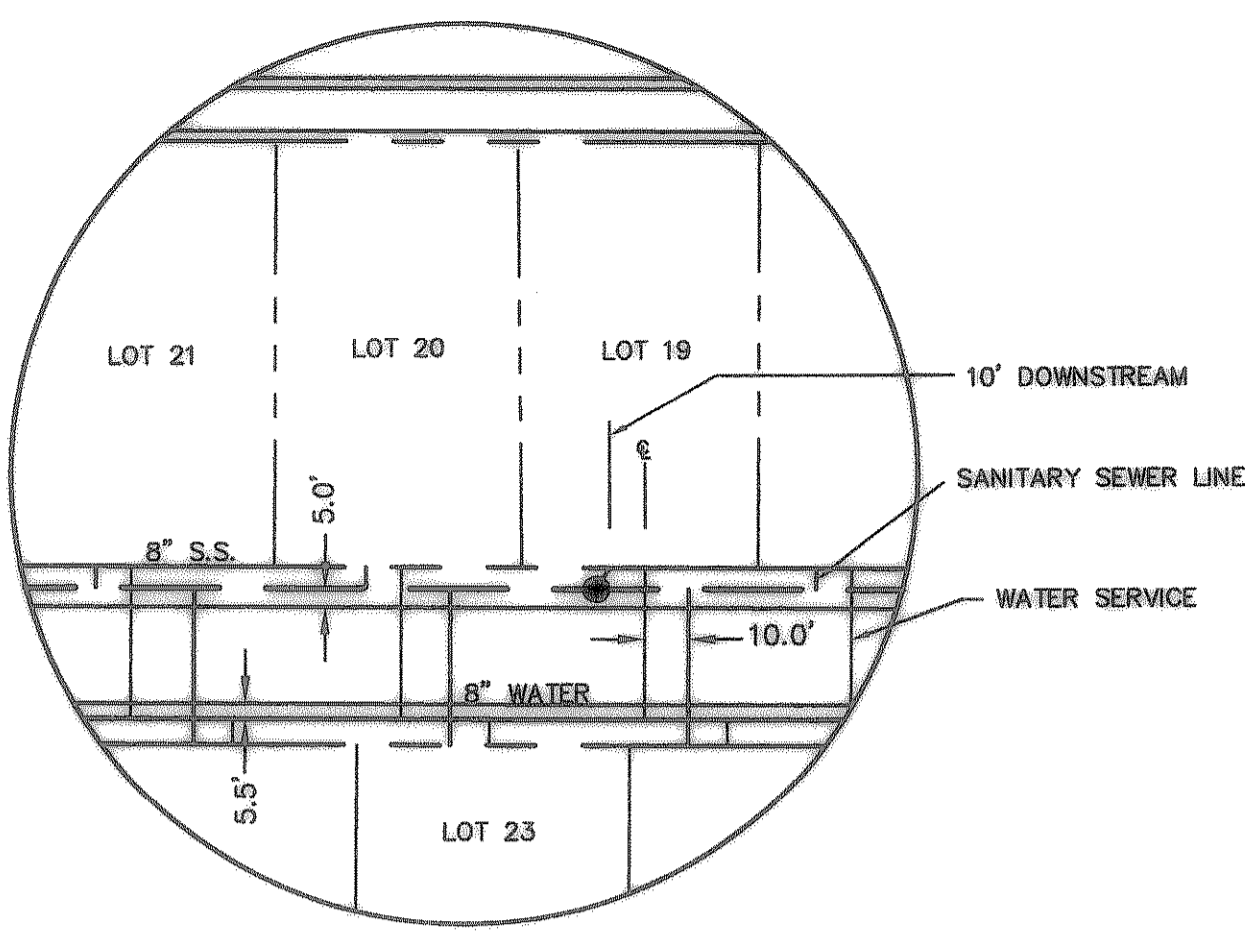
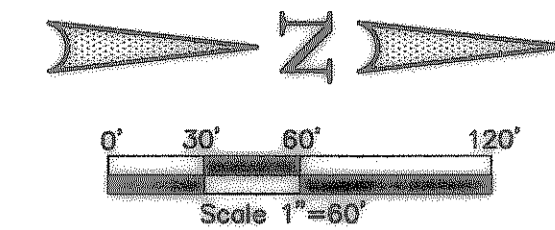
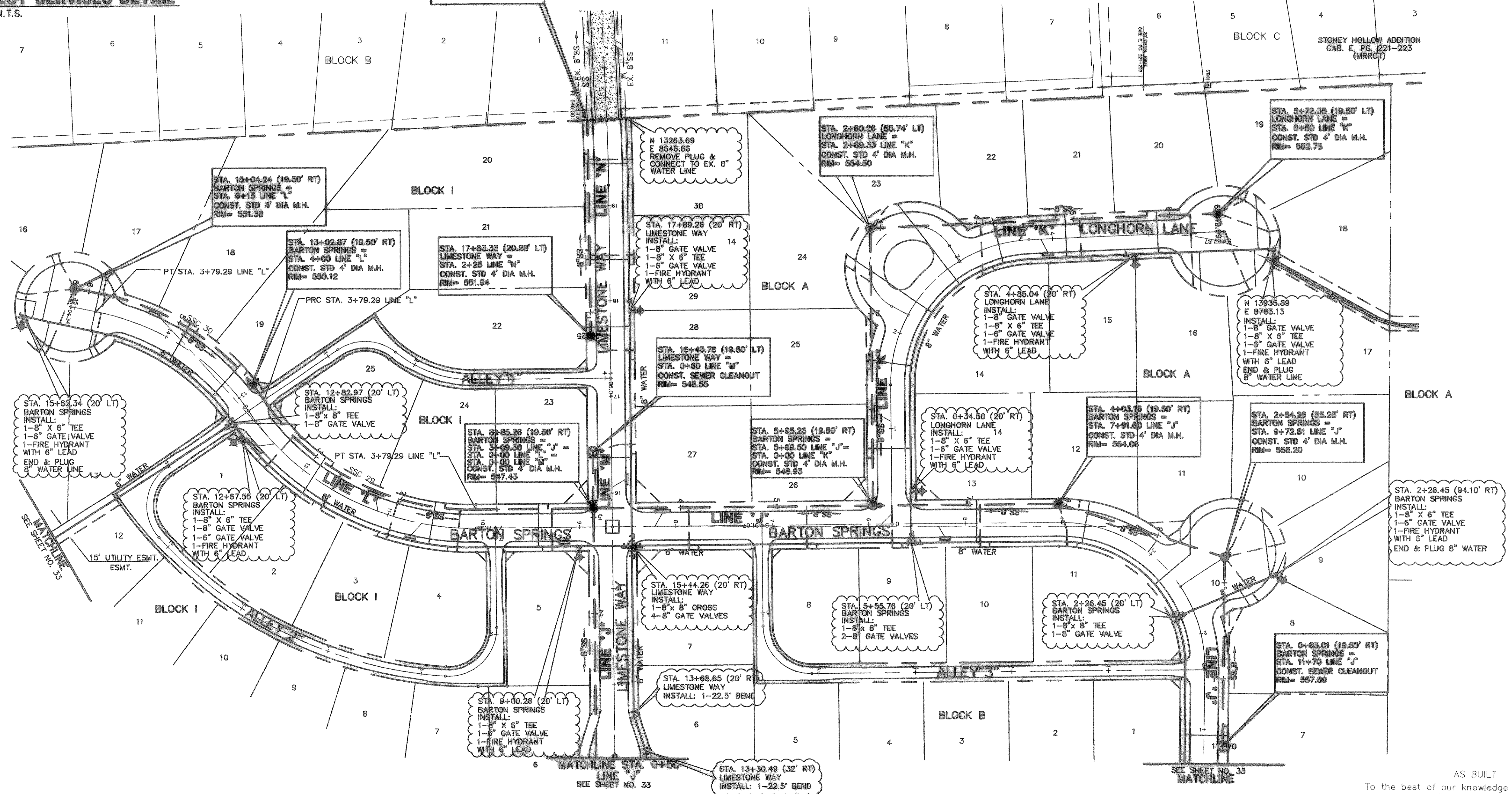


SANITARY SEWER CURVE TABLE						
CURVE	LENGTH	RADIUS	DELTA	TANGENT	CHORD	BEARING
SSC29	257.75'	263.00'	56°09'05"	140.29'	247.56'	N27°34'50"E
SSC30	209.20'	269.50'	44°28'34"	110.19'	203.99'	S33°25'06"W



LOT SERVICES DETAIL
N.T.S.



THESE CONSTRUCTION PLANS WERE PREPARED UNDER THE RESPONSIBLE SUPERVISION OF MD. NAM UDDIN KHAN, REGISTERED PROFESSIONAL ENGINEER, LICENSE NO. 7775, STATE OF TEXAS. DATE: 9/18/06

THE SEAL APPEARING ON THIS DOCUMENT WAS AUTHORIZED BY MD. NAM UDDIN KHAN, P.E. #87776

JOHN M. GLASS SURVEY ABSTRACT No. 88
CITY OF ROCKWALL
ROCKWALL COUNTY, TEXAS
D. B. HORTON ROAD, SUITE A
4308 MILLER ROAD, SUITE A
ROWLETT, TEXAS 75086
214-807-4244

WATER & SANITARY SEWER PLAN

Scale: 1"=60'
Date: 08/23/06
Designed By: IT
Drawn By: IT
Checked By: INK
File: 40709WS.DWG | View: WSI
Project No.: 40709.00

AS BUILT
To the best of our knowledge "Winkelman and Associates, Inc." hereby states that this plan is "As-Built". The information is based on surveying conducted at the site and modification information provided by "the Contractor".

W. Winkelman 9/25/07
WINKELMANN & ASSOCIATES, INC. DATE

BENCHMARK 1 USGS Monument—stamped Boren 1986
Located approximately 1.25 miles east of Rockwall at the Rockwall Municipal Airport, in the north end of a circular grass area at the end of a taxiway.
ELEVATION = 574.17

BENCHMARK 2 USGS Monument—5" cap stamped N 1495/1986
Located 24.6 feet west of the center of a paved road leading to the Rockwall Municipal Airport, 16.4 feet south of a utility pole with a transformer and light, 2 feet west of the north leg of a sign. Access to datum point is through a 5 inch logo cap.
ELEVATION = 577.44