

LEGEND	
---	GAS
---	OHE
---	SS
---	W
---	UGE
---	GAS LINE
---	OVERHEAD ELECTRIC LINE
---	UNDER GROUND ELECTRIC LINE
---	SANITARY SEWER LINE
---	STORM SEWER LINE
---	WATER LINE
---	WATER LINE
---	LIGHTING CIRCUIT CONDUIT
---	POWER POLE
---	EXISTING MANHOLE
---	EXISTING FIRE HYDRANT
---	WATER METER
---	WATER VALVE
---	LIGHT POLE

ONE CALL SYSTEM
 AS REQUIRED BY LAW ONE CALL SYSTEM MUST BE CONTACTED AT LEAST 72 HOURS PRIOR TO ANY EXCAVATION OPERATIONS. PREPARED. IT IS THE CONTRACTOR'S RESPONSIBILITY TO CONTACT THE LOCAL ONE CALL SYSTEM. CALL 811 FOR LOCAL OR VISIT WWW.CALL811.ORG FOR A LIST OF ALL OTHER (800) NUMBERS.

CAUTION - NOTICE TO CONTRACTOR
 THE CONTRACTOR IS PUT ON NOTICE THAT THERE MAY BE NUMEROUS UNDERGROUND UTILITIES IN THE LINE OF WORK, SUCH AS WATER, SEWER, GAS, PIPING, TELEPHONE AND ELECTRICAL. SOME MAY BE ABANDONED WHILE MANY ARE ACTIVE. EXISTING UTILITIES SHOWN ON THE PLANS REPRESENT A DILIGENT EFFORT TO SHOW THEIR APPROXIMATE LOCATION.

THE CONTRACTOR SHALL EXERCISE EXTREME CAUTION WHEN CONDUCTING EXCAVATION OPERATIONS. DAMAGES SHALL BE REPAIRED IMMEDIATELY AT CONTRACTOR'S EXPENSE.

THE CONTRACTOR MUST CONTACT THE APPROPRIATE UTILITY COMPANY AT LEAST 72 HOURS BEFORE ANY EXCAVATION TO REQUEST FIELD LOCATION OF UTILITIES.

THE CONTRACTOR IS SPECIFICALLY CAUTIONED THAT THE LOCATION AND/OR ELEVATION OF EXISTING UTILITIES AS SHOWN ON THESE PLANS IS BASED ON RECORDS OF THE VARIOUS UTILITY COMPANIES, AND WHERE POSSIBLE, MEASUREMENTS TAKEN IN THE FIELD. THE INFORMATION IS NOT TO BE RELIED ON AS BEING EXACT OR COMPLETE. THE CONTRACTOR MUST CALL THE APPROPRIATE UTILITY COMPANIES AT LEAST 72 HOURS BEFORE ANY EXCAVATION TO REQUEST EXACT FIELD LOCATION OF UTILITIES. IT SHALL BE THE RESPONSIBILITY OF THE CONTRACTOR TO RELOCATE UTILITIES WHICH CONFLICT WITH THE PROPOSED IMPROVEMENT SHOWN ON THE PLANS.

PERMITS NOTE
 CONTRACTOR SHALL OBTAIN ALL NECESSARY PERMITS REQUIRED BY FEDERAL, STATE, OR LOCAL CODES AND/OR UTILITY SERVICE COMPANIES PRIOR TO START OF CONSTRUCTION.

INSPECTIONS/CERTIFICATIONS NOTE
 ALL NECESSARY INSPECTIONS AND/OR CERTIFICATIONS REQUIRED BY LOCAL CODES AND/OR UTILITY SERVICE COMPANIES SHALL BE PERFORMED PRIOR TO SUBSTANTIAL PROJECT COMPLETION.

BACKFLOW PREVENTER DEVICES NOTE
 BACKFLOW PREVENTER DEVICES (BUILDING POTABLE FIRE AND IRRIGATION) MUST BE TESTED UPON INSTALLATION BY A CONTRACTOR WHO IS REGISTERED WITH THE CITY OF ROCKWALL FOR THE APPROPRIATE TYPE OF BACKFLOW TESTING AND SUBMIT REPORT TO THE BUILDING INSPECTION DEPT.

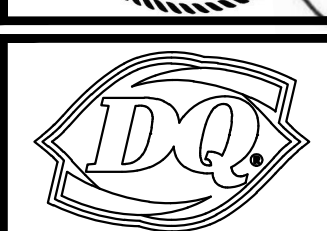
P.O. Box 5300
 TYLER TX 75712
 T 903.877.4128
 F 903.877.4449
 www.layconstruct.com



ALL DRAWINGS AND WRITTEN MATERIAL APPEARING HEREIN CONSTITUTE ORIGINAL AND UNPUBLISHED WORK OF DESIGN OR INVENTION. ANY REPRODUCTION, COPIES, OR USE OF THESE DRAWINGS WITHOUT THE WRITTEN CONSENT OF THE DESIGNER IS PROHIBITED.



TOTAL ENGINEERING SERVICES LLC
 103 COMMUNITY BLVD.
 LONGVIEW, TX 75605
 903.212.2856
 te-services.com
 TYPE FIRM 13335



Restaurant
 AMERICAN DAIRY QUEEN
 MINNEAPOLIS, MN U.S.A.
 *REGISTERED U.S. PATENT OFFICE
 AMERICAN DAIRY QUEEN CORPORATION. THIS DRAWING, ITS DESIGN DETAIL AND INVENTION ARE THE PROPERTY OF AMERICAN DAIRY QUEEN INC. (ADQ) AND SHALL NOT BE COPIED IN ANY MANNER NOR DISCLOSED TO ANY OUTSIDE PARTY WITHOUT ADQ CONSENT.

BUILDING TYPE:
 DAIRY QUEEN
 TEXAS

NEW BUILDING
DAIRY QUEEN
 1801 SOUTH GOLIAD STREET
 ROCKWALL, TEXAS 75087

REVISIONS	
NO.	DATE
1	10-15-2014
2	01-07-2015
3	01-23-2015
4	06-03-2015

DATE:
 08/27/2014

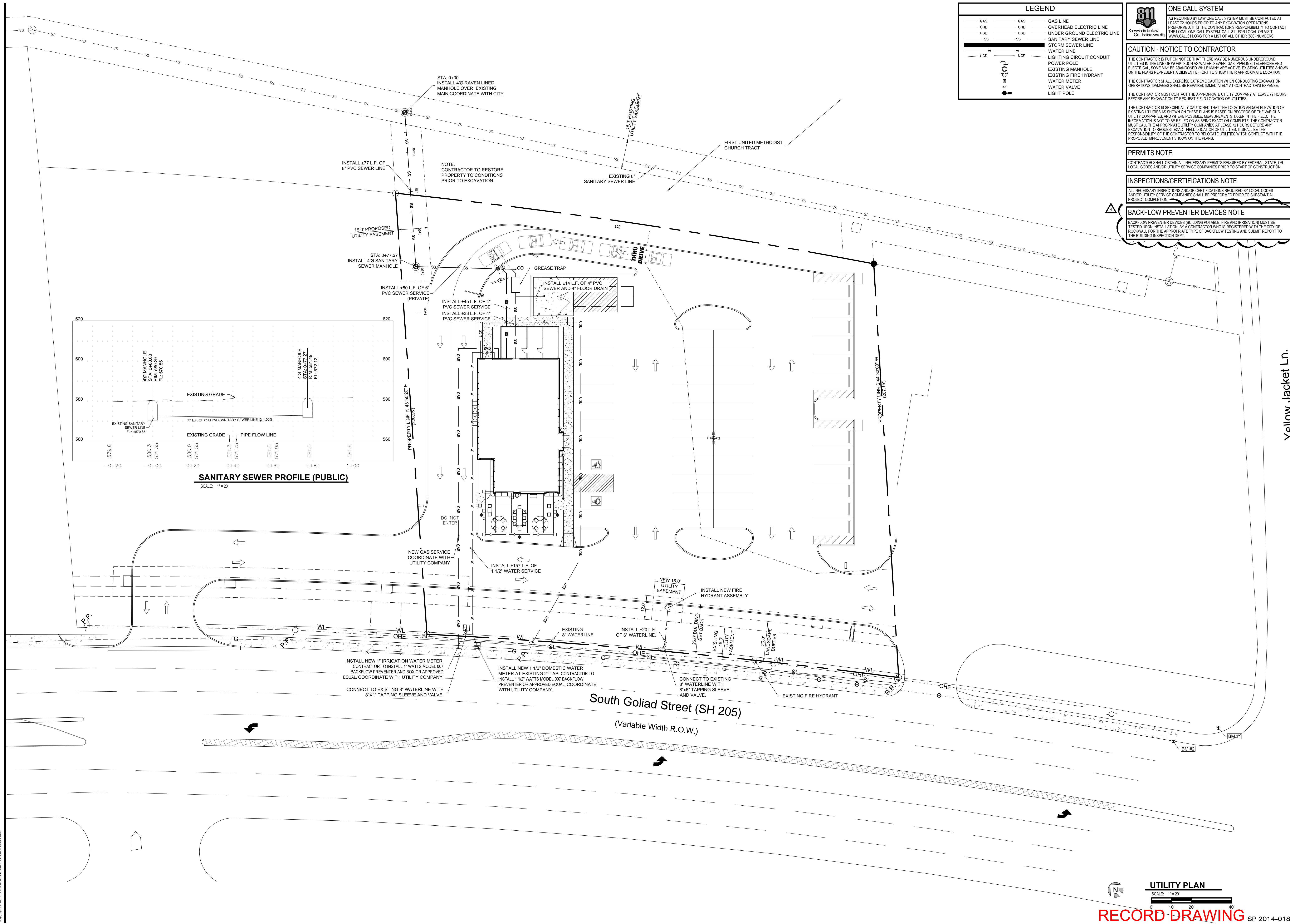
PROJECT NO.
LAY 14 002

SHEET NO.
C3.0

ISSUED FOR PERMIT
 UTILITY PLAN

UTILITY PLAN
 SCALE: 1" = 20'

RECORD DRAWING SP 2014-018



File Name: P:\LAY 14 002 - UT Construction - 00 Rockwall TFC\02July 14 002 - UTI P\UTL.dwg Plot Date: 08/20/14 3:23:38 AM
 Copyright © 2011, TOTAL ENGINEERING SERVICES, LLC