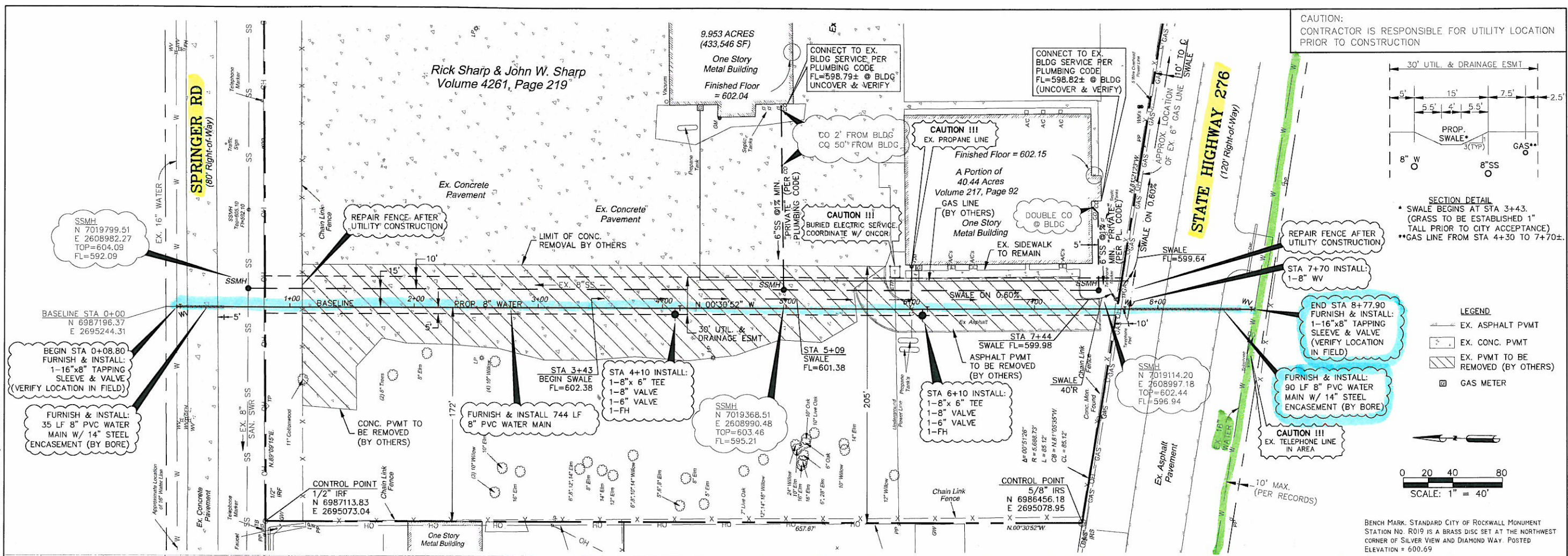
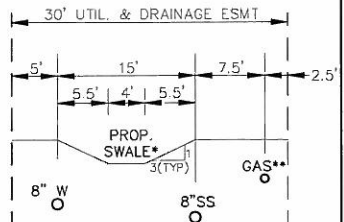


S:\148100 (DFW INSULATION)\C1-SEWER NEW.dwg-Model Plotted Jan 22, 2014 at 6:09pm by kamderson | Last Saved by: kamderson

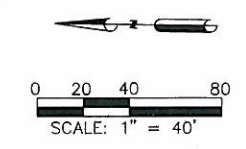


CAUTION:  
CONTRACTOR IS RESPONSIBLE FOR UTILITY LOCATION  
PRIOR TO CONSTRUCTION

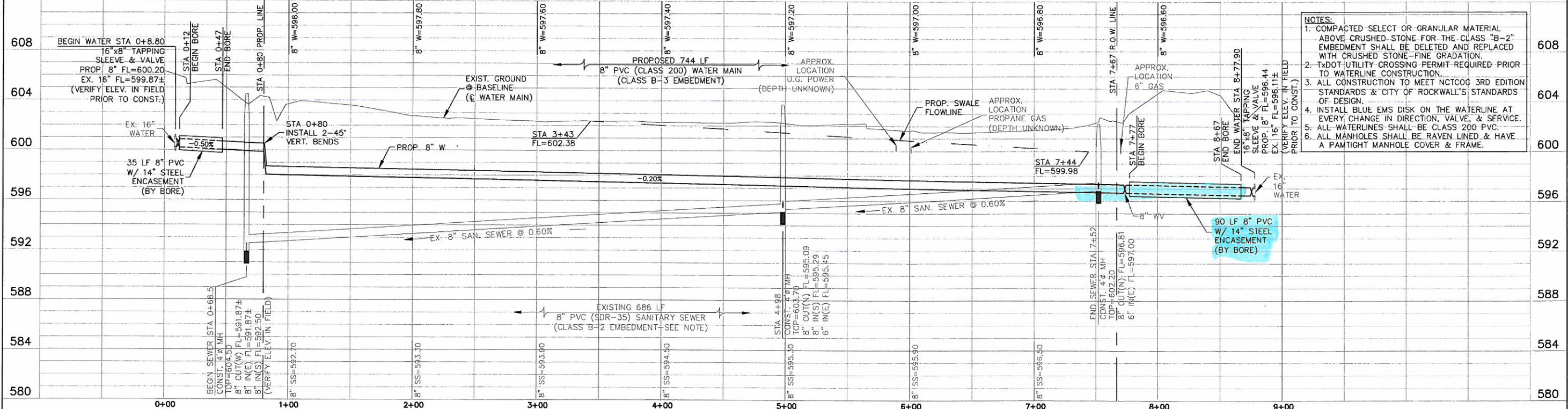


SECTION DETAIL  
\* SWALE BEGINS AT STA 3+43.  
(GRASS TO BE ESTABLISHED 1" TALL PRIOR TO CITY ACCEPTANCE)  
\*\*GAS LINE FROM STA 4+30 TO 7+70±.

LEGEND  
 - - - EX. ASPHALT PVMT  
 ▨ EX. CONC. PVMT  
 ▩ EX. PVMT TO BE REMOVED (BY OTHERS)  
 ⊠ GAS METER

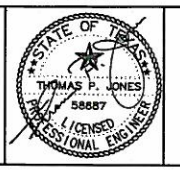


BENCH MARK, STANDARD CITY OF ROCKWALL MONUMENT  
STATION NO. R019 IS A BRASS DISC SET AT THE NORTHWEST  
CORNER OF SILVER VIEW AND DIAMOND WAY. POSTED  
ELEVATION = 600.69



- NOTES:
1. COMPACTED SELECT OR GRANULAR MATERIAL ABOVE CRUSHED STONE FOR THE CLASS "B-2" EMBEDMENT SHALL BE DELETED AND REPLACED WITH CRUSHED STONE-FINE GRADATION.
  2. TxDOT UTILITY CROSSING PERMIT REQUIRED PRIOR TO WATERLINE CONSTRUCTION.
  3. ALL CONSTRUCTION TO MEET NCTCOG 3RD EDITION STANDARDS & CITY OF ROCKWALL'S STANDARDS OF DESIGN.
  4. INSTALL BLUE EMS DISK ON THE WATERLINE AT EVERY CHANGE IN DIRECTION, VALVE, & SERVICE.
  5. ALL WATERLINES SHALL BE CLASS 200 PVC.
  6. ALL MANHOLES SHALL BE RAVEN LINED & HAVE A PAINTIGHT MANHOLE COVER & FRAME.

△		Designed By: TPJ	Job No.: 1400?
△		Drawn By: JKA	Date: 01/22/14
△		Checked By: TPJ	Scale: 1" = 40'H (22"x34") 1" = 4'V (22"x34")
△		Approved By:	
Rev.	Date	Description	App.



**Binkley & Barfield** | C&P  
consulting engineers

**DFW INSULATION**  
2578 HWY 276  
ROCKWALL, TEXAS

**SITE IMPROVEMENTS**  
**UTILITY PLAN & PROFILE**

Sheet No.  
**C1**  
of \_\_\_\_\_