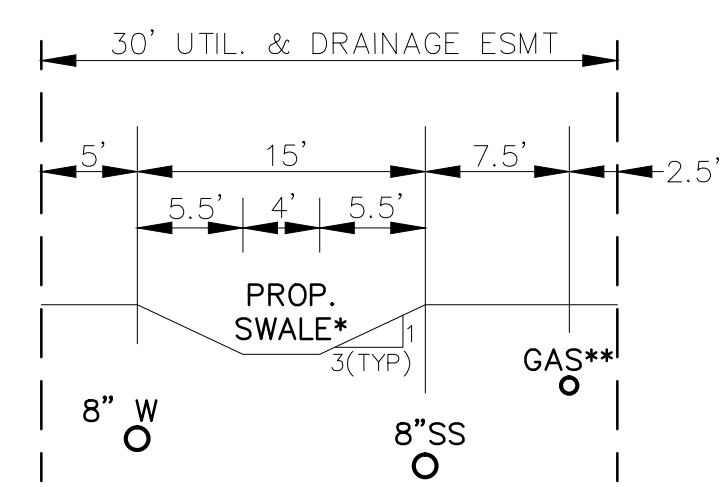
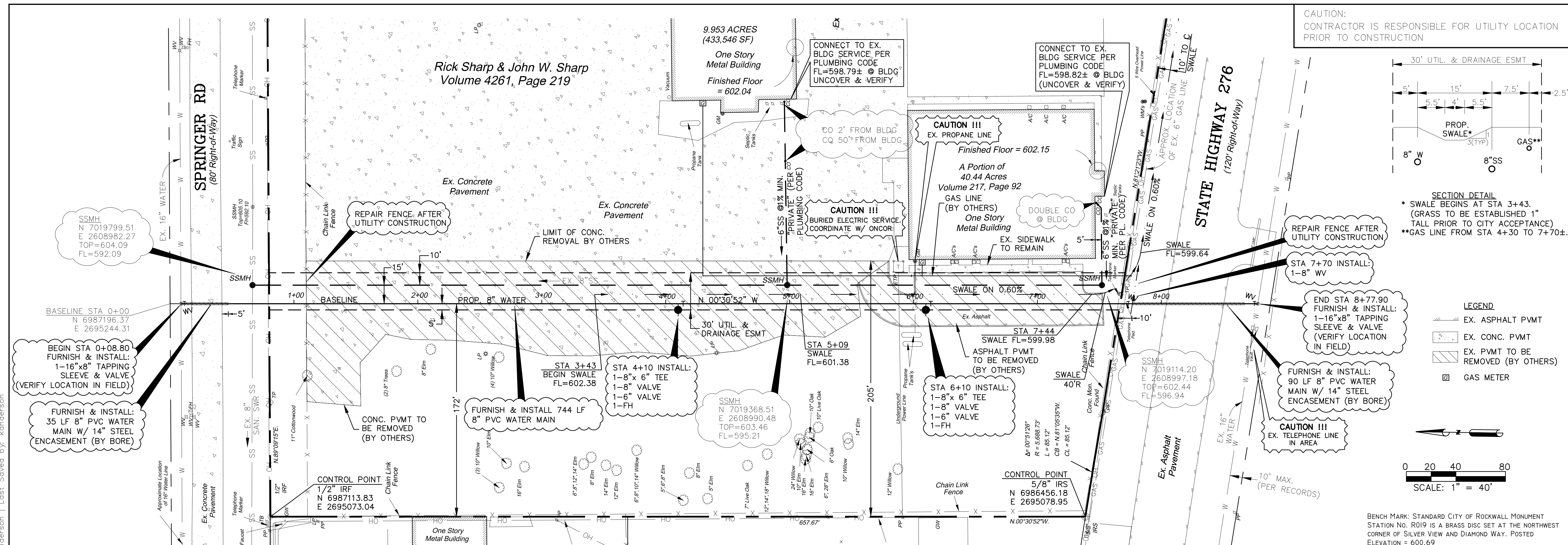
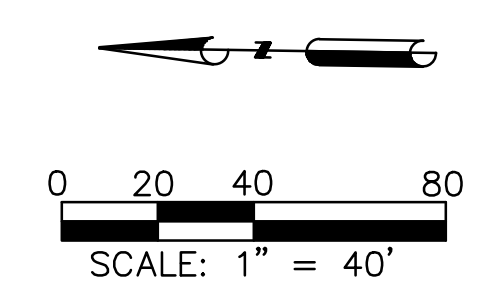


CAUTION:  
CONTRACTOR IS RESPONSIBLE FOR UTILITY LOCATION  
PRIOR TO CONSTRUCTION

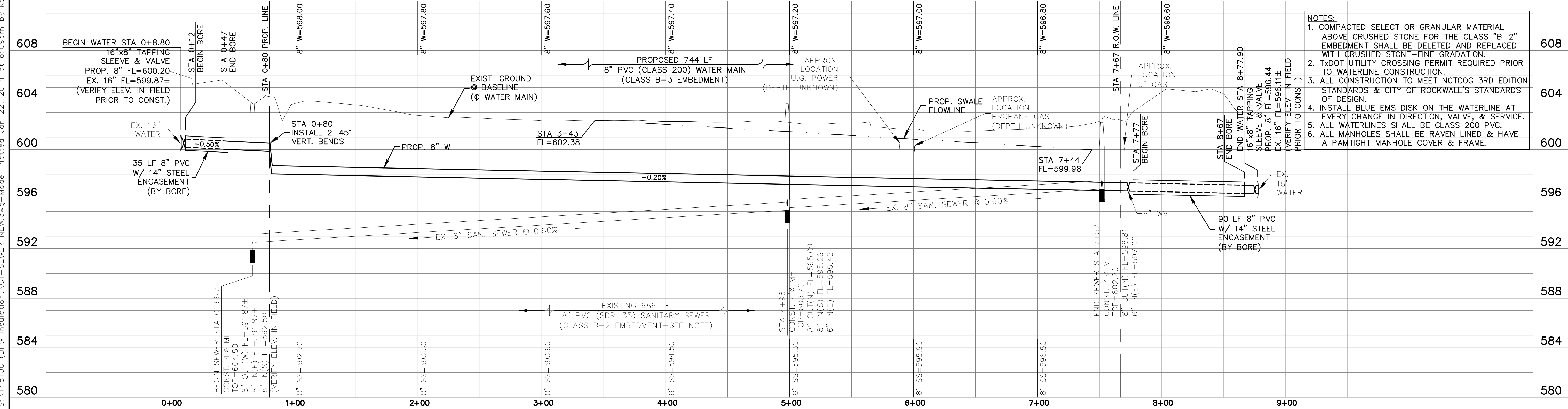


SECTION DETAIL  
\* SWALE BEGINS AT STA 3+43.  
(GRASS TO BE ESTABLISHED 1"  
TALL PRIOR TO CITY ACCEPTANCE)  
\*\*GAS LINE FROM STA 4+30 TO 7+70±.

- LEGEND
- EX. ASPHALT PAVMT
  - EX. CONC. PAVMT
  - EX. PAVMT TO BE REMOVED (BY OTHERS)
  - GAS METER



BENCH MARK: STANDARD CITY OF ROCKWALL MONUMENT  
STATION NO. R019 IS A BRASS DISC SET AT THE NORTHWEST  
CORNER OF SILVER VIEW AND DIAMOND WAY. POSTED  
ELEVATION = 600.69

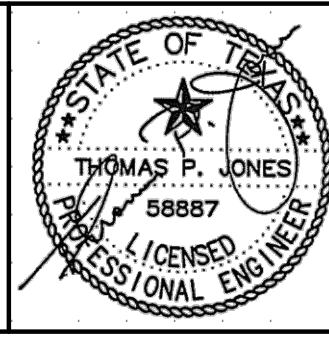


- NOTES:
1. COMPACTED SELECT OR GRANULAR MATERIAL ABOVE CRUSHED STONE FOR THE CLASS "B-2" EMBEDMENT SHALL BE DELETED AND REPLACED WITH CRUSHED STONE-FINE GRADATION.
  2. TxDOT UTILITY CROSSING PERMIT REQUIRED PRIOR TO WATERLINE CONSTRUCTION.
  3. ALL CONSTRUCTION TO MEET NCTCOG 3RD EDITION STANDARDS & CITY OF ROCKWALL'S STANDARDS OF DESIGN.
  4. INSTALL BLUE EMS DISK ON THE WATERLINE AT EVERY CHANGE IN DIRECTION, VALVE, & SERVICE.
  5. ALL WATERLINES SHALL BE CLASS 200 PVC.
  6. ALL MANHOLES SHALL BE RAVEN LINED & HAVE A PAMTIGHT MANHOLE COVER & FRAME.

Rev.	Date	Description	App.

Designed By: TPJ  
Drawn By: JKA  
Checked By: TPJ  
Approved By: \_\_\_\_\_

Job No.: 1400?  
Date: 01/22/14  
Scale: 1"=40'H(22"x34")  
1"=4'V(22"x34")



**Binkley & Barfield** | C&P  
consulting engineers

**DFW INSULATION**  
2578 HWY 276  
ROCKWALL, TEXAS

**SITE IMPROVEMENTS**  
**UTILITY PLAN & PROFILE**

Sheet No:  
**C1**  
of \_\_\_\_\_