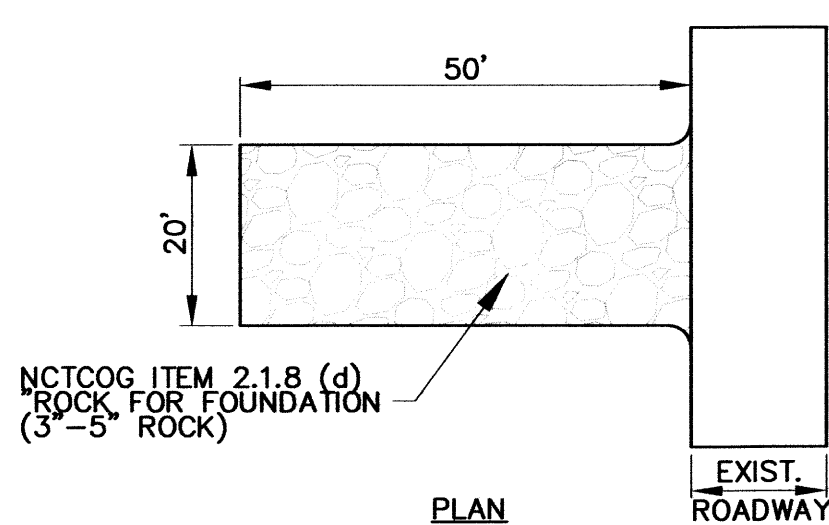


SILT FENCE DETAIL
N.T.S.

SILT FENCE

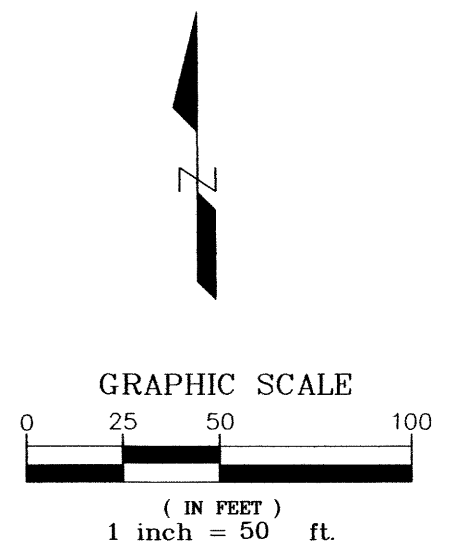
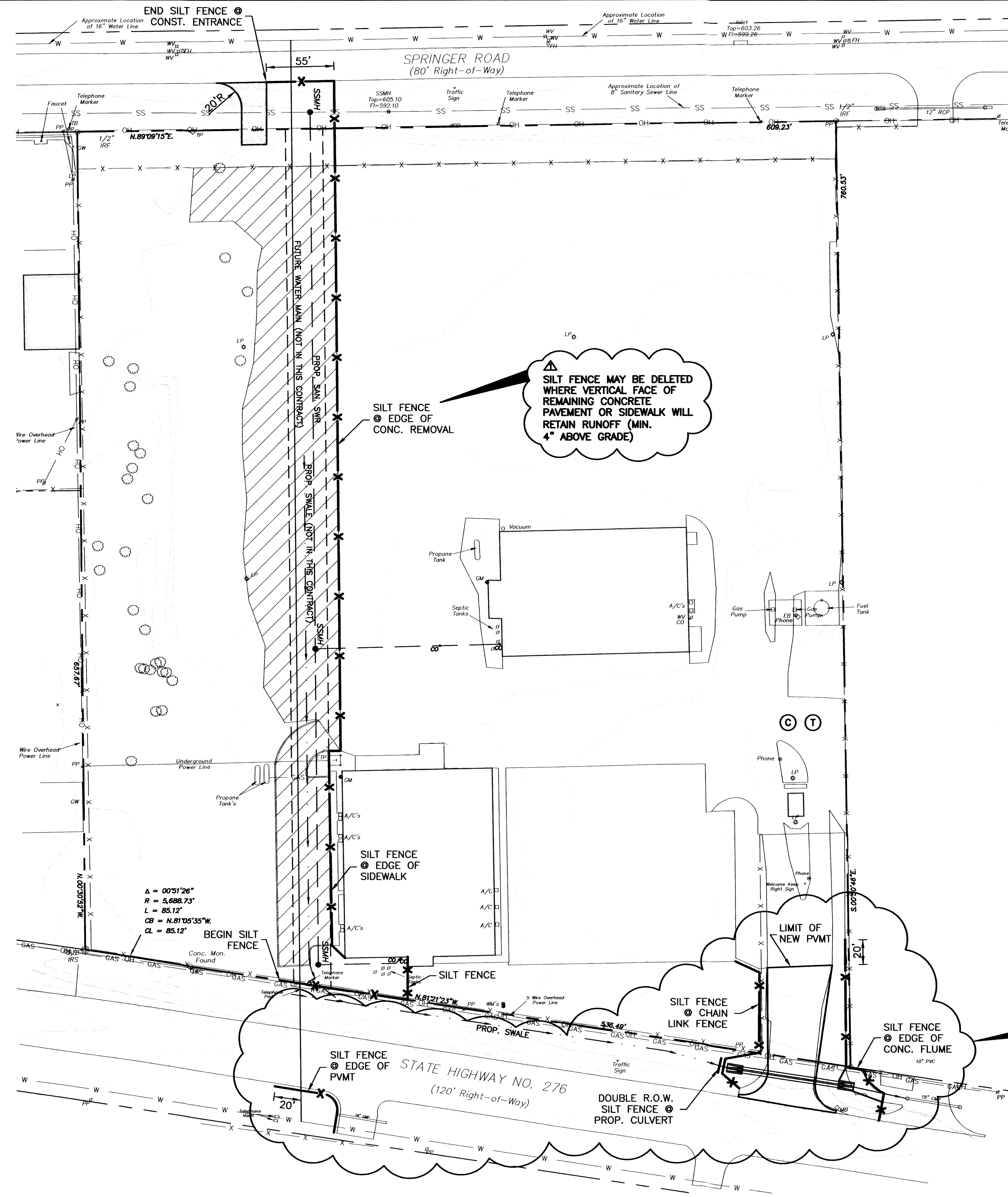
1. STEEL POST WHICH SUPPORT THE SILT FENCE SHALL BE INSTALLED ON A SLIGHT ANGLE TOWARD THE ANTICIPATED RUNOFF SOURCE. POST MUST BE EMBEDDED A MINIMUM OF ONE FOOT.
2. THE TOE OF THE SILT FENCE SHALL BE TRENCHED IN WITH A SPADE OR MECHANICAL TRENCHER, SO THAT THE DOWN SLOPE FACE OF THE TRENCH IS FLAT AND PERPENDICULAR TO THE LINE OF FLOW. WHERE FENCE CANNOT BE TRENCHED IN (E.G. PAVEMENT), WEIGHT FABRIC FLAP WITH ROCK ON UPHILL SIDE TO PREVENT FLOW FROM SEEPING UNDER FENCE.
3. THE TRENCH MUST BE A MINIMUM OF 6 INCHES DEEP AND 6 INCHES WIDE TO ALLOW FOR THE SILT FENCE FABRIC TO BE LAID IN THE GROUND AND BACKFILLED WITH COMPACTED MATERIAL.
4. SILT FENCE SHOULD BE SECURELY FASTENED TO EACH STEEL SUPPORT POST OR TO WOVEN WIRE, WHICH IS IN TURN ATTACHED TO THE STEEL FENCE POST. THERE SHALL BE A 3 FOOT OVERLAP, SECURELY FASTENED WHERE ENDS OF FABRIC MEET.
5. INSPECTION SHALL BE MADE WEEKLY AND AFTER EACH RAINFALL. REPAIR OR REPLACEMENT SHALL BE MADE PROMPTLY AS NEEDED.
6. SILT FENCE SHALL BE REMOVED WHEN THE SITE IS COMPLETELY STABILIZED SO AS NOT TO BLOCK OR IMPEDE STORM FLOW OR DRAINAGE.
7. ACCUMULATED SILT SHALL BE REMOVED WHEN IT REACHES A DEPTH OF HALF THE HEIGHT OF THE FENCE. THE SILT SHALL BE DISPOSED OF AT AN APPROVED SITE AND IN SUCH A MANNER AS TO NOT CONTRIBUTE TO ADDITIONAL SILTATION.



CONSTRUCTION ENTRANCE
N.T.S.

STABILIZED CONSTRUCTION ENTRANCE

1. STONE SIZE - 3 TO 5 INCHES OPEN GRADED ROCK.
2. LENGTH-AS EFFECTIVE, BUT NOT LESS THAN 50 FEET.
3. THICKNESS-NOT LESS THAN 12 INCHES.
4. WIDTH-NOT LESS THAN FULL WIDTH OF ALL POINTS OF INGRESS OR EGRESS.
5. WASHING-WHEN NECESSARY, WHEELS SHALL BE CLEANED TO REMOVE SEDIMENT PRIOR TO ENTRANCE ONTO PUBLIC ROADWAY. WHEN WASHING IS REQUIRED, IT SHALL BE DONE ON AN AREA STABILIZED WITH CRUSHED STONE WHICH DRAINS INTO AN APPROVED TRAP OR SEDIMENT BASIN. ALL SEDIMENT SHALL BE PREVENTED FROM ENTERING ANY STORM DRAIN, DITCH, OR WATERCOURSE USING APPROVED METHODS.
6. MAINTENANCE-THE ENTRANCE SHALL BE MAINTAINED IN A CONDITION WHICH WILL PREVENT TRACKING OR FLOWING OF SEDIMENT ONTO PUBLIC ROADWAYS. THIS MAY REQUIRE PERIODIC TOP DRESSING WITH ADDITIONAL STONE AS CONDITIONS DEMAND, AND REPAIR AND/OR CLEANOUT OF ANY MEASURES USED TO TRAP SEDIMENT. ALL SEDIMENT SPILLED DROPPED, WASHED OR TRACKED ONTO PUBLIC ROADWAY MUST BE REMOVED IMMEDIATELY.
7. DRAINAGE-ENTRANCE MUST BE PROPERLY GRADED OR INCORPORATE A DRAINAGE SWALE TO PREVENT RUNOFF FROM LEAVING THE CONSTRUCTION SITE.



LEGEND

- PROP. SILT FENCE
- EXIST. CONTOUR
- CONSTRUCTION ENTRANCE
- INLET PROTECTION
- CONCRETE WASHOUT
- COVERED TRASH
- PMV REMOVED BY OTHERS
- PROPOSED CONC.

NOTES

1. SEE SHT. C1 FOR UTILITY PLAN & PROFILE.
2. TOTAL SITE AREA = 9.95 AC.
3. TOTAL DISTURBED AREA = 0.5 AC (ESTIMATED AT 30' x 725')

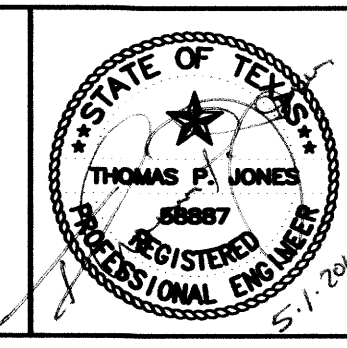
EROSION CONTROL GENERAL NOTES

1. TEMPORARY EROSION CONTROL MEASURES SHALL COMPLY WITH COG SPECIFICATION ITEM 3.12 "TEMPORARY EROSION, SEDIMENT AND WATER POLLUTION CONTROL" COG C.O.P. EROSION CONTROL MANUAL & BEST MANAGEMENT PRACTICES.
2. ALL TEMPORARY EROSION CONTROL DEVICES AND MEASURES SHALL BE INSTALLED AND MAINTAINED BY THE CONTRACTOR FOR THE DURATION OF THE PROJECT.
3. ALL CONTRACTORS SHALL MINIMIZE THE GENERATION OF DUST BY WATERING THEIR WORKING AREAS AND HAIL ROADS AS REQUIRED.
4. CONCRETE WASHOUT SHALL BE SIZED TO PROVIDE A MINIMUM OF 6 CUBIC FEET OF CONTAINMENT AREA VOLUME FOR EVERY 10 CUBIC YARDS OF CONCRETE POURED.
5. 75%-80% OF ALL DISTURBED AREAS TO HAVE GRASS 1' IN HEIGHT PRIOR TO CITY ACCEPTANCE.

RECORD DRAWINGS
TO THE BEST OF OUR KNOWLEDGE BINKLEY & BARFIELD, INC., HEREBY STATES THAT THIS PLAN IS AS-BUILT. THIS INFORMATION PROVIDED IS BASED ON SURVEYING AT THE SITE AND INFORMATION PROVIDED BY THE CONTRACTOR.
DATE: 5.1.2012 BY: [Signature]
BINKLEY & BARFIELD, INC.

S:\148100 (DFW Insulation)\C2B-EROSION.dwg-Model Plotted May 01, 2012 at 10:50am by jrs | Last Saved by: jrs

1/9/12	SILT FENCE OPTION	TPJ	Designed By: TPJ	Job No.: 148100
			Drawn By: JRS	Date: 11/10/11
			Checked By: TPJ	Scale: 1"=50'H(22"x34")
Rev.	Date	Description	App.	Approved By:



Binkley & Barfield
consulting engineers
1255 W. 15th Street, Suite 250 Plano, Texas 75075 www.binkleybarfield.com
Firm Registration #257

DFW INSULATION
2578 HWY 276
ROCKWALL, TEXAS

SITE IMPROVEMENTS
EROSION CONTROL

Sheet No:
C2
of