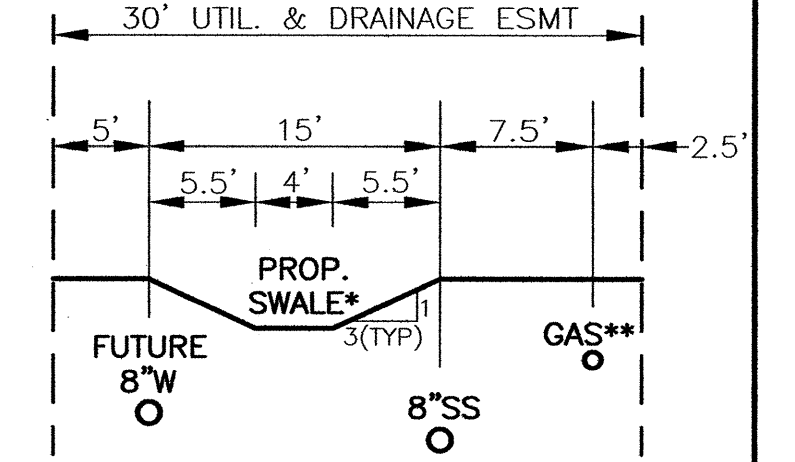
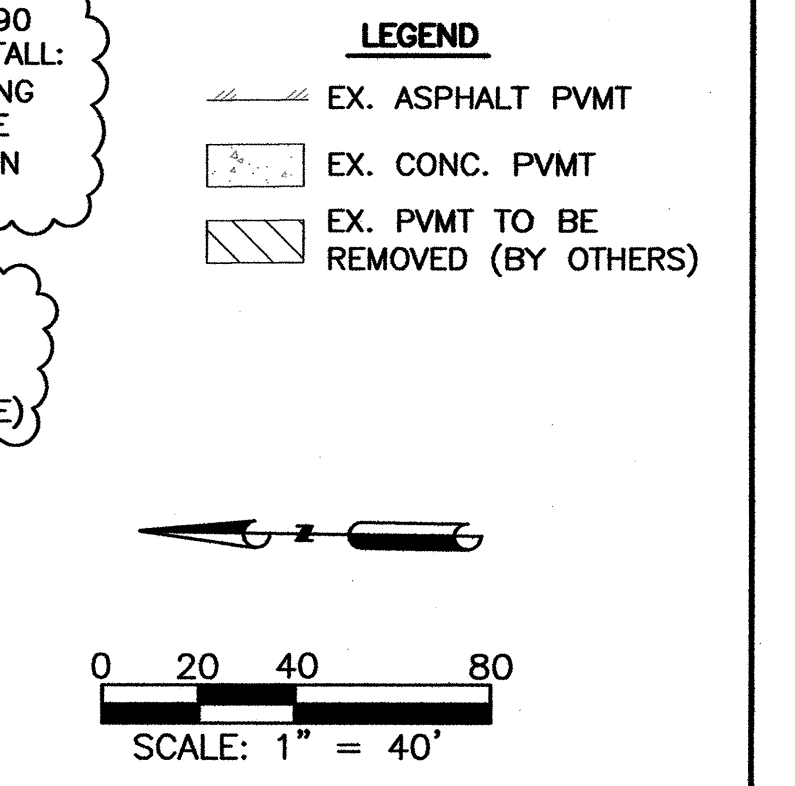


CAUTION:
CONTRACTOR IS RESPONSIBLE FOR UTILITY LOCATION
PRIOR TO CONSTRUCTION

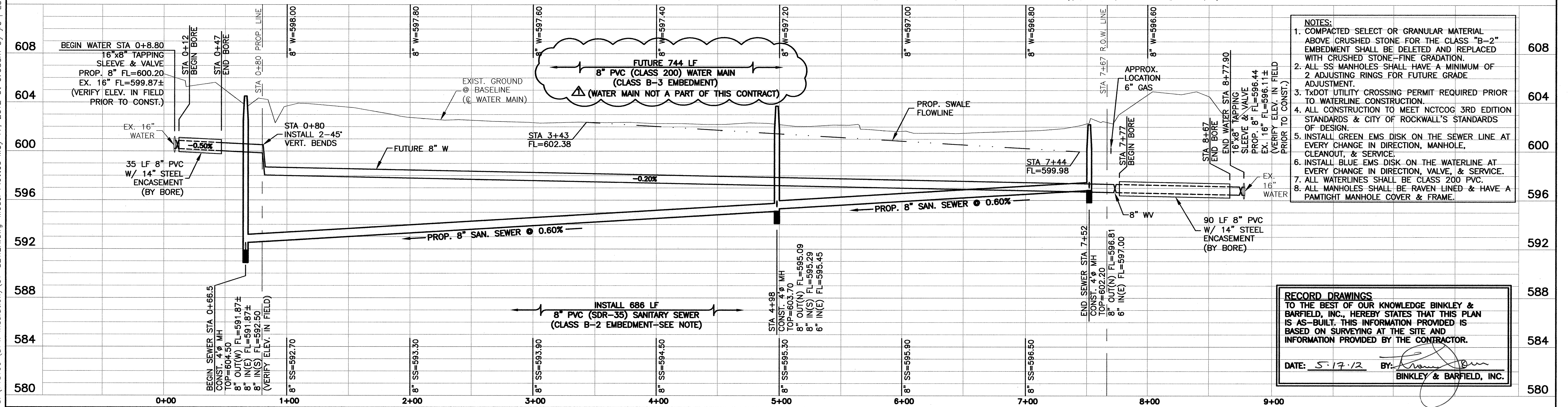


SECTION DETAIL
* SWALE BEGINS AT STA 3+43.
(GRASS TO BE ESTABLISHED 1\"/>

** GAS LINE FROM STA 6+00 TO 7+70±.



0 20 40 80
SCALE: 1" = 40'
BENCH MARK: STANDARD CITY OF ROCKWALL MONUMENT
STATION NO. R019 IS A BRASS DISC SET AT THE NORTHWEST
CORNER OF SILVER VIEW AND DIAMOND WAY. POSTED
ELEVATION = 600.69



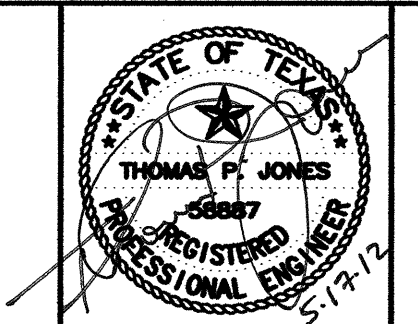
- NOTES:**
1. COMPACTED SELECT OR GRANULAR MATERIAL ABOVE CRUSHED STONE FOR THE CLASS "B-2" EMBEDMENT SHALL BE DELETED AND REPLACED WITH CRUSHED STONE-FINE GRADATION.
 2. ALL SS MANHOLES SHALL HAVE A MINIMUM OF 2 ADJUSTING RINGS FOR FUTURE GRADE ADJUSTMENT.
 3. TxDOT UTILITY CROSSING PERMIT REQUIRED PRIOR TO WATERLINE CONSTRUCTION.
 4. ALL CONSTRUCTION TO MEET NCTCOG 3RD EDITION STANDARDS & CITY OF ROCKWALL'S STANDARDS OF DESIGN.
 5. INSTALL GREEN EMS DISK ON THE SEWER LINE AT EVERY CHANGE IN DIRECTION, MANHOLE, CLEANOUT, & SERVICE.
 6. INSTALL BLUE EMS DISK ON THE WATERLINE AT EVERY CHANGE IN DIRECTION, VALVE, & SERVICE.
 7. ALL WATERLINES SHALL BE CLASS 200 PVC.
 8. ALL MANHOLES SHALL BE RAVEN LINED & HAVE A PAMTIGHT MANHOLE COVER & FRAME.

RECORD DRAWINGS
TO THE BEST OF OUR KNOWLEDGE BINKLEY & BARFIELD, INC., HEREBY STATES THAT THIS PLAN IS AS-BUILT. THIS INFORMATION PROVIDED IS BASED ON SURVEYING AT THE SITE AND INFORMATION PROVIDED BY THE CONTRACTOR.
DATE: 5.17.12 BY: [Signature]
BINKLEY & BARFIELD, INC.

1/9/12	WATER MAIN NOT A PART OF THIS CONTRACT	TPJ
3/26/12	RECORD DRAWING REVIEW	TPJ
4/23/12	AS-BUILT SURVEY DATA	TPJ

Designed By: TPJ
Drawn By: JRS
Checked By: TPJ
Approved By: _____

Job No.: 148100
Date: 10/12/11
Scale: 1"=40'H(22"x34")
1"=4'V(22"x34")



Binkley & Barfield
consulting engineers
1255 W. 15th Street, Suite 250 Plano, Texas 75075 www.binkleybarfield.com
Firm Registration #237

DFW INSULATION
2578 HWY 276
ROCKWALL, TEXAS

SITE IMPROVEMENTS
UTILITY PLAN & PROFILE

Sheet No:
C1
of _____