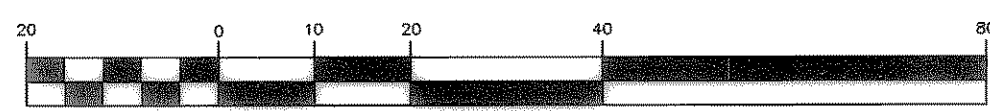


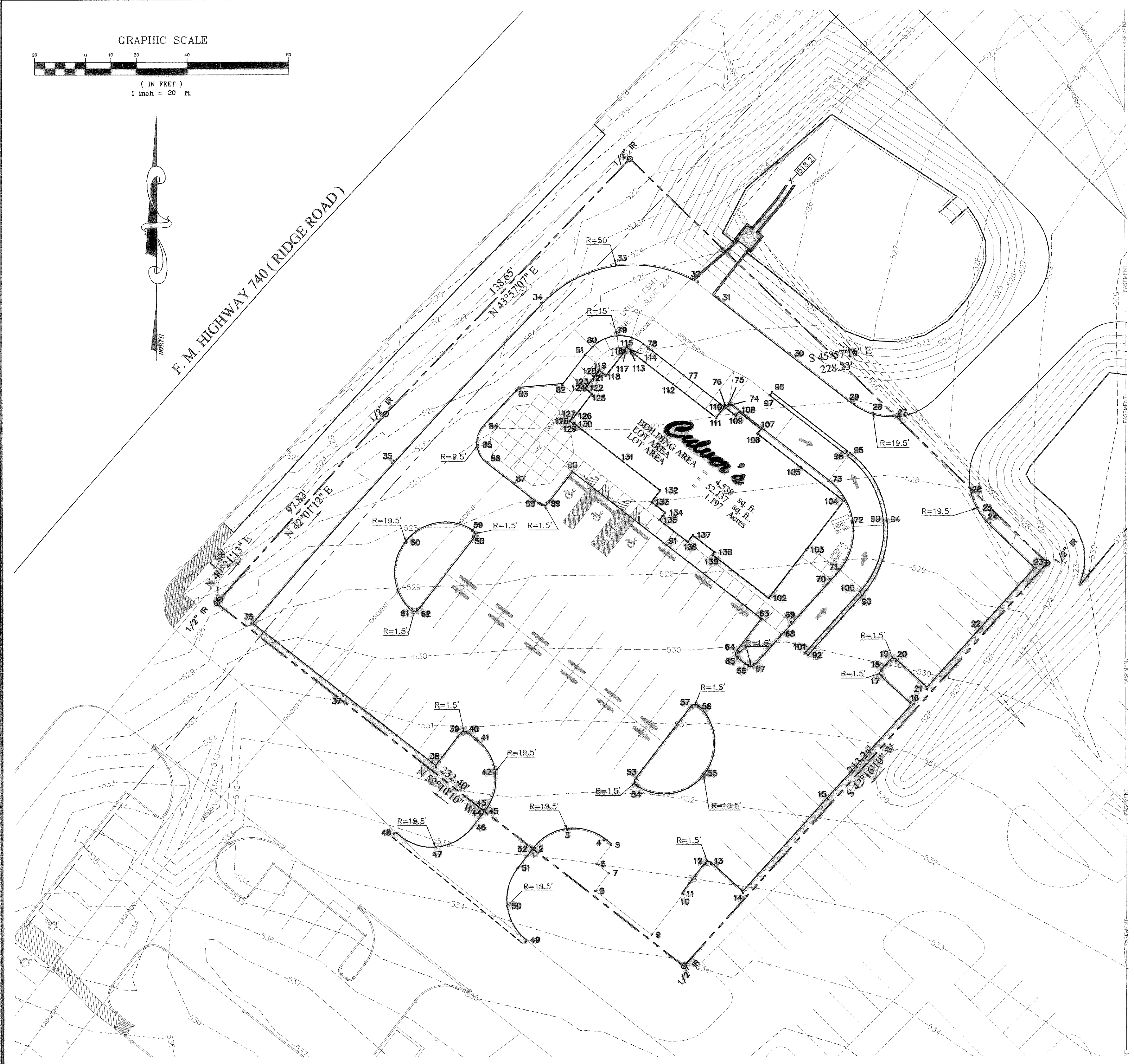
GRAPHIC SCALE



(IN FEET)
1 inch = 20 ft.



F. M. HIGHWAY 740 (RIDGE ROAD)



COORDINATE PLAN

SCALE: 1" = 20'

1 GENERAL REVISIONS

Number	Northing	Easting
1	-69.25	-217.77
2	-68.86	-217.46
3	-61.47	-204.49
4	-65.42	-190.1
5	-67.54	-187.37
6	-74.91	-193.09
7	-78.69	-188.22
8	-85.54	-193.54
9	-102.71	-171.42
10	-86.92	-159.15
11	-86.81	-159.28
12	-75.19	-150.25
13	-75	-148.06
14	-86.44	-135.47
15	-49.44	-101.84
16	-12.44	-68.21
17	-1.34	-80.42
18	0.78	-80.52
19	4.48	-77.15
20	4.58	-75.04
21	-6.52	-62.83
22	17.15	-41.31
23	40.83	-19.79
24	58.49	-38.05
25	64.45	-42.57
26	71.49	-45.08
27	100.63	-75.21
28	101.68	-83.93
29	105.73	-91.71
30	124.99	-116.52
31	146.94	-144.8
32	153.14	-152.64
33	159.8	-184.91
34	144.94	-214.31
35	83.1	-272.52
36	19.53	-328.84
37	-8.68	-392.51
38	-36.89	-256.18
39	-23.85	-246.07
40	-23.59	-243.97
41	-26.16	-240.66
42	-39.13	-233.27
43	-53.52	-237.21
44	-53.92	-237.52
45	-54.22	-237.12
46	-60.56	-242.04
47	-68.25	-256.45
48	-62.64	-271.78
49	-104.69	-220.82
50	-91.41	-228.27

Number	Northing	Easting
51	-76.73	-224.21
52	-68.95	-218.16
53	-41.71	-177.3
54	-43.9	-176.92
55	-39.45	-150.99
56	-13.22	-153.1
57	-13.39	-155.31
58	53.46	-241.4
59	55.64	-241.77
60	51.19	-267.71
61	24.96	-265.6
62	25.14	-263.39
63	20.91	-127.57
64	8.27	-137.39
65	6.17	-137.12
66	3.1	-133.17
67	3.28	-131.14
68	15.23	-120.26
69	19.88	-116.21
70	36.62	-100.8
71	40.36	-97.47
72	58.55	-92.27
73	75.03	-101.58
74	104.75	-139.9
75	104.63	-140.89
76	103.6	-141.89
77	116.42	-158.21
78	128.93	-174.33
79	132.04	-184.57
80	127.53	-194.28
81	124.57	-197.11
82	112.77	-206.27
83	111.4	-222.94
84	96.7	-236.8
85	89.46	-239.33
86	82.71	-235.69
87	74.49	-225.11
88	66.27	-214.53
89	66.54	-212.42
90	79.17	-202.61
91	50.04	-165.09
92	6.84	-109.65
93	30.47	-88.15
94	59.32	-78.4
95	86.06	-92.97
96	109.79	-123.56
97	108.6	-124.47
98	84.88	-93.89
99	59.19	-79.89
100	31.47	-89.26

Number	Northing	Easting
101	7.85	-110.76
102	29.09	-125.03
103	48.19	-110.21
104	67.28	-95.4
105	80.46	-112.39
106	93.64	-129.38
107	95.48	-127.95
108	102.23	-136.64
109	100.64	-137.87
110	104.12	-142.34
111	99.9	-145.61
112	113.08	-162.6
113	126.26	-179.59
114	126.52	-179.39
115	127.54	-180.7
116	126.23	-181.72
117	126.02	-181.46
118	116.41	-188.92
119	118.5	-191.62
120	117.71	-192.23
121	117.86	-192.16
122	112.13	-196.45
123	112.18	-196.52
124	111.39	-197.13
125	109.3	-194.43
126	99.68	-201.89
127	99.89	-202.15
128	98.57	-203.18
129	97.55	-201.86
130	97.81	-201.65
131	84.64	-184.67
132	71.46	-167.68
133	66.98	-171.15
134	62.79	-165.75
135	59.9	-168
136	51.31	-156.94
137	53.95	-154.89
138	47.31	-146.33
139	46.26	-147.15

RECORD DRAWINGS
 THESE RECORD DRAWINGS HAVE BEEN PREPARED BASED ON INFORMATION PROVIDED BY OTHERS. THE ENGINEER HAS NOT VERIFIED THE ACCURACY OF THIS INFORMATION AND SHALL NOT BE RESPONSIBLE FOR ANY ERRORS OR OMISSIONS WHICH MAY BE INCORPORATED HEREIN AS A RESULT OF WHICH MAY BE ASSOCIATED WITH THE INFORMATION PROVIDED.
 JOHN E. HAWKINS & ASSOCIATES, INC.
 By: _____ Date: 9/10/02



REVISION	DATE	DESCRIPTION	BY
1	10/10/02	GENERAL REVISIONS	JTB

SHEET NO. **C21**

JOHN E. HAWKINS & ASSOCIATES, INC.
 CONSULTING ENGINEERS SINCE 1957
 103 E. VIRGINIA ST. SUITE 206
 MCKINNEY, TEXAS 75069, 972-548-2678

**JAMES LITTLEPAGE
 CULVER'S RESTAURANT
 COORDINATE PLAN**

Scale: 1"=20' Date: AUG '02 Job No. 776.2
 Dsn. By: JTB Dwn. By: AEP Ckd. By: JTB