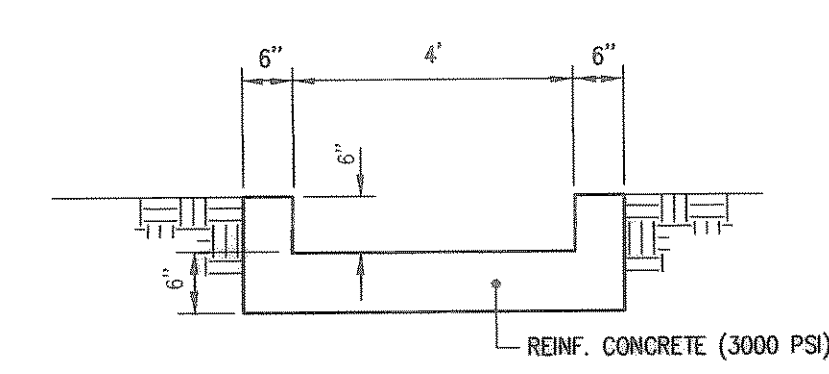
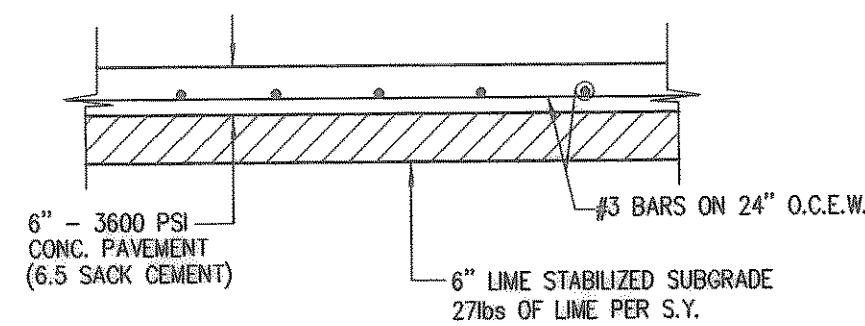
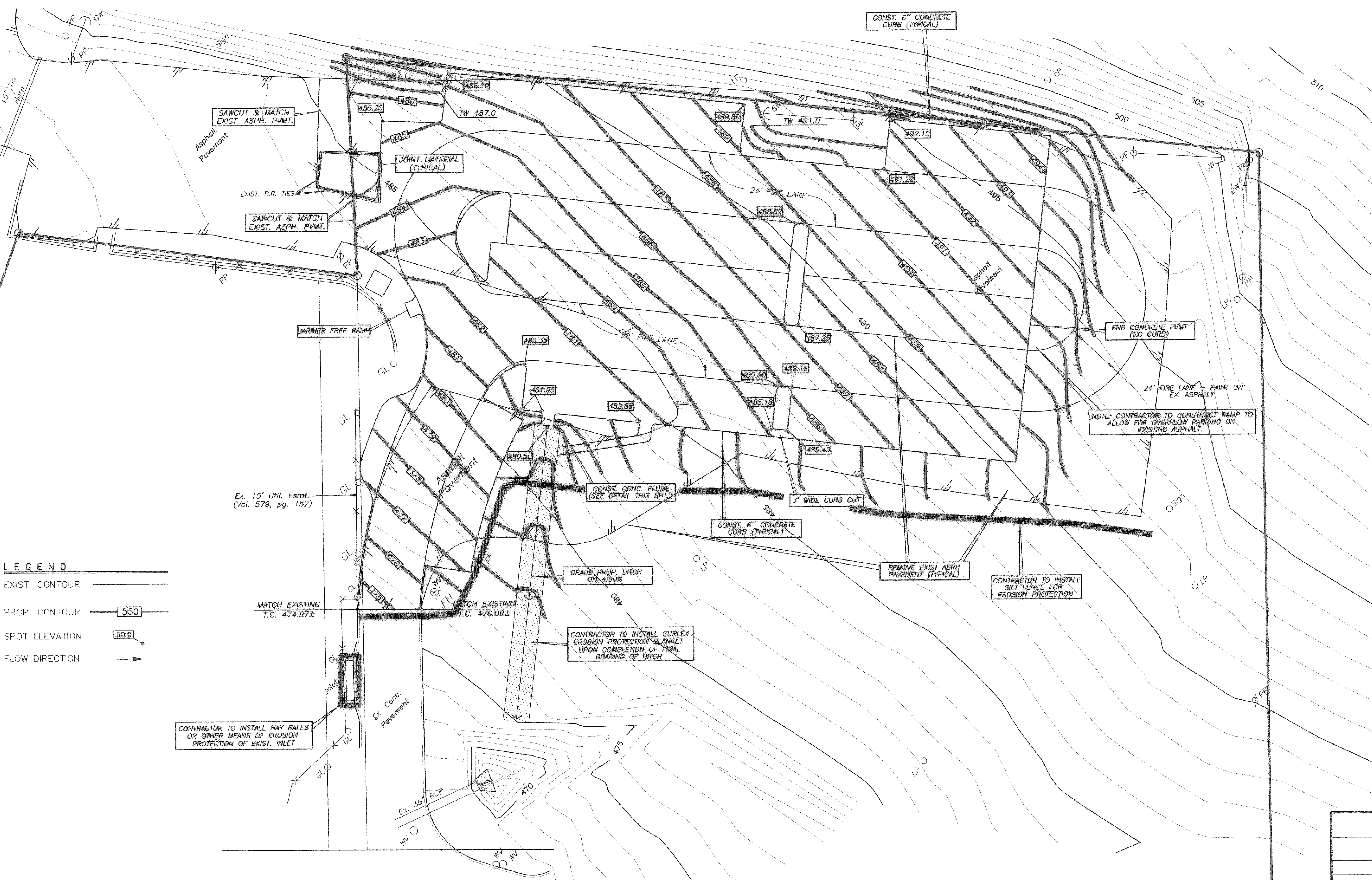


- NOTES:
1. ALL SPOT ELEVATIONS ARE TOP OF FINISH PAVEMENT.
 2. CONTRACTOR TO REMOVE ALL EXCESS SPOIL MATERIAL AND ASPHALT FROM SITE.
 3. CONCRETE TO BE 6" W/#3 @ 24" O.C.E.W.
 4. SUB-GRADE TO BE 6" LIME STABILIZED. BASED ON 27 LBS./S.Y. OF LIME.



INTERSTATE HIGHWAY NO. 30
(Service Road)



- LEGEND
- EXIST. CONTOUR
 - PROP. CONTOUR
 - SPOT ELEVATION
 - FLOW DIRECTION

CONTRACTOR TO INSTALL HAY BALES OR OTHER MEANS OF EROSION PROTECTION OF EXIST. INLET

CONTRACTOR TO INSTALL CURLEX EROSION PROTECTION BLANKET UPON COMPLETION OF FINAL GRADING OF DITCH

CONTRACTOR TO INSTALL SILT FENCE FOR EROSION PROTECTION

NOTE: CONTRACTOR TO CONSTRUCT RAMP TO ALLOW FOR OVERFLOW PARKING ON EXISTING ASPHALT.

THE SEAL APPEARING ON THIS DOCUMENT WAS AUTHORIZED BY CHRISTOPHER R. CUNY, P.E. 65642



GRADING PLAN				
CULPEPPER SITE				
PARKING LOT IMPROVEMENTS				
CONSTRUCTION RECORD DRAWINGS				
F.C. CUNY CORPORATION				
4222 Rosehill Rd, Suite 7 • Garland, Texas 75043 • (972) 240-7700				
Drawn By:	Checked By:	Date:	Scale:	Project No.:
DM	C.C.	7/17/02	1"=20'	
				Sheet No.:
				3 of 3