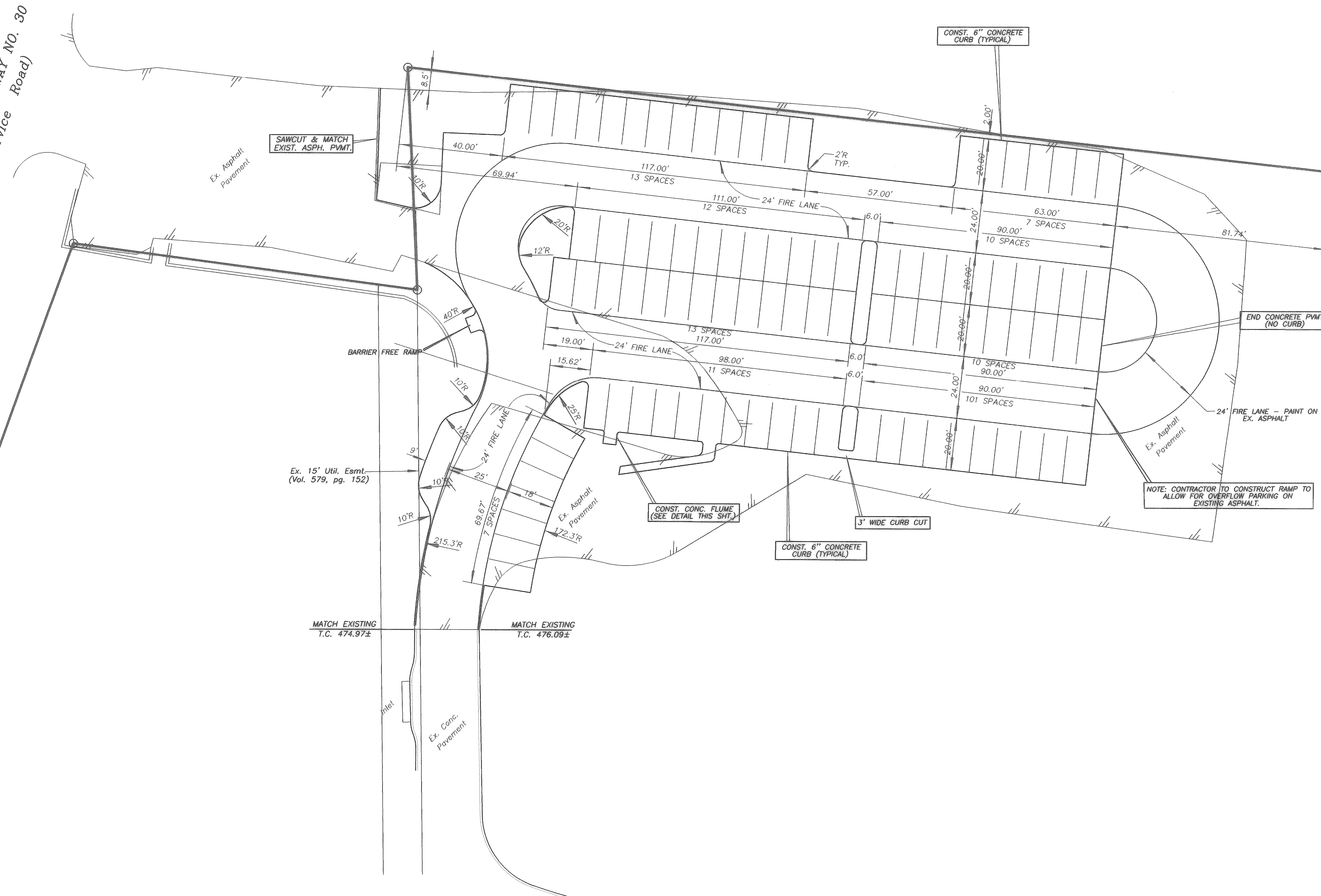
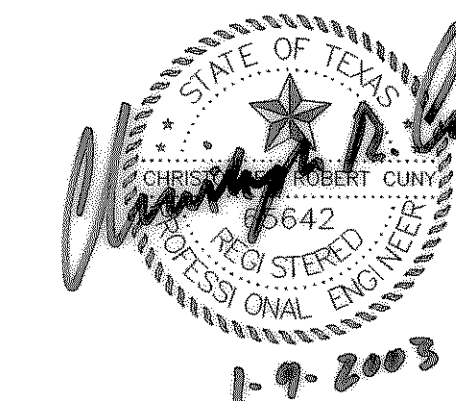


INTERSTATE HIGHWAY NO. 30  
(Service Road)



THE SEAL APPEARING ON THIS DOCUMENT WAS AUTHORIZED BY CHRISTOPHER R. CUNY, P.E. 65642



DIMENSION CONTROL PLAN					
CULPEPPER'S					
PARKING LOT IMPROVEMENTS					
CONSTRUCTION RECORD DRAWINGS					
<b>F.C. CUNY CORPORATION</b>					
4222 Rosehill Rd, Suite 7 • Garland, Texas 75043 • (972) 240-7700					
Drawn By:	Checked By:	Date:	Scale:	Project No.:	Sheet No.:
DM	C.C.	7/17/02	1"=20'		2 of 3

C:\Documents and Settings\USER\DeskTop\Projects\Culpeppers\cul-dim.dwg Fri Jan 03 10:14:29 2003